



ROADSTER High Windshield Dropping on Bumpy Road (ST_000064634_TST61Y014S09_en

[Printable Version](#)

Rate This Article	(Average Rating: No Rating)	Version 2	Rate This Article	(Average Rating: No Rating)	Version 2	Language	English	Show Properties	Language	English	Show Properties
-------------------	-----------------------------	---------------------------	-------------------	-----------------------------	---------------------------	----------	-------------------------	---------------------------------	----------	-------------------------	---------------------------------

Summary:

Some customers have reported that with the installation of the high windshield for PAC that in some certain driving conditions the windshield drops.

Type:

General

TST Detail:

The solution consists in the installation of [219800352 - High Windshield Refurbish Kit](#) [springs to increase the pre-load on the balls and slide rail](#).

You will notice the windshield adjustment is much stiffer. Show the customer how to properly adjust the height of the windshield using both hands and pulling/pushing evenly.

Attachment:

First Published By: Dany Davey on 2013-10-30

Last Modified By: Dany Davey on 2014-09-05



ROADSTER KIT - High Windshield Refurbish Kit 219800352_000096028_INS61Y014S88_en

[Printable Version](#)

Rate This Article	(Average Rating: No Rating)	Version 1	Rate This Article	(Average Rating: No Rating)	Version 1	Language English	Show Properties	Language English	Show Properties
-------------------	-----------------------------	-----------	-------------------	-----------------------------	-----------	-------------------------------	---------------------------------	-------------------------------	---------------------------------

Product: **Roadster**
 Project no: **rsi2014-030**
 Instruction Sheet P/N: **219800353**
 Revision no:
 Revision date:
 Item covered: **High Windshield Refurbish Kit (Kit P/N : 219800352)**

PRIOR TO INSTALLATION, PLEASE VERIFY IF A REVISED VERSION OF THIS INSTRUCTION SHEET IS AVAILABLE ON KNOWLEDGE CENTER.

The following symbols may be used in this document:

⚠ WARNING
Indicates a hazardous situation which, if not avoided, could result in death or serious injury.

CAUTION: Indicates an instruction which, if not followed, could severely damage vehicle components or other property.

NOTICE	Indicates an instruction which, if not followed, could severely damage vehicle components or other property.
---------------	--

⚠ WARNING
<ul style="list-style-type: none"> - This kit is designed for specific applicable models only (authorized BRP dealers will confirm model(s)). It is not recommended for units other than the one (those) for which it was sold. - This instruction sheet MUST be given to the purchaser. - Should removal of a locking device (e.g. lock tabs, self-locking fasteners, etc.) be required when undergoing disassembly/assembly, always replace with a new one. - Torque wrench tightening specifications must strictly be adhered to.

NOTE: The illustrations in this document show typical construction of the different assemblies and may not reproduce the full detail or exact shape of the parts; however, they represent parts that have the same or similar function.

Installation time is approximately 0.4 hour.

ICON LEGEND

Icon	indicates
	Parts to be discarded



Parts kept for reinstallation

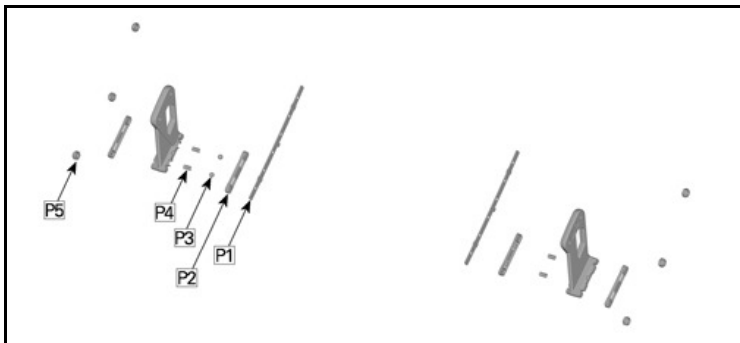


PULLEY FLANGE CLEANER (P/N 413 711 809)



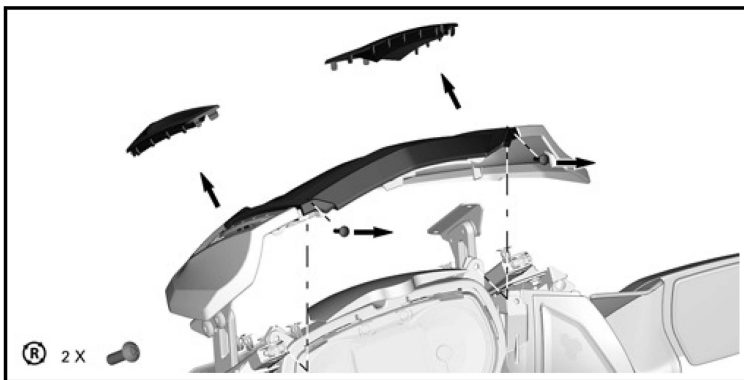
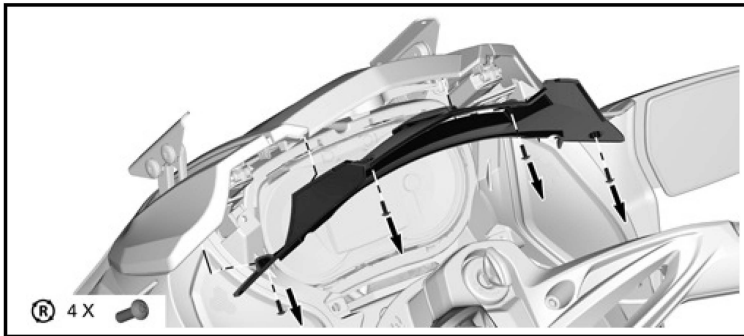
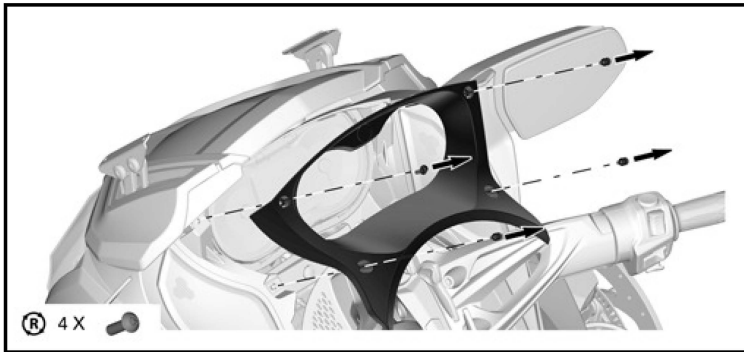
XPS SYNTHETIC GREASE (P/N 293 550 010)

ITEMS IN KIT



Item	Description	Part Number	Quantity
P1	Position plate	705 005 459	2
P2	Slider	705 005 275	4
P3	Ball	705 001 705	4
P4	Standard Spring for factory windshield	705 005 277	4
	Yellow spring for use with PAC high windshield (P/N 219 400 354)	705 009 458	4
P5	M6 elastic nut	232 561 414	6

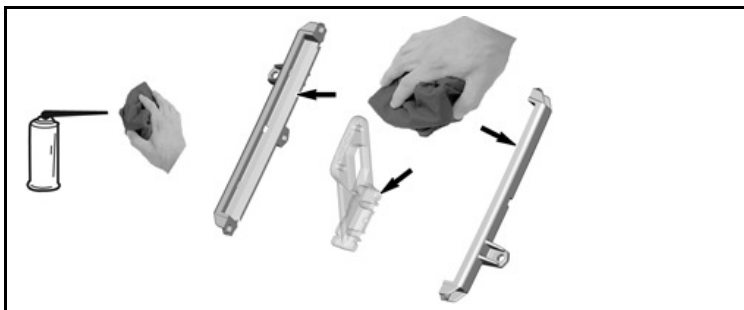
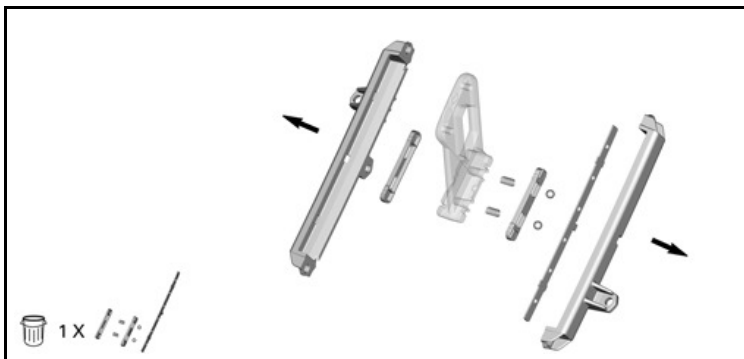
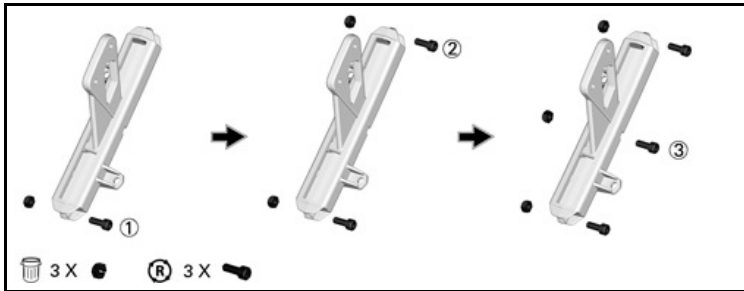
INSTRUCTIONS

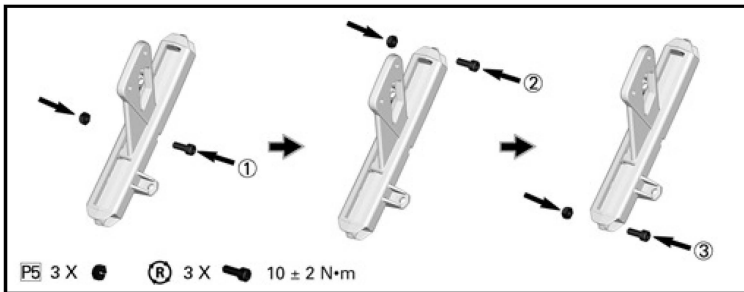
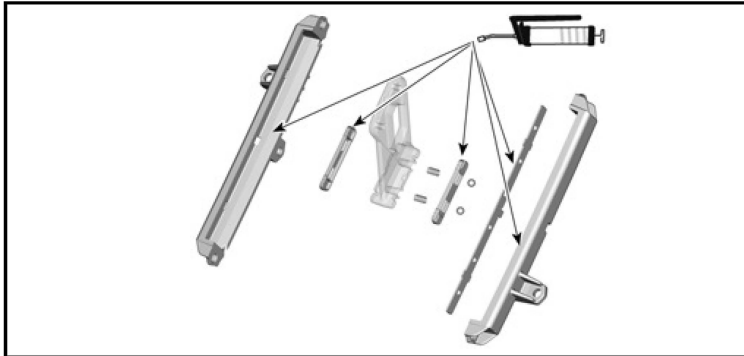
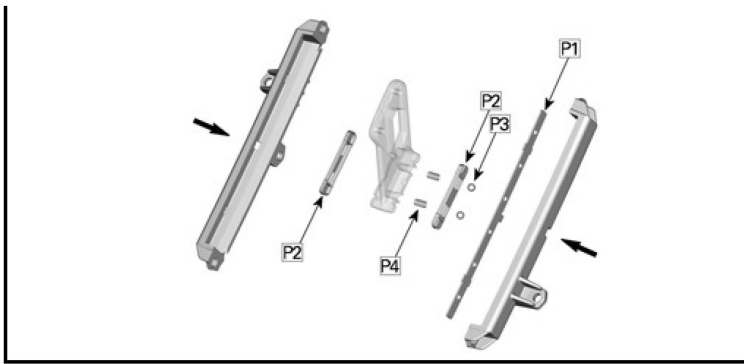




Right hand side shown

NOTE: Hold together when removing final screw [3].





Repeat procedure on left hand side.

