



Technical Service Bulletin

SUBJECT:		No: TSB-16-00-006	
2017 i-MiEV SERVICE MANUAL INFORMATION – SERVICE MANUAL REVISION		DATE: May, 2016	
		MODEL: 2017 i-MiEV	
CIRCULATE TO:	<input type="checkbox"/> GENERAL MANAGER	<input checked="" type="checkbox"/> PARTS MANAGER	<input checked="" type="checkbox"/> TECHNICIAN
<input checked="" type="checkbox"/> SERVICE ADVISOR	<input checked="" type="checkbox"/> SERVICE MANAGER	<input checked="" type="checkbox"/> WARRANTY PROCESSOR	<input type="checkbox"/> SALES MANAGER

PURPOSE

A 2017 i-MiEV Service Manual will not be issued. Use the 2016 Service Manual along with this TSB for complete maintenance, repair, and general vehicle information for the 2017 i-MiEV.

AFFECTED VEHICLES

2017 i-MiEV

AFFECTED SERVICE MANUALS

2017 i-MiEV Service Manual:

- Group 00 – General
 - Vehicle Identification
 - General Data and Specifications



GROUP 00

GENERAL

CONTENTS

VEHICLE IDENTIFICATION	00-2	GENERAL DATA AND SPECIFICATIONS	
VEHICLE IDENTIFICATION NUMBER (VIN) PLATE		00-3
.....	00-2		

00-2

GENERAL
VEHICLE IDENTIFICATION

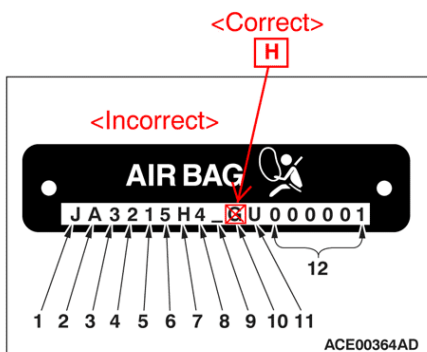
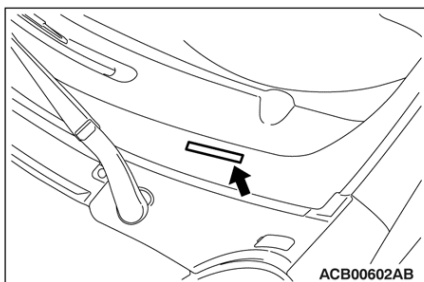
VEHICLE IDENTIFICATION

VEHICLE IDENTIFICATION NUMBER PLATE

M1001005503297

VEHICLES IDENTIFICATION NUMBER LOCATION

The vehicle identification number (VIN) plate is located on a plate attached to the left top side of the instrument panel.



CODE CHART

No.	Item	Content
1	Country	J Japan
2	Make	A Mitsubishi motors corporation
3	Vehicle type	3 Passenger car
4	Others	2 Driver, passenger and side curtain air bags
5	Line	1 i-MiEV
6	Price class	5 PREMIUM
7	Body	H 5 door-hatch back
8	Electrical motor	4 49 kW (Y51)
9	Check digits*	0, 1, 2, 3, -----9, X
10	Model year	G 2017 year <Incorrect>
11	Plant	U Mizushima
12	Serial number	000001 to 999999

<Correct>

H

NOTE: *: Check digit means a single number, or letter X, used to verify the accuracy of transcription of vehicle identification number.

VEHICLE IDENTIFICATION NUMBER LIST

VEHICLES FOR USA

VIN (Except sequence number)	Brand	Electric power	Model code
JA3215H4 G U <Incorrect>	MITSUBISHI i-MiEV	49 kW	HA4WGLDDL2M

VEHICLES FOR CANADA

VIN (Except sequence number)	Brand	Electric power	Model code
JA3215H4 G U <Incorrect>	MITSUBISHI i-MiEV	49 kW	HA4WGLDDL3M

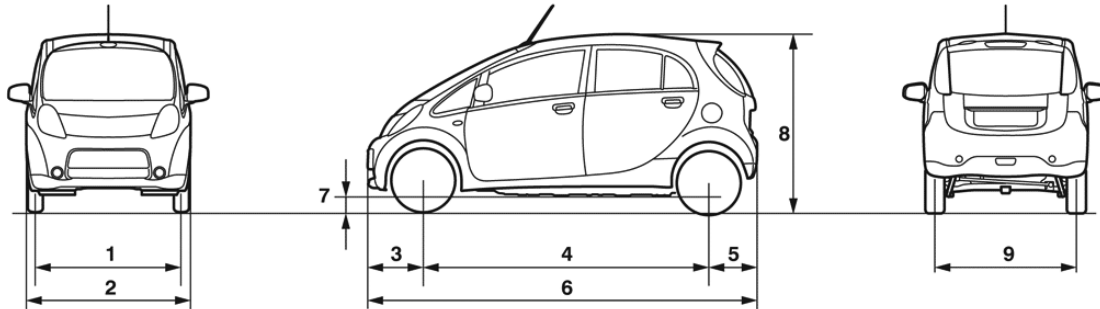
H
<Correct>

GENERAL
GENERAL DATA AND SPECIFICATIONS

00-3

GENERAL DATA AND SPECIFICATIONS

M1001000909748



ACB00725AF

Item			HA4WGLDDL2M	HA4WGLDDL3M
Vehicle dimension mm (in)	Tread-front	1	1,420 (55.9)	1,420 (55.9)
	Overall width	2	1,585 (62.4)	1,585 (62.4)
	Overhang-front	3	570 (22.4)	570 (22.4)
	Wheelbase	4	2,550 (100.4)	2,550 (100.4)
	Overhang-rear	5	555 (21.8)	555 (21.8)
	Overall length	6	3,675 (144.7)	3,675 (144.7)
	Ground clearance	7	155 (6.1)	155 (6.1)
	Overall height (unladen)	8	1,615 (63.6)	1,615 (63.6)
	Tread-rear	9	1,380 (54.3)	1,380 (54.3)
Vehicle weight kg (lb)	Curb weight	Without full optional parts	1,148 (2,530)	1,148 (2,530)
		With full optional parts	1,151 (2,537)	1,155 (2,546)
	Gross vehicle weight rating		1,510 (3,329)	1,510 (3,329)
	Gross axle weight rating-front		675 (1,488)	675 (1,488)
	Gross axle weight rating-rear		890 (1,962)	890 (1,962)
Seating capacity		4	4	
Traction battery	Type		Lithium ion battery	Lithium ion battery
	Total voltage V		330	330
	Total electric energy kWh		16	16
Electric motor	Model No.		Y51	Y51
	Type		Permanent magnet synchronous motor	Permanent magnet synchronous motor
	Rated output kW		35	35
	Max. output kW/rpm		49/4,000 – 8,800	49/4,000 – 8,800
	Max. torque N-m/rpm		196/0 – 300	196/0 – 300
Transmission	Model code		F1E1A	F1E1A
	Type		Without shifting function	Without shifting function
Turning radius m (ft)			4.7 (15.41)	4.7 (15.41)

= changed for 2017 MY