

# MULTI-MODEL

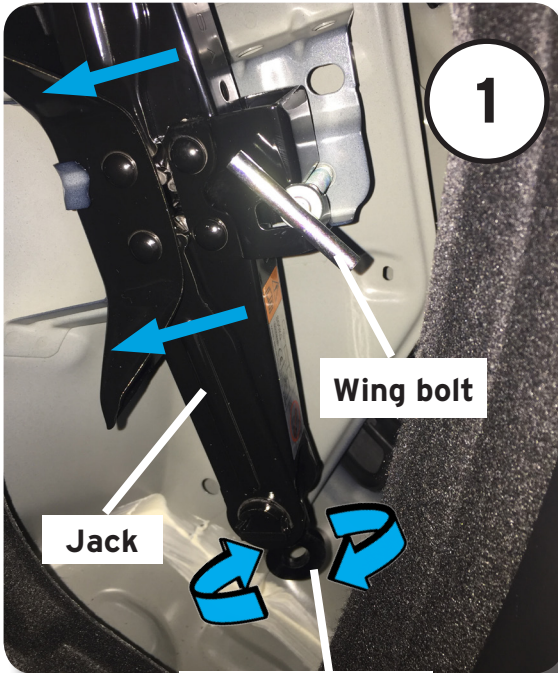
## *RATTLE NOISE FROM REAR OF VEHICLE WHILE DRIVING*

Some customers may complain about a rattle type noise coming from the rear of the vehicle when driving on rough roads. This may be caused by a loose spare tire jack.

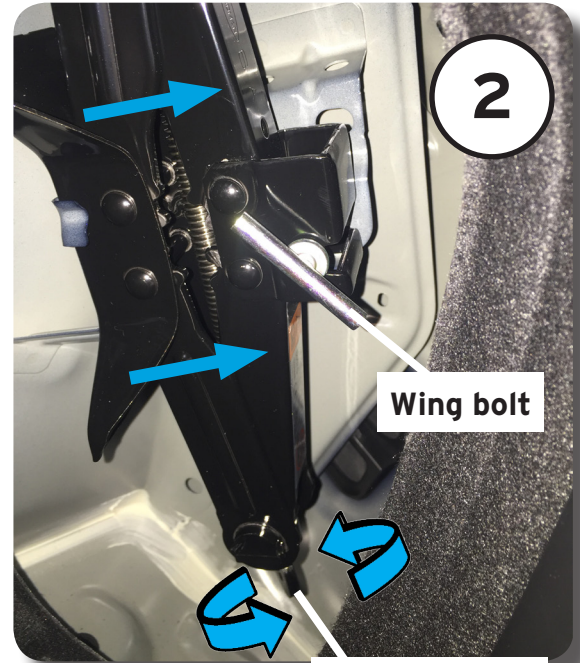
If the jack is not secured properly, a rattle type noise may occur while driving.

### Secure the Jack

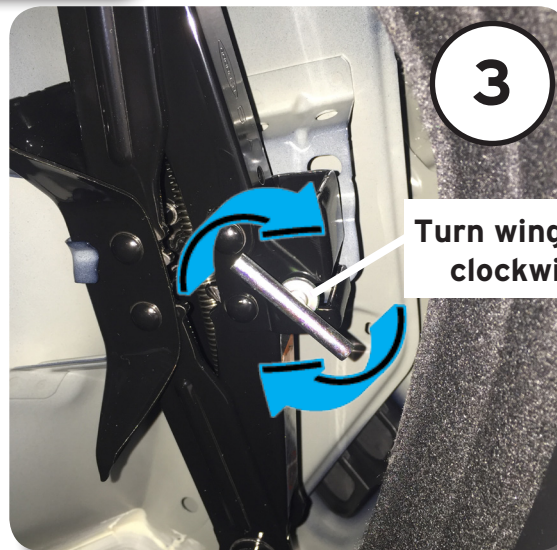
1. Turn the jack screw fully counter clockwise. Install the jack and wing bolt. (do not tighten wing bolt).
2. Turn the jack screw clockwise until the jack is stopped by the wing bolt.
3. Tighten the wing bolt.



Turn jack screw counter clockwise



Turn jack screw clockwise



Turn wing bolt clockwise

**Special thanks to technician Christopher Shankle from Keffer Mazda** in Huntersville , North Carolina. Christopher has been rewarded \$50 value in Reward Performance by Mazda (RPM) points for submitting this valuable technical information.

An editorial board comprised of MNAO service staff members generates, collects, and verifies information for this publication. © 2016 Mazda Motor of America, Inc.

To contribute repair tip ideas, send an e-mail to [mtips@mazdausa.com](mailto:mtips@mazdausa.com) or fax to (949) 442-6599. If we select your repair tip, you will receive \$50 value in Reward Performance by Mazda (RPM) points for your efforts. All contributions become property of MNAO, which assumes permission to publish them without further consideration