



Service Bulletin

PRELIMINARY INFORMATION

Subject: Water Intrusion - Forward Lamp Harness - Engine Cooling Fan Inoperative - DTC P0480

Models: 2016 Chevrolet Camaro
Equipped with 3.6L engine (RPO LGX) and without RPO Y4Q

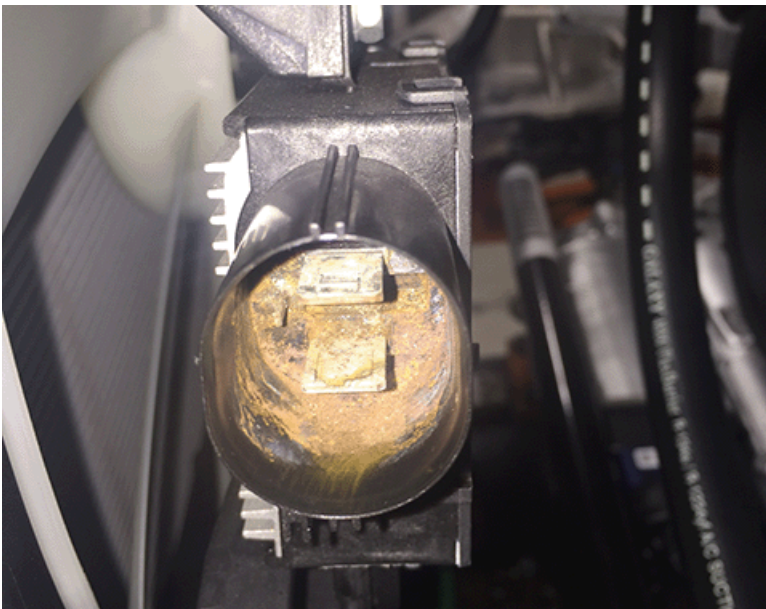
This PI was superseded to update Administrative Details. Please discard PIC6160.

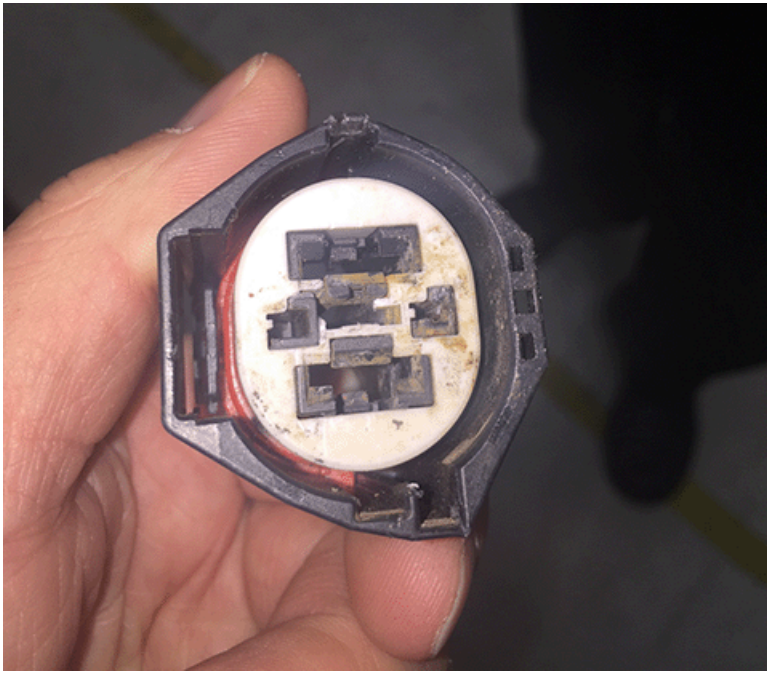
Condition/Concern

Some customers may comment that the engine cooling fan intermittently stops working. As this condition worsens, it may be found that the Check Engine Lamp (CEL) has turned on, the engine cooling fan stops operating all together and/or DTC P0480 may be set. If the customer would continue driving with an inoperative cooling fan, the engine can overheat causing severe engine component damage.

Recommendation/Instructions

This concern may be caused by water intrusion into the forward lamp harness. If the wiring harness is stretched, or side loaded, where the cooling fan module connector plugs in, this may allow water to wick down the harness, past the weather pack seals, and into the connector itself. As time goes on, this water may corrode the terminals inside the connector and/or the harness itself as seen in the two photos below.





As the corrosion builds, this may cause the engine cooling fan to become inoperative altogether. If this concern is encountered, dealership technicians are to first inspect the forward lamp wiring harness to cooling fan module connector for the presence of moisture and/or corrosion. If water and/or corrosion is found, contact the Technical Assistance Center (TAC) for specific repair instructions. If no water and/or corrosion is found after inspecting this connection, refer to Service Information (SI) and continue with regular diagnosis.

GM bulletins are intended for use by professional technicians, NOT a "do-it-yourselfer". They are written to inform these technicians of conditions that may occur on some vehicles, or to provide information that could assist in the proper service of a vehicle. Properly trained technicians have the equipment, tools, safety instructions, and know-how to do a job properly and safely. If a condition is described, DO NOT assume that the bulletin applies to your vehicle, or that your vehicle will have that condition. See your GM dealer for information on whether your vehicle may benefit from the information.



WE SUPPORT VOLUNTARY TECHNICIAN CERTIFICATION