



# Tech Tips

TT 40-16-02

Date: September 16, 2016

## 2017 Golf, Golf Sportwagen, GTI – Sub frame Center Bushing Area Visual Concern

If there are any visual concerns for the sub-frame at the center bushing (see photos), no action is needed as this is a normal condition. The sub-frame should not be replaced for this condition.

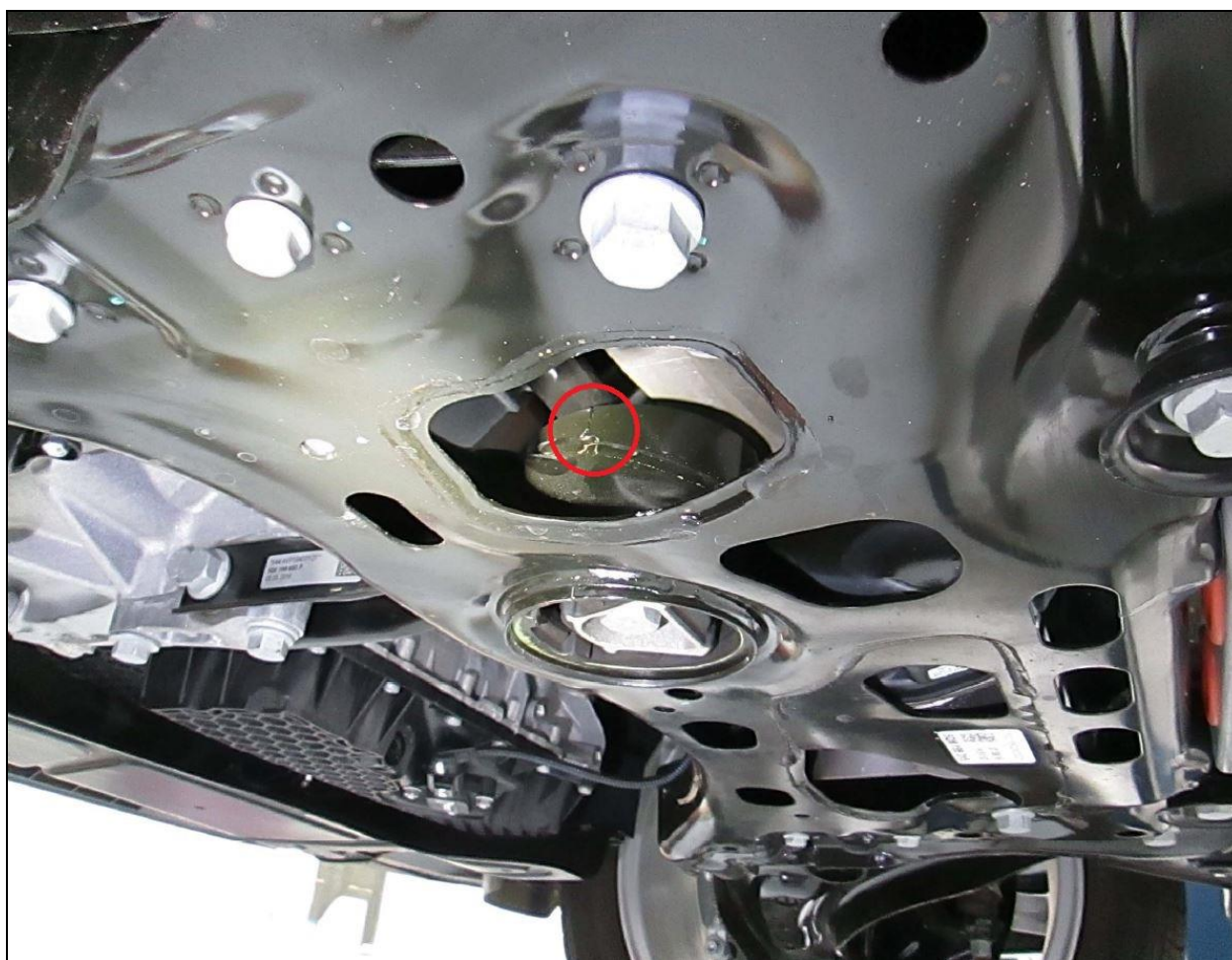


Figure 1



# Service Information

---



Figure 2