



**IMPORTANT SERVICE
INFORMATION FOR:**

- ✓ SERVICE MANAGER
- ✓ SERVICE ADVISOR
- ✓ TECHNICIAN
- ✓ PARTS DEPARTMENT
- ✓ WARRANTY PERSONNEL

BULLETIN NUMBER:
IB08-X-002F

ISSUE DATE:
APRIL 2017

GROUP:
MISCELLANEOUS

CERTIFIED CLEAN IDLE LABEL INTRODUCTION AND REPLACEMENT PROCEDURES

AFFECTED VEHICLES

- 2009-2018MY Isuzu N-Series
- 2009-2010MY GMC/ Chevrolet W-Series Medium Duty Vehicles Equipped with 5.2L 4HK1-TC Diesel Engine with GVW Greater Than 14,000 Pounds

This bulletin supersedes information bulletin IB08-X-002E. This bulletin is being revised to update the Model Years. Please discard previous bulletin IB08-X-002E.

INFORMATION

Isuzu diesel engines available in the above affected vehicles meet the California Air Resource Board's (CARB) optional idling emissions standard of 30 grams per hour of oxides of nitrogen (NOx) with no increase in the emission of other regulated pollutants. As a result these vehicles have been approved as "Certified Clean Idle" and are "exempt" from the Engine Shutdown System (ESS) requirement pursuant to Section 1956.8 of Title 13, California Code of Regulations. As required by the ESS regulation, for "Certified Clean Idle" vehicles, Isuzu has introduced a tamper resistance "Certified Clean Idle" label located on the driver's side door panel.

It is important that this label remain, permanently, on the vehicle to identify it as "Certified Clean Idle". CARB requires this label as evidence that, at the time of manufacture, the engine installed met the applicable emission standards. Should the label be found missing or damaged during an inspection, a citation and penalties may be issued. If the vehicle is operated in California with a damaged or missing clean idle label, Isuzu recommends vehicle operators follow the 5 minute ESS requirement by manually turning off the engine. Following this ESS requirement will keep the vehicle operation compliant until a replacement label can be installed.

"Clean Air Idle" labels are printed with a serial number and registered to an individual VIN. As a result, a replacement label will also include a new serial number which must be registered to the vehicle's VIN by the manufacturer. The below information is provided to assist in acquiring, replacing and registering a replacement label.

PARTS INFORMATION

Replacement Certified Clean Idle labels may only be acquired directly from Isuzu Commercial Truck of America (ICTA) vehicle distribution. Contact vehicle distribution at 1-877-478-9828, Prompt 2, then 4.

SERVICE INFORMATION

Important: Authorized dealers shall not allow vehicle owners to affix replacement labels – failure to comply with this may result in legal action.

Take the following steps to request the label and complete the replacement procedure.

1. Complete the order form provided in the bulletin and fax it directly to ICTA vehicle distribution at: 714-938-0603. The order form must be filled out completely. Incomplete forms will result in delay of approval for label replacement. The vehicle/engine information necessary to complete the order form is available on the vehicle in the following locations:
 - VIN – VIN plate in driver side door jamb
 - Mileage - odometer
 - Family Name - valve cover engine emission label
 - Engine S/N – engine block passenger side
2. Once replacement is approved distribution will mail a replacement label, VIN assignment printout and proof of installation letter directly to the requesting dealer.
3. Affix the label per the label installation instructions below. If a vehicle cannot return for installation, return the label to ICTA vehicle distribution.

Important: “Clean Air Idle” labels are VIN specific. Do not affix label to any VIN other than what is indicated by the assignment print out.

4. Complete, sign and return the proof of installation letter. This will complete the registration of the label.

CLEAN AIR IDLE LABEL ORDER FORM CA. STATE CERTIFIED

IMPORTANT – PLEASE READ FIRST

Make a copy of this form; complete all information and fax or mail to:

ISUZU COMMERCIAL TRUCK AMERICA, INC.

1400 S. Douglass Road, Suite 100

Anaheim, CA. 92806-6906

Attn: Commercial Vehicle Distribution

Fax Number: (714) 938-0603



TO BE FILLED OUT BY DEALER

VIN:

MILEAGE: **Engine S/N:**

Engine Family: _____

REASON FOR REPLACEMENT:

<input type="checkbox"/>	CLEAN AIR IDLE LABEL MISSING. (EXPLANATION REQUIRED)
<input type="checkbox"/>	CLEAN AIR IDLE LABEL DAMAGED, FADED OR UNREADABLE
<input type="checkbox"/>	OTHER (EXPLANATION REQUIRED)
<input type="checkbox"/>	Explanation: _____

DEALER NUMBER:

DEALER NAME: _____

CONTACT PERSON: _____

ADDRESS: _____

CITY: _____ **STATE:** _____ **ZIP:** _____ **TEL:** (____) _____

For assistance please contact the Distribution Dept at 1-877-478-9828, Prompt 2 then 4

REGULATIONS

California Revenue and Taxation Code Section 6263 states that only vehicle manufacturers or persons authorized by a manufacturer may affix an Emission Control Information Label to a vehicle. Any person who violates this regulation may be subject to a fine and/or imprisonment.

Personnel at franchised dealers are authorized to affix such labels to vehicles and are therefore subject to this regulation and the attendant penalties.

- 1. DO NOT SELL LABELS OVER THE COUNTER, ALWAYS INSTALL THE LABEL ON THE VEHICLE.**
- 2. NEVER INSTALL A LABEL ON A VEHICLE THAT IS NOT A CALIFORNIA/ 50 STATE EMISSION CERTIFIED VEHICLE.**

LABEL INSTALLATION

PREPARATION

Notice: The parts, vehicle, and ambient temperature must be between 60°F and 90°F for optimum installation.

- 1) Clean the entire driver's side surface area above the door badge (Figure 1), where the label will be adhered on door. Wipe the application area with a solution of one part isopropyl alcohol diluted with one part water. Immediately dry the installation area using a clean dry, lint free cloth.

IMPORTANT:

Verify vehicle VIN, engine serial number, and label serial number matches with Vehicle Assignment VIN Creation printout provided by ICTA Distribution (Figure 2). Do not affix the label if the information does not match.



Figure 1

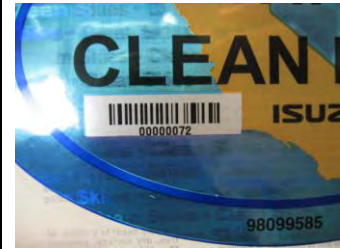


Figure 2

INSTALLATION

- 1) Create a ¼" fold to top portion of the backing (Figure 3).
- 2) Align the bottom portion of the label to the top side and left edge of the door badge, using it as a guide (Figure 4).

Note: Bottom of label should be approximately 1" from top side of door badge.



Figure 3



Figure 4

- 3) Once positioned, press the adhesive portion of the premask to the door to set. Leave an open corner to peel off later (Figure 5).
- 4) Using squeegee, firmly press the label to the door while removing backing (Figure 6).



Figure 5



Figure 6

- 5) Once backing is removed, peel premask off from open corner left earlier (Figure 7).

Caution: DO NOT allow premask to retouch Clean Air Idle label.

- 6) Ensure the label is adhered properly to the door and there are no damages, scratches and/or defects to the label.

Note: If label is damaged, contact ICTA immediately to order replacement.

Keep the printout titled Vehicle Assignment VIN Creation provided in the VIN package on file for future reference.

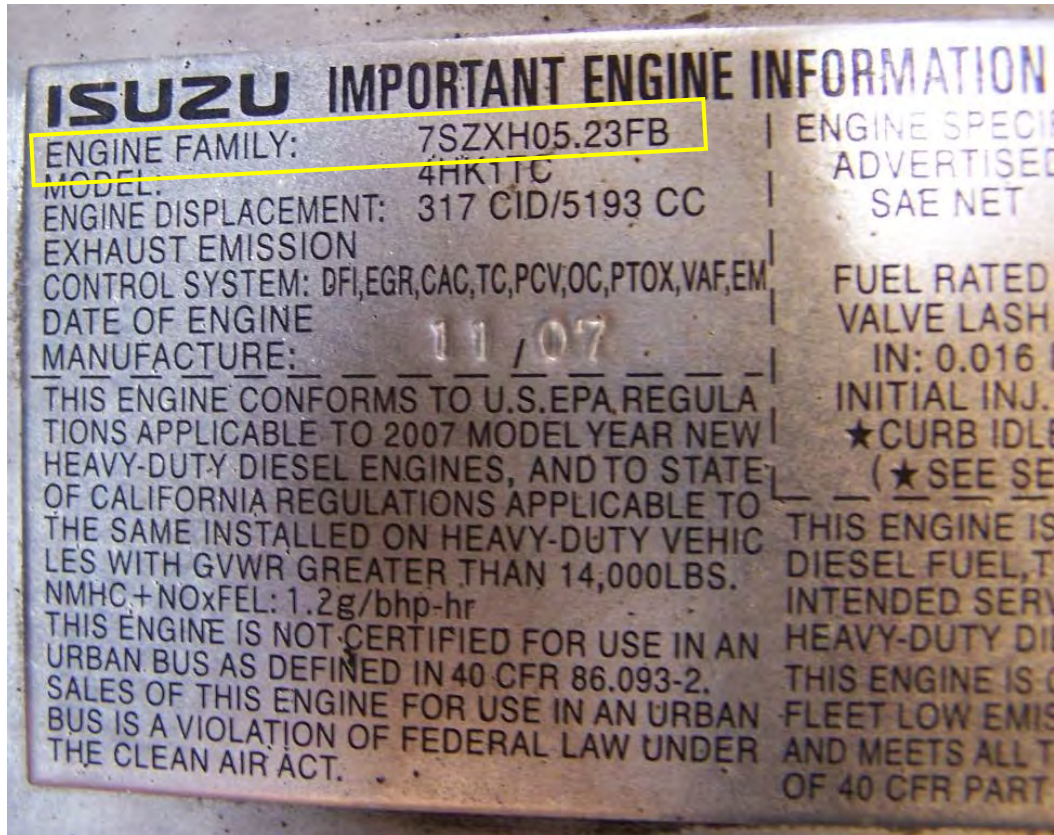


Figure 7



Completed

ENGINE VALVE COVER EMISSIONS LABEL



ENGINE SERIAL NUMBER

