



Technical Bulletin

Model(s)	Year	Eng. Code	Trans. Code	VIN Range From	VIN Range To
Jetta, Beetle, Beetle Cabrio, Golf, Tiguan, CC, Passat, Golf SportWagen, Jetta SportWagen	2013-2017	All	All	All	All

Condition

87 16 15 August 11, 2016 **2043704** Supersedes Technical Bulletin V871612 dated July 19, 2016 to add additional models.

A/C Compressor Replacement, GFF Performance Test Required Regardless of Concern

This bulletin applies to any repair that requires replacement of the air conditioning compressor.

Technical Background

Any replacement of A/C compressors-regardless of the reason for failure-must include an ODIS GFF cooling performance test plan of the A/C system with documentation of the recovered refrigerant volume.



Note:

This GFF test plan requirement is mandatory without exception for reimbursement.

Production Solution

Not applicable.



Technical Bulletin

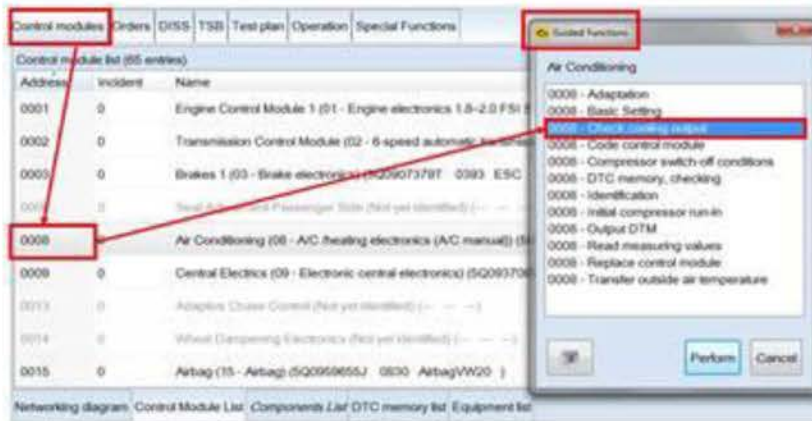
Service

1. Before replacing the A/C compressor perform the ODIS AC Performance Test.



Note:

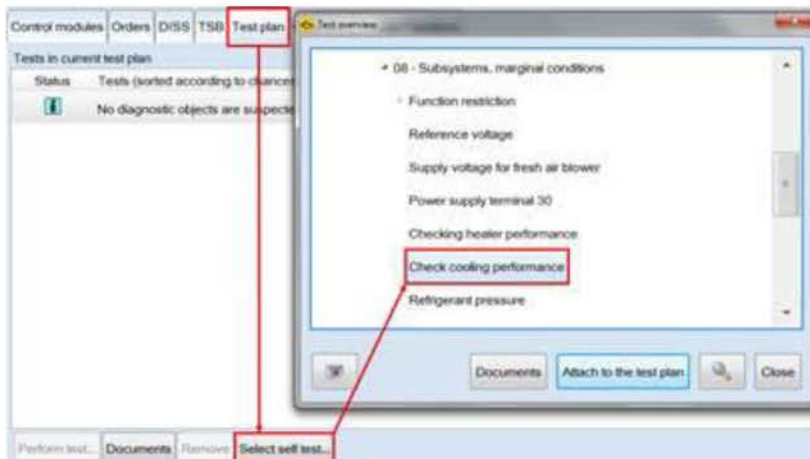
The AC performance test is located in different locations and may be titled differently for different vehicle car lines.



Select Guided Functions from 08 AC/heating electrical control module.

Select Check cooling performance from the Guided functions menu and select perform. (Figure 1)

Figure 1: AC Performance test CC Tiguan, Golf, Golf SportWagen, Jetta SportWagen, Jetta, New Beetle, NBC



Select the Test Plan tab from 08 AC/heating electrical control module.

Select self-test and locate the Check cooling performance test under the following sub menus.

Passat: Body/ Heating Ventilation-Air Conditioning/01 Systems Capable of self-diagnosis/08 Air Conditioning-Heating Electronics/08 Subsystems marginal condition.

Figure 2: AC Performance test, Passat NMS.



Technical Bulletin

2. Follow prompts and complete the test plan.
3. Test result next steps,
 - If A/C performance test returns with no malfunctions, then no repairs are needed. The system is operating properly.
 - If A/C performance test returns a malfunction, perform diagnosis and repair the system as needed.

Note:

All other applicable bulletins apply. See TSB 2043893 for information on required documentation of recovered refrigerant volume.

Warranty

Note:

Claim the time units accumulated from the GFF function test. Time units not to exceed a maximum of 100 TU.

To determine if this procedure is covered under Warranty, always refer to the Warranty Policies and Procedures Manual ¹⁾					
Model(s)	Year	Eng. Code	Trans. Code	VIN Range From	VIN Range To
Jetta, Beetle, Beetle Cabrio, Golf, Tiguan, CC, Passat, Golf SportWagen, Jetta SportWagen	2013-2017	All	All	All	All
SAGA Coding					
Claim Type:		Use applicable Claim Type ¹⁾			
Service Number:	Damage Code	HST		Damage Location (Depends on Service No.)	
8734	0016	--		Use applicable when indicated in Elsa (L/R)	



Technical Bulletin

Causal Part: Select Labor Operation		01500000
Diagnostic Time ⁴⁾		
GFF Time expenditure	01500000 = Actual GFF printout - 100 TU max.	YES
Road Test	01210002 = 00 TU 01210004 = 00 TU	NO
Technical Diagnosis	01320000 = 00 TU max.	NO
Claim Comment: Input "As per Technical Bulletin 2043704" in comment section of Warranty Claim.		
<p>¹⁾ Vehicle may be outside any Warranty in which case this Technical Bulletin is informational only</p> <p>²⁾ Code per warranty vendor code policy.</p> <p>³⁾ Labor Time Units (TUs) are subject to change with ELSA updates.</p> <p>⁴⁾ Documentation required per Warranty Policies and Procedures Manual.</p>		

Required Parts and Tools

No special parts required.

Tool Description	Tool No:
Midtronics Battery Tester/Charger	InCharge 940 (INC-940) or GRX3000VAS
VAS Diagnostic Tool	VAS 6150/X & VAS 6160/X with ODIS Service with: current online updates



Technical Bulletin

Additional Information

All part and service references provided in this Technical Bulletin are subject to change and/or removal. Always check with your Parts Dept. and Repair Manuals for the latest information.

Document Control Revision Table			
Instance Number	Published Date	Version Number	Reason For Update
2043704/4	8/11/16	V871615	To include additional models.
2043704/3	7/19/16	V871612	To include additional models.
2043704/2	5/25/16	V871606	Metadata adjustment
2043704/1	5/25/16	V871606	Original publication.