
February 13, 2015

AWD Indicator Is On with DTC C1850-14

AFFECTED VEHICLES

Year	Model	Trim	VIN Range
2012–14	CR-V	AWD	ALL with AWD

SYMPTOM

On some 2012–14 CR-V's and in cold weather, the AWD indicator may come on with DTC C1850-14 (low or no torque to the rear wheels).

POSSIBLE CAUSES

Over time, moisture and cold weather will cause the AWD relay to fail.

CORRECTIVE ACTION

Replace the AWD relay.

REQUIRED MATERIALS

Part Name	Part Number	Quantity
Power Relay Assembly	39794-SDA-A02	1

WARRANTY CLAIM INFORMATION

The normal warranty applies.

Operation Number	Description	Flat Rate Time	Template ID	Failed Part Number
7301G0	Replace the AWD relay.	0.6 hr	15-012A	39794-SDA-A03

Defect Code: 03217

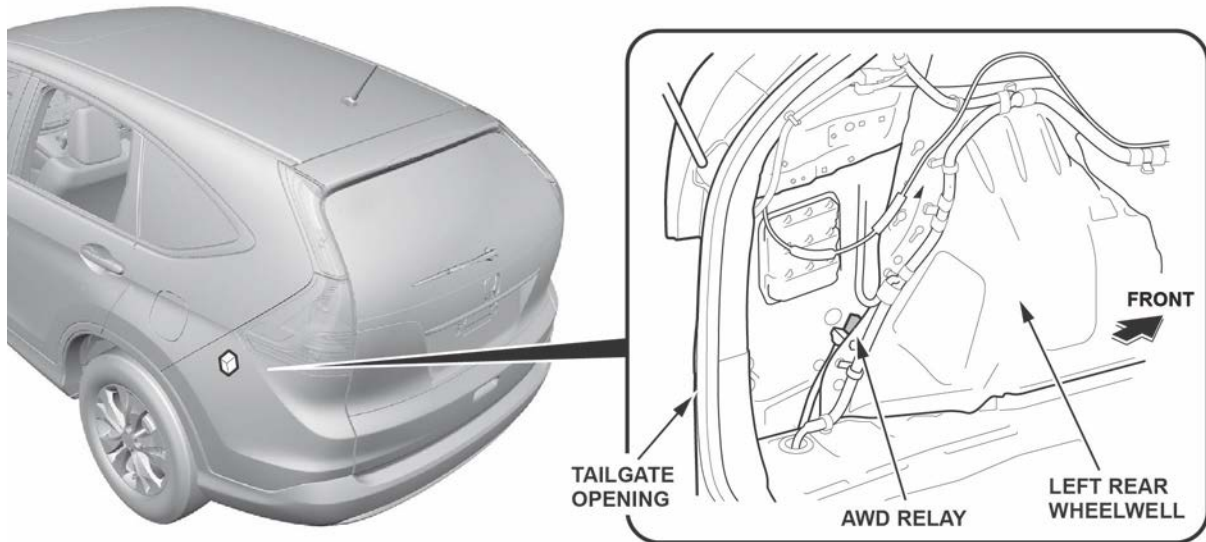
Symptom Code: 03272

Skill Level: Repair Technician

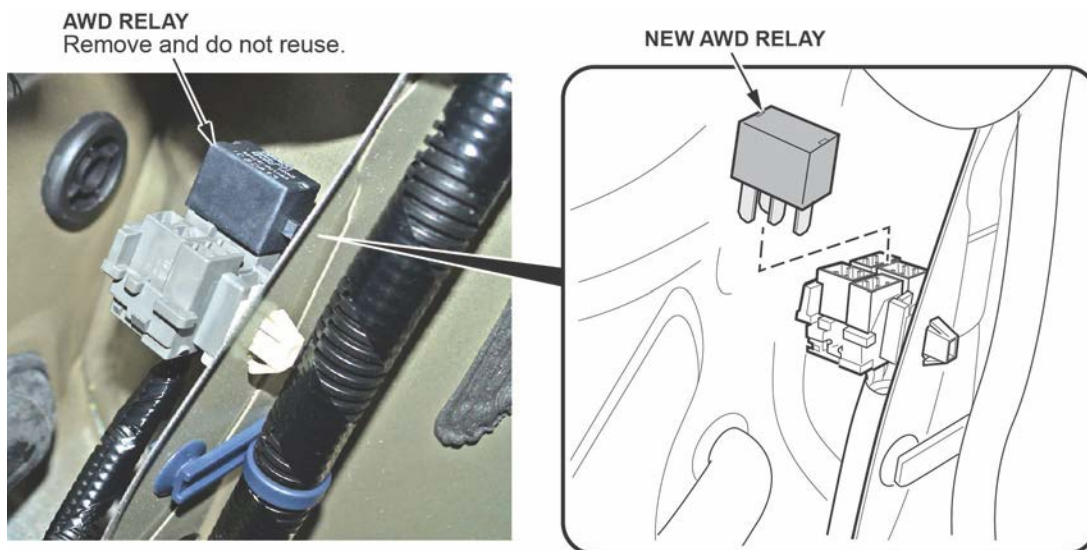
CUSTOMER INFORMATION: The information in this bulletin is intended for use only by skilled technicians who have the proper tools, equipment, and training to correctly and safely maintain your vehicle. These procedures should not be attempted by "do-it-yourselfers," and you should not assume this bulletin applies to your vehicle, or that your vehicle has the condition described. To determine whether this information applies, contact an authorized Honda automobile dealer.

REPAIR PROCEDURE

1. Find and remove the AWD relay (for details on how to do this, see the electronic service manual).



2. Replace the AWD relay.



3. Reinstall the parts in reverse order (see the electronic service manual for details).

END