



SERVICE BULLETIN

Classification: EC15-005b	Reference: NTB15-053b	Date: October 13, 2016
------------------------------	--------------------------	---------------------------

2015 JUKE; MIL ON WITH DTC FOR REAR OXYGEN SENSOR

This bulletin has been amended. Additional information has been included in Step 19. No other changes have been made. Please discard previous versions of this bulletin.

APPLIED VEHICLE: 2015 Juke (F15)

IF YOU CONFIRM

One or more of the following DTCs is stored:

- **P0037** - HO2 HTR (B1) (Heated oxygen sensor 2 heater control circuit low)
- **P0038** - HO2 HTR (B1) (Heated oxygen sensor 2 heater control circuit high)
- **P0137** - HO2S2 (B1) (Heated oxygen sensor 2 circuit low voltage)
- **P0138** - HO2S2 (B1) (Heated oxygen sensor 2 circuit high voltage)
- **P0139** - HO2S2 (B1) (Heated oxygen sensor 2 circuit slow response)
- **P2096** - POST CAT FUEL TRIM SYS B1 (Post catalyst fuel trim system too lean bank 1)
- **P2097** - POST CAT FUEL TRIM SYS B1 (Post catalyst fuel trim system too rich bank 1)

ACTION

1. Refer to step 6 in the **SERVICE PROCEDURE** to confirm this bulletin applies to the vehicle you are working on.

If this bulletin applies:

2. Replace the rear O2 sensor.
3. Reprogram the ECM.

IMPORTANT: The purpose of ACTION (above) is to give you a quick idea of the work you will be performing. You **MUST** closely follow the entire SERVICE PROCEDURE as it contains information that is essential to successfully completing this repair.

Nissan Bulletins are intended for use by qualified technicians, not 'do-it-yourselfers'. Qualified technicians are properly trained individuals who have the equipment, tools, safety instruction, and know-how to do a job properly and safely. NOTE: If you believe that a described condition may apply to a particular vehicle, DO NOT assume that it does. See your Nissan dealer to determine if this applies to your vehicle.

SERVICE PROCEDURE

Reprogram the ECM

NOTE:

- Most instructions for reprogramming with CONSULT-III plus (C-III plus) are displayed on the CONSULT PC screen.
- If you are not familiar with the reprogramming procedure, [click here](#). This will link you to the "CONSULT- III plus (C-III plus) ECM Reprogramming" general procedure.
- Take the vehicle for a 10 minute drive in order to meet the following Idle Air Volume Learn (IAVL) conditions:
 - Engine coolant temperature: 70 -100°C (158 -212°F)
 - Battery voltage: More than 12.9V (At idle)
 - Transmission: Warmed up
- After reprogramming is complete, you will be required to perform Throttle Valve Closed Position, Idle Air Volume Learn, Accelerator Closed Position, and DTC erase.



Figure A

CAUTION:

- Connect the GR8 to the 12V battery and select ECM Power Supply Mode. If the vehicle battery voltage drops below 12.0V or above 15.5V during reprogramming, the ECM may be damaged.
- Be sure to turn OFF all vehicle electrical loads. If a vehicle electrical load remains ON, the ECM may be damaged.
- Be sure to connect the AC Adapter. If the CONSULT PC battery voltage drops during reprogramming, the process will be interrupted and the ECM may be damaged.
- Turn off all external Bluetooth® devices (e.g., cell phones, printers, etc.) within range of the CONSULT PC and the VI. If Bluetooth® signal waves are within range of the CONSULT PC during reprogramming, reprogramming may be interrupted and the ECM may be damaged.

1. Connect the CONSULT PC to the vehicle to begin the reprogramming procedure.
2. Start C-III plus.
3. Wait for the plus VI to be recognized / connected.
 - The serial number will display when the plus VI is recognized / connected.
4. Select **Re/programming, Configuration**.

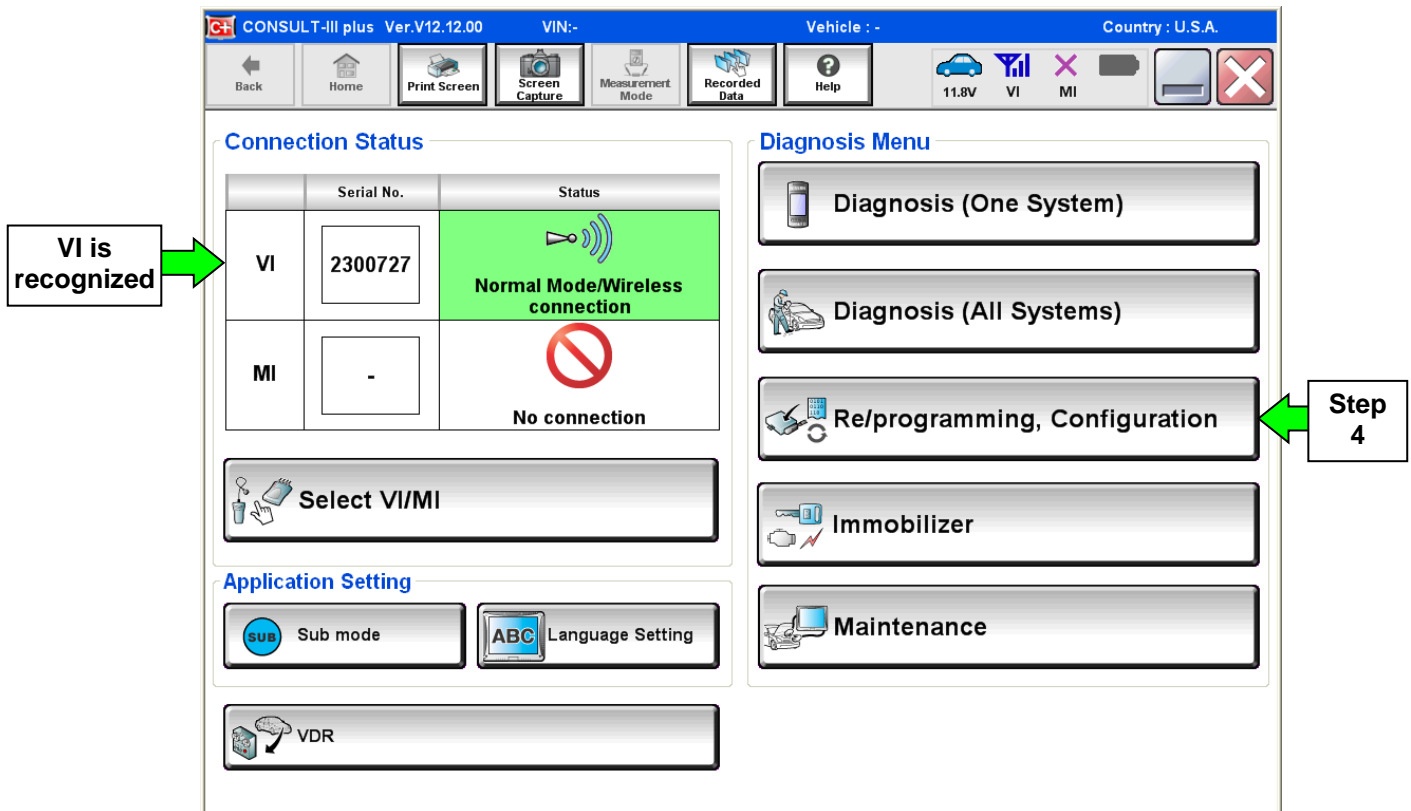


Figure 1

5. Follow the on-screen instructions and navigate the C-III plus to the screen shown in Figure 2 on the next page.

6. When you get to the screen shown in Figure 2, confirm this bulletin applies as follows.

A. Find the ECM **Part Number** and write it on the repair order.

NOTE: This is the current ECM Part Number (P/N).

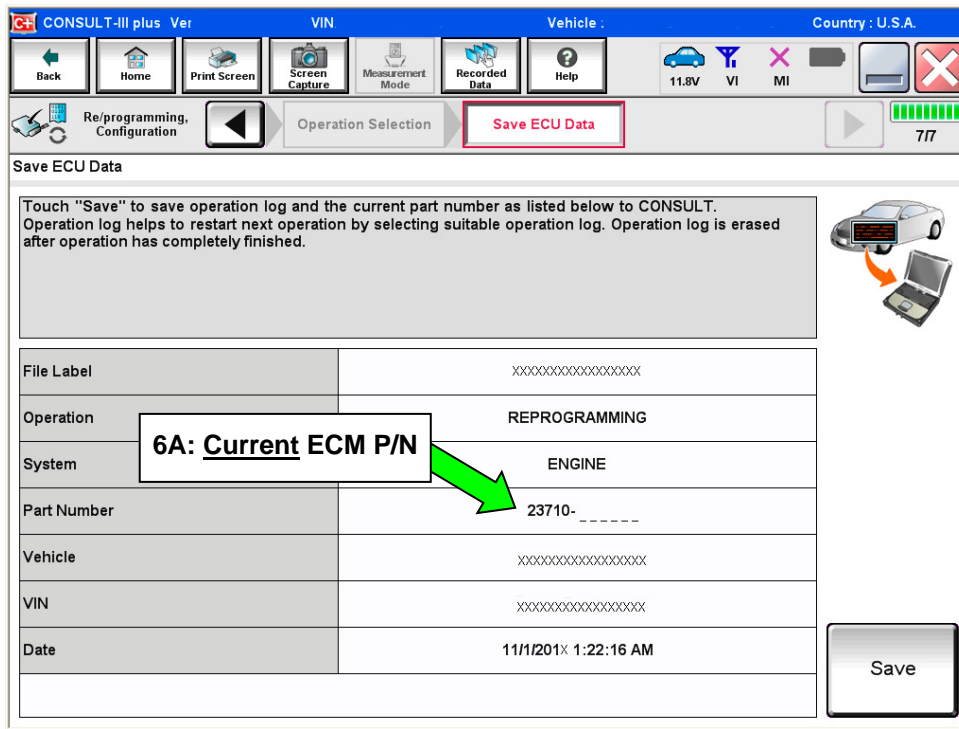


Figure 2

B. Compare the P/N you wrote down to the numbers in the **Current ECM Part Number** column in **Table A**.

- If there is a match, this bulletin applies. Continue with the reprogramming procedure.
- If there is not a match, this bulletin does not apply. Close C-III plus and refer to ASIST for further diagnostic information.

Table A

MODEL	CURRENT ECM PART NUMBER: 23710-
2015 Juke	3YM4A, 3YM4B, 3YM4C, 3YM4D, 3YM4E
	3YM5A, 3YM5B, 3YM5C, 3YM5D, 3MY5E
	3YM6A, 3YM6B, 3YM6C, 3YM6D, 3YM6E
	3YM7A, 3YM7B, 3YM7C, 3YM7D, 3YM7E
	3YM2A, 3YM2B, 3YM2C, 3YM2D, 3YM2E
	3YM3A, 3YM3B, 3YM3C, 3YM3D, 3YM3E
	4DT0A, 4DT0B
	4DT1A, 4DT1B
	4DT2A, 4DT3A, 4DT4A, 4DT5A

7. Follow the on-screen instructions to navigate C-III plus and reprogram the ECM.

NOTE:

- In some cases, more than one new P/N for reprogramming is available.
 - In this case, the screen in Figure 3 displays.
 - Select and use the reprogramming option that **does not** have the message “Caution! Use ONLY with NTBXX-XXX”.
- If you get this screen and it is blank (no reprogramming listed), it means there is no reprogramming available for this vehicle. Close C-III plus and refer back to ASIST for further diagnosis.

IMPORTANT: If C-III plus locks up or freezes at this point or displays “cannot complete reprogramming, CONSULT PC is set up with User Rights. Reprogramming can be completed with Administrator log in”, the TOUGHBOOK settings need to be changed so that Users have full access rights. See your Dealership’s IT System Administrator for details.

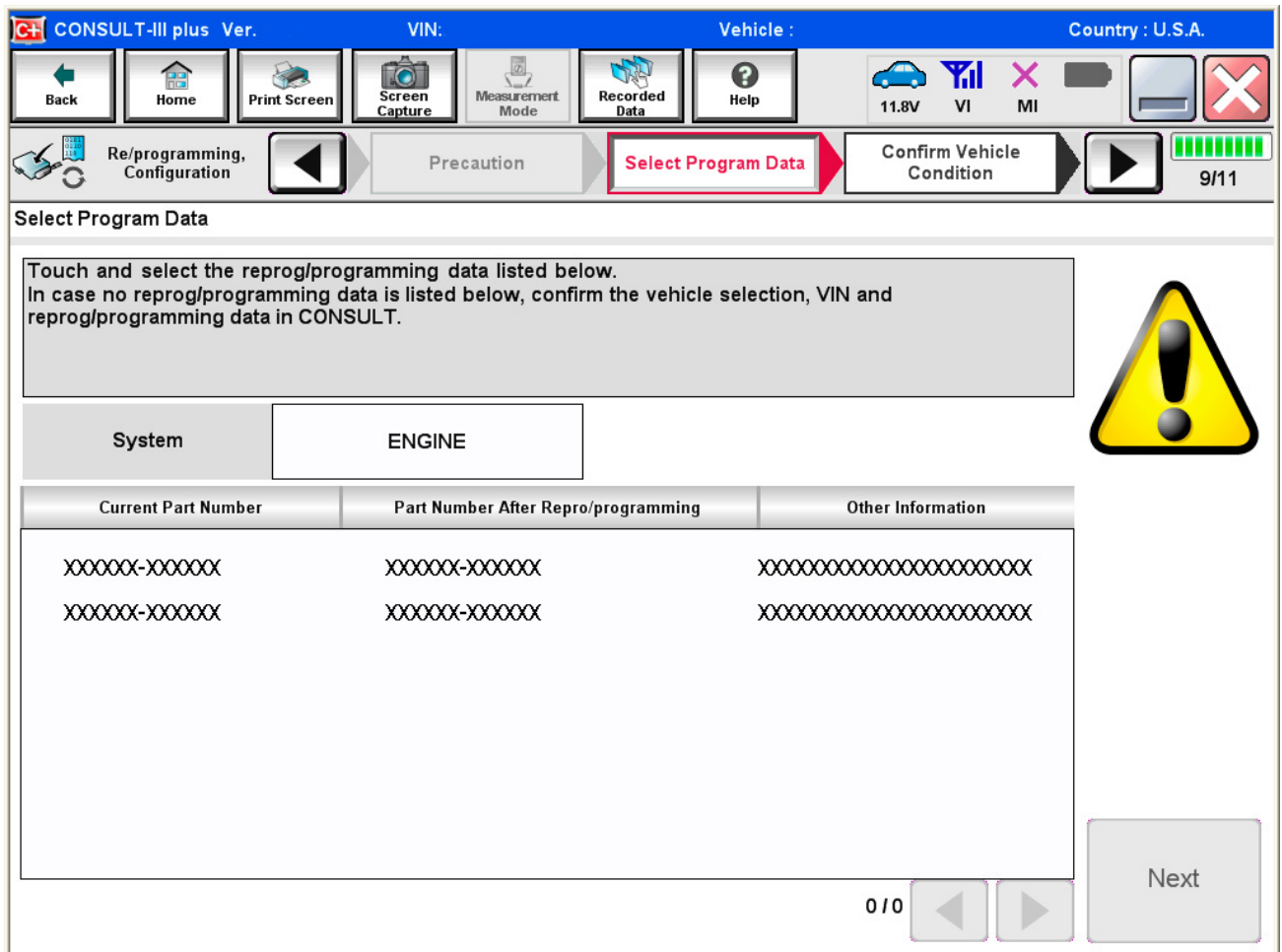


Figure 3

8. When the screen in Figure 4 displays, reprogramming is complete.

NOTE: If the screen in Figure 4 does not display (reprogramming does not complete), refer to the information on page 7.

9. Disconnect the battery charger from the vehicle.

10. Select **Next**.

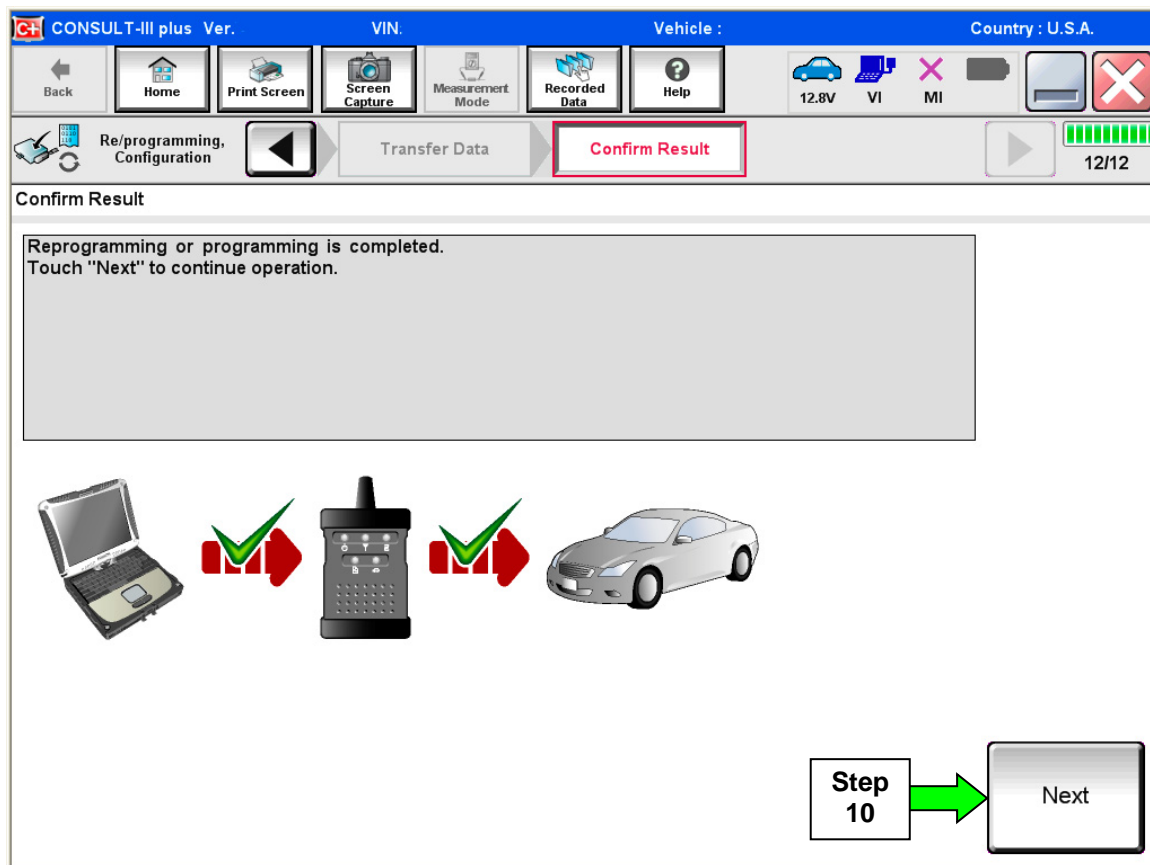


Figure 4

NOTE:

- In the next steps, starting on page 8, you will perform Throttle Valve Closed Position, Idle Air Volume Learn, Accelerator Closed Position, and DTC erase.
- These operations are required before C-III plus will provide the final reprogramming confirmation report.

ECM recovery:

Do not disconnect plus VI or shut down Consult III plus if reprogramming does not complete.

If reprogramming does not complete and the “!” icon displays as shown in Figure 5:

- Check battery voltage (12.0–15.5 V).
- Ignition is ON, engine OFF.
- External Bluetooth® devices are OFF.
- All electrical loads are OFF.
- **Select retry and follow the on screen instructions.**
- “Retry” may not go through on first attempt and can be selected more than once.

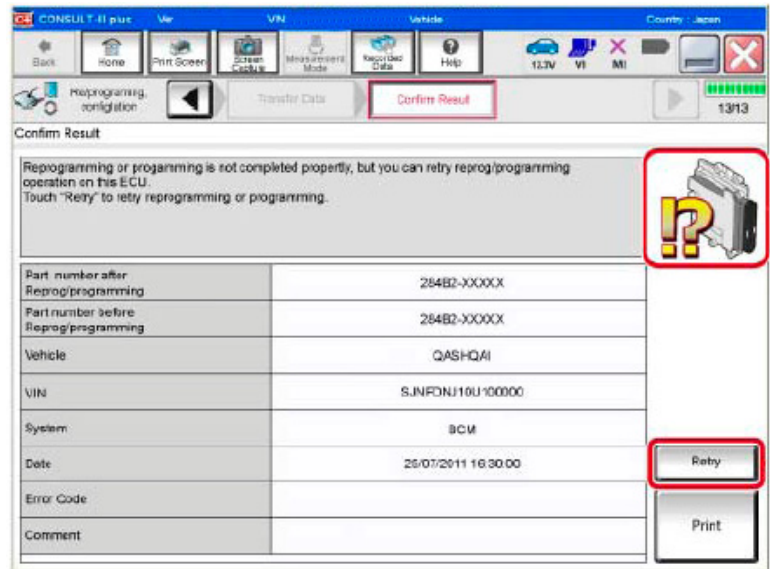


Figure 5

If reprogramming does not complete and the “X” icon displays as shown in Figure 6:

- Check battery voltage (12.0 – 15.5 V).
- CONSULT A/C adapter is plugged in.
- Ignition is ON, engine OFF.
- Transmission is in Park.
- All C-III plus / VI cables are securely connected.
- All C-III plus updates are installed.
- **Select Home, and restart the reprogram procedure from the beginning.**

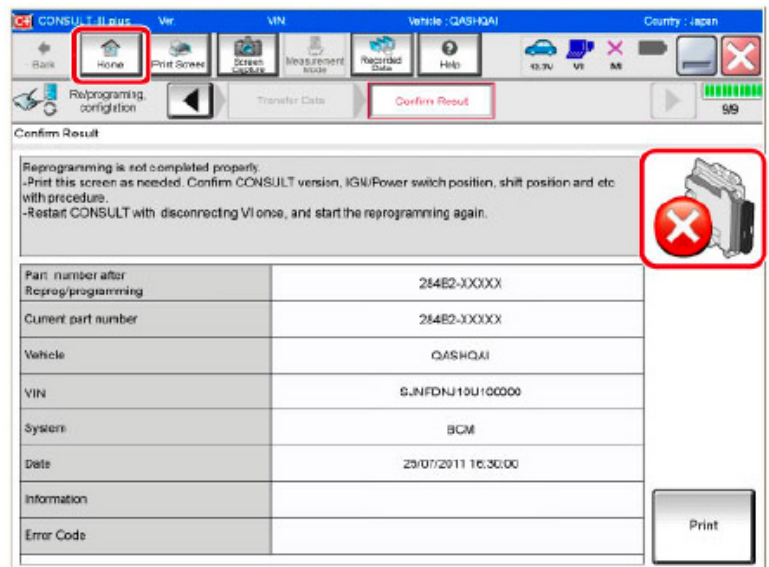


Figure 6

11. Follow the on-screen instructions to perform the following:

- **Throttle Valve Closed Position.**
- **Idle Air Volume Learn (IAVL).**

NOTE:

- **Listed below are common conditions required for IAVL to complete.**
 - **If IAVL does not complete within a few minutes, a condition may be out of range.**
 - **Refer to the appropriate ESM for specific conditions required for the vehicle you are working on.**
 - Engine coolant temperature: 70 -100° C (158 -212°F)
 - Battery voltage: More than 12.9V (At idle)
 - Selector lever: P or N
 - Electric load switch: OFF (Air conditioner, headlamp, rear window defogger)
 - Steering wheel: Neutral (Straight-ahead position)
 - Vehicle speed: Stopped
 - Transmission: Warmed up
-
- **Accelerator Pedal Close Position Learning**
 - **Erase DTCs**

Continue to the next page.

12. When the entire reprogramming process is complete, the screen in Figure 7 will display.

13. Verify the before and after part numbers are different.

14. Print a copy of this screen (Figure 7) and attach it to the repair order for warranty documentation.

15. Select **Confirm**.

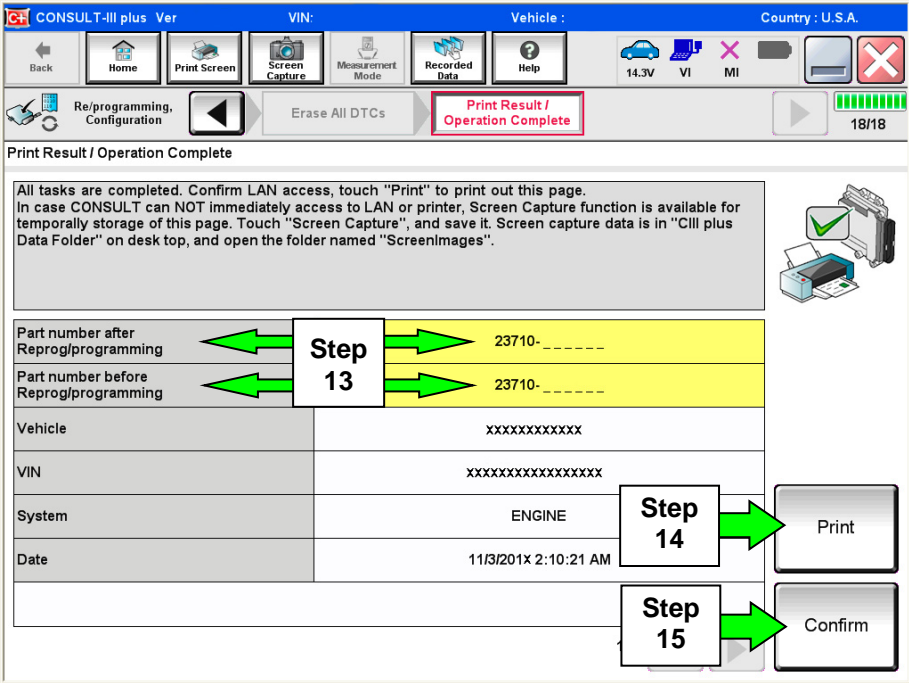


Figure 7

16. Close C-III plus.

17. Turn the ignition OFF.

18. Disconnect the plus VI from the vehicle.

Replace Rear O2 Sensor

19. Replace the rear O2 sensor.

For Standard Juke 2WD:

- Refer to the Electronic Service Manual (ESM), section **EX – Exhaust System / REMOVAL AND INSTALLATION / EXHAUST SYSTEM / Removal and Installation**

For Standard Juke AWD:

- Refer to the ESM, section **EM – Engine Mechanical / MR EXCEPT FOR NISMO RS MODELS / UNIT DISASSEMBLY AND ASSEMBLY / CATALYST / AWD / AWD: Removal and Installation**

For NISMO RS Juke 2WD:

- Refer to the ESM, section **EX – Exhaust System / REMOVAL AND INSTALLATION / EXHAUST SYSTEM / Removal and Installation**

For NISMO RS Juke AWD:

- Refer to the ESM, section **EM – Engine Mechanical / MR FOR NISMO RS MODELS / REMOVAL AND INSTALLATION / CATALYST / AWD / AWD: Removal and Installation**

For NISMO (Non-RS) Juke 2WD:

- Refer to the ESM, section **EX – Exhaust System / REMOVAL AND INSTALLATION / EXHAUST SYSTEM / Removal and Installation**

For NISMO (Non-RS) Juke AWD:

- Refer to the ESM, section **EM – Engine Mechanical / MR EXCEPT FOR NISMO RS MODELS / UNIT DISASSEMBLY AND ASSEMBLY / CATALYST / AWD / AWD: Removal and Installation**

PARTS INFORMATION

DESCRIPTION	PART NUMBER	QUANTITY
Oxygen Sensor	226A0-BV81A (AWD)	1
	226A0-4LA1A (2WD)	

CLAIMS INFORMATION

Submit a Primary Part (PP) line claim using the following claims coding:

DESCRIPTION	OP CODE	PFP	SYM	DIAG	FRT
Reprogram Engine Control Module - ECM	DE97AA	(1)	ZE	32	(2)
Rpl One Air/Fuel Ratio Sensor	DE53AA				

- (1) Refer to the electronic parts catalog (FAST) and use the Oxygen Sensor part number (226A0-*****) as the Primary Part (PFP).
- (2) Reference the current Nissan Warranty Flat Rate Manual and use the indicated flat rate time.

