


Thump Noise from Rear as Suspension Returns to Rest Position

Service
Category Brake

Section Brake (rear)

Market USA

Lexus Supports
ASE Certification 

Applicability

YEAR(S)	MODEL(S)	ADDITIONAL INFORMATION
2010 – 2015	RX350	

Introduction

Some 2010 – 2015 model year RX 350 vehicles may exhibit an abnormal noise from the rear cabin area of the vehicle when moving forward and lightly braking. The noise is usually described as a thump noise at the end of a stop as the rear suspension returns to a rest position. A new Rear Disc Brake Anti-Squeal Shim Kit, Rear Disc Brake Pad Fitting Kit, and Rear Disc Brake Cylinder Mounting Brackets are available to address this condition.

NOTE

For vehicles produced BEFORE the Production Change Effective VINs (see the Diagnostic Procedure for VIN numbers) the Slide Pins No. 1 and No. 2, Dust Boots, and Slide Pin Bushing No. 1 need to be replaced in order to accept the NEW field fix Rear Disc Cylinder Mounting Brackets.

Warranty Information

OP CODE	DESCRIPTION	TIME	OFP	T1	T2
BR1400	Remove and Install New Rear Brake Shim Kit, Rear Brake Fitting Kit and Rear Brake Mounting Brackets	1.0	47821-0E020 47821-0E021 47822-0E020 47822-0E021 47821-48100 47821-48101 47822-48100 47822-48101	91	99

APPLICABLE WARRANTY

- This repair is covered under the Lexus Basic Warranty. This warranty is in effect for 48 months or 50,000 miles, whichever occurs first, from the vehicle's in-service date.
- Warranty application is limited to occurrence of the specified condition described in this bulletin.

Thump Noise from Rear as Suspension Returns to Rest Position

Parts Information

NOTE

See the Diagnostic Procedure to determine which Repair Procedure to perform.

REPAIR PROCEDURE	PART NUMBER		PART NAME	QTY
	PREVIOUS	NEW		
1 & 2	04946-0E030 04946-48110	04946-0E070	Shim Kit, Anti-Squeal, RR	1
	04948-48050 04948-30230	04948-48090	Fitting Kit, Disc Brake, RR	1
	47821-0E020 47821-0E021 47821-48100 47821-48101	47821-0E100	Mounting, RR Disc Brake, RH	1
	47822-0E020 47822-0E021 47822-48100 47822-48101	47822-0E100	Mounting, RR Disc Brake, LH	1
	04466-0E010 04466-48130		Pad Kit, Disc Brake L/Fitting Parts, RR*	1
1	47814-48100 47814-0E020	47814-06120	No. 1 Slide Pin	2
	47815-48100 47815-0E020	47815-06120	No. 2 Slide Pin	2
	04479-0E020 04479-48130	04479-48150	Cylinder Kit, Disc Brake, Rear**	1

* Inspect brake pads and only replace if needed.

** Only Replace Slide Pin Boots and Bushing included in Kit.

Thump Noise from Rear as Suspension Returns to Rest Position

Diagnostic Procedure

1. Test drive the vehicle to confirm the condition.

[Condition Noise Example Video](#)

Is the condition noise present?

- **YES** — Continue to step 2.
- **NO** — This bulletin does NOT apply. Continue diagnosis using the applicable Repair Manual.

2. Check the vehicle's VIN to determine which Repair Procedure to follow.

Repair Procedure 1:

- All 2010 – 2012 model year RX 350 vehicles produced **BEFORE** the Production Change Effective VINs shown below.

PLANT	PRODUCTION CHANGE EFFECTIVE VIN
TMMK	JTJBC1BA#C2427366
	JTJBK1BA#C2443979
	JTJZB1BA#C2406735
	JTJZK1BA#C2412848
TMMC	2T2BK1BA#CC125377
	2T2ZK1BA#CC067245

Repair Procedure 2:

- All 2012 – 2015 model year RX 350 vehicles produced **AFTER** the Production Change Effective VINs shown in the table above.

Thump Noise from Rear as Suspension Returns to Rest Position

Repair Procedure 1

1. Remove Rear Disc Brake Pads, Anti-Squeal Shim Kit, Disc Brake Pad Fitting Kit, and Disc Brake Cylinder Mounting Brackets, No. 1 and No. 2 Slide Pins, No. 1 Slide Pin Bushing, and boots for No. 1 and No. 2 Slide Pins.

Refer to the Technical Information System (TIS), applicable model and model year Repair Manual:

- [2010 \(12/2008 – 08/2009\)](#) / [2010 \(08/2009 – \)](#) / [2012](#) / [2013](#) / [2014](#) / [2015](#) RX 350:
Brake – Brake (rear) – “Brake (rear): Rear Brake: Removal”

2. Inspect the rear brakes.

Refer to TIS, applicable model and model year Repair Manual:

- [2010 \(12/2008 – 08/2009\)](#) / [2010 \(08/2009 – \)](#) / [2011](#) / [2012](#) / [2013](#) / [2014](#) / [2015](#) RX 350:
Brake – Brake (rear) – “Brake (rear): Rear Brake: Inspection”

3. Install the NEW service part Rear Disc Brake Anti-Squeal Shim Kit, Disc Brake Pad Fitting Kit, and Disc Brake Cylinder Mounting Brackets, No. 1 and No. 2 Slide Pins, No. 2 Slide Pin Bushing, and boots for No. 1 and No. 2 Slide Pins and rear brake pads (if need to be replaced).

NOTICE

Install Brake Pad Support Clips 1 and 2 on the bottom side of the Rear Disc Mounting Brackets.

NOTE

The NEW Brake Pad Support Clips have PET tape attached to the back side of the clip.

NOTICE

- When installing the NEW rear brake shims to rear brake pads, do NOT apply disc brake grease to shims or disc brake pad backing plate.
- If reinstalling the USED pads, remove all shim grease from the backing plates BEFORE installing shims.
- *Assemble these parts dry.*

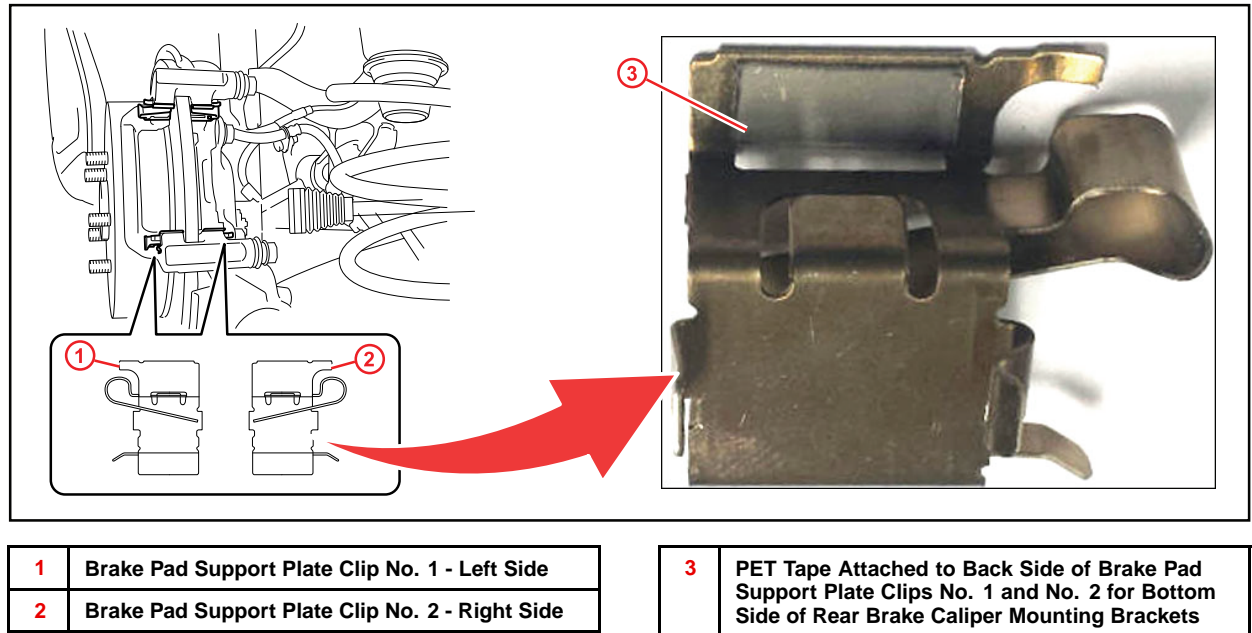
Figure 1. NEW 1-Piece Rear Brake Shim



Thump Noise from Rear as Suspension Returns to Rest Position

Repair Procedure 1 (Continued)

Figure 2.



Refer to TIS, applicable model and model year Repair Manual:

- [2010 \(12/2008 – 08/2009\)](#) / [2010 \(08/2009 – \)](#) / [2011](#) / [2012](#) / [2013](#) / [2014](#) / [2015](#) RX 350: *Brake – Brake (rear) – “Brake (rear): Rear Brake: Installation”*

4. Install rear disc brake cylinder assembly to rear brake mounting.

Refer to TIS, applicable model and model year Repair Manual:

- [2010 \(12/2008 – 08/2009\)](#) / [2010 \(08/2009 – \)](#) / [2011](#) / [2012](#) / [2013](#) / [2014](#) / [2015](#) RX 350: *Brake – Brake (rear) – “Brake (rear): Rear Brake: Installation”*

5. Road test the vehicle to confirm the condition has been corrected.

Repair Procedure 2

1. Remove Rear Disc Brake Pads, Anti-Squeal Shim Kit, Disc Brake Pad Fitting Kit, Rear Disc Brake Cylinder Mounting Brackets.

Refer to the Technical Information System (TIS), applicable model and model year Repair Manual:

- [2010 \(12/2008 – 08/2009\)](#) / [2010 \(08/2009 – \)](#) / [2012](#) / [2013](#) / [2014](#) / [2015](#) RX 350: *Brake – Brake (rear) – “Brake (rear): Rear Brake: Removal”*

Thump Noise from Rear as Suspension Returns to Rest Position

Repair Procedure 2 (Continued)

2. Inspect the rear brakes.

Refer to TIS, applicable model and model year Repair Manual:

- [2010 \(12/2008 – 08/2009\)](#) / [2010 \(08/2009 –\)](#) / [2011](#) / [2012](#) / [2013](#) / [2014](#) / [2015](#) RX 350: *Brake – Brake (rear) – “Brake (rear): Rear Brake: Inspection”*
3. Install the NEW service part Rear Disc Brake Anti-Squeal Shim Kit, Disc Brake Pad Fitting Kit, and Disc Brake Cylinder Mounting Brackets.

NOTICE

Install Brake Pad Support Clips 1 and 2 on the bottom side of the Rear Disc Mounting Brackets.

NOTE

The NEW Brake Pad Support Clips have PET tape attached to the back side of the clip.

NOTICE

- When installing the NEW rear brake shims to rear brake pads, do NOT apply disc brake grease to shims or disc brake pad backing plate.
- If reinstalling the USED pads, remove all shim grease from the backing plates BEFORE installing shims.
- *Assemble these parts dry.*

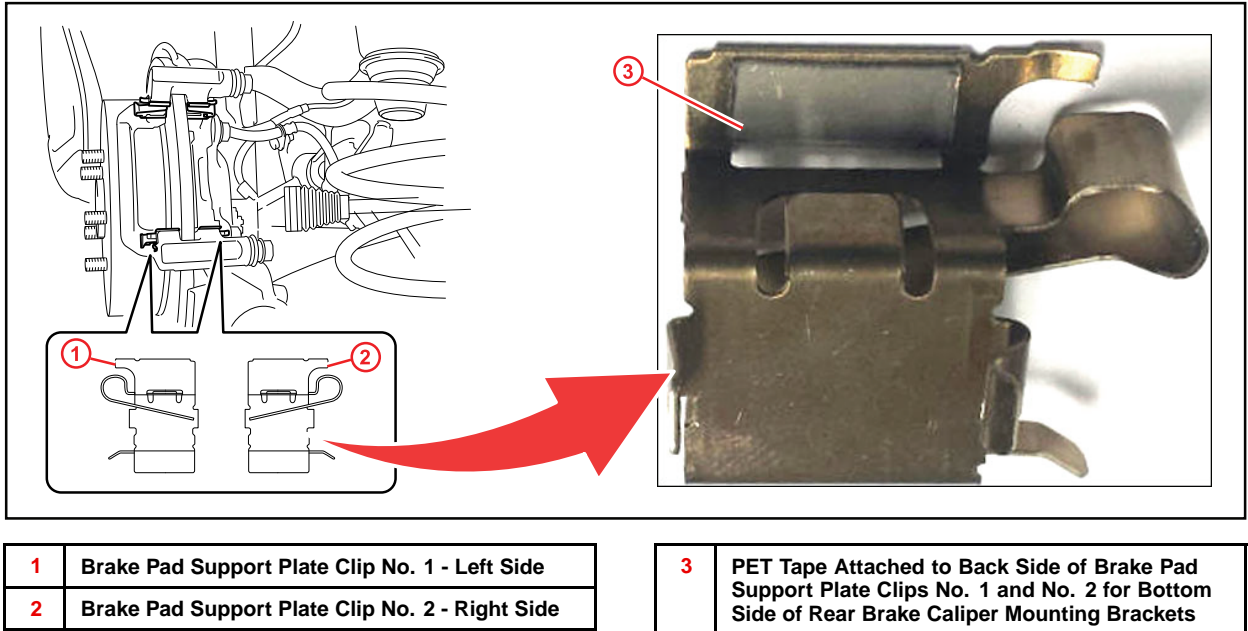
Figure 3. NEW 1-Piece Rear Brake Shim



Thump Noise from Rear as Suspension Returns to Rest Position

Repair Procedure 2 (Continued)

Figure 4.



Refer to TIS, applicable model and model year Repair Manual:

- [2010 \(12/2008 – 08/2009\)](#) / [2010 \(08/2009 – \)](#) / [2011](#) / [2012](#) / [2013](#) / [2014](#) / [2015](#) RX 350: *Brake – Brake (rear) – “Brake (rear): Rear Brake: Installation”*
4. Install rear disc brake cylinder assembly to rear brake mounting.
- Refer to TIS, applicable model and model year Repair Manual:
- [2010 \(12/2008 – 08/2009\)](#) / [2010 \(08/2009 – \)](#) / [2011](#) / [2012](#) / [2013](#) / [2014](#) / [2015](#) RX 350: *Brake – Brake (rear) – “Brake (rear): Rear Brake: Installation”*
5. Road test the vehicle to confirm the condition has been corrected.