



GROUP
BOD

MODEL
2017MY
Forte (YD, YDm) 5-Door

NUMBER
168

DATE
March 2017

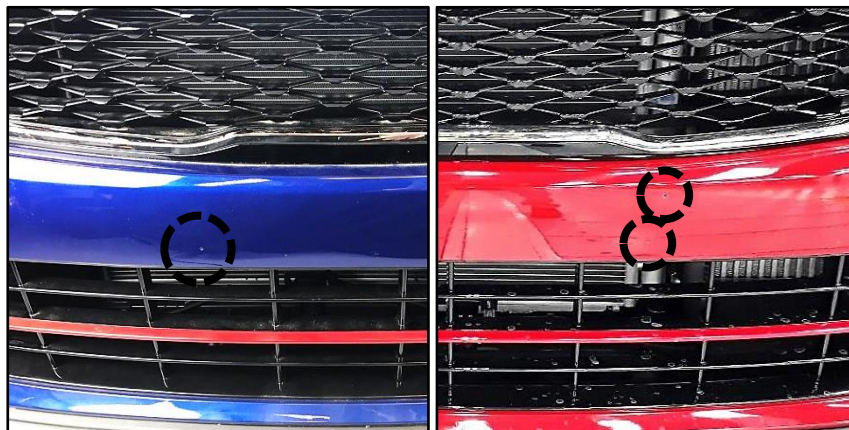
TECHNICAL SERVICE BULLETIN

SUBJECT: FRONT LICENSE PLATE BRACKET INSTALLATION

This bulletin provides information on front license plate bracket installation on some 2017MY Forte (YD, YDm) 5-Door vehicles which may not have corresponding dimples for the insertion of the front license plate bracket guide pins. Follow the procedure outlined in this bulletin to modify the front license plate bracket if necessary. Only perform the procedure if the vehicle does not have corresponding dimples for the insertion of the guide pins.



Front License Plate Bracket



Front Bumper with only
Plate Bracket Dimples and
without Guide Pin Dimples

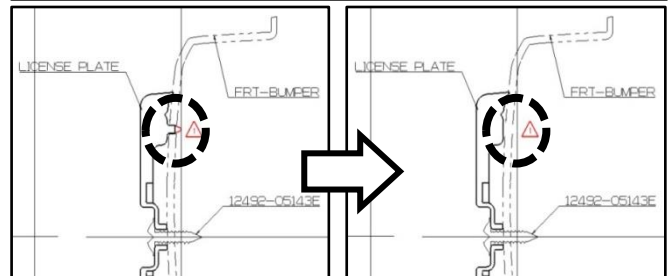
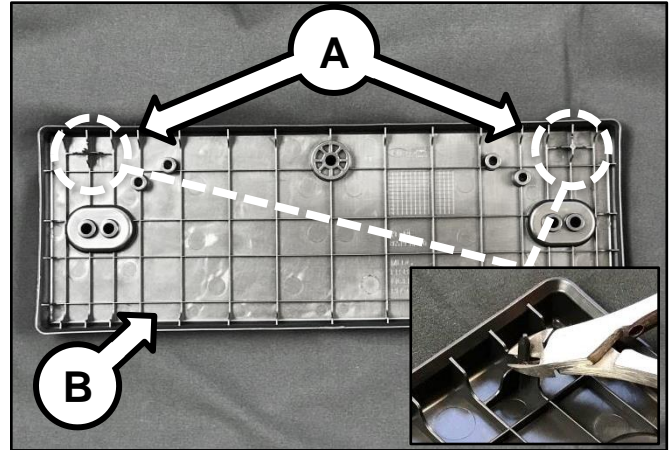
Front Bumper with both
Plate Bracket and
Guide Pin Dimples

File Under: <Body>

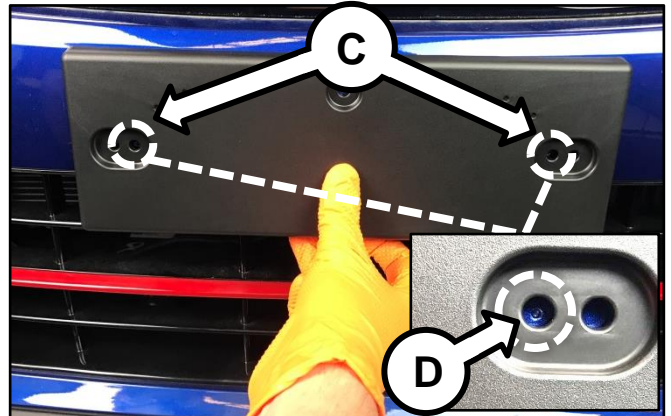
Circulate To: General Manager Service Manager Parts Manager
 Service Advisors Technicians Body Shop Manager Fleet Repair

Procedure:

- Using side-cutting pliers, cut off the two (2) upper guide pins (A) located on the back of the bracket (B).



- Align the two (2) inner holes (C) of the license plate bracket to the two (2) dimples (D) on the front bumper.



- Install the three (3) retaining screws (E) to secure the license plate bracket and ensure the bracket is flush with the front bumper.

*** NOTICE**

Only perform this procedure to cut the guide pins if the front bumper is missing the corresponding dimples shown on page 1.