	GROUP <b>ENG</b>	MODEL <b>2012-2016MY Rio (UB) 2014-2016MY Soul (PS) 1.6GDI 2012-2013MY Soul (AM) 1.6GDI</b>
	NUMBER <b>164</b>	DATE <b>February 2017</b>

## TECHNICAL SERVICE BULLETIN

**SUBJECT: COMBINATION TSB / SERVICE ACTION: ECU  
UPGRADE – DTC P0441 LOGIC IMPROVEMENT (SA280)**

This bulletin provides information related to the Engine Control Unit (ECU) software upgrade for some 2012-2016MY Rio (UB), 2014-2016 Soul (PS), and 2012-2013MY Soul (AM) vehicles, which may have a MIL on with **DTC P0441: Evaporative Emissions System Incorrect Purge Flow**. To correct this condition, the ECU should be reprogrammed using the KDS download as described in this bulletin. For confirmation that the latest reflash has been applied to a vehicle you are working on, verify the ROM ID, using the tables in this TSB.

For vehicles not on the Affected Vehicles list, but with a concern as described above, perform the procedure outlined in this bulletin and submit a warranty claim per “customer concern” (Standard TSB) claim information on page 16.



Kia Diagnostic System (KDS)

**File Under: <Engine>**

---

**Circulate To:**     General Manager     Service Manager     Parts Manager  
 Service Advisors     Technicians     Body Shop Manager     Fleet Repair

**\* NOTICE**

A Service Action is a repair program without customer notification that is performed during the warranty period. Any dealer requesting to perform this repair outside the warranty period will require DPSM approval.

Repair status for a VIN is provided on WebDCS (Service → Warranty Coverage → Warranty Coverage Inquiry → Campaign Information). Not completed Recall / Service Action reports are available on WebDCS (Consumer Affairs → Not Completed Recall → Recall VIN → Select Report), which includes a list of affected vehicles.

This issue number is SA280.

**ECU Upgrade Procedure:**

To correct this condition, the ECU should be reprogrammed using the KDS download, as described in this bulletin.

**UPGRADE EVENT #308**

308. UB GAMMA 1.6GDI MIL ON DTC (P0441) LOGIC IMPROVEMENT

**UPGRADE EVENT #309**

309. PS GAMMA 1.6GDI MIL ON DTC (P0441) LOGIC IMPROVEMENT

**UPGRADE EVENT #310**

310. AM GAMMA 1.6GDI MIL ON DTC (P0441) LOGIC IMPROVEMENT

**\* NOTICE**

- A fully charged battery is necessary before ECU upgrade can take place. It is recommended that the Midtronics GR8-1299 system be used in ECU mode during charging. DO NOT connect any other battery charger to the vehicle during ECU upgrade.
- All ECU upgrades must be done with the ignition key in the 'ON' position.
- Be careful not to disconnect any cables connected to the vehicle or KDS during the ECU upgrade procedure.
- DO NOT start the engine during ECU upgrade.
- DO NOT turn the ignition key 'OFF' or interrupt the power supply during ECU upgrade.
- When the ECU upgrade is completed, turn the ignition 'OFF' and wait 10 seconds before starting the engine.
- ONLY use approved ECU upgrade software designated for the correct model, year.

**CAUTION**

Before attempting an ECU upgrade on any Kia model, make sure to determine whether the particular model is equipped with an immobilizer security system. Failure to follow proper procedures may cause the ECU to become inoperative after the upgrade and any claims associated with this repair may be subject to chargeback.

**ROM ID INFORMATION TABLES:****Upgrade Event #308 Rio (UB)**

MODEL	TM	ISG	IMMO	ECM P/NO.	ROM ID	
					Previous	New
UB 2012-201 4MY	MT	X	X	39110-2BDL0 39110-2BDN0 39110-2BDR0	GGUB-BNU6ES00600 GGUB-BNU6ES01600 GGUB-BNU6ES02600 GGUB-BNU6ES03600 GGUB-BNU6ES0060A GGUB-BNU6ES016A0 GGUB-DNU6ES00600 GGUB-DNU6ES01600 GGUB-DNU6ES02600 GGUB-DNU6ES03600 GGUB-DNU6ES04600 GGUB-DNU6ES05600 GGUB-DNU6ES06600 GGUB-ENU6ES00600 GGUB-ENU6ES01600 GGUB-ENU6EF01600 GGUB-ENU6EF02600 GGUB-ENU6EF03600 GGUB-ENU6EF04600	GGUB-ENU6EF05600
		X	O	39110-2BDM0 39110-2BDP0 39110-2BDS0	GGUB-BNU6FS00600 GGUB-BNU6FS01600 GGUB-BNU6FS02600 GGUB-BNU6FS03600 GGUB-BNU6FS0060A GGUB-BNU6FS016A0 GGUB-DNU6FS00600 GGUB-DNU6FS01600 GGUB-DNU6FS02600 GGUB-DNU6FS03600 GGUB-DNU6FS04600 GGUB-DNU6FS05600 GGUB-DNU6FS06600 GGUB-ENU6FS00600 GGUB-ENU6FS01600 GGUB-ENU6FF01600 GGUB-ENU6FF02600 GGUB-ENU6FF03600 GGUB-ENU6FF04600	GGUB-ENU6FF05600

## Upgrade Event #308 Rio (UB) Continued

MODEL	TM	ISG	IMMO	ECM P/NO.	ROM ID	
					Previous	New
UB 2012-201 4MY	AT	X	X	39110-2BDL5 39110-2BDA7 39110-2BDR5	GGUB-BNU6PS00C00 GGUB-BNU6PS01C00 GGUB-BNU6PS02C00 GGUB-BNU6PS03C00 GGUB-BNU6PS04C00 GGUB-BNU6PS00C0A GGUB-BNU6PS01CA0 GGUB-DNU6PS00C00 GGUB-DNU6PS01C00 GGUB-DNU6PS02C00 GGUB-DNU6PS03C00 GGUB-DNU6PS04C00 GGUB-DNU6PS05C00 GGUB-DNU6PS06C00 GGUB-ENU6PS00C00 GGUB-ENU6PS01C00 GGUB-ENU6PF01C00 GGUB-ENU6PF02C00 GGUB-ENU6PF03C00 GGUB-ENU6PF04C00	GGUB-ENU6PF05C00
		X	O	39110-2BDM5 39110-2BDB7 39110-2BDS5	GGUB-BNU6QS00C00 GGUB-BNU6QS01C00 GGUB-BNU6QS02C00 GGUB-BNU6QS03C00 GGUB-BNU6QS04C00 GGUB-BNU6QS00C0A GGUB-BNU6QS01CA0 GGUB-DNU6QS00C00 GGUB-DNU6QS01C00 GGUB-DNU6QS02C00 GGUB-DNU6QS03C00 GGUB-DNU6QS04C00 GGUB-DNU6QS05C00 GGUB-DNU6QS06C00 GGUB-ENU6QS00C00 GGUB-ENU6QS01C00 GGUB-ENU6QF01C00 GGUB-ENU6QF02C00 GGUB-ENU6QF03C00 GGUB-ENU6QF04C00	GGUB-ENU6QF05C00

SUBJECT: ECU UPGRADE – DTC P0441 LOGIC IMPROVEMENT (SA280)

## Upgrade Event #308 Rio (UB) Continued

MODEL	TM	ISG	IMMO	ECM P/NO.	ROM ID	
					Previous	New
UB 2012-201 4MY	AT	O	X	39110-2BDL8 39110-2BDC7 39110-2BDR6	GIUB-BNU6PS00C00 GIUB-BNU6PS01C00 GIUB-BNU6PS02C00 GIUB-BNU6PS03C00 GIUB-BNU6PS04C00 GIUB-BNU6PS00C0A GIUB-BNU6PS01CA0 GIUB-BNU6PS02CA0 GIUB-DNU6PS00C00 GIUB-DNU6PS01C00 GIUB-DNU6PS02C00 GIUB-DNU6PS03C00 GIUB-DNU6PS04C00 GIUB-DNU6PS05C00 GIUB-DNU6PS06C00 GIUB-DNU6PS07C00 GIUB-DNU6PS08C00 GIUB-ENU6PS00C00 GIUB-ENU6PS01C00 GIUB-ENU6PF01C00 GIUB-ENU6PF02C00 GIUB-ENU6PF03C00 GIUB-ENU6PF04C00	GIUB-ENU6PF05C00
		O	O	39110-2BDM8 39110-2BDD7 39110-2BDS6	GIUB-BNU6QS00C00 GIUB-BNU6QS01C00 GIUB-BNU6QS02C00 GIUB-BNU6QS03C00 GIUB-BNU6QS04C00 GIUB-BNU6QS00C0A GIUB-BNU6QS01CA0 GIUB-BNU6QS02CA0 GIUB-DNU6QS00C00 GIUB-DNU6QS01C00 GIUB-DNU6QS02C00 GIUB-DNU6QS03C00 GIUB-DNU6QS04C00 GIUB-DNU6QS05C00 GIUB-DNU6QS06C00 GIUB-DNU6QS07C00 GIUB-DNU6QS08C00 GIUB-ENU6QS00C00 GIUB-ENU6QS01C00 GIUB-ENU6QF01C00 GIUB-ENU6QF02C00 GIUB-ENU6QF03C00 GIUB-ENU6QF04C00	GIUB-ENU6QF05C00

## Upgrade Event #308 Rio (UB) Continued

MODEL	TM	ISG	IMMO	ECM P/NO.	ROM ID	
					Previous	New
UB 2012- 2014MY	AT	O	X	39110-2BDE7	GIUB-DNU6PSG0C00 GIUB-DNU6PSG1C00 GIUB-DNU6PSG2C00 GIUB-DNU6PSG3C00 GIUB-DNU6PSG4C00 GIUB-DNU6PSG5C00 GIUB-DNU6PSG6C00 GIUB-DNU6PSG7C00 GIUB-DNU6PSG8C00 GIUB-DNU6PSG9C00 GIUB-DNU6PFG9C00 GIUB-DNU6PFGAC00	GIUB-DNU6PFGBC00
		O	O	39110-2BDF7	GIUB-DNU6QSG0C00 GIUB-DNU6QSG1C00 GIUB-DNU6QSG2C00 GIUB-DNU6QSG3C00 GIUB-DNU6QSG4C00 GIUB-DNU6QSG5C00 GIUB-DNU6QSG6C00 GIUB-DNU6QSG7C00 GIUB-DNU6QSG8C00 GIUB-DNU6QSG9C00 GIUB-DNU6QFG9C00 GIUB-DNU6QFGAC00	GIUB-DNU6QFGBC00
UB 15MY	MT	X	X	39110-2BDT0	GGUB-FNU6ES00600 GGUB-FNU6ES01600 GGUB-FNU6ES02600 GGUB-FNU6EF02600 GGUB-FNU6EF03600 GGUB-FNU6EF04600 GGUB-FNU6EF05600	GGUB-FNU6EF06600
		X	O	39110-2BDT1	GGUB-FNU6FS00600 GGUB-FNU6FS01600 GGUB-FNU6FS02600 GGUB-FNU6FF02600 GGUB-FNU6FF03600 GGUB-FNU6FF04600 GGUB-FNU6FF05600	GGUB-FNU6FF06600
	AT	X	X	39110-2BDT6 39110-2BDT2	GGUB-FNU6PS00C00 GGUB-FNU6PS01C00 GGUB-FNU6PF01C00 GGUB-FNU6PF02C00 GGUB-FNU6PF03C00 GGUB-FNU6PF04C00	GGUB-FNU6PF05C00
		X	O	39110-2BDT7 39110-2BDT3	GGUB-FNU6QS00C00 GGUB-FNU6QS01C00 GGUB-FNU6QF01C00 GGUB-FNU6QF02C00 GGUB-FNU6QF03C00 GGUB-FNU6QF04C00	GGUB-FNU6QF05C00

## SUBJECT: ECU UPGRADE – DTC P0441 LOGIC IMPROVEMENT (SA280)

## Upgrade Event #308 Rio (UB) Continued

MODEL	TM	ISG	IMMO	ECM P/NO.	ROM ID	
					Previous	New
UB 15MY	AT	O	X	39110-2BDT8 39110-2BDT4	GIUB-FNU6PS00C00 GIUB-FNU6PS01C00 GIUB-FNU6PF01C00 GIUB-FNU6PF02C00 GIUB-FNU6PF03C00 GIUB-FNU6PF04C00	GIUB-FNU6PF05C00
		O	O	39110-2BDT9 39110-2BDT5	GIUB-FNU6QS00C00 GIUB-FNU6QS01C00 GIUB-FNU6QF01C00 GIUB-FNU6QF02C00 GIUB-FNU6QF03C00 GIUB-FNU6QF04C00	GIUB-FNU6QF05C00
UB 16MY	MT	X	X	39114-2BVD0	GGUB-GNU6ES00600 GGUB-GNU6ES01600 GGUB-GNU6EF01600	GGUB-GNU6ES03600
		X	O	39114-2BVC0	GGUB-GNU6FS00600 GGUB-GNU6FS01600 GGUB-GNU6FF01600	GGUB-GNU6FS03600
	AT	X	X	39110-2BVF0	GGUB-GNU6PS00C00 GGUB-GNU6PS01C00 GGUB-GNU6PF01C00	GGUB-GNU6PF03C00
		X	O	39110-2BVE0	GGUB-GNU6QS00C00 GGUB-GNU6QS01C00 GGUB-GNU6QF01C00	GGUB-GNU6QF03C00
		O	X	39110-2BVH0	GIUB-GNU6PS00C00 GIUB-GNU6PS01C00 GIUB-GNU6PF01C00	GIUB-GNU6PS03C00
		O	O	39110-2BVG0	GIUB-GNU6QS00C00 GIUB-GNU6QS01C00 GIUB-GNU6QF01C00	GIUB-GNU6QF03C00

## Upgrade Event #309 Soul (PS)

MODEL	TM	ISG	IMMO	ECM P/NO.	ROM ID	
					Previous	New
PS ULEV 14MY	MT	X	O	39110-2BSG0	GGPS-DNU6FS00600 GGPS-DNU6FS01600 GGPS-DNU6FF01600 GGPS-DNU6FF02600	GGPS-DNU6FF03600
		X	X	39110-2BSH0	GGPS-DNU6ES00600 GGPS-DNU6ES01600 GGPS-DNU6EF01600 GGPS-DNU6EF02600	GGPS-DNU6EF03600
	AT	X	O	39110-2BSG5	GGPS-DNU6QS00C00 GGPS-DNU6QS01C00 GGPS-DNU6QF01C00 GGPS-DNU6QF02C00	GGPS-DNU6QF03C00

## Upgrade Event #309 Soul (PS) Continued

MODEL	TM	ISG	IMMO	ECM P/NO.	ROM ID	
					Previous	New
PS ULEV 14MY	AT	X	X	39110-2BSH5	GGPS-DNU6PS00C00 GGPS-DNU6PS01C00 GGPS-DNU6PF01C00 GGPS-DNU6PF02C00	GGPS-DNU6PF03C00
PS ULEV 15MY	MT	X	O	39110-2BSG1	GGPS-FNU6FS00600 GGPS-FNU6FS01600 GGPS-FNU6FS02600 GGPS-FNU6FF02600	GGPS-FNU6FF03600
		O	X	39110-2BSH1	GGPS-FNU6ES00600 GGPS-FNU6ES01600 GGPS-FNU6ES02600 GGPS-FNU6EF02600	GGPS-FNU6EF03600
	AT	O	O	39110-2BSG7	GGPS-FNU6QS00C00 GGPS-FNU6QS01C00 GGPS-FNU6QS02C00 GGPS-FNU6QF02C00	GGPS-FNU6QF03C00
		O	X	39110-2BSH7	GGPS-FNU6PS00C00 GGPS-FNU6PS01C00 GGPS-FNU6PS02C00 GGPS-FNU6PF02C00	GGPS-FNU6PF03C00
PS ULEV 16MY	MT	X	O	39110-2BSF3	GGPS-GNU6FS00600 GGPS-GNU6FS01600	GGPS-GNU6FF01600
		X	X	39110-2BSG3	GGPS-GNU6ES00600 GGPA-GNU6ES01600	GGPA-GNU6EF01600
	AT	X	O	39110-2BSD8	GGPS-GNU6QS00C00 GGPS-GNU6QS01C00	GGPS-GNU6QF01C00
		X	X	39110-2BSE8	GGPS-GNU6PS00C00 GGPS-GNU6PS01C00	GGPS-GNU6PF01C00

## Upgrade Event #310 Soul (AM)

MODEL	TM	ISG	IMMO	ECM P/NO.	ROM ID	
					Previous	New
AM F/L 12~13MY	MT	X	X	39110-2BCG0 39110-2BCJ0	GGAM-BNU6ES00600 GGAM-BNU6ES01600 GGAM-BNU6ES02600 GGAM-BNU6ES03600 GGAM-BNU6ES04600 GGAM-BNU6ES05600 GGAM-BNU6ES06600 GGAM-BNU6ES07600 GGAM-BNU6ES08600 GGAM-DNU6ES00600 GGAM-DNU6ES01600 GGAM-DNU6ES02600 GGAM-DNU6ES03600 GGAM-DNU6ES04600 GGAM-DNU6ES05600 GGAM-DNU6EF05600 GGAM-DNU6EF06600	GGAM-DNU6EF07600



SUBJECT: ECU UPGRADE – DTC P0441 LOGIC IMPROVEMENT (SA280)

Upgrade Event #310 Soul (AM) Continued

MODEL	TM	ISG	IMMO	ECM P/NO.	ROM ID	
					Previous	New
AM F/L 12~13MY	MT	X	O	39110-2BCH0 39110-2BCK0	GGAM-BNU6FS00600 GGAM-BNU6FS01600 GGAM-BNU6FS02600 GGAM-BNU6FS03600 GGAM-BNU6FS04600 GGAM-BNU6FS05600 GGAM-BNU6FS06600 GGAM-BNU6FS07600 GGAM-BNU6FS08600 GGAM-DNU6FS00600 GGAM-DNU6FS01600 GGAM-DNU6FS02600 GGAM-DNU6FS03600 GGAM-DNU6FS04600 GGAM-DNU6FS05600 GGAM-DNU6FF05600 GGAM-DNU6FF06600	GGAM-DNU6FF07600
	AT	X	X	39110-2BCG5 39110-2BCG2 39110-2BCC1	GGAM-BNU6PS00C00 GGAM-BNU6PS01C00 GGAM-BNU6PS02C00 GGAM-BNU6PS03C00 GGAM-BNU6PS04C00 GGAM-BNU6PS05C00 GGAM-BNU6PS06C00 GGAM-BNU6PS07C00 GGAM-BNU6PS08C00 GGAM-DNU6PS00C00 GGAM-DNU6PS01C00 GGAM-DNU6PS02C00 GGAM-DNU6PS03C00 GGAM-DNU6PS04C00 GGAM-DNU6PS05C00 GGAM-DNU6PS06C00 GGAM-DNU6PS07C00 GGAM-DNU6PF07C00 GGAM-DNU6PF08C00	GGAM-DNU6PF09C00

## Upgrade Event #310 Soul (AM) Continued

MODEL	TM	ISG	IMMO	ECM P/NO.	ROM ID	
					Previous	New
AM F/L 12~13MY	AT	X	O	39110-2BCH5 39110-2BCH2 39110-2BCD1	GGAM-BNU6QS00C00 GGAM-BNU6QS01C00 GGAM-BNU6QS02C00 GGAM-BNU6QS03C00 GGAM-BNU6QS04C00 GGAM-BNU6QS05C00 GGAM-BNU6QS06C00 GGAM-BNU6QS07C00 GGAM-BNU6QS08C00 GGAM-DNU6QS00C00 GGAM-DNU6QS01C00 GGAM-DNU6QS02C00 GGAM-DNU6QS03C00 GGAM-DNU6QS04C00 GGAM-DNU6QS05C00 GGAM-DNU6QS06C00 GGAM-DNU6QS07C00 GGAM-DNU6QF07C00 GGAM-DNU6QF08C00	GGAM-DNU6QF09C00
		O	X	39110-2BCG8 39110-2BCG3 39110-2BCE1	GIAM-BNU6PS00C00 GIAM-BNU6PS01C00 GIAM-BNU6PS02C00 GIAM-BNU6PS03C00 GIAM-BNU6PS04C00 GIAM-BNU6PS05C00 GIAM-BNU6PS06C00 GIAM-BNU6PS07C00 GIAM-BNU6PS08C00 GIAM-DNU6PS00C00 GIAM-DNU6PS01C00 GIAM-DNU6PS02C00 GIAM-DNU6PS03C00 GIAM-DNU6PF03C00	GIAM-DNU6PF04C00
		O	O	39110-2BCH8 39110-2BCH3 39110-2BCF1	GIAM-BNU6QS00C00 GIAM-BNU6QS01C00 GIAM-BNU6QS02C00 GIAM-BNU6QS03C00 GIAM-BNU6QS04C00 GIAM-BNU6QS05C00 GIAM-BNU6QS06C00 GIAM-BNU6QS07C00 GIAM-BNU6QS08C00 GIAM-DNU6QS00C00 GIAM-DNU6QS01C00 GIAM-DNU6QS02C00 GIAM-DNU6QS03C00 GIAM-DNU6QF03C00	GIAM-DNU6QF04C00

**To verify the vehicle is affected, be sure to check the Calibration Identification of the vehicle's ECU ROM ID and reference the Information Table as necessary.**

**\* NOTICE**

Refer to TSB SST037 for detailed KDS procedure.

**\* NOTICE**

Prior to performing the ECU upgrade, be sure to check that the KDS is fully charged.

1. Connect the VCI-II to the OBD-II connector, located under the driver's side of the instrument panel.

**\* NOTICE**

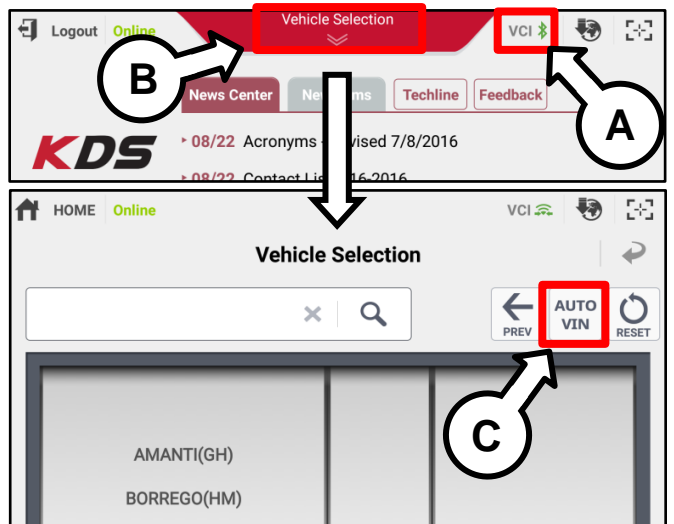
The ECU upgrade function on KDS is operating wirelessly. It is not necessary to perform the upgrade via USB cable.



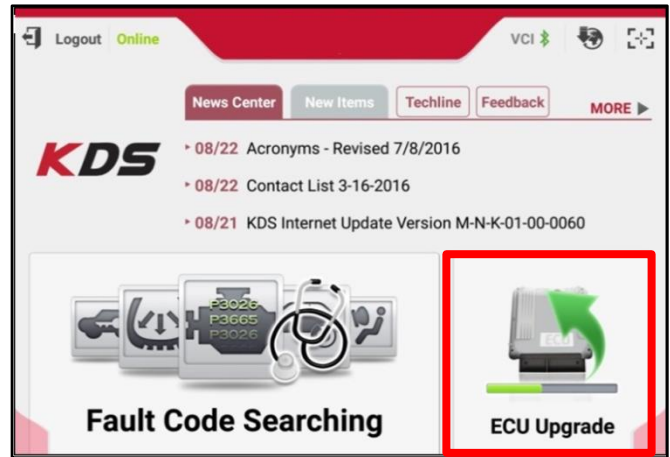
2. With the ignition ON, turn ON the KDS tablet. Select **KDS** from the home screen.



3. Confirm communication with VCI (A) and then configure the vehicle (B) using the **AUTO VIN** (C) feature.

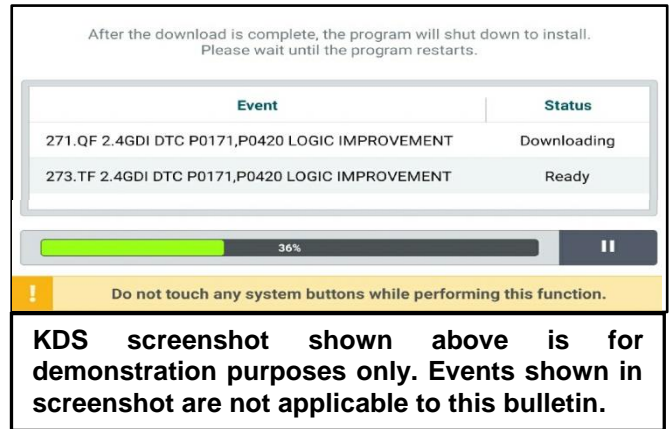


4. Select **ECU Upgrade**.



5. The KDS will check the server for recently uploaded Events and then automatically download the applicable Event (308, 309, or 310).

**\* NOTICE**  
 The vehicle must be identified in Vehicle Selection to download an Event for that vehicle.



KDS screenshot shown above is for demonstration purposes only. Events shown in screenshot are not applicable to this bulletin.

6. Select **Auto Mode**.

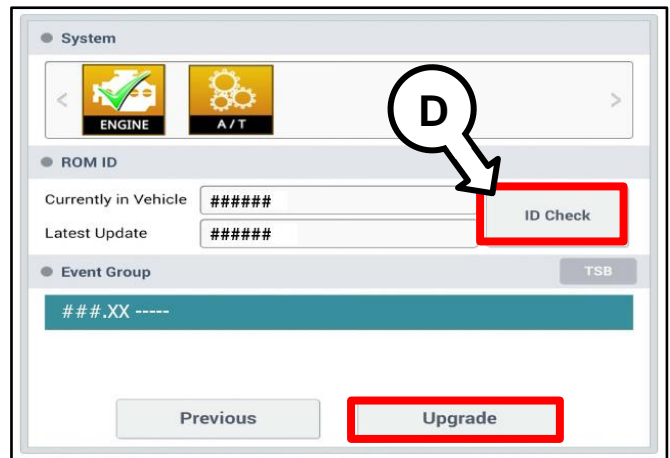
**CAUTION**  
 Do NOT attempt to perform a Manual Mode upgrade UNLESS Auto Mode fails. Always follow the instructions given on the KDS in either Auto or Manual mode.



7. Select the Engine system under the System selection menu.

Touch **ID Check** (D) and confirm that the latest update is available.

Select the appropriate upgrade event (308, 309, or 310) and select **Upgrade** to continue.



SUBJECT:

## ECU UPGRADE – DTC P0441 LOGIC IMPROVEMENT (SA280)

8. The ECU upgrade will begin and the progress of the upgrade will appear on the bar graph. Upgrade part (1/2) (E) will download the upgrade event to the VCI-II. Upgrade part (2/2) (F) will upgrade the ECU.

**CAUTION**

Do not touch the system buttons (like 'Back', 'Home', 'etc.') while performing ECU Upgrade.

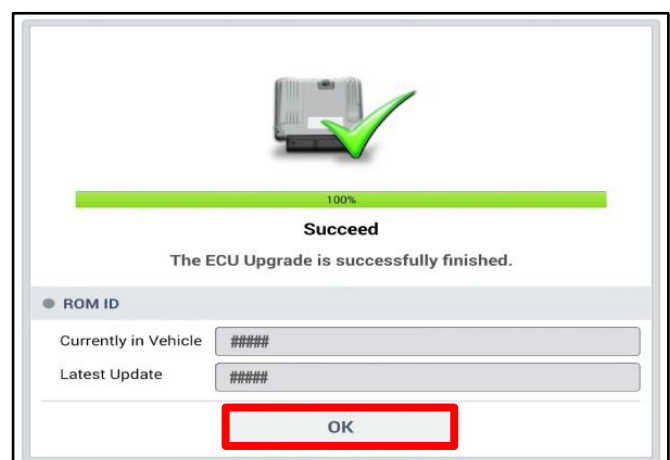
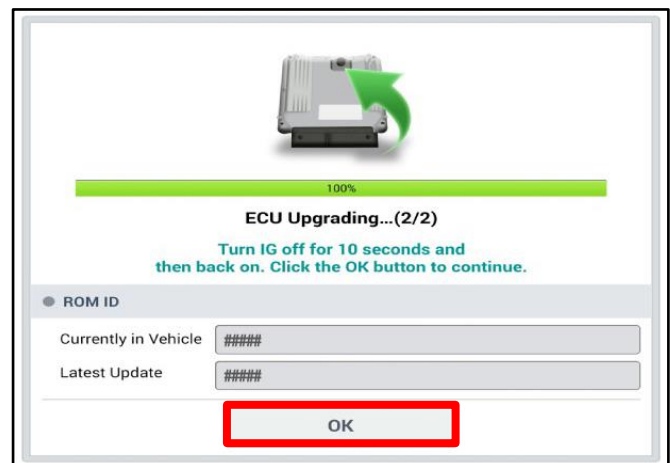
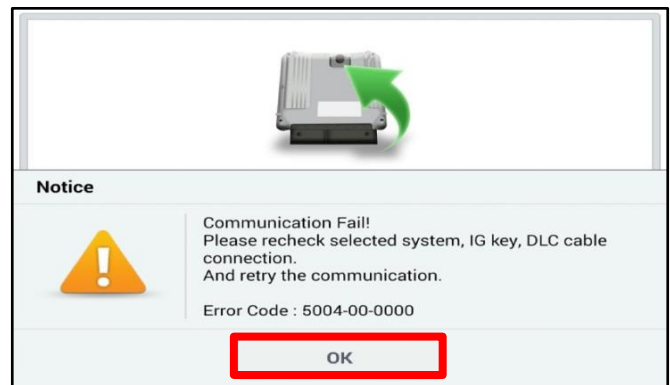
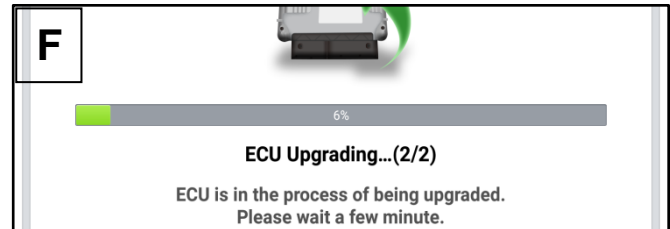
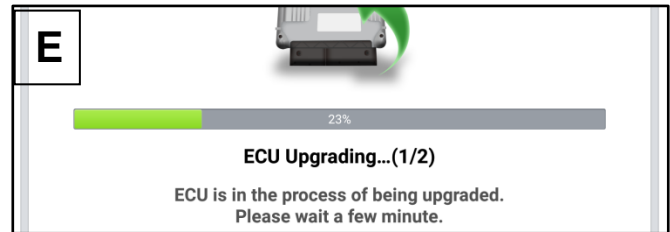
9. If a "Communication Fail" screen appears, verify that the VCI-II and KDS are communicating properly. Touch **OK** and restart the procedure from step 4.

**\* NOTICE**

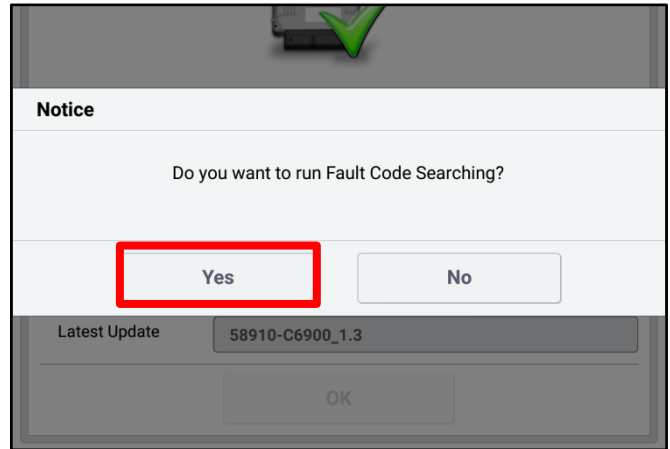
If an error notice continues to appear or if the upgrade cannot be performed, contact Techline or GIT America Help Desk.

10. When instructed on the KDS, turn the ignition **OFF** for ten (10) seconds then back on. Touch **OK** to continue.

11. Once the upgrade is complete, touch **OK** to finalize the procedure.



12. When prompted, select **YES** to check for Diagnostic Trouble Codes (DTC) and erase any DTCs stored such as EPS, ESC, and TPMS that may have been set during the upgrade.



13. Start the engine to confirm proper operation of the vehicle.

### Manual Upgrade Procedure:



#### CAUTION

Before attempting an ECU upgrade on any Kia model, make sure to determine whether the particular model is equipped with an immobilizer security system. Failure to follow proper procedures may cause the ECU to become inoperative after the upgrade and any claims associated with this repair may be subject to chargeback.

#### \* NOTICE

The manual upgrade should **ONLY** be performed if the automatic upgrade fails.

If the automatic upgrade fails, turn the ignition **OFF** for about 10 seconds then place it back in the **ON** position to reset the control unit **BEFORE** performing manual upgrade.

See table below and on page 15 for Manual Mode passwords.

### MANUAL MODE ECU UPGRADE PASWORDS

Menu	Password
UB MT -ISG -IMMO (12MY-14MY) : 39110-2BDL0/N0/R0	2000
UB MT -ISG +IMMO/SMK (12MY-14MY) : 39110-2BDM0/P0/S0	2001
UB AT -ISG -IMMO (12MY-14MY) : 39110-2BDL5/A7/R5	2575
UB AT -ISG +IMMO/SMK (12MY-14MY) : 39110-2BDM5/B7/S5	2576
UB AT +ISG -IMMO (12MY-14MY) : 39110-2BDL8/C7/R6	2876
UB AT +ISG +IMMO/SMK (12MY-14MY) : 39110-2BDM8/D7/S6	2877
UB AT +ISG -IMMO (12MY-14MY) : 39110-2BDE7	1027
UB AT +ISG +IMMO/SMK (12MY-14MY) : 339110-2BDF7	1026
UB MT -ISG -IMMO (15MY) : 39110-2BDT0	1020
UB MT -ISG +IMMO/SMK (15MY) : 39110-2BDT1	1021
UB AT -ISG -IMMO (15MY) : 39110-2BDT6/T2	1022
UB AT -ISG +IMMO/SMK (15MY) : 39110-2BDT7/T3	1023

SUBJECT:

## ECU UPGRADE – DTC P0441 LOGIC IMPROVEMENT (SA280)

**MANUAL MODE ECU UPGRADE PASSWORDS CONTINUED**

Menu	Password
UB AT +ISG -IMMO (15MY) : 39110-2BDT8/T4	1024
UB AT +ISG +IMMO/SMK (15MY) : 39110-2BDT9/T5	1025
UB PE MT -ISG -IMMO (16MY) : 39114-2BVD0	1420
UB PE MT -ISG +IMMO/SMK (16MY) : 39114-2BVC0	1421
UB PE AT -ISG -IMMO (16MY) : 39110-2BVF0	1027
UB PE AT -ISG +IMMO/SMK (16MY) : 39110-2BVE0	1028
UB PE AT +ISG -IMMO (16MY) : 39110-2BVH0	1029
UB PE AT +ISG +IMMO/SMK (16MY) : 39110-2BVG0	1030
PS 1.6GDI 14MY ULEV MT -ISG -IMMO : 39110-2BSH0	1020
PS 1.6GDI 14MY ULEV MT -ISG +IMMO/SMK : 39110-2BSG0	1022
PS 1.6GDI 14MY ULEV AT -ISG -IMMO : 39110-2BSH5	1025
PS 1.6GDI 14MY ULEV AT -ISG +IMMO/SMK : 39110-2BSG5	1024
PS 1.6GDI 15MY ULEV MT -ISG -IMMO : 39110-2BSH1	1021
PS 1.6GDI 15MY ULEV MT -ISG +IMMO/SMK : 39110-2BSG1	1026
PS 1.6GDI 15MY ULEV AT -ISG -IMMO : 39110-2BSH7	1027
PS 1.6GDI 15MY ULEV AT -ISG +IMMO/SMK : 39110-2BSG7	1029
PS 1.6GDI 16MY ULEV MT -ISG -IMMO : 39110-2BSG3	1023
PS 1.6GDI 16MY ULEV MT -ISG +IMMO/SMK : 39110-2BSF3	1030
PS 1.6GDI 16MY ULEV AT -ISG -IMMO : 39110-2BSE8	1028
PS 1.6GDI 16MY ULEV AT -ISG +IMMO/SMK : 39110-2BSD8	1031
AM 1.6GDI MT -ISG -IMMO : 39110-2BCG0/J0	1020
AM 1.6GDI MT -ISG +IMMO/SMK : 39110-2BCH0/K0	1021
AM 1.6GDI AT -ISG -IMMO : 39110-2BCG5/G2/C1	2521
AM 1.6GDI AT -ISG +IMMO/SMK : 39110-2BCH5/H2/CD1	2522
AM 1.6GDI AT +ISG -IMMO : 39110-2BCG8/G3/E1	2831
AM 1.6GDI AT +ISG +IMMO/SMK : 39110-2BCH8/H3/CF1	2832

1. Within the ECU Upgrade screen displayed, select **Manual Mode** and then select the applicable **Upgrade Event (308, 309, or 310)**.
2. Select the appropriate control unit part number with reference to the ROM ID Information Table on pages 3-10, and select **OK**.
3. Enter the appropriate password from the Manual Mode password table above and select **OK**.
4. The upgrade(s) will begin and the progress of the upgrade will appear on the bar graph.
5. When instructed on the KDS, turn the ignition **OFF** for ten (10) seconds then back on. Touch **OK** to continue.
6. Once the upgrade is complete, touch **OK** to finalize the procedure.
7. When prompted, select **YES** to check for Diagnostic Trouble Codes (DTC) and erase any DTCs stored such as EPS, ESC, and TPMS that may have been set during the upgrade.
8. Start the engine to confirm proper operation of the vehicle.



**SUBJECT: ECU UPGRADE – DTC P0441 LOGIC IMPROVEMENT (SA280)****AFFECTED VEHICLE RANGE:**

Model	Production Date Range
Rio (UB)	All 2012 – 2016MY
Soul (AM)	All 2012 – 2013MY
Soul (PS)	All 2014 – 2016MY

**SERVICE ACTION WARRANTY INFORMATION:****N CODE: N99 C CODE: C99**

Claim Type	Model	Causal P/N	Qty.	Repair Description	Labor Op Code	Op Time	Replacement P/N	Qty.
V	Rio (UB)	39110 2BDL0	0	(SA280) Gamma 1.6GDI DTC P0441 Logic Improvement	160136R0	0.3 M/H	N/A	0
	Soul (PS)	39110 2BSH7	0				N/A	0

**\* NOTICE**

**VIN inquiry data for this repair is provided for tracking purposes only. Kia retailers should reference SA280 when accessing the WebDCS system.**

**STANDARD WARRANTY CLAIM INFORMATION:**

Use this information only to file a warranty claim for vehicles for which:

1. A customer complains of the same concern, as described on Page 1.
2. The VIN does not appear on the Affected Vehicles list for Service Action 280.
3. The vehicle model year and production date range are as identified in this bulletin.

**N CODE: N99 C CODE: C99**

Claim Type	Model	Causal P/N	Qty.	Repair Description	Labor Op Code	Op Time	Replacement P/N	Qty.
W	Rio (UB)	39110 2BDL0	0	Gamma 1.6GDI DTC P0441 Logic Improvement	39110FC0	0.3 M/H	N/A	0
	Soul (PS)	39110 2BSH7	0		39110FC1		N/A	0
	Soul (AM)	39110 2BSH7	0		39110FC2		N/A	0