



Date	Group	No.	Release	Page
2.2017	211	001	01	1(2)

Lower Valve Cover Crush Sleeve, Installation
CHU, CXU, GU

FSB 211-001, Lower Valve Cover Crush Sleeve, Installation

(February 2017)

During removal and installation of the two-piece valve cover assembly, pay close attention to ensure the all of the crush sleeve are properly installed in the lower valve cover. The crush sleeves can be pulled from the lower valve cover and fall into the gear train causing serious engine damage. This applies to MACK trucks built after 2014 and equipped with the two-piece valve cover.

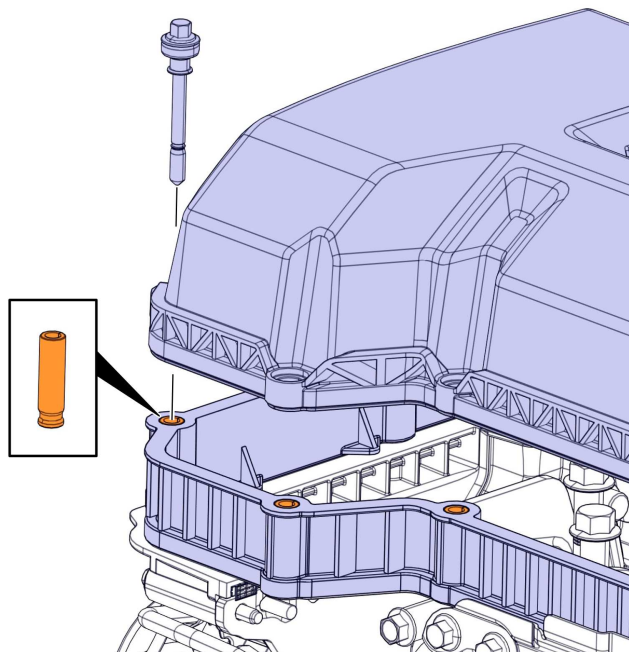
Note: This Bulletin does not apply to MACK Trucks Australia.



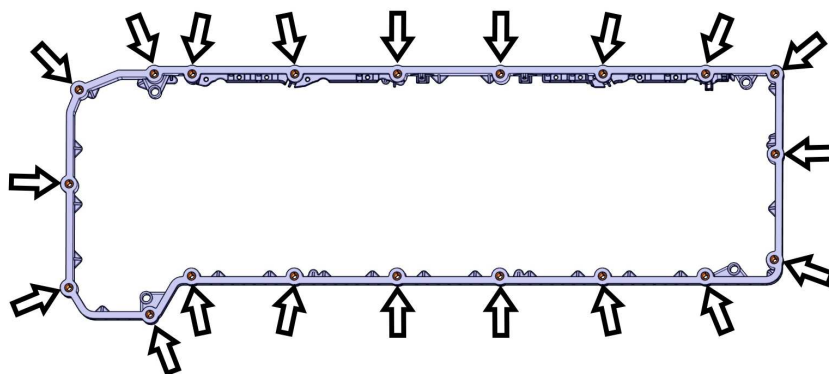
WARNING

The crush sleeves can be pulled from the lower valve cover and fall into the gear train causing serious engine damage.

Note: Before installation of the upper valve cover, always confirm all crush sleeves are in place in the lower valve cover. See Figures below.



W2119351



W2119352