

Second Row Seat Squeak

Service Category Vehicle Interior

Section Seat

Market USA

Toyota Supports
ASE Certification 

Applicability

YEAR(S)	MODEL(S)	ADDITIONAL INFORMATION
2010 – 2015	4Runner	

REVISION NOTICE

June 3, 2015 Rev1:

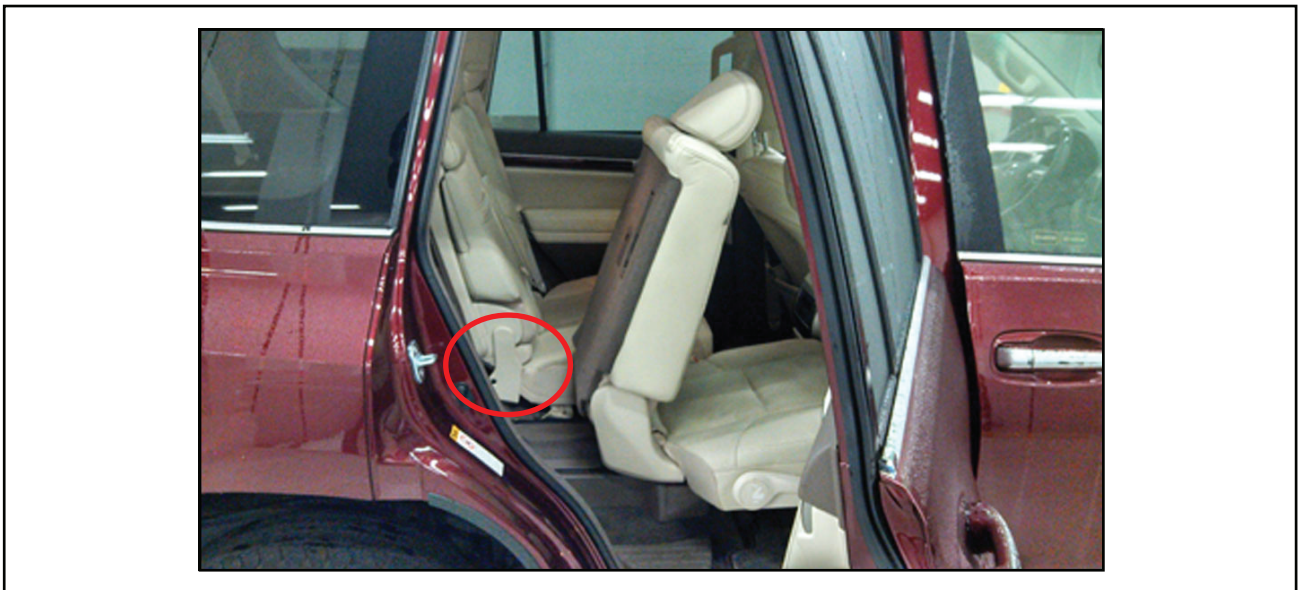
- Applicability has been updated to include 2014 – 2015 model year 4Runner vehicles.
- The entire bulletin has been updated.

Any previous printed versions of this bulletin should be discarded.

Introduction

Some 2010 – 2015 model year 4Runner vehicles may exhibit a squeak noise coming from the second row seats when driving over uneven terrain. The bracket for the inside hinge of the 60% second row seat may rub the seat frame. Follow the procedure outlined below to address this condition.

Figure 1.



Second Row Seat Squeak

Production Change Information

This bulletin applies to vehicles produced **BEFORE** the Production Change Effective VINs shown below.

MODEL	DRIVETRAIN	PRODUCTION CHANGE EFFECTIVE VIN
4Runner	2WD	JTEZU5JR#F5100887
	4WD	JTEBU5JR#F5249734

Warranty Information

OP CODE	DESCRIPTION	TIME	OFF	T1	T2
BD1403	Install Seat Frame Bushing	0.6	72731-60010	91	57

APPLICABLE WARRANTY

- This repair is covered under the Toyota Basic Warranty. This warranty is in effect for 36 months or 36,000 miles, whichever occurs first, from the vehicle's in-service date.
- Warranty application is limited to occurrence of the specified condition described in this bulletin.

Parts Information

PART NUMBER	PART NAME	QTY
72728-60030	Protector, RR Seat Reclining	1

Required Tools & Equipment

SPECIAL SERVICE TOOLS (SST)	PART NUMBER	QTY
Plastic Pry Tool Kit*	00002-06020-01	1

REQUIRED TOOLS & MATERIAL	QUANTITY
T45 TORX® Socket Wrench	1

* Essential SST.

NOTE

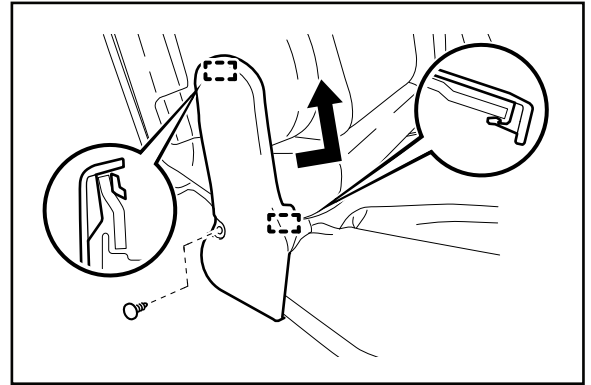
Additional SSTs may be ordered by calling 1-800-933-8335.

Second Row Seat Squeak

Repair Procedure

1. Test drive the vehicle and confirm a noise coming from the 2nd row inner bracket from the 60% seat.
2. Remove the center seat hinge cover.

Figure 2.

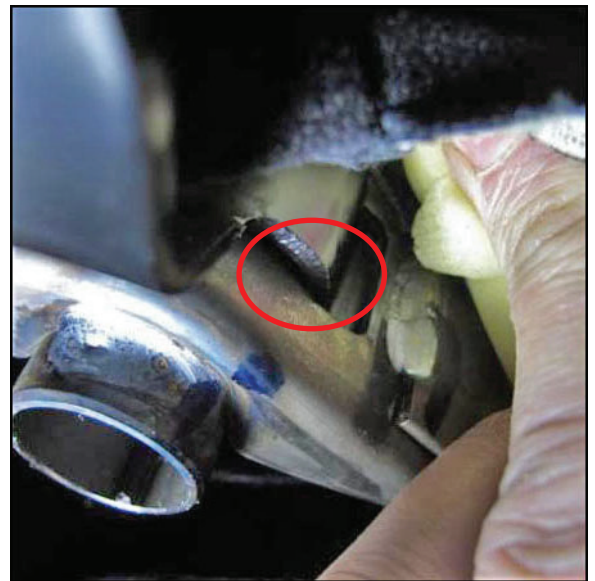


3. Confirm that a noise is being generated by two surfaces rubbing, as shown below.

Figure 3. Approximate Vantage Point (Reposition Foam to Access View)



Figure 4. Up-Close View



4. Remove the 60% second row seat.

Refer to the Technical Information System (TIS), applicable model and model year Repair Manual:

- [2010](#) / [2011](#) / [2012](#) / [2013](#) / [2014](#) / [2015](#) 4Runner:
Vehicle Interior – Seat – “Seat: Rear No. 1 Seat Assembly (for 60/40 Split Slide Walk-in Seat Type LH Side): Removal”

Second Row Seat Squeak

Repair Procedure (Continued)

5. Position the seat as shown to access the Rear Seat Reclining Bracket.

NOTICE

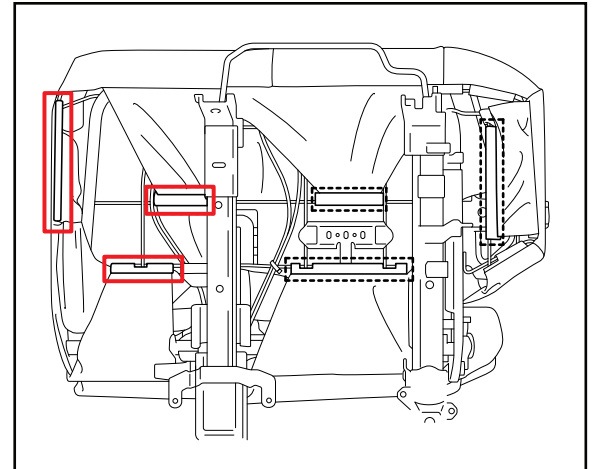
Be sure to protect the seat during service by utilizing a clean/covered work surface.

Figure 5.



6. Partially remove the rear seatback lower cushion cover at the locations shown.

Figure 6.

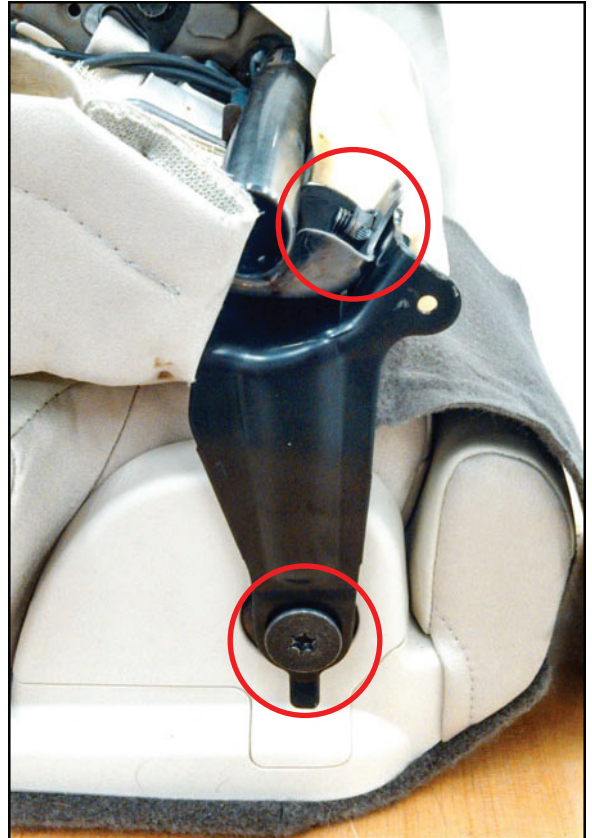


Second Row Seat Squeak

Repair Procedure (Continued)

7. Remove the right Rear Seat Reclining Bracket.
 - A. Using a T45 TORX[®] Socket Wrench, remove the Rear Seat Reclining Bracket with the TORX[®] bolt.
 - B. Remove the 12 mm bracket bolt.

Figure 7.



Second Row Seat Squeak

Repair Procedure (Continued)

8. Install the service part bushing into seat frame as shown.

Figure 8.



1	Rear of Vehicle
----------	-----------------

2	Direction of Bracket Position in Seat Frame
----------	---------------------------------------------

Second Row Seat Squeak

Repair Procedure (Continued)

9. Reassemble the bracket to the 60% second row seat.
 - A. Using a T45 TORX[®] Socket Wrench, install the Rear Seat Reclining Bracket with the TORX[®] bolt.
Torque: 21 N*m (214 kgf*cm, 15 ft*lbf)
 - B. Install the 12 mm bolt.
Torque: 21 N*m (214 kgf*cm, 15 ft*lbf)

HINT

Confirm Seat Bracket is centered in seat frame opening.

Figure 9.



1	Confirm Seat Bracket is Centered in Seat Frame Opening
----------	---------------------------------------------------------------

10. Install the seat into the vehicle.

Refer to TIS, applicable model and model year Repair Manual:

- [2010](#) / [2011](#) / [2012](#) / [2013](#) / [2014](#) / [2015](#) 4Runner:
Vehicle Interior – Seat – “Seat: Rear No. 1 Seat Assembly (for 60/40 Split Slide Walk-in Seat Type LH Side): Installation”

11. Test drive the vehicle to confirm the squeak noise has been corrected.