

Center Roof Drip Molding Loose

Service Category Vehicle Exterior

Section Exterior Panels/Trim

Market USA

Toyota Supports
 ASE Certification 

Applicability

YEAR(S)	MODEL(S)	ADDITIONAL INFORMATION
2013 – 2015	RAV4	Drive Type(s): 4WD, 2WD Engine(s): 2AR Transmission(s): 6AT VDS(s): BF4EV, BFREV, DF4EV, DFREV, RF4EV, RFREV, WF4EV, WFREV, YF4EV, YFREV, ZF4EV, ZFREV

Introduction

Some 2013 – 2015 model year RAV4 vehicles may exhibit a condition where the center roof drip molding on the right hand and/or left hand side of the vehicle becomes loose. An updated molding is available to address this condition.

Production Change Information

This bulletin applies to vehicles produced **BEFORE** the Production Change Effective VINs shown below.

MODEL	PLANT	PRODUCTION CHANGE EFFECTIVE VIN
RAV4	TMMC	2T3ZFREV#FW151976
	Shokki	JTMBFREV#FD112218
	Takaoka	JTMBFREV#FJ019295

Parts Information

PART NUMBER		PART NAME	QTY
PREVIOUS	NEW		
75557-0R030	75557-0R050	Moulding, Roof Drip Side Finish, Center No. 2	1
75557-42050			

NOTE

Part Number 75557-0R050 is to be used on BOTH North America production (NAP) and Japan production (CBU) vehicles.

Center Roof Drip Molding Loose

Warranty Information

OP CODE	DESCRIPTION	TIME	OFP	T1	T2
BD1501	R & R Center No. 2 Roof Drip Side Finish Molding (One Side)	0.6	75557-0R030 75557-42050	62	13
BD1501A	Opposite Side	0.6			

APPLICABLE WARRANTY

- This repair is covered under the Toyota Basic Warranty. This warranty is in effect for 36 months or 36,000 miles, whichever occurs first, from the vehicle's in-service date.
- Warranty application is limited to occurrence of the specified condition described in this bulletin.

Required Tools & Equipment

SPECIAL SERVICE TOOLS (SST)	PART NUMBER	QTY
Plastic Pry Tool Kit*	00002-06020-01	1

* Essential SST.

NOTE

Additional SSTs may be ordered by calling 1-800-933-8335.

Center Roof Drip Molding Loose

Repair Procedure

Removal Procedure for Vehicles Without Roof Rack Assembly

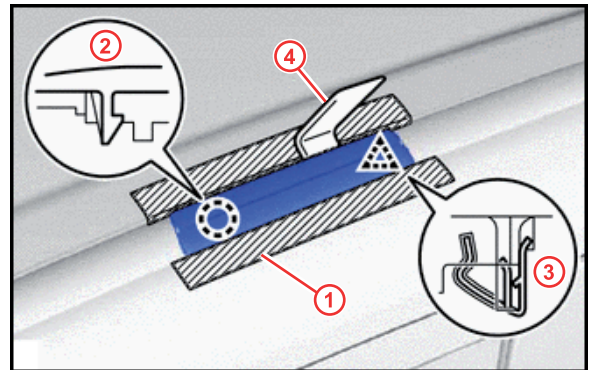
1. Remove the roof drip side finish molding joint cover LH or RH (w/o roof rack assembly).
 - A. Put protective tape around the roof drip side finish molding joint cover.

HINT

Use the same procedure for other affected roof drip side finish molding joint covers.

- B. Using a molding remover, detach the claw and clip, then remove the roof drip side finish molding joint cover.

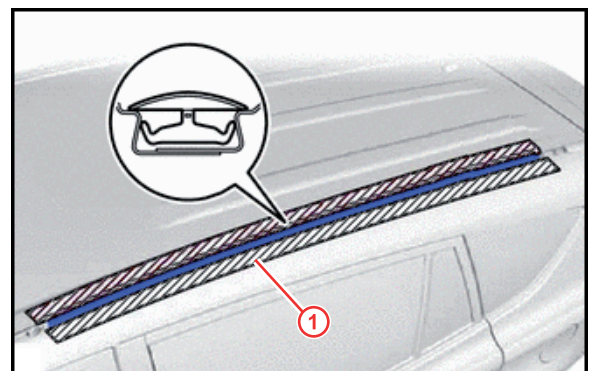
Figure 1.



1	Protective Tape
2	Claw
3	Clip
4	Molding Remover

2. Remove the Center No. 2 Roof Drip Side Finish Molding and prepare for installation of new part.
 - A. Put protective tape around the Center No. 2 Roof Drip Side Finish Molding.

Figure 2.



1	Protective Tape
---	-----------------

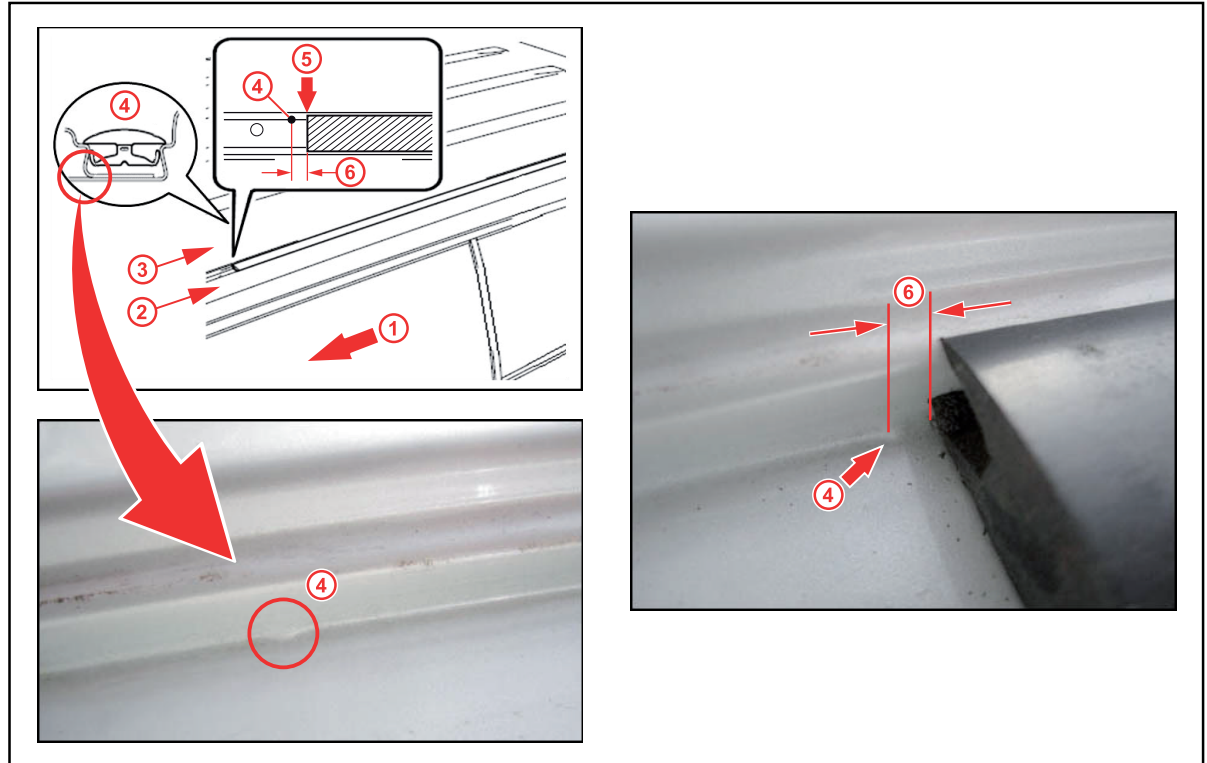
Center Roof Drip Molding Loose

Repair Procedure

Removal Procedure for Vehicles Without Roof Rack Assembly (Continued)

B. Place a matchmark on the roof side of vehicle 3 mm behind the installation point.

Figure 3.



1	Front of Vehicle
2	Panel Side
3	Roof Side

4	Installation Point
5	Matchmark
6	3 mm

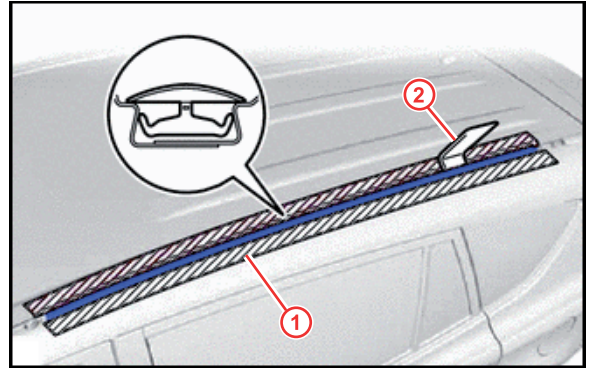
Center Roof Drip Molding Loose

Repair Procedure

Removal Procedure for Vehicles Without Roof Rack Assembly (Continued)

- C. Using a molding remover, remove the Center No. 2 Roof Drip Side Finish Molding.

Figure 4.

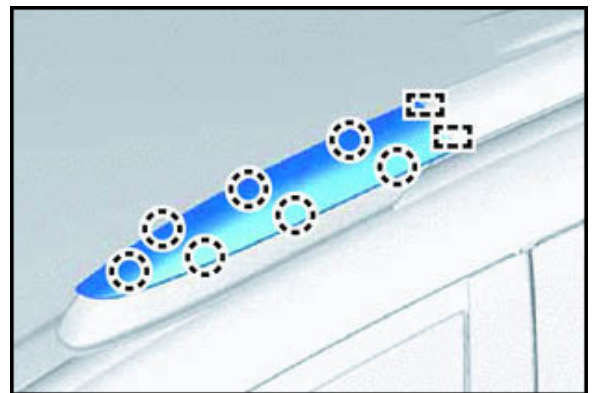


1	Protective Tape
2	Molding Remover

Removal Procedure for Vehicles With Roof Rack Assembly

1. Remove the front roof rack leg cover LH by detaching the 7 claws and 2 guides.

Figure 5.



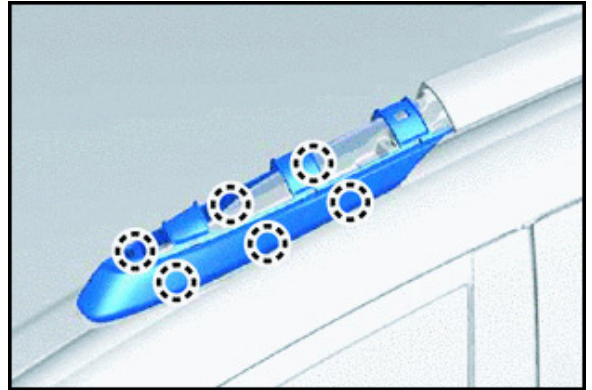
Center Roof Drip Molding Loose

Repair Procedure

Removal Procedure for Vehicles With Roof Rack Assembly (Continued)

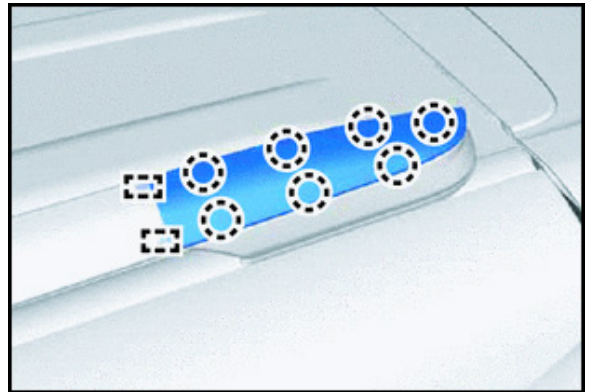
2. Remove the front roof rack lower cover LH by detaching the 6 claws.

Figure 6.



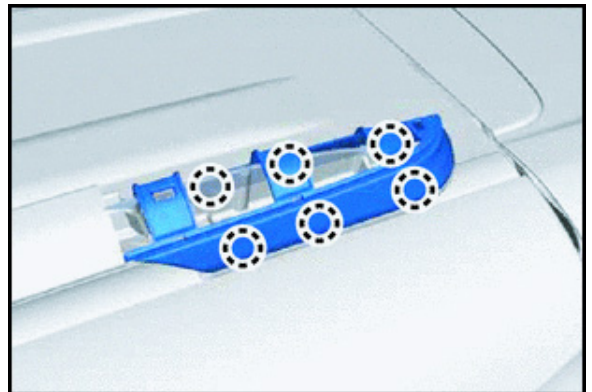
3. Remove the rear roof rack leg cover LH by detaching the 7 claws and 2 guides.

Figure 7.



4. Remove the rear roof rack lower cover LH by detaching the 6 claws.

Figure 8.



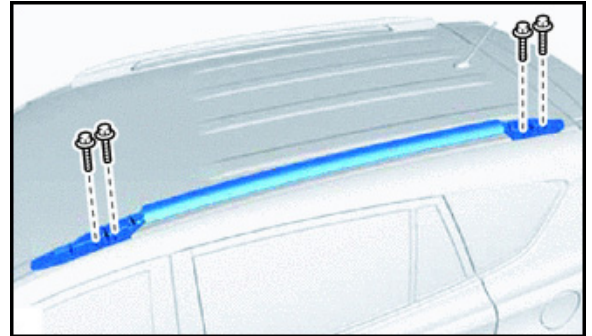
Center Roof Drip Molding Loose

Repair Procedure

Removal Procedure for Vehicles With Roof Rack Assembly (Continued)

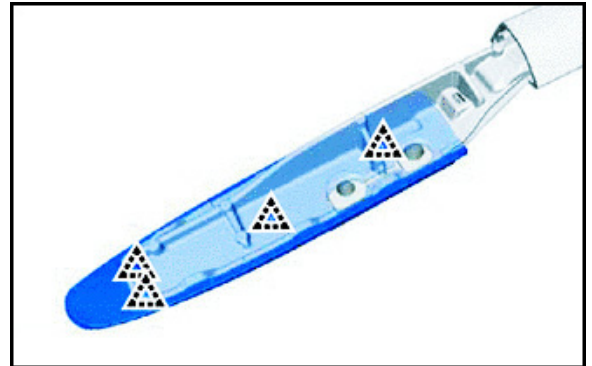
5. Remove the roof rack assembly LH by removing the 4 bolts.

Figure 9.



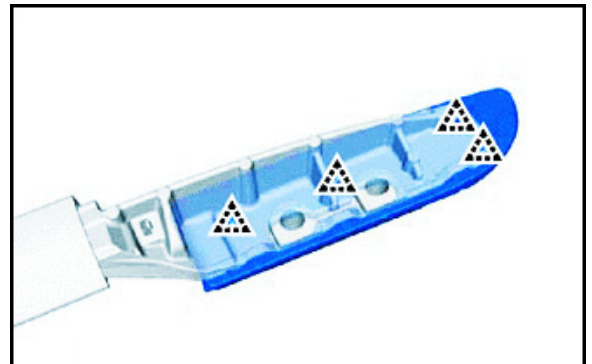
6. Remove the front roof rack leg cushion LH.
 - A. Remove the 4 clips and remove the front roof rack leg cushion LH.
 - B. Remove the two No. 2 roof carrier seals.

Figure 10.



7. Remove the rear roof rack leg cushion LH.
 - A. Detach the 4 clips and remove the rear roof rack leg cushion LH.
 - B. Remove the two No. 2 roof carrier seals.

Figure 11.



Center Roof Drip Molding Loose

Repair Procedure

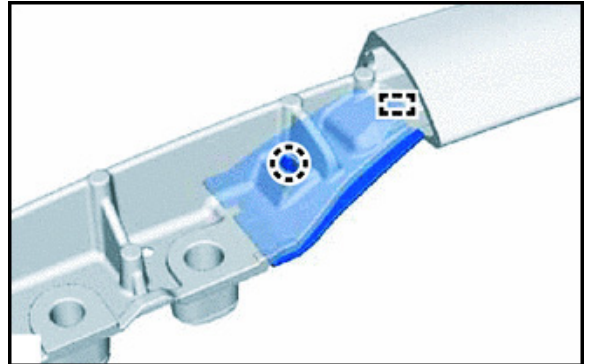
Removal Procedure for Vehicles With Roof Rack Assembly (Continued)

8. Remove the No. 2 roof rack end cover by detaching the claw and guide.

HINT

Use the same procedure to remove all No. 2 roof rack end covers.

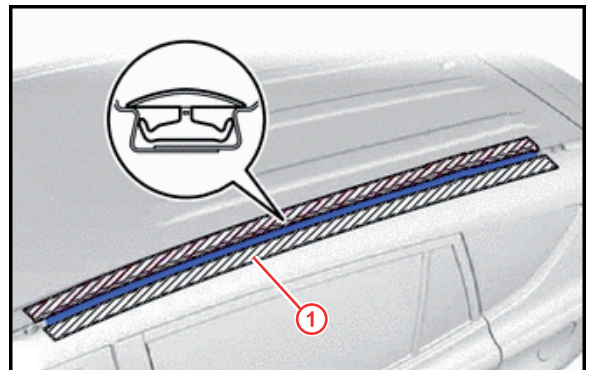
Figure 12.



9. Remove the Center No. 2 Roof Drip Side Finish Molding and prepare for installation of new part.

- A. Put protective tape around the Center No. 2 Roof Drip Side Finish Molding.

Figure 13.



1	Protective Tape
----------	------------------------

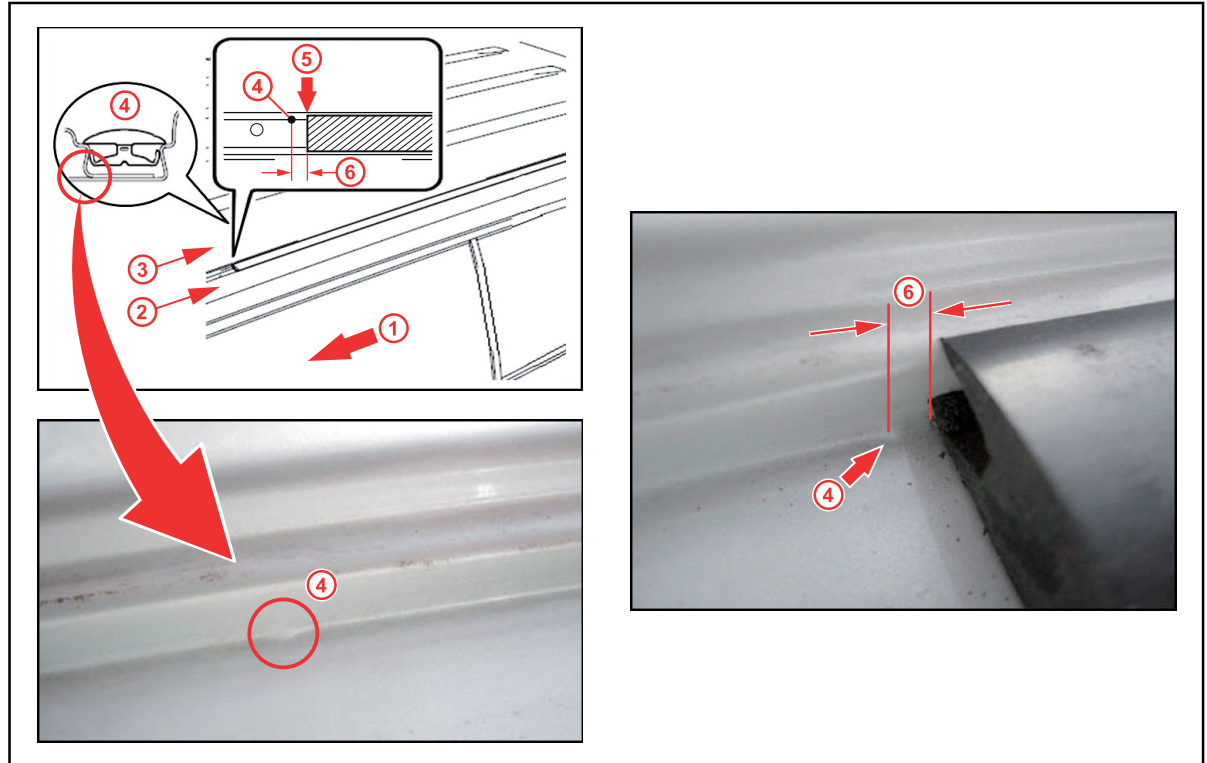
Center Roof Drip Molding Loose

Repair Procedure

Removal Procedure for Vehicles With Roof Rack Assembly (Continued)

B. Place a matchmark on the roof side of vehicle 3 mm behind the installation point.

Figure 14.



1	Front of Vehicle
2	Panel Side
3	Roof Side

4	Installation Point
5	Matchmark
6	3 mm

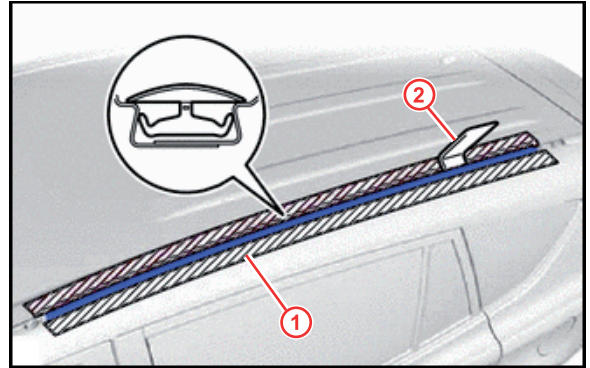
Center Roof Drip Molding Loose

Repair Procedure

Removal Procedure for Vehicles With Roof Rack Assembly (Continued)

- C. Using a molding remover, remove the Center No. 2 Roof Drip Side Finish Molding.

Figure 15.



1	Protective Tape
2	Molding Remover

Installation of New Molding

1. Clean roof channel with cloth.
 - A. Remove any dirt or debris from the entire channel with dampened cloth.
 - B. Remove any residual tape from previous parts.
 - C. Use dry cloth to remove any moisture left from the initial cleaning.

Figure 16. OK Condition

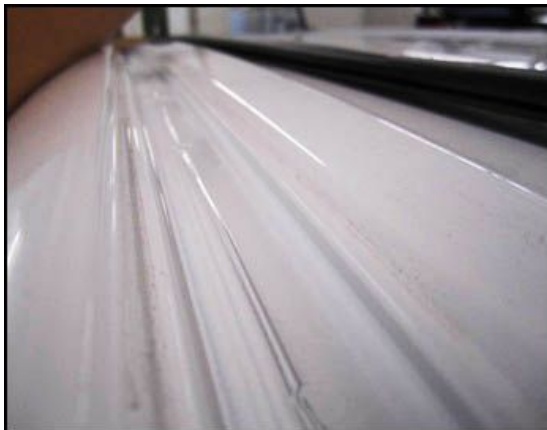
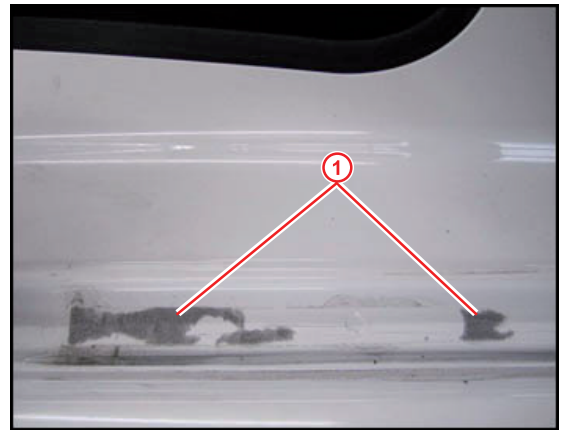


Figure 17. No Good Condition



1	Remove Residual Tape
----------	-----------------------------

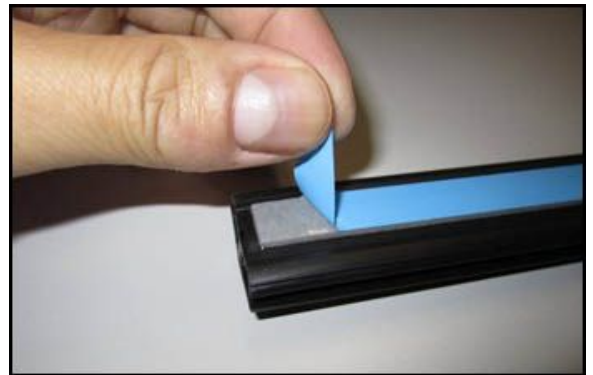
Center Roof Drip Molding Loose

Repair Procedure

Installation of New Molding (Continued)

2. Prepare NEW molding part for installation.
 - A. Remove the release tape from double-sided tape on molding.

Figure 18.



- B. Pick up molding with both hands.

NOTE

Do NOT touch adhesive section with either hand.

Figure 19.



Center Roof Drip Molding Loose

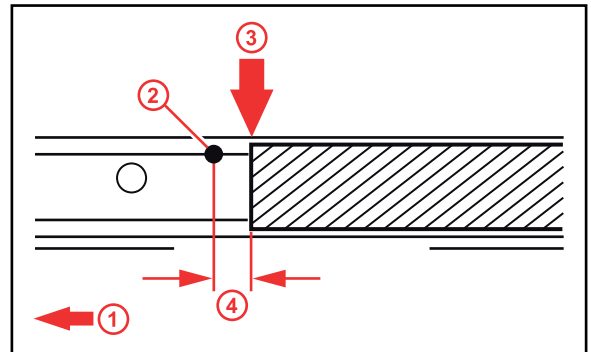
Repair Procedure

Installation of New Molding (Continued)

3. Insert NEW molding into roof channel.

Align and insert front section of new molding at matchmark 3 mm behind installation point.

Figure 20.



1	Front of Vehicle
2	Installation Point
3	Matchmark
4	3 mm

4. While applying consistent pressure, fit new molding into roof channel using the proper installation technique, as shown.

NOTICE
Do NOT bend or twist new molding when fitting into the roof channel.

Figure 21. Proper Installation Technique



Figure 22. Incorrect Installation Technique



1	Do NOT Bend or Twist Molding
----------	------------------------------

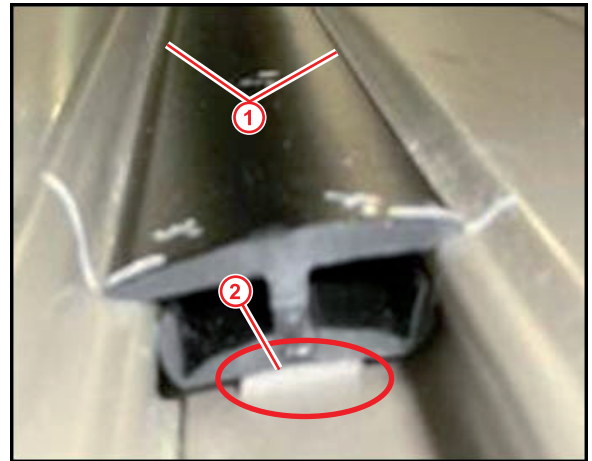
Center Roof Drip Molding Loose

Repair Procedure

Installation of New Molding (Continued)

5. Confirm proper installation of new molding.
 - A. Ensure new molding is flush into the roof channel.
 - B. Confirm there is NO gap between tape and bottom portion of roof channel.

Figure 23. Correct Installation



1	Molding Flush with Roof Channel
2	No Gap Between Tape and Roof Channel

6. Reinstall the roof rack assembly.

Refer to the Technical Information System (TIS), applicable model and model year Repair Manual:

- 2013 – 2015 RAV4:
Vehicle Exterior – Exterior Panels/Trim – “Exterior Panels/Trim: Roof Rack: [Installation](#)”