

# Roof Drip Molding Loose

**Service Category** Vehicle Exterior

**Section** Exterior Panels/Trim

**Market** USA

Toyota Supports  
 ASE Certification 

## Applicability

YEAR(S)	MODEL(S)	ADDITIONAL INFORMATION
2011 – 2014	Tacoma	

## Introduction

Some 2011 – 2014 model year Tacoma vehicles may exhibit a condition where the Roof Side Finish Molding on the right hand and/or left hand side of the vehicle becomes loose. Follow the Repair Procedure in this bulletin to address this condition.

## Production Change Information

This bulletin applies to vehicles produced **BEFORE** the Production Change Effective VINs shown below.

MODEL	PLANT	ENGINE	PRODUCTION CHANGE EFFECTIVE VIN
Tacoma	TMMTX	2TR-FE	5TFJX4CN#EX043933
			5TFJX4GN#EX033422
		1GR-FE	5TFJU4GN#EX060557
			5TFKU4HN#EX005366
			5TFLU4EN#EX102106
			5TFMU4FN#EX025098
	TMMBC	1GR-FE	3TMKU4HN#EM041514
			3TMLU4EN#EM155588
			3TMMU4FN#EM070321
			3TMJU4GN#EM169238

## Roof Drip Molding Loose

### Warranty Information

OP CODE	DESCRIPTION	TIME	OFF	T1	T2
BD1509	R & R Roof Drip Side Finish Molding (One Side)	0.5	75551-04062	62	15
Combo A	Opposite Side	0.5	75552-04062		

#### APPLICABLE WARRANTY

- This repair is covered under the Toyota Basic Warranty. This warranty is in effect for 36 months or 36,000 miles, whichever occurs first, from the vehicle's in-service date.
- Warranty application is limited to occurrence of the specified condition described in this bulletin.

### Parts Information

PART NUMBER		PART NAME	QTY
PREVIOUS	NEW		
75551-04062	75551-04063	Molding, Roof Drip Side Finish, RH	1
75552-04062	75552-04063	Molding, Roof Drip Side Finish, LH	1
75895-04010		Tape, Molding, No. 1	1

### Required Tools & Equipment

SPECIAL SERVICE TOOLS (SST)	PART NUMBER	QTY
Plastic Pry Tool Kit*	<a href="#">00002-06020-01</a>	1

\* Essential SST.

#### NOTE

Additional SSTs may be ordered by calling 1-800-933-8335.

REQUIRED TOOLS & MATERIAL	QTY
Latex Gloves	1 Pair
Tape Measure (Metric Scale Minimum Length 1 m)	1
3M™ Adhesion Promoter 06396**	1
3M™ General Purpose Adhesive Cleaner or Equivalent	1

\*\* Order from local auto parts store.

## Roof Drip Molding Loose

### Repair Procedure

**NOTE**

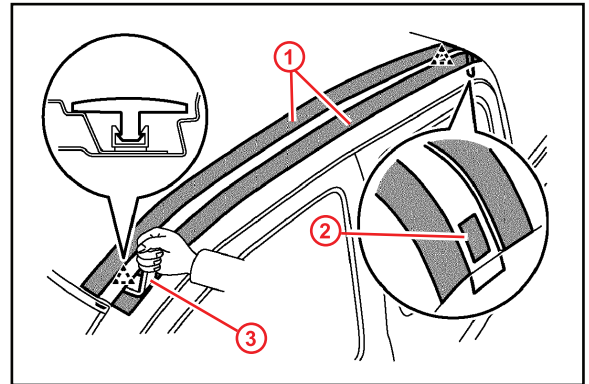
Before starting the repair, order 3M™ Adhesion Promoter 0696 from a local auto parts store.

1. Remove the Roof Drip Side Finish Molding.

Refer to the Technical Information System (TIS), applicable model and model year Repair Manual:

- [2011](#) / [2012](#) / [2013](#) / [2014](#) Tacoma: *Vehicle Exterior – Exterior Panels/Trim – “Exterior: Roof Drip Side Finish Moulding: Removal”*

**Figure 1.**



<b>1</b>	<b>Protective Tape</b>
<b>2</b>	<b>Double-Sided Tape</b>
<b>3</b>	<b>Molding Remover</b>

2. Clean the roof channel with 3M™ General Purpose Adhesive Cleaner or equivalent.

**Figure 2.**

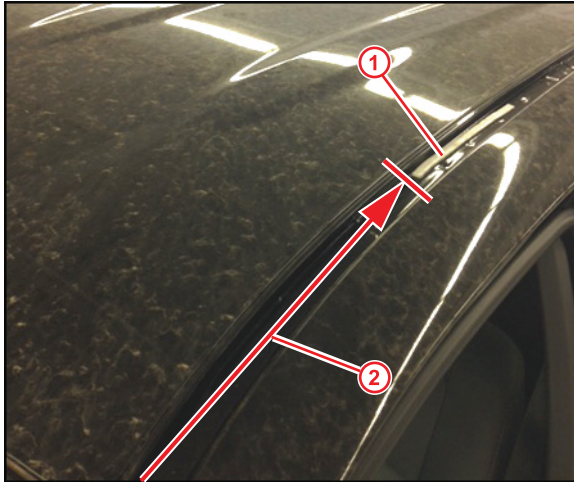


## Roof Drip Molding Loose

### Repair Procedure (Continued)

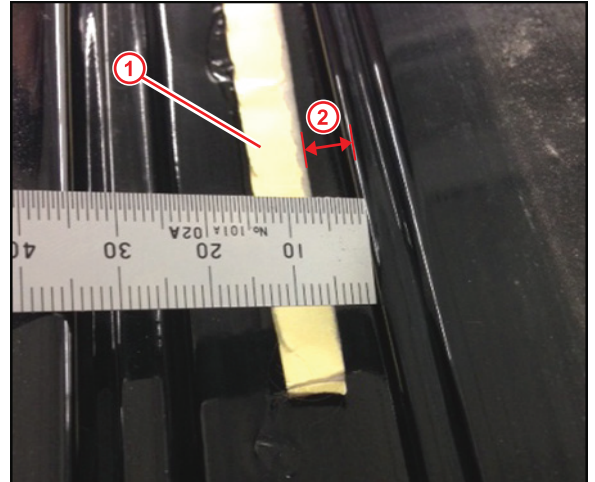
3. Measure 350 mm from the windshield's edge along the roof channel and 4 mm away from the inner channel edge and carefully apply the double-sided tape.

**Figure 3.**



1	Double-Sided Tape
2	350 mm

**Figure 4.**



1	Double-Sided Tape
2	4 mm

4. Use fingers to push down on the double-sided tape to achieve good adhesion.

**Figure 5.**



## Roof Drip Molding Loose

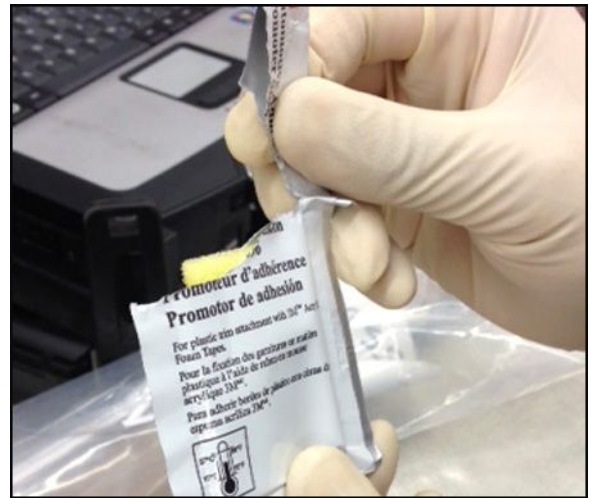
### Repair Procedure (Continued)

- Put on gloves and open the 3M™ Adhesion Promoter package (1 cleaner per package).

Figure 6.

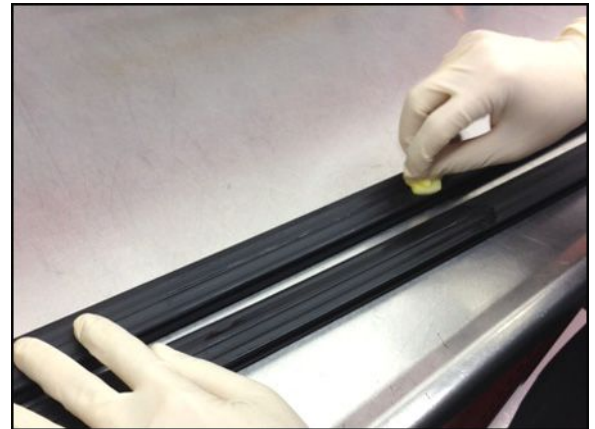


Figure 7.



- Use the 3M™ Adhesion Promoter wipe to clean the length of the Roof Drip Molding underside and wait for a couple of minutes for it to dry.

Figure 8.



- Install the Roof Drip Side Finish Molding. Use roller or fingers to push down in area with double-sided tape.

Refer to TIS, applicable model and model year Repair Manual:

- [2011](#) / [2012](#) / [2013](#) / [2014](#) Tacoma:  
*Vehicle Exterior – Exterior Panels/Trim – “Exterior: Roof Drip Side Finish Moulding: Installation”*

- Use the same procedure for the opposite side.