

Entune Audio Head Unit Software Update (Panasonic)

Service Category Audio/Visual/Telematics

Section Navigation/Multi Info Display

Market USA

Toyota Supports
 ASE Certification 

Applicability

| YEAR(S) | MODEL(S) | ADDITIONAL INFORMATION |
|---------|--|------------------------|
| 2016 | 4Runner, Avalon, Avalon HV, Highlander, Highlander HV, Prius, Prius V, Sequoia, Sienna, Tacoma, Tundra | |

Introduction

Some 2016 model year applicable vehicles equipped with Entune™ Audio (version 01013E) / Entune™ Audio Plus (version 010156 or 01015C) / Entune™ Premium Audio (version 010171 or 010170 or 01017D) may exhibit one or more of the following conditions:

- Head unit rebooting at a specific location.
- Abnormal destination search operation.
- Rebooting caused by no songs on the USB connected iPhone.
- One time reboot after ACC-ON.
- Audio stays muted after the key is cycled.

Updated system software is now available to address these conditions. Follow the Software Update Procedure in this bulletin to install the latest software version.

Entune Audio Head Unit Software Update (Panasonic)

Warranty Information

| OP CODE | DESCRIPTION | MODEL | TIME | OFF | T1 | T2 |
|---------|-----------------|---------------------------|------|-------------|----|----|
| EL1608 | Software Update | 4Runner | 0.3 | 86100-35351 | 87 | 74 |
| | | | | 86100-35361 | | |
| | | | | 86100-35371 | | |
| | | | | 86100-35381 | | |
| | | | | 86100-35391 | | |
| | | | | 86100-35401 | | |
| | | | | 86100-35411 | | |
| | | | | 86100-35421 | | |
| | | | | 86100-35431 | | |
| | | | | 86100-35460 | | |
| | | | | 86100-35470 | | |
| | | | | 86100-35510 | | |
| | | | | 86100-35440 | | |
| | | | | 86100-35450 | | |
| | | 86100-35480 | | | | |
| | | 86100-35490 | | | | |
| | | 86100-35500 | | | | |
| | | 86100-35520 | | | | |
| | | Avalon, Avalon HV | | 86140-07100 | | |
| | | | | 86804-07110 | | |
| | | | | 86804-07120 | | |
| | | | | 86100-07131 | | |
| | | | | 86100-07141 | | |
| | | Highlander, Highlander HV | | 86804-0E270 | | |
| | | | | 86100-0E271 | | |
| | | | | 86804-0E280 | | |
| | | | | 86100-0E281 | | |
| | | Prius | | 86140-47270 | | |
| | | | | 86804-47340 | | |
| | | | | 86804-47330 | | |
| | | | | 86100-47561 | | |
| | | | | 86100-47461 | | |

Entune Audio Head Unit Software Update (Panasonic)

Warranty Information (Continued)

| OP CODE | DESCRIPTION | MODEL | TIME | OFF | T1 | T2 |
|---------|-----------------|---------|------|---|----|----|
| EL1608 | Software Update | Sequoia | 0.3 | 86140-0C150 86140-0C160 86804-0C160 86804-0C170 86804-0C180 86804-0C190 86100-0C220 86100-0C230 86100-0C240 86100-0C250 | 87 | 74 |
| | | Sienna | | 86804-08030 86804-08040 86100-08061 86100-08071 | | |
| | | Tacoma | | 86804-04090 86140-04100 86804-04120 86804-04130 86100-04160 86100-04170 86100-04180 86140-04160 86140-04170 86140-04180 | | |
| | | Tundra | | 86100-0C181 86100-0C191 86100-0C201 86100-0C211 86804-0C120 86804-0C130 86804-0C140 86804-0C150 86140-0C100 86140-0C110 86140-0C120 86140-0C130 86140-0C140 | | |

Entune Audio Head Unit Software Update (Panasonic)

Warranty Information (Continued)

| OP CODE | DESCRIPTION | MODEL | TIME | OFF | T1 | T2 |
|---------|-----------------|---------|------|---|----|----|
| EL1608 | Software Update | Prius V | 0.3 | 86100-47601 86100-47611 86100-47621 86100-47631 86804-47290 86804-47300 86804-47310 86804-47320 86140-47450 | 87 | 74 |

APPLICABLE WARRANTY

- This repair is covered under the Toyota Basic Warranty. This warranty is in effect for 36 months or 36,000 miles, whichever occurs first, from the vehicle's in-service date.
- Warranty application is limited to occurrence of the specified condition described in this bulletin.

Firmware Update Information

| MODEL | HEAD UNIT | FIRMWARE UPDATE FILE |
|---|-----------------------|--|
| | | NEW |
| Avalon, Avalon HV | Entune™ Audio Plus | 13TDDANA-DA11_0094.kwi |
| | Entune™ Premium Audio | 13TDANNA-DA12_0130.kwi |
| Tacoma, Tundra, Prius, Prius V | Entune™ Audio | 13TBDANA-DA10_0068.kwi |
| Tacoma, Tundra, Sequoia | Entune™ Audio Plus | 13TDDANA-DA10_0094.kwi |
| Tundra (South America) | Entune™ Audio Plus | 13TDDANA-DA12_0094.kwi |
| Tacoma, Tundra, Prius, Prius V, Sequoia, Highlander, Highlander HV, 4Runner, Sienna | Entune™ Premium Audio | 13TDANNA-DA11_0130.kwi |

Entune Audio Head Unit Software Update (Panasonic)

Software Update Procedure

1. Confirm the audio system type by checking the Panel ID printed on the bottom-right or bottom-center of the machine.

Figure 1. Avalon, Avalon HV, Highlander, Highlander HV, Prius, Prius V, Sienna, Sequoia, Tacoma & Tundra.



Figure 2. 4Runner

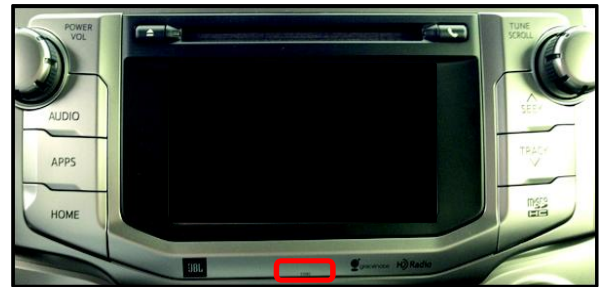


Table 1. Panel ID Information

| MODEL | Entune™ Audio | Entune™ Audio Plus | Entune™ Premium Audio |
|------------------------------|------------------|----------------------------|-----------------------|
| 4Runner | N/A | N/A | 510139 |
| | | | 510140 |
| | | | 510141 |
| | | | 510142 |
| | | | 510143 |
| | | | 510144 |
| | | | 510145 |
| | | | 510146 |
| Highlander, Highlander HV | N/A | N/A | 510147 |
| | | | 510159 |
| Sequoia | N/A | 510151 510152 | 510160 |
| | | | 510153 |
| | | | 510154 |
| | | | 510155 |
| Tacoma | 510100 510101 | 510102 510162 | 510156 |
| | | | 510103 |
| | | | 510161 |
| Tundra | 510113 | 510114 510116 510117 | 510104 |
| | | | 510118 |
| | | | 510119 |
| | | | 510120 |
| Avalon, Avalon HV | N/A | 510129 | 510121 |
| | | | 510130 |
| Sienna | N/A | N/A | 510131 |
| | | | 510157 |
| Prius | 510028 | N/A | 510158 |
| | | | 510053 |
| | | | 510054 |

Entune Audio Head Unit Software Update (Panasonic)

Software Update Procedure (Continued)

Table 1. Panel ID Information (Continued)

| MODEL | Entune™ Audio | Entune™ Audio Plus | Entune™ Premium Audio |
|---------|---------------|--------------------|-----------------------|
| Prius V | 510163 | N/A | 510164 |
| | | | 510165 |
| | | | 510166 |
| | | | 510167 |

2. Start the engine.
3. Go to the *Setup* screen.
 - A. **For Entune™ Audio:** Press the SETUP button on the panel.

Figure 3. Tacoma, Prius, Prius V



Figure 4. Tundra

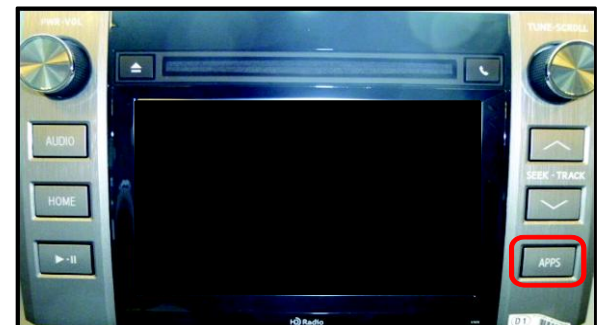


- B. **For Entune™ Audio Plus/Entune™ Premium Audio:** Press the APPS button on the panel.

Figure 5. 4Runner, Avalon, Avalon HV, Highlander, Highlander HV, Prius, Prius V, Sienna, Sequoia, Tacoma & Tundra



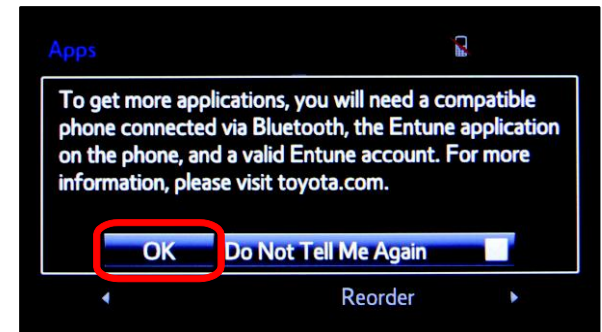
Figure 6. Tundra



NOTE

If Entune™ pop-up displays, select **OK**.

Figure 7.

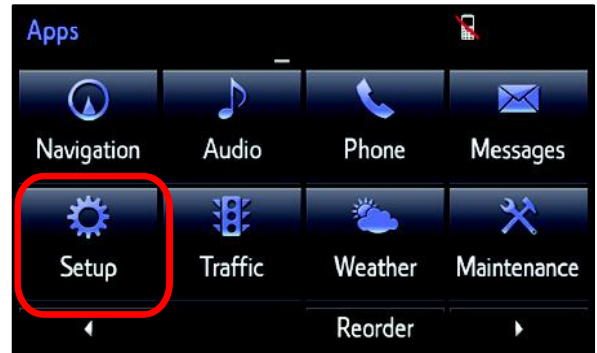


Entune Audio Head Unit Software Update (Panasonic)

Software Update Procedure (Continued)

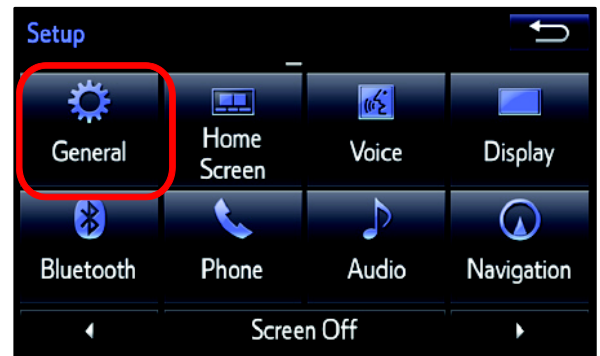
- (1) Select *Setup* on the Apps Screen.

Figure 8.



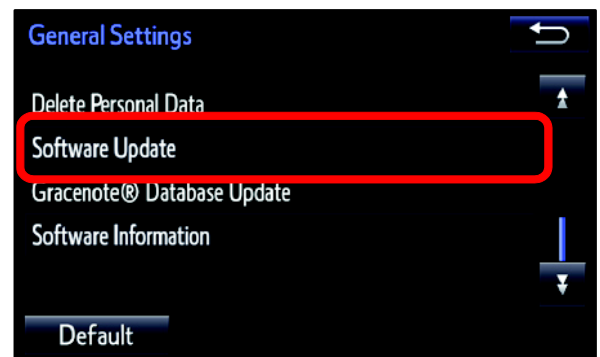
4. Select *General* on the Setup screen.

Figure 9.



5. Select *Software Update* from the list on the *General Settings* screen.

Figure 10.



HINT

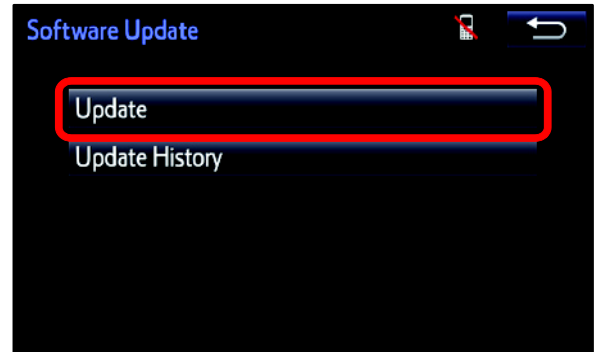
Scroll down the list until **Software Update** is displayed.

Entune Audio Head Unit Software Update (Panasonic)

Software Update Procedure (Continued)

6. Select *Update* on the *Software Update* Screen.

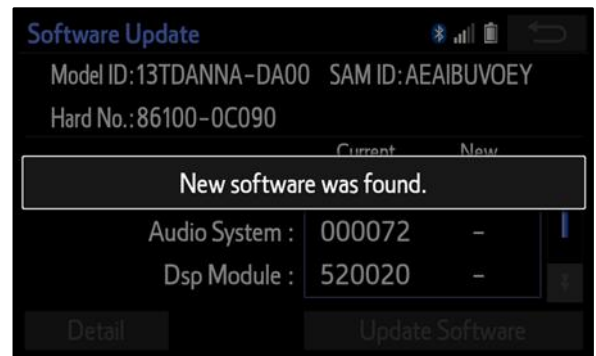
Figure 11.



NOTE

If software has been detected properly, a "New software was found." pop-up will be displayed.

Figure 12.



7. Verify that the new software is up-to-date on the *Software Update* screen.

Figure 13.



Entune Audio Head Unit Software Update (Panasonic)

Software Update Procedure (Continued)

Table 2. Software Version Information

| TYPE | Entune™ Audio | | Entune™ Audio Plus | | Entune™ Premium Audio | |
|--------------|-----------------|-------------|--------------------|-------------|----------------------------|-------------|
| | CURRENT VERSION | NEW VERSION | CURRENT VERSION | NEW VERSION | CURRENT VERSION | NEW VERSION |
| Audio | 01013E | 010144 | 010156 01015C | 01015E | 010170 010171 01017D | 010182 |
| Audio System | 00008E | – | 000093 | – | 000095 | – |
| Dsp Module | 910010 | – | A10010 | – | A10010 | – |
| Sub | 010001 | – | 010001 | – | 010001 | – |
| Can | 130209 | – | 130209 | – | 130209 | – |

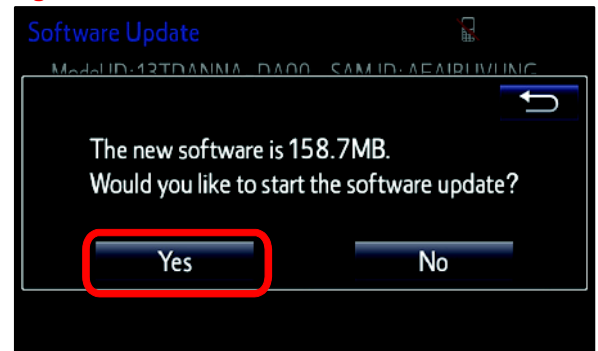
8. Select Update Software on the Software Update screen.

Figure 14.



9. Select Yes on the "Would you like to start the software update?" pop-up.

Figure 15.



Entune Audio Head Unit Software Update (Panasonic)

Software Update Procedure (Continued)

- The unit begins installation. The update will take about 10 minutes.

NOTE

- Do NOT turn off the engine or ACC before the software is ready for updating.
- Do NOT pull the USB Drive SST out of the vehicle USB port.

For Entune™ Premium Audio:

If update fails and the error message “New software is not compatible with the system.” displays, cycle the ignition OFF, remove the Map Micro SD Card from the head unit, and repeat steps 3 – 9.

NOTE

Software update error is more likely to occur in areas with more traffic information.

Once update is complete, reinsert the Map Micro SD card into the head unit, cycle the ignition OFF, and proceed to step 10.

- When “The software is ready for updating.” displays, cycle the ignition OFF.

Figure 16.

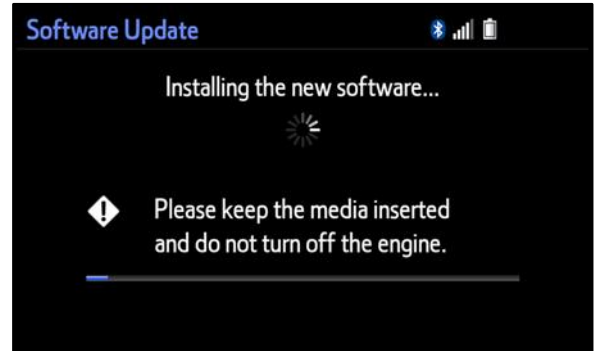
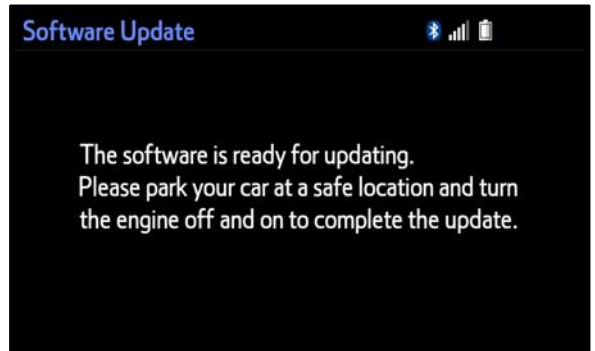


Figure 17.



1 Map Micro SD Card

Figure 18.



Entune Audio Head Unit Software Update (Panasonic)

Software Update Procedure (Continued)

12. Remove the USB Drive SST from the vehicle USB port.

Software Version Confirmation

1. Perform steps 3 – 6 of the Software Update procedure to re-enter the Software Update screen.
2. Verify that the software information is updated on the Software Update screen.

Figure 19.



Table 3. New Software Version Information

| TYPE | Entune™ Audio | | Entune™ Audio Plus | | Entune™ Premium Audio | |
|--------------|-----------------|-------------|--------------------|-------------|-----------------------|-------------|
| | CURRENT VERSION | NEW VERSION | CURRENT VERSION | NEW VERSION | CURRENT VERSION | NEW VERSION |
| Audio | 010144 | – | 01015E | – | 010182 | – |
| Audio System | 00008E | – | 000093 | – | 000095 | – |
| Dsp Module | 910010 | – | A10010 | – | A10010 | – |
| Sub | 010001 | – | 010001 | – | 010001 | – |
| Can | 130209 | – | 130209 | – | 130209 | – |

* Updated version information