



Service Bulletin

PRELIMINARY INFORMATION

Subject: Repeat P0521 And P06DD

Models: 2014-2015 Chevrolet Silverado
2014-2015 GMC Sierra
Built with a 4.3L LV3

The following diagnosis might be helpful if the vehicle exhibits the symptom(s) described in this PI.

Condition/Concern

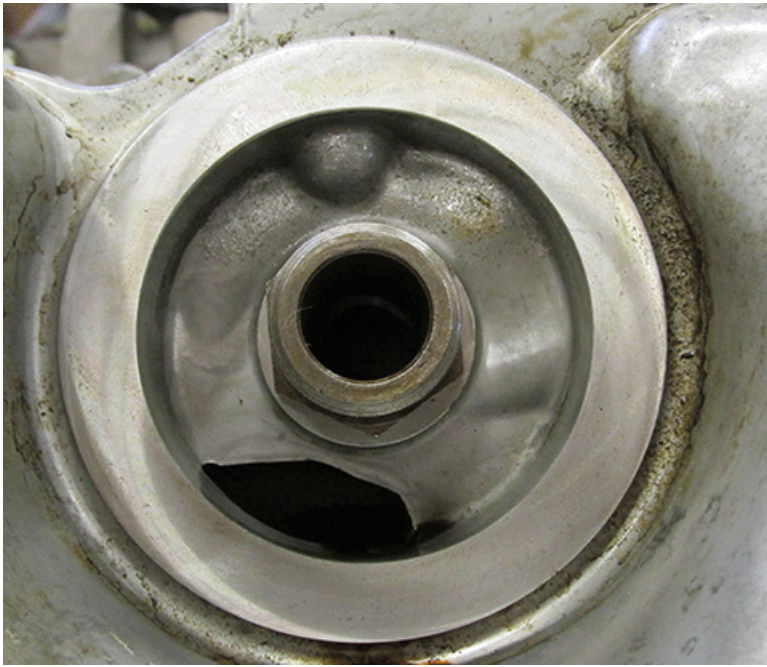
Some customers may comment on a SES with a DTC P0521 and or P06DD with a possible repeat of this concern.

Recommendation/Instructions

If this concern occurs, remove the oil filter and inspect for a cast over passage, (See illustration's below)



This is an oil pan with the cast over passage



This is an oil pan without the cast over passage

If you find a cast over passage concern, the oil pan will need to be replaced.

Warranty Information

For vehicles repaired under warranty use:

Labor Operation	Description	Vehicle	Labor Time
4080938*	Oil Filter Mounting/Oil Pan, Inspection	All	0.3 hr
Add	Oil Pan, Replace	2WD	3.7 hr
		4WD	4.8 hr
* This is an unique labor operation for bulletin use only.			

Please follow this diagnostic or repair process thoroughly and complete each step. If the condition exhibited is resolved without completing every step, the remaining steps do not need to be performed.

GM bulletins are intended for use by professional technicians, NOT a "do-it-yourselfer". They are written to inform these technicians of conditions that may occur on some vehicles, or to provide information that could assist in the proper service of a vehicle. Properly trained technicians have the equipment, tools, safety instructions, and know-how to do a job properly and safely. If a condition is described, DO NOT assume that the bulletin applies to your vehicle, or that your vehicle will have that condition. See your GM dealer for information on whether your vehicle may benefit from the information.



WE SUPPORT VOLUNTARY TECHNICIAN CERTIFICATION