

January 6, 2015

01314 Version 1

## Product Update: Driver's Door Lock Actuator

### AFFECTED VEHICLES

Year	Model	Trim	VIN Range
2007–09	CR-V	ALL	Check the iN VIN status for eligibility

### BACKGROUND

The driver's door lock will not lock or cycles up and down when trying to unlock the door. This product update provides for replacement of the driver's door lock actuator even if it is working properly.

### CUSTOMER NOTIFICATION

Owners of affected vehicles will receive a notification of this campaign.

Do an iN VIN status inquiry to make sure the vehicle is shown as eligible.

Some vehicles affected by this campaign may be in your used vehicle inventory. These vehicles must be repaired before they are sold.

There are two bulletins addressing the 2007–09 CR-V door lock actuators:

- S/B 14-083, *Product Update: Driver's Door Lock Actuator*
- S/B 14-084, *Warranty Extension: Front Passenger and Left and Right Rear Passenger Door Lock Actuator Does Not Work*

Make sure you use the correct bulletin for doing repairs and filing warranty claims.

### CORRECTIVE ACTION

Inspect the door lock actuator and, replace it with a new one.

### PARTS INFORMATION

Part Name	Part Number	Quantity
Driver's Door Lock Actuator Subassembly Kit	06725-SWA-305	1

### WARRANTY CLAIM INFORMATION

Operation Number	Description	Flat Rate Time	Defect Code	Symptom Code	Template ID	Failed Part Number
7485A0	Inspect the door lock actuator.	0.3 hr	5NK00	JE100	14-083A	72150-SWA-A01
7481B9	Inspect and replace the door lock actuator subassembly.	0.5 hr	5NK00	JE100	14-083B	72150-SWA-A01

Skill Level: Repair Technician

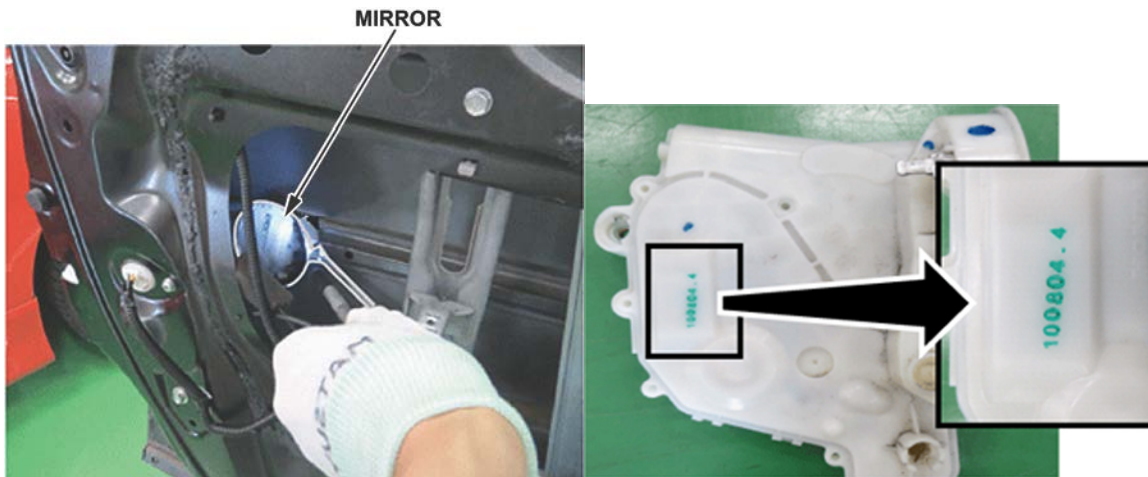
**CUSTOMER INFORMATION:** The information in this bulletin is intended for use only by skilled technicians who have the proper tools, equipment, and training to correctly and safely maintain your vehicle. These procedures should not be attempted by "do-it-yourselfers," and you should not assume this bulletin applies to your vehicle, or that your vehicle has the condition described. To determine whether this information applies, contact an authorized Honda automobile dealer.

## REPAIR PROCEDURE

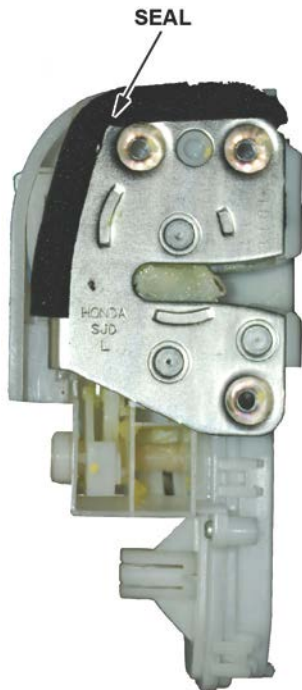
1. Remove the door panel.
2. Remove the plastic cover as needed.
3. Inspect the lot number on the latch assembly using a mirror.

NOTE: The lot number is a production date and line number. The first two digits indicate the year, the third and fourth digits indicate the month, the fifth and sixth digits indicate the date. The number after the decimal is the line number. For example 100804.5 was produced on August 4, 2010 on line 5.

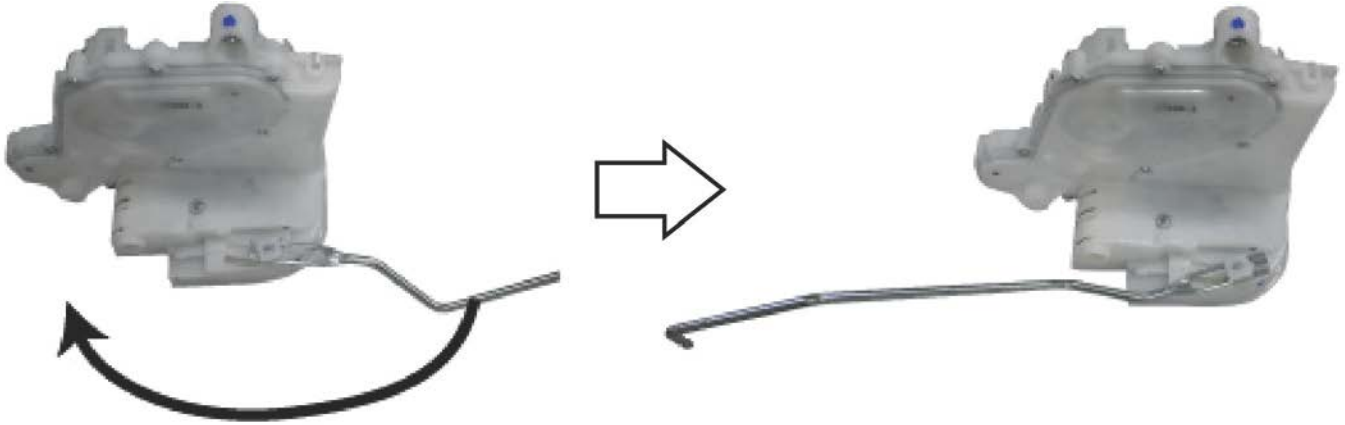
- If the production date is **03/08/2008 or later**, the door lock actuator is OK and is not covered by this product update. Reassemble the door panel in the reverse order of removal.
- If the production date is **before 03/08/2008**, go to step 4.



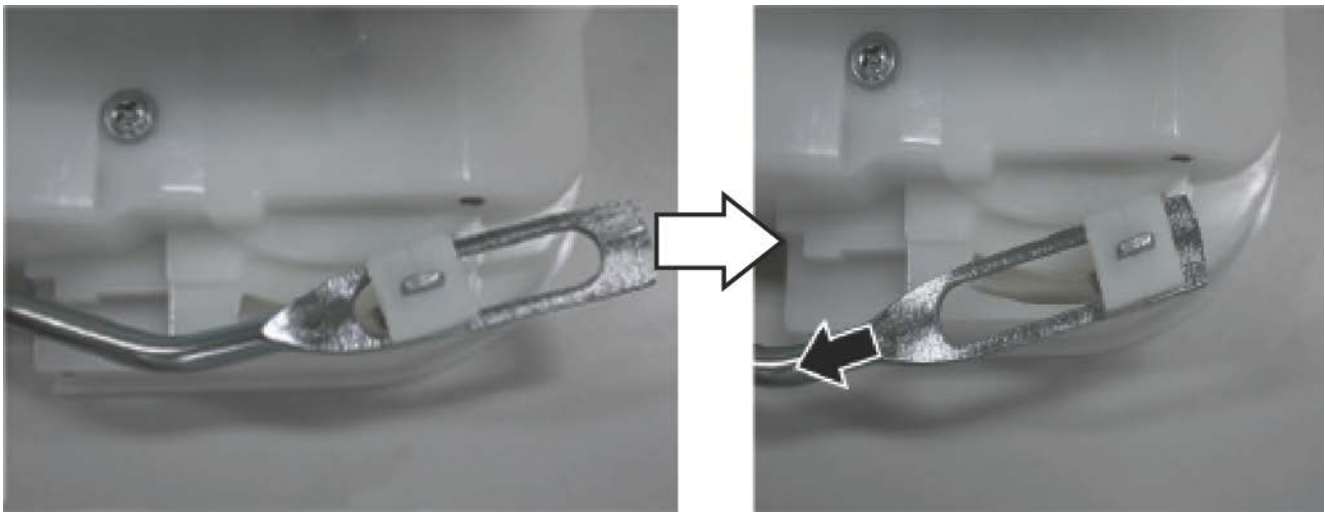
4. Remove the driver's door latch assembly.
5. Remove the seal from the latch assembly.



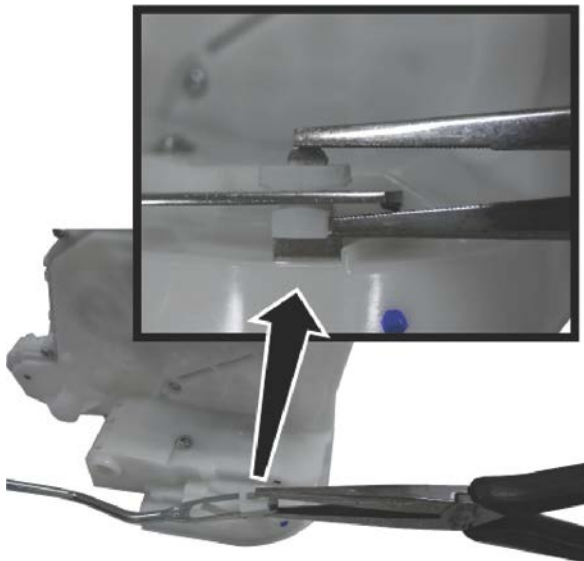
6. Detach the outer handle rod.
- Invert the outer handle rod.



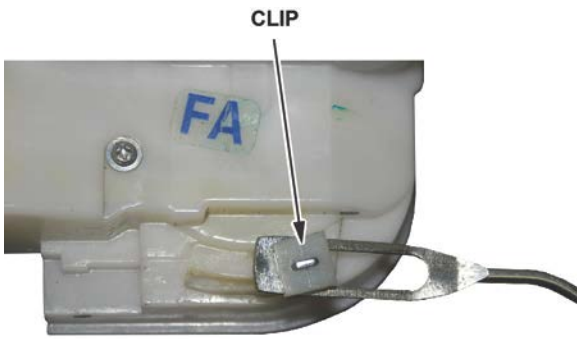
- Move the outer handle rod to the fully extended position as shown.



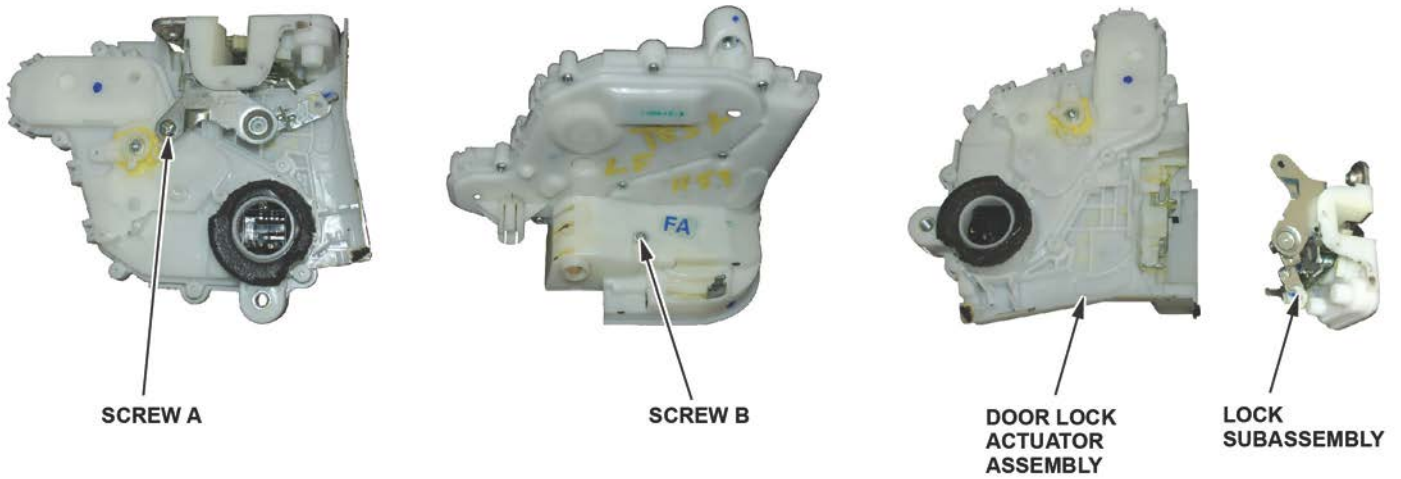
- Using needle-nose pliers, pinch the tip of the lever and the underside of the clip as shown to release it.



- After the clip is released, remove the outer handle rod.

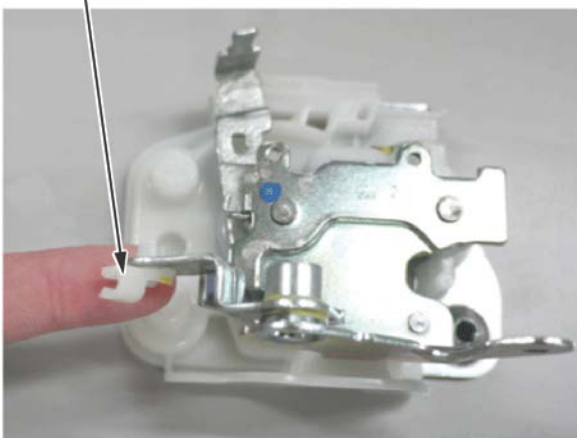


7. Separate the lock subassembly from the door lock actuator assembly by removing the two screws.



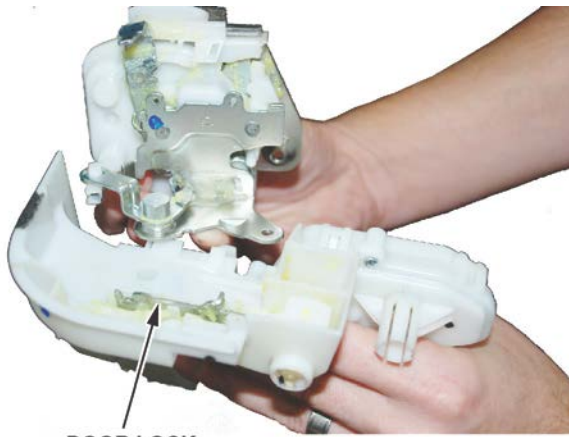
8. Remove the cable fastener and install the new cable fastener from the kit.

CABLE FASTENER



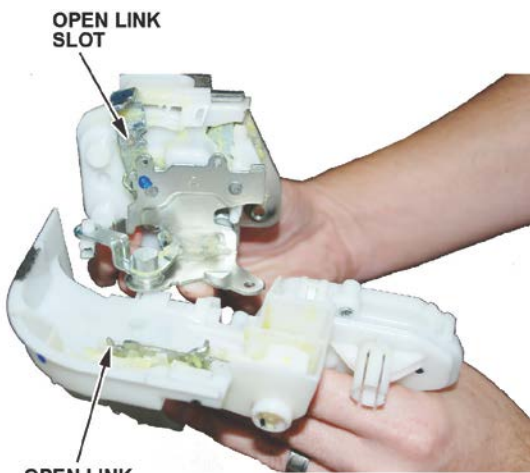
9. Apply the grease included in the kit to the channel that holds the open link.

10. Set the new door lock actuator's open link to its highest position.



**DOOR LOCK  
ACTUATOR  
OPEN LINK**

11. Install the lock subassembly onto the new door lock actuator. Make sure the open link tab fits into the open link slot.



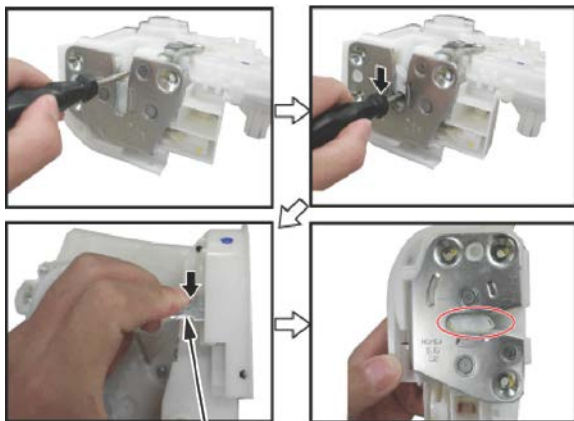
**OPEN LINK  
SLOT**

**OPEN LINK  
TAB**

12. Using a screwdriver, test that the locking mechanism works by locking the latch, then checking if the door latch releases using the outer handle lever.

- If the door latch releases when you operate the outer handle lever, the latch is working properly. Go to step 13.
- If the door latch does not release when you operate the outer handle, separate the lock subassembly from the door lock actuator and repeat steps 10 through 12.

NOTE Make sure the tab is properly set in the slot. If it is not and you install it on the vehicle, you will not be able to open the door.

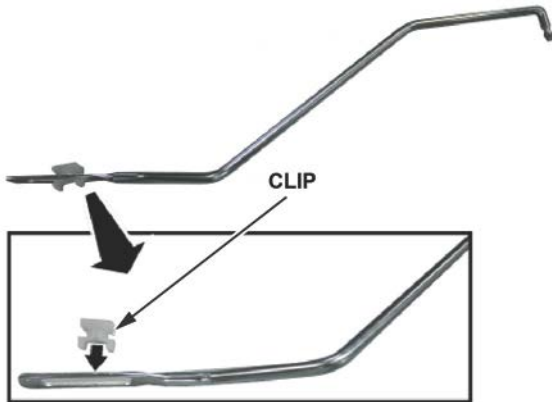


**OUTER HANDLE LEVER**

13. Remove the clip from the outer handle rod and install the new clip included in the kit.

NOTE:

- Apply the grease from the kit to the clip where it contacts the lock sub assembly tab.
- Make sure to install the clip in the correct direction.



14. Install the outer handle rod onto the latch assembly.

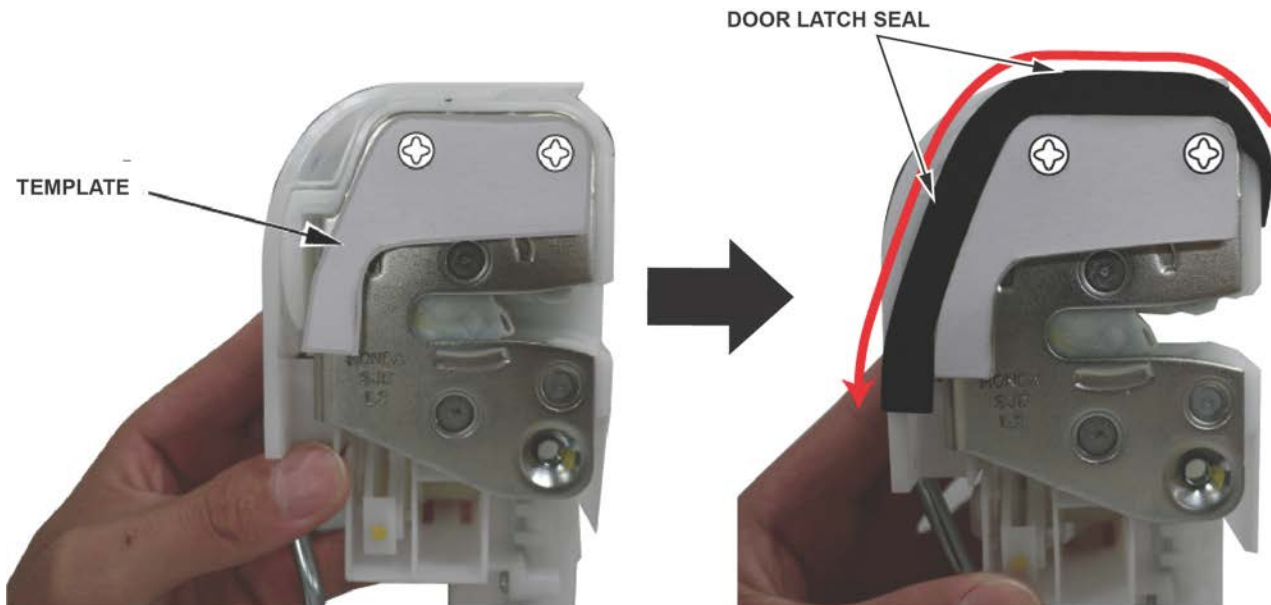
NOTE:

- Make sure the outer handle rod is in the correct position as shown.
- Do not use excessive force to install the rod.



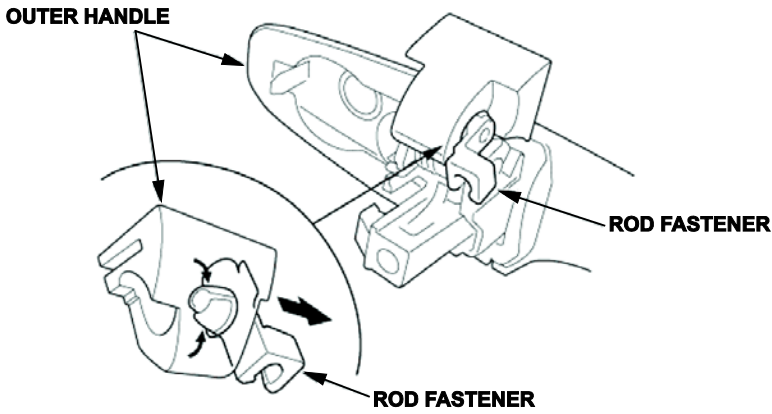
15. Install the door latch seal onto the latch assembly.

- Clean the seal application area as shown with a degreaser and rag.
- Attach the template onto the latch using the screws.



- Install the door latch seal by following the template as shown, then remove the template.

16. Remove the outer handle rod fastener and replace it with the one from the kit.



17. Reinstall the latch in the reverse order of removal.

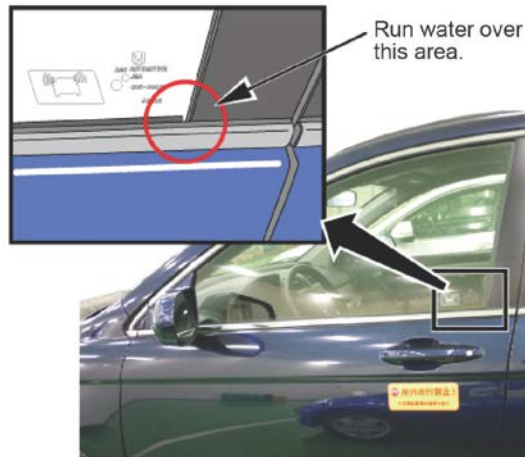
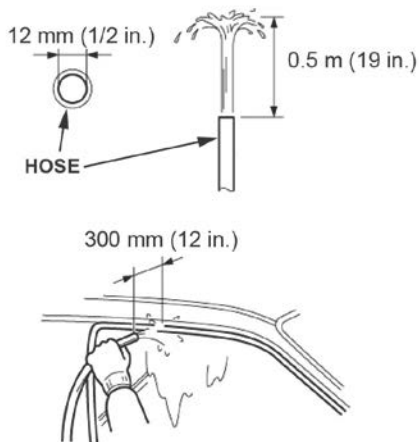
18. Reinstall the door panel in the reverse order of removal.

19. Make sure all of the doors open and close normally by using both the outer and inner handle. Then check that the security system can be armed with all of the doors closed.

20. Check for water leaks by running water over the door glass outer weatherstrip area. After soaking the indicated area, open the door and check for water leaks at the latch. If a water leak is found, check the condition of the latch seal.

**NOTE:**

- Use a 1/2 in. (12 mm) - diameter hose.
- Adjust the water flow as shown.
- Do not use a nozzle.
- Hold the hose about 12 inches (300 mm) away from the door.



Check for water leaks at the door latch.