

This service program replaces program PI0854 dated 10.2014.

Date	Group	No.	Release	Page
2.2015	284	054	03	1(7)

Software Updates
MP7, MP8, MP10 US2014
CHU, CXU, GU, LEU, MRU, TD

PI0854, Control Module Software Updates

(February 2015)

Information

Software updates with enhancements are available for the aftertreatment control module (ACM), engine control module (ECM), vehicle ECU (VECU) and instrument cluster (IC) for MACK MP7, MP8 and MP10 engines with US2014 emission level on vehicles built from January 2, 2014 to September 28, 2014. Software updates address the following.

- Exhaust Temperature Plausibility Faults (P2080 / P2084 / P242B)
- P2463 High Soot Load
- P0402 EGR Mass Flow High
- P0401 EGR Mass Flow Low
- Fuel Pressure Low Fault P008A
- Incorrect Urea Heating Valve, Temperature Targets
- Engine Hours Missing In Instrument Cluster
- P055B Calibration Revisions to Piston Cooling Jet Diagnostic

Note: Control modules are required to be programmed in the following order:

- ACM
- ECM
- VECU
- IC

Required Tools

Premium Tech Tool version 2.03.41 or higher
Vocom Diagnostic Connector 88890304
Communication Interface 88890300

Note: Using other interfaces may affect programming speed.

Note: Check Premium Tech Tool version by clicking on Help tab and then click on "About Tech Tool".

Procedure



DANGER

Do not attempt to repair or service this vehicle without having sufficient training, the correct service literature and the proper tools. Failure to follow this could make the vehicle unsafe and lead to serious personal injury or death.

- 1 Verify service program eligibility by checking service program status in VDA.
- 2 Secure the vehicle for service by parking it on a flat level surface, applying the parking brake, chocking the rear wheels, and placing the transmission in neutral.
- 3 Connect Premium Tech Tool (PTT) to the vehicle diagnostics connector using the 16 pin OBD cable 88890304 and Communication Interface 88890300. Connect the PC to a functional LAN or modem connection and a 120 Volt AC source.
- 4 Turn the ignition switch "ON".
- 5 Log in to PTT and Identify Vehicle is displayed.

- 6 Once the vehicle has been identified, enter the Work Order Number information, then click Start Work.

Work Order Number

Enter a work order number or select a recently used work order number in the list.

Enter work order number:

Select a recently used work order:

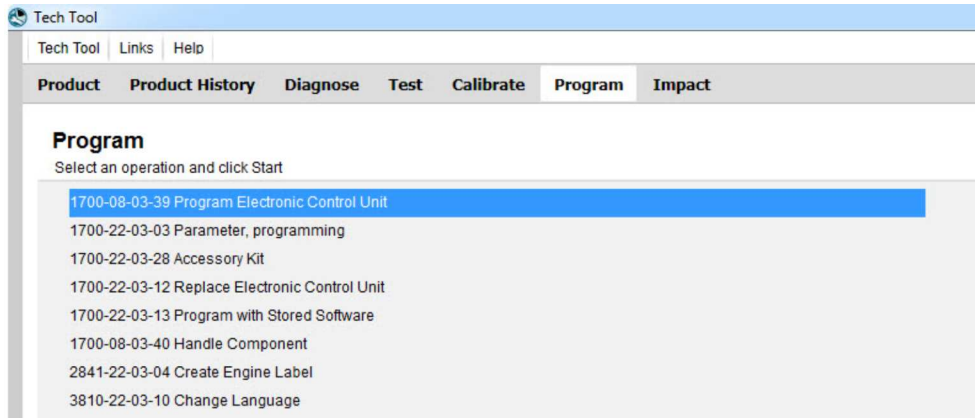
Work Order No	User ID	Date
---------------	---------	------

Enter Notes:

Start Work Cancel

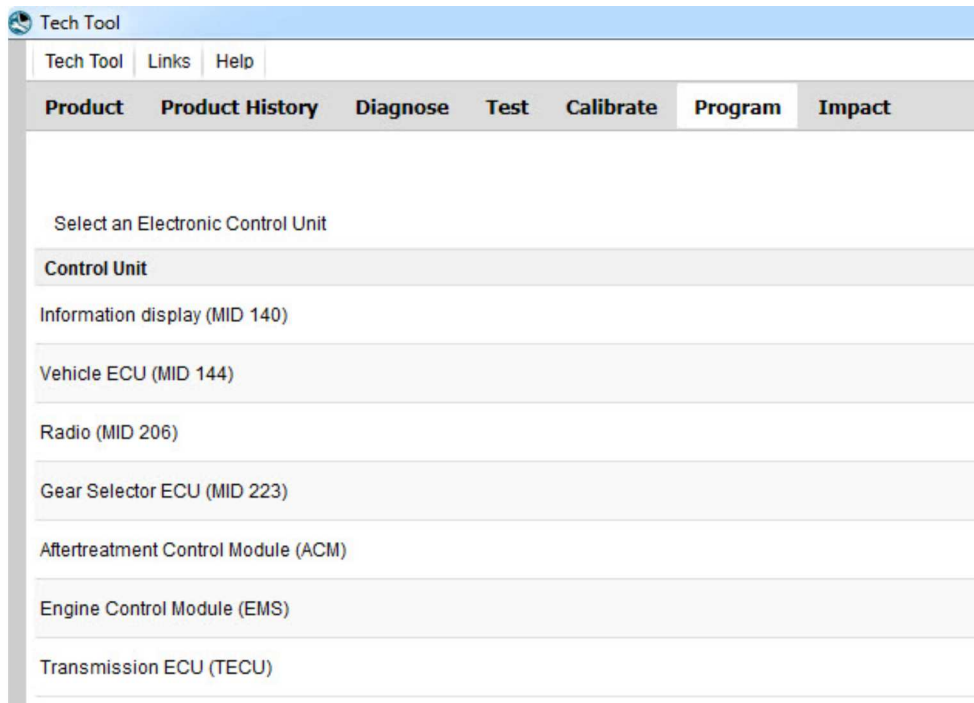
W2079940

- 7 From the Main Menu select Program and **then** Program Electronic Control Unit 1700-08-03-39. Then click Start.



W2079941

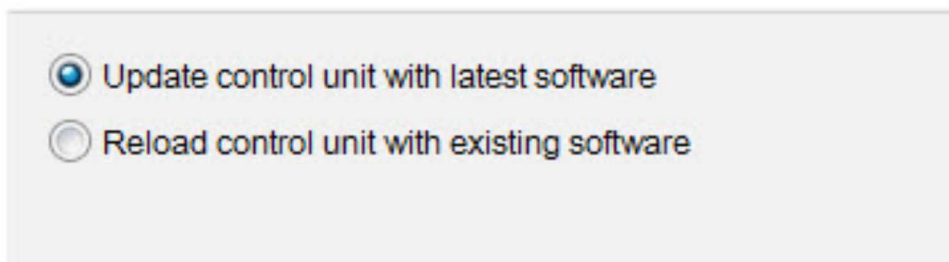
8 Select ACM.



W2079943

9 Select Program to update the ACM with the latest software.

Programming options



W2085461

10 Certain conditions must be met to continue with programming: battery voltage above 10v, parking brake applied, and ignition key in ON position with engine not running. When all conditions have been met, click Continue to proceed with programming.

1700-08-03-39 Program control unit - Update software			
1	> 10 V	12.7 V	
2			
3	= 0 rpm	0 rpm	

Automatically checked conditions

- 1 Battery voltage above 10 V
- 2 Parking brake applied
- 3 Ignition key in ON position. Engine not running

W2080113

11 Select "I accept" to agree to the terms and press continue to proceed.

Note: In the United States and Canada, the programing is NOT chargeable. An invoice will not be generated.

1700-08-03-39 Program control unit - Update software

The following control units will be programmed

Engine Control Module (EMS)

Chargeable programming

The software you are about to program is chargeable. If programming is performed using the software, an invoice will be generated. Programming will be charged once even if multiple retries are needed.

The software has commercial part number

85136079 : Engine Control Module

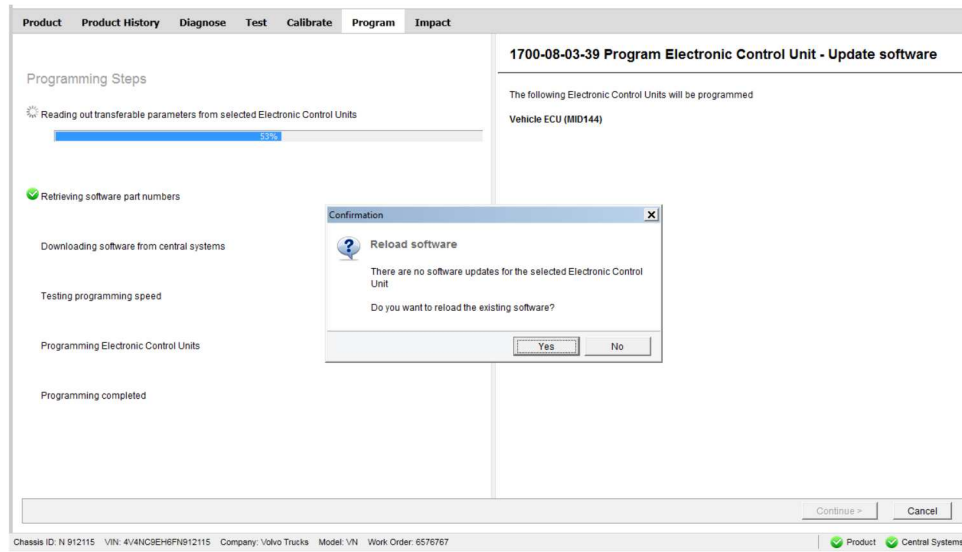
The number can be used for price lookup in your local system and will be specified on the invoice.

I accept

Select I accept to agree to the terms Press Continue to proceed

W2085462

12 If the software is already updated, this screen opens. Select Yes to reload existing software.



W2094387

13 When programming is complete, click Exit to return to Main Menu to program the next control unit.

14 After ACM programming is complete, update the ECM, VECU and IC.

15 When all programming is complete, clear any diagnostic trouble codes (DTC) and Finish Work.

Reimbursement

This repair is covered by an authorized Service Program. Reimbursement is obtained via the normal claim handling process.	UCHP Reimbursement	eWarranty Reimbursement
Claim Type (used only when uploading from the Dealer Bus. Sys.)	41	41
Recall Status		
Vehicle inspected, repair not required		1- Inspected OK
Vehicle repaired per instruction		2- Modified per instruction
Labor Code		
Primary Labor Code	2841-22-09-02 0.9 hrs	2306N-01-96 0.9 hrs.
Time to take charge and determine campaign status	1700-16-01-01 0.3 hrs	101AA-0A-00 0.3 hrs
Causal Part	3092091	3092091
Parts Disposition	N/A	N/A
SCC Code	S6646	N/A
Authorization Number	N/A	PI0854
Expiration Date	31 - May - 2015	31 - May - 2015

Note: Take Charge Time is not included in the Labor Code for this operation. Take charge may be eligible but can only be used once per repair visit. If vehicle is having other warranty repairs performed, take charge should be charged to the warranty repair, otherwise take charge can be charged to this service program.