

Classification:

RS17-008c

Reference:

ITB17-016c

Date:

August 25, 2017

2013 JX35 AND 2014 – 2016 QX60 OCCUPANT CLASSIFICATION SYSTEM RETROFIT

This bulletin has been amended. Pages 15 and 17 have been revised.
No other changes have been made. Please discard all previous versions of this bulletin

APPLIED VEHICLES: 2013 – JX35 (L50)
 2014 – 2016 QX60 (L50)
 2014 – 2016 QX60 Hybrid (L50)

SERVICE INFORMATION

The information in this bulletin is provided for customers who have concerns with their Occupant Classification System (OCS) operation after all campaigns have been completed.

Follow the steps in this bulletin to determine if this OCS retrofit procedure is applicable to the vehicle you are working on.

DETERMINE IF OCS RETROFIT APPLIES

1. Check Service COMM to confirm if OCS reprogramming campaign has been completed (R1606 / ITB16-018).

Completed:

- Write on the repair order the date it was completed and by which dealer.
- Go to step 2.

Not Completed:

- Complete campaign R1606 / ITB16-018.
- No further action needed. OCS retrofit does NOT apply.

Infiniti Bulletins are intended for use by qualified technicians, not 'do-it-yourselfers'. Qualified technicians are properly trained individuals who have the equipment, tools, safety instruction, and know-how to do a job properly and safely. **NOTE:** If you believe that a described condition may apply to a particular vehicle, DO NOT assume that it does. See your Infiniti retailer to determine if this applies to your vehicle.

2. Verify and document the customer's concern (have the customer demonstrate the concern).
3. Using CONSULT-III plus, check for Airbag or OCS related DTCs.

No Airbag or OCS DTCs: go to step 4.

Airbag or OCS DTCs stored:

- Refer to the Electronic Service Manual (ESM), section SRC – SRS Airbag Control System, for diagnostic and repair information.
 - OCS retrofit does NOT apply.
4. If all of the following are confirmed:
 - Campaign R1606 / ITB16-018 has been completed.
 - Customer concern has been confirmed and documented.
 - No Airbag or OCS DTCs are stored.

Then

5. Perform the Service Procedure in this bulletin.

SERVICE PROCEDURE

WARNING: This procedure involves working under the passenger seat. The metal seat frame has sharp edges.

CAUTION: Handle interior trim carefully to avoid damage. Work with clean hands and clean tools to avoid dirt and stains. Use protective covers as needed.

IMPORTANT: Follow all cautions, warnings, and notes in the Electronic Service Manual (ESM) when working on or near a Supplemental Restraint System (SRS), such as an air bag or OCS components.

1. Turn the ignition ON.
2. Write down the radio settings.

| Presets | 1 | 2 | 3 | 4 | 5 | 6 |
|---------|--------|---|---------|---|------|---------------|
| AM | | | | | | |
| FM 1 | | | | | | |
| FM 2 | | | | | | |
| SAT 1 | | | | | | |
| SAT 2 | | | | | | |
| SAT 3 | | | | | | |
| Bass | Treble | | Balance | | Fade | Spd Sen. Vol. |

3. Record (write down) any other customer settings that will be lost when the battery is disconnected.
 - Refer to the Electronic Service Manual (ESM) section PG-Power Supply, Ground, & Circuit Elements, for a listing of systems that may lose settings or memory when disconnecting the 12V battery.
 - Look in the PG section index for ADDITIONAL SERVICE WHEN REMOVING BATTERY NEGATIVE TERMINAL.
 - This list often includes items such as audio, HVAC, power windows, clock, etc.

4. Turn the ignition OFF.

5. Remove the front passenger seat from the vehicle.

- Refer to the ESM, section SE-Seat, for seat removal information.
- The power seat may need forward/backward movement to access the mounting bolts. Follow the ESM for battery connection/disconnection.
- Each time the battery is disconnected, wait at least 3 minutes before continuing.

6. Set the seat in a clean working area.

7. Disconnect the seatbelt buckle electrical connector.

8. Remove the seatbelt buckle.

- Buckle is held on with one mounting bolt.

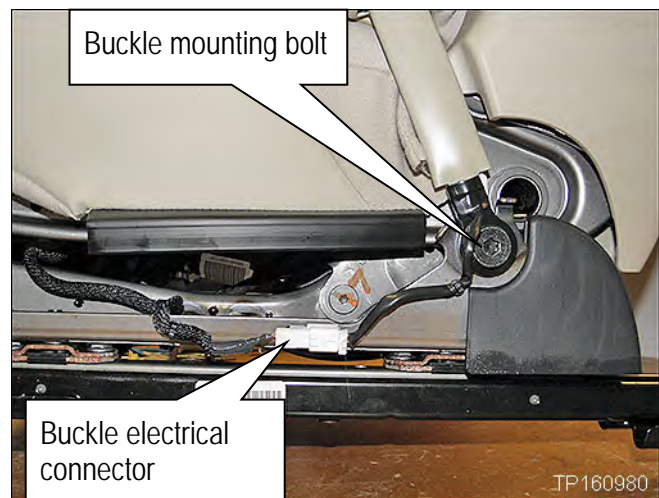


Figure 1

9. Install the new seatbelt buckle (see Figure 2).
- Torque the mounting bolt to: 49 N·m (5.0 kg-m, 36 ft-lb)
 - Connect the short harness branch connector to the existing harness.
 - Route and attach the new (long) harness branch as shown in Figure 2.

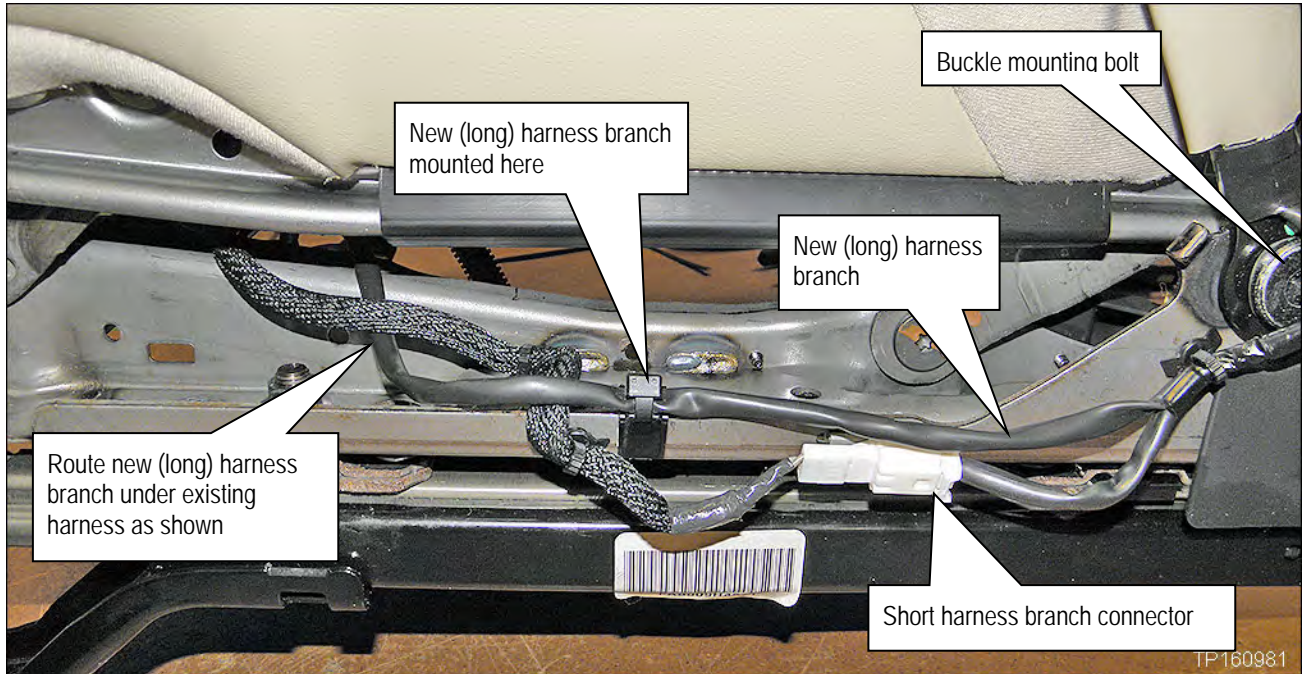


Figure 2

10. From under the seat, mount the connector of the new (long) harness branch to the seat frame as shown in Figure 3 and 4 (use the hole and slot shown).

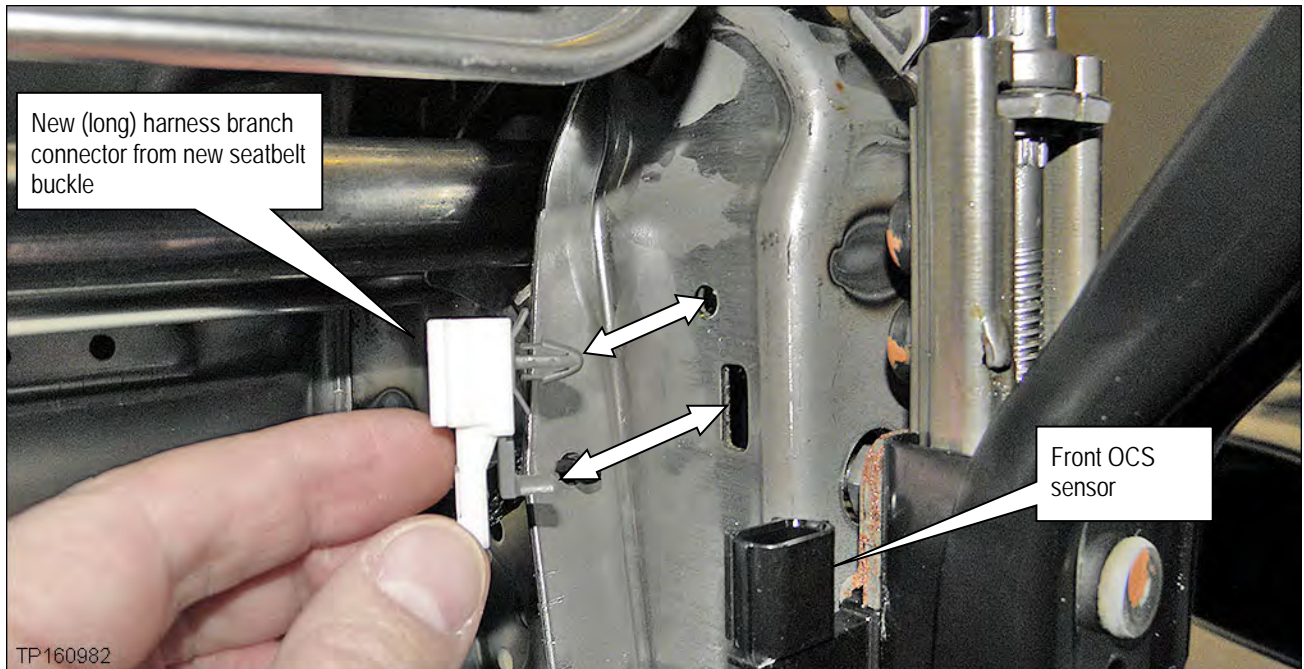


Figure 3

- Attach the new (long) harness branch as shown in Figure 4.

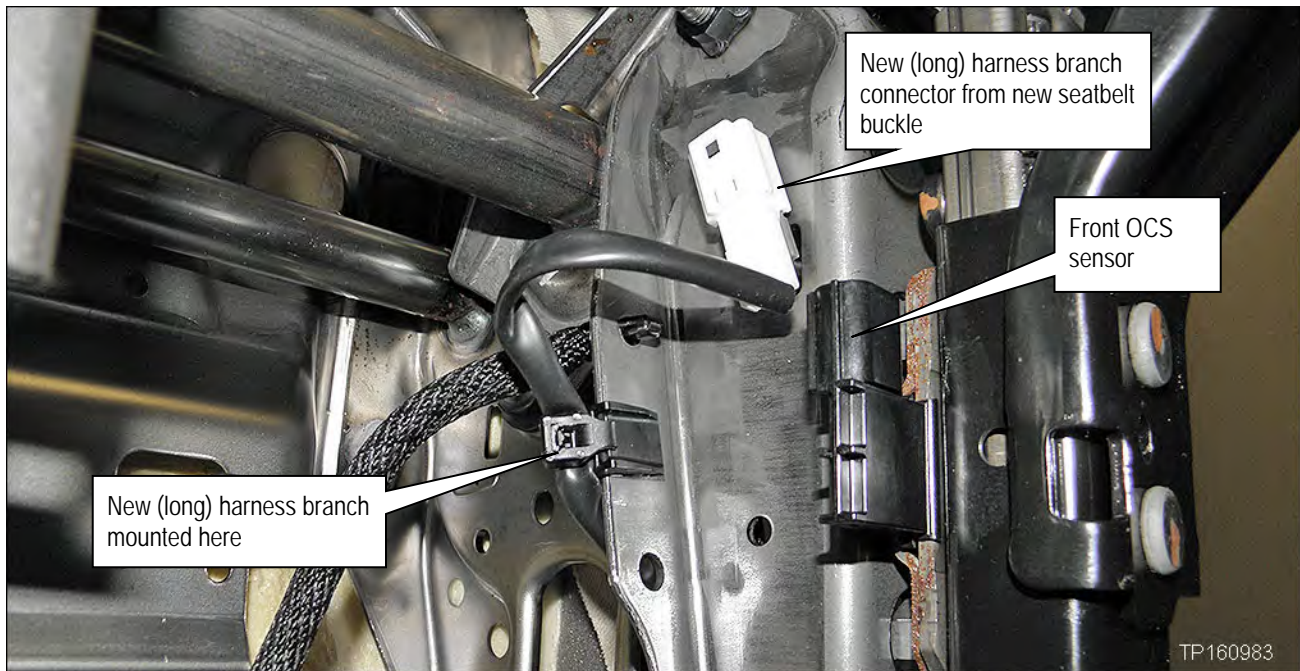


Figure 4

11. From under the seat, remove the old OCS harness and install the new one.

- The OCS harness consists of the wiring and connectors between the OCS sensors, OCS control unit, and new seatbelt buckle.

IMPORTANT:

- a. Disconnect one OCS harness connector or mounting clip, then
 - b. Connect the new OCS harness connector or mounting clip before moving to the next one.
- Disconnecting/connecting one at a time will ensure that the new harness is connected **exactly** as the old one.
 - Refer to images of the OCS harness on the next page.
 - Refer to images on pages 8 and 9 for exact harness mounting points.

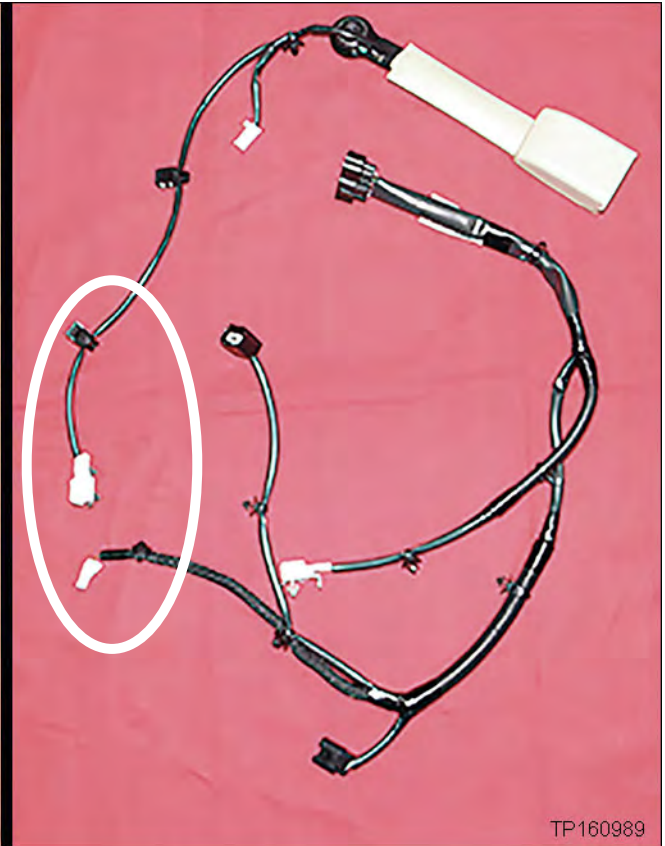
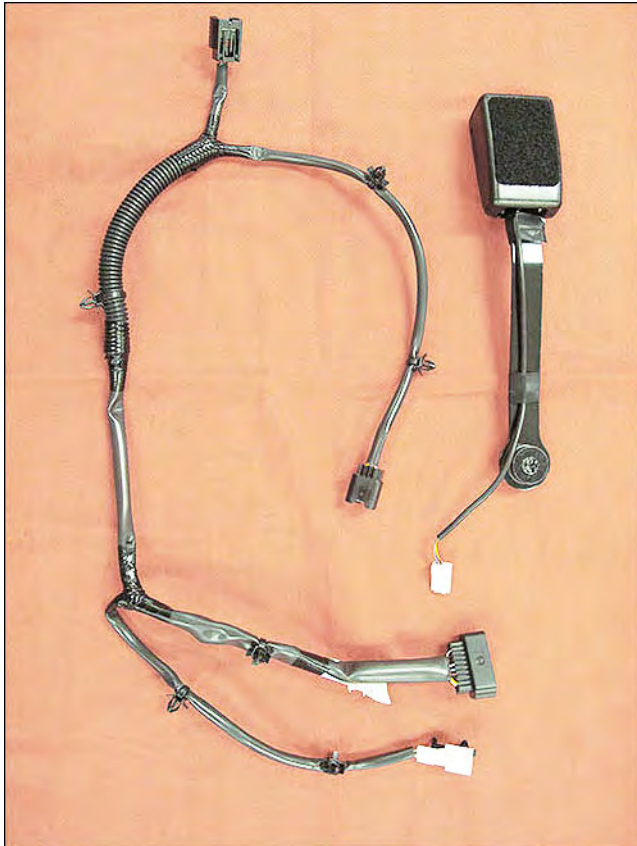
EXAMPLE

Old OCS harness and seatbelt buckle are removed from the seat.

EXAMPLE

New OCS harness and seatbelt buckle are installed

Notice the new harness and buckle have a new branch and connector



TP160989

Figure 5

OCS Seat Harness Mounting Points

NOTE: Figures 6 – 9 show a seat without climate control. For a seat with climate control the OCS harness routing and mounting is the same.

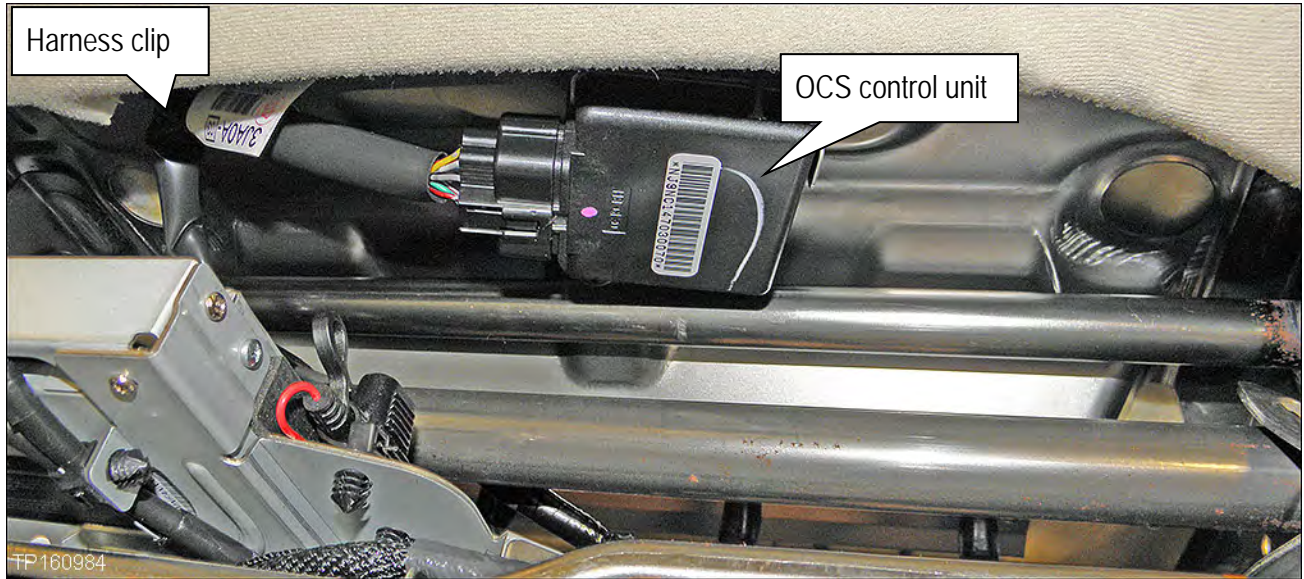


Figure 6

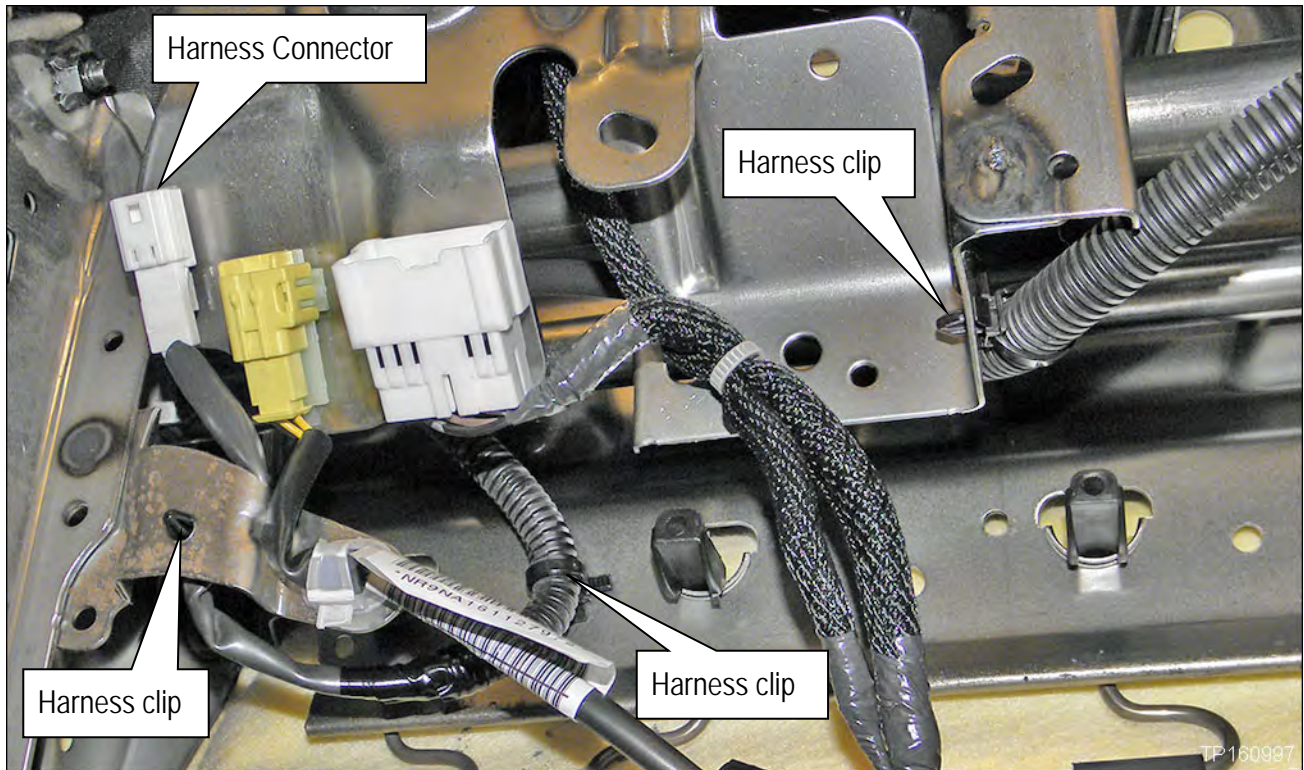


Figure 7

Continued on the next page.

OCS Seat Harness Mounting Points continued

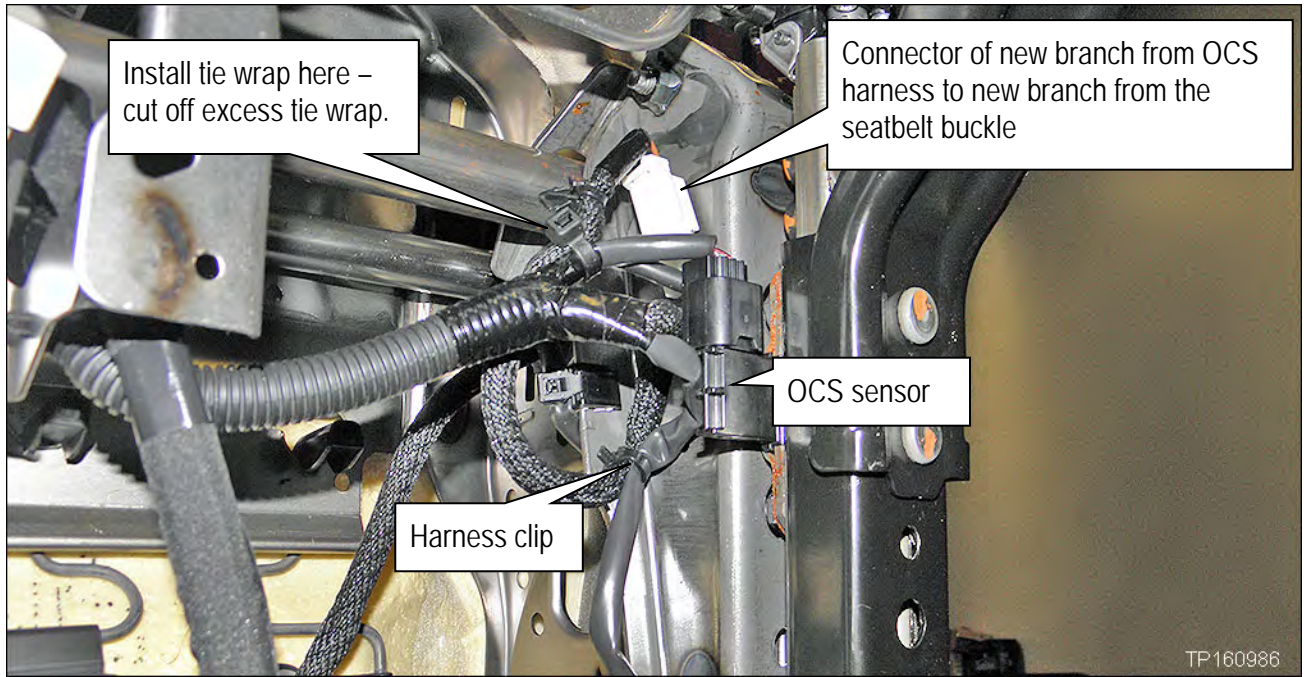


Figure 8

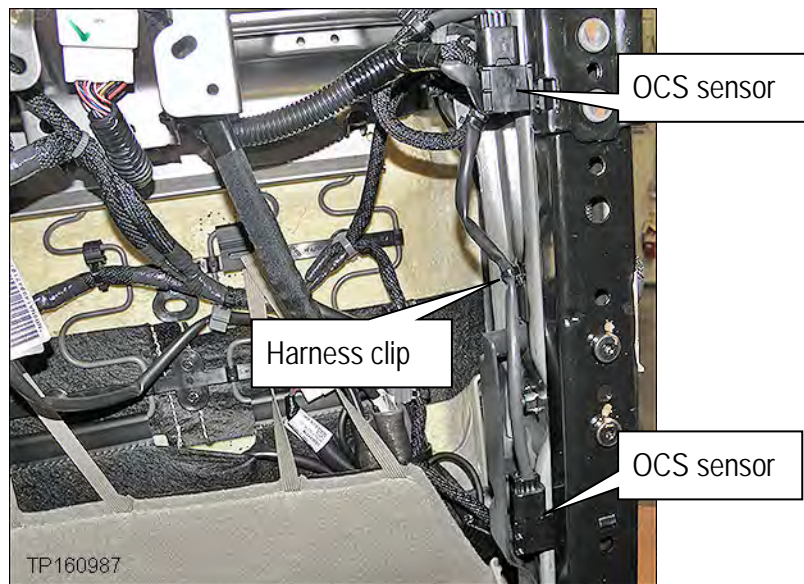


Figure 9

12. Replace the OCS control unit with the new one.

- OCS control unit is held on with 2 screws.
- The OCS control unit is located under the front edge of the seat.

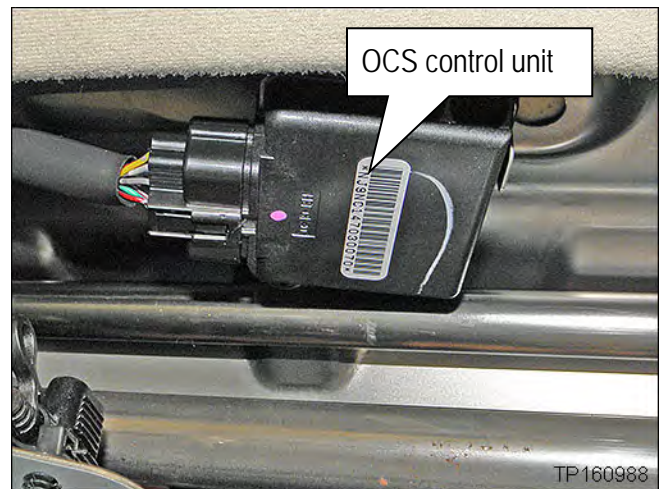


Figure10

13. Reinstall the seat into the vehicle in reverse order of removal.

- Torque passenger seat mounting bolts to: 48 N•m (4.9 kg-m, 35 ft-lb)

14. If battery cables were not connected as part of the seat installation, reconnect them now, positive cable first.

15. Reset/reinitialize systems as needed.

- Refer to the ESM section, PG – Power, Supply & Ground Elements for a listing of systems that require reset/initialization after reconnecting the 12V battery.
 - Look in the PG section index for ADDITIONAL SERVICE WHEN REMOVING BATTERY NEGATIVE TERMINAL.
 - This list often includes items such as audio, power windows, clock, etc.

16. Perform Zero Point Reset, using CONSULT III plus, on the next page.

Zero Point Reset

1. Prepare the vehicle for OCS zero point reset as follows:
 - Level the vehicle.
 - No objects on the passenger seat or in the storage bin.
 - No occupants in the vehicle – including the servicing technician.
 - PC is outside of the vehicle on a suitable support.
 - Do not set the PC on the vehicle.
 - Do not touch the vehicle during the OCS zero point reset.
 - Minimize vibrations of the vehicle.
2. Connect the plus VI to the vehicle.
3. Open / start CONSULT-III plus (C-III plus).
4. Turn the ignition ON, with engine OFF (engine not running/not in ready mode).
5. Wait for the plus VI to be recognized.
 - The Serial No. will display when the plus VI is recognized.
6. Select **Diagnosis (One System)**.
7. Scroll C-III plus (All systems) and select **OCCUPANT DETECTION**.

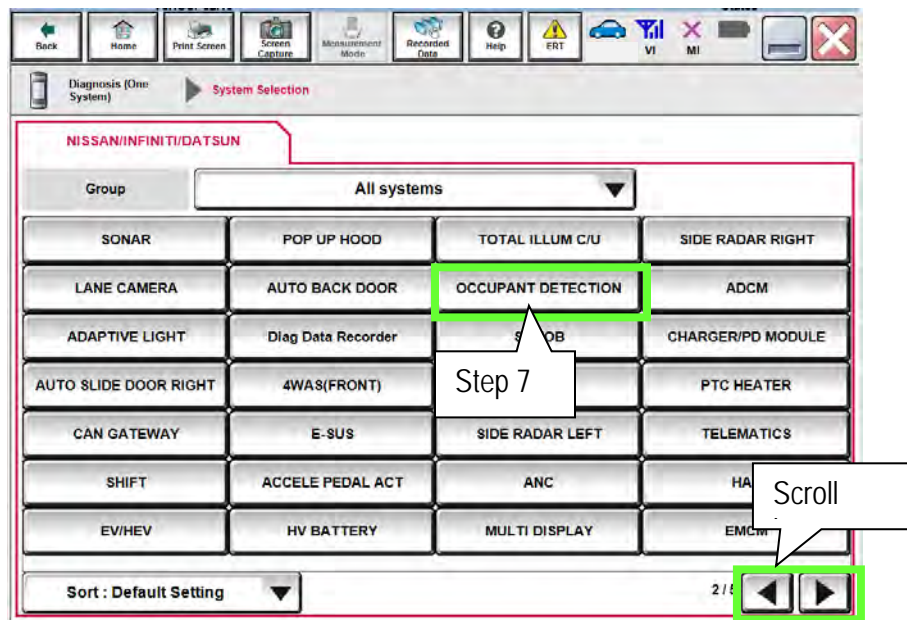


Figure 1A

8. Select Zero point reset function.

9. Select Start.

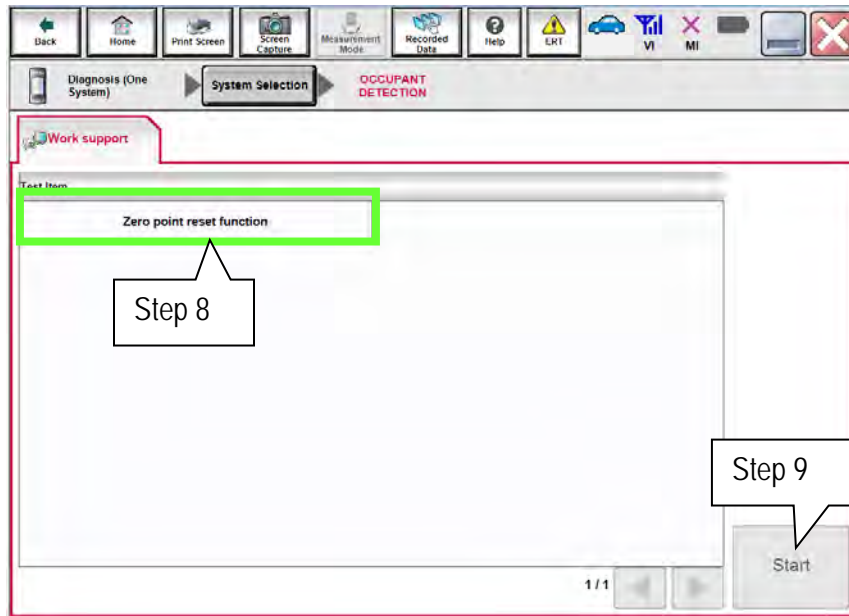


Figure 2A

10. Select Next.

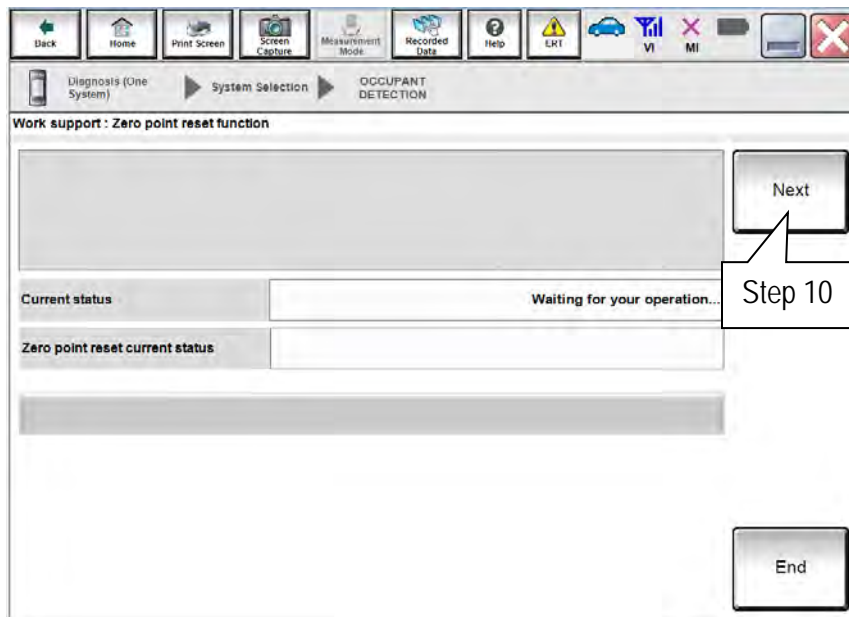


Figure 3A

11. Select **Start** and then proceed to step 12.

- After selecting **Start**, if Figure 5A is displayed:
 - a. Check the OCS control unit and confirm that harness connector is completely seated.
 - b. Turn the ignition OFF and then restart procedure from step 4 on page 11.

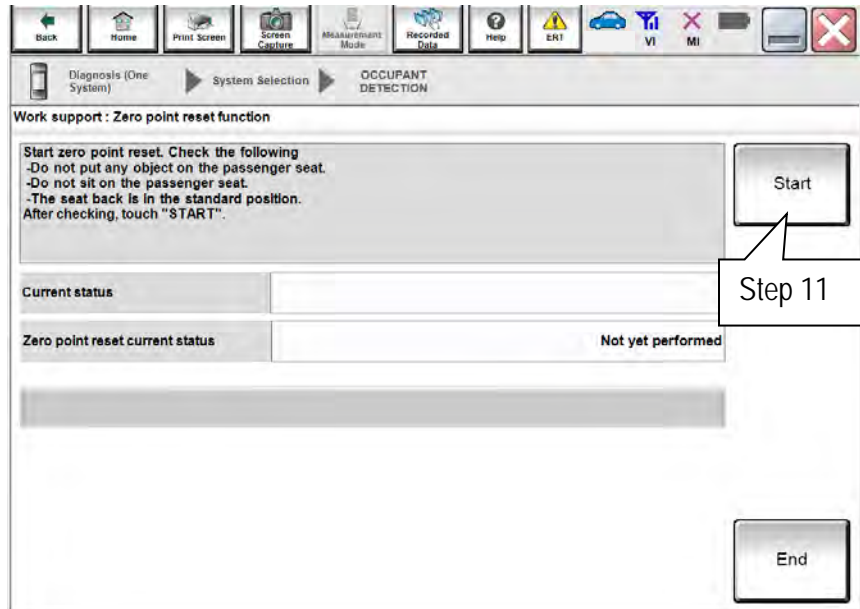


Figure 4A

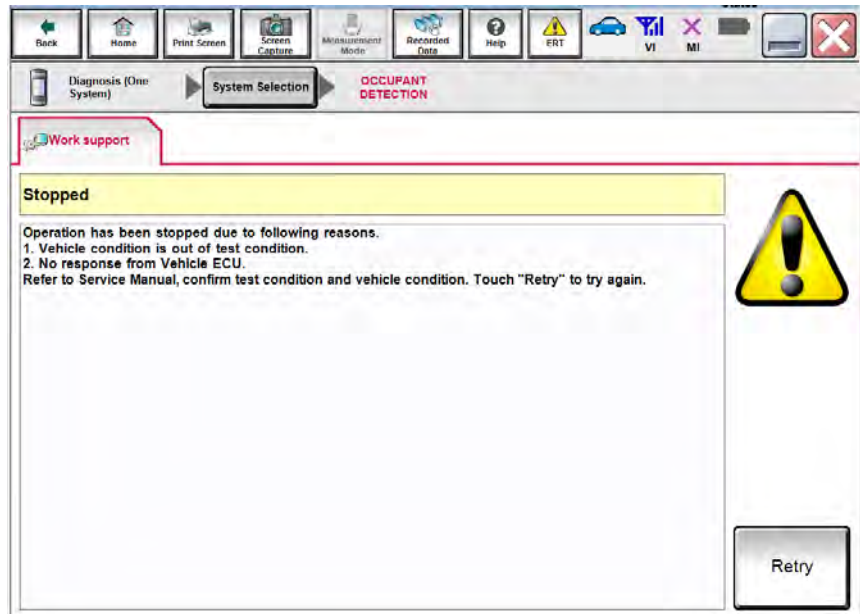


Figure 5A

12. Zero point reset will display "EXECUTING".

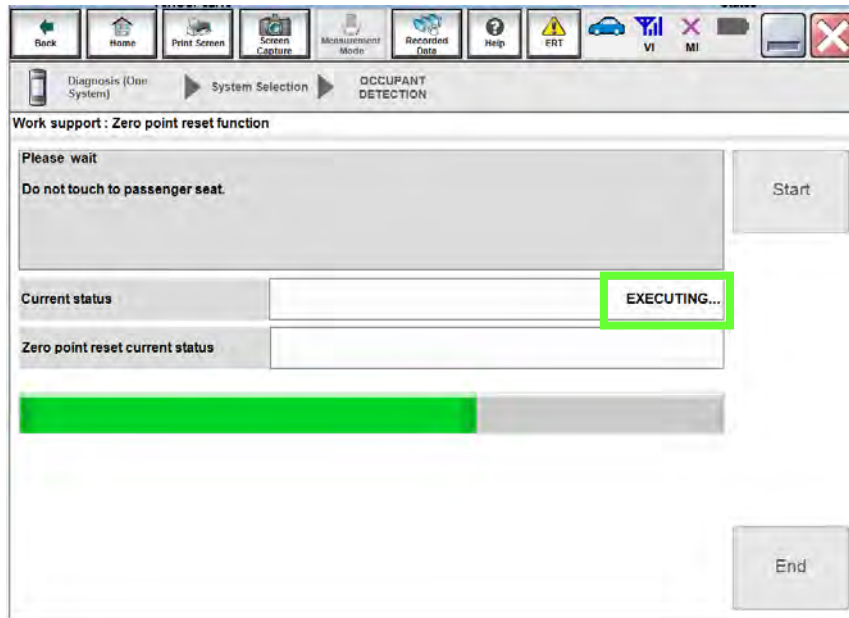


Figure 6A

13. When finished, "Completed" will display next to "Current status".

- Select **End** and then proceed to step 14.

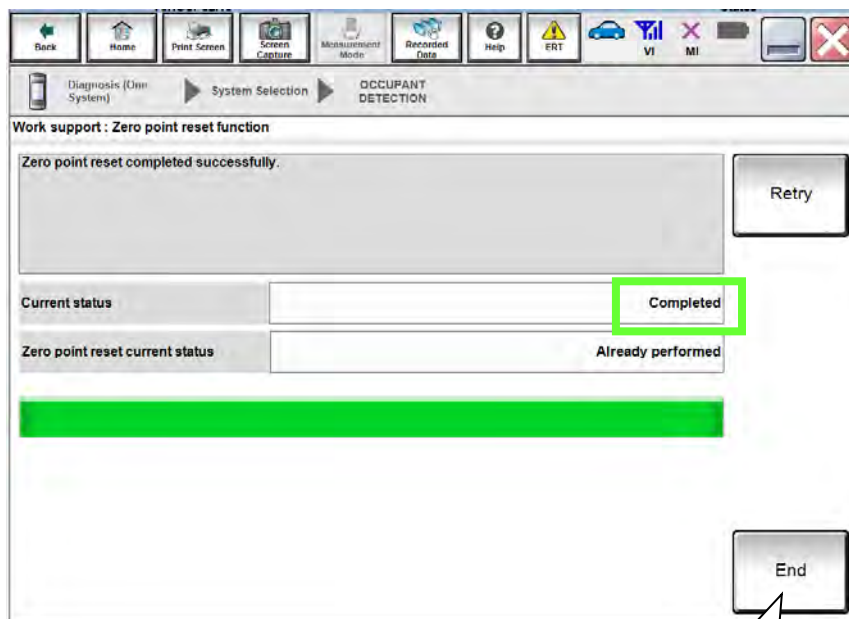



Figure 7A

End
Step 13

14. Turn the ignition OFF and then back ON and observe the air bag warning light and front passenger airbag status light:

- The air bag warning light  should illuminate for 7 seconds and then go out.

- The front passenger airbag status light  should illuminate for 7 seconds and then either stay illuminated or go out depending on the occupation of the front passenger seat.

Front Passenger Airbag Status Light Operation

| CONDITION | DESCRIPTION | PASSENGER AIR BAG INDICATOR LIGHT | FRONT PASSENGER AIR BAG STATUS |
|-----------------|--|-----------------------------------|--------------------------------|
| Empty | Empty front passenger seat | ON (illuminated) | DISABLED |
| Nobody/Somebody | Bag or Child or Child Restraint or Small Adult in the front passenger seat | ON (illuminated) | DISABLED |
| Adult | Adult in front passenger seat | OFF (dark) | ENABLED |

NOTE: If the air bag warning light or the front passenger airbag status light does not operate as described above there may be an issue not covered by this bulletin. Refer to ASIST and the appropriate Service Manual for additional diagnostic and repair information.

15. Provide the customer with a printed copy of FRONT PASSENGER AIR BAG STATUS LIGHT OPERATION (see last page).

PARTS INFORMATION

| MODEL | YEAR | DESCRIPTION | PART # | QUANTITY |
|------------------------------|-------------|--|-------------|----------|
| QX60 | 2014 - 2016 | Controller Assy-Occupant Sensor (OCS Control Unit) | 98856-9NF0A | 1 |
| JX35 | 2013 | Controller Assy-Occupant Sensor (OCS Control Unit) | 98856-9NA6A | 1 |
| 2013 JX35 and 2014-2016 QX60 | | Seatbelt Buckle – Black/Charcoal | 86842-9NF8B | 1 |
| 2013 JX35 and 2014-2016 QX60 | | Seatbelt Buckle – Beige/Tan | 86842-9NF8A | |
| 2013 JX35 and 2014-2016 QX60 | | OCS Harness | 98854-9NF0A | |
| 2013 JX35 and 2014-2016 QX60 | | Clip (Tie-wrap) | 24224-3VX0B | 1 |

CLAIMS INFORMATION

Submit a CM line claim using the following claims coding:

| CM ID | DESCRIPTION | OP CODE | FRT |
|-------|----------------------|---------|----------|
| P7321 | Perform OCS Retrofit | P73210 | 1.0 hrs. |

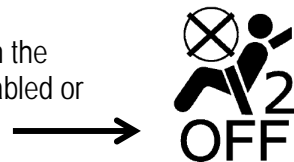


FRONT PASSENGER AIR BAG STATUS LIGHT OPERATION

NOTE: Please print this page and place a copy in the vehicle.

OCS SYSTEM OPERATION

The OCS system enables or disables the front passenger air bag depending on the weight applied to the front passenger seat. Front passenger air bag status (Enabled or Disabled) is indicated by the front passenger air bag status lamp pictured here



- When the front passenger seat is empty, the passenger air bag status lamp should be ON (illuminated) which means the passenger air bag is Disabled.
- When the front passenger seat is occupied by an adult, the passenger air bag status lamp should be OFF (dark) which means the passenger air bag is Enabled.
- When the front passenger seat is occupied by a child, a child restraint, or a small adult, the passenger air bag status lamp should be ON (illuminated) which means the passenger air bag is Disabled.