



Preliminary Information

PIP5191B Engine Ticking Noise or oil pressure fluctuation On Cold Start

Models

Brand:	Model:	Model Years:	VIN:		Engine:	Transmissions:
			from	to		
Buick	LaCrosse	2005 - 2016	ALL	ALL	3.0 LF1, 3.0 LFW, 3.6 LY7, 3.6 LLT, 3.6 LFX	All
Buick	Allure (Canada Only)	2005 - 2016	ALL	ALL	3.0 LF1, 3.0 LFW, 3.6 LY7, 3.6 LLT, 3.6 LFX	ALL
Buick	Enclave	2008 - 2016	All	ALL	3.6 LY7, 3.6 LLT	ALL
Cadillac	ATS	2013 - 2016	ALL	ALL	3.6 LFX, 3.6 LF4	ALL
Cadillac	CTS	2004 - 2016	ALL	ALL	2.8 LP1, 3.0 LF1, 3.0 LFW, 3.6 LY7, 3.6 LFX, 3.6 LLT, 3.6 LF3	ALL
Cadillac	SRX	2004 - 2016	ALL	ALL	2.8 LP1, 2.8 LAU, 3.0 LFW, 3.0 LF1, 2.6 LY7, 3.6 LLT, 3.6 LFX	ALL
Cadillac	STS	2005 - 2011	ALL	ALL	3.6 LY7, 3.6 LLT	ALL
Cadillac	XTS	2013 - 2016	ALL	ALL	3.6 LF3, 3.6 LFX	ALL
Chevrolet	Camaro	2010 - 2015	ALL	ALL	3.6 LLT, 3.6 LFX	ALL
Chevrolet	Caprice PPV	2012 - 2015	ALL	ALL	3.6 LFX	ALL
Chevrolet	Captiva Sport	2008 - 2015	ALL	ALL	3.0 LF1, 3.0 LFW, 3.6 LFX	ALL
Chevrolet	Equinox	2008 - 2015	ALL	ALL	3.0 LF1, 3.0 LFW, 3.6 LFX	ALL
Chevrolet	Impala	2012 - 2016	ALL	ALL	3.6 LFX	ALL
Chevrolet	Malibu	2008 - 2012	ALL	ALL	3.6 LY7	ALL
Chevrolet	Traverse	2009 - 2016	ALL	ALL	3.6 LLT	ALL
GMC	Acadia	2007 - 2016	ALL	ALL	3.6 LLT	ALL
GMC	Terrain	2010 - 2015	ALL	ALL	3.0 LF1, 3.0 LFW, 3.6 LFX	ALL
Pontiac	G6	2007 - 2010	ALL	ALL	3.6 LY7	ALL
Pontiac	G8	2008 - 2009	ALL	ALL	3.6 LLT	ALL
Pontiac	Torrent	2008 - 2009	ALL	ALL	3.6 LY7	ALL
Saturn	Aura	2007 - 2009	ALL	ALL	3.6 LY7	ALL
Saturn	Outlook	2007 - 2010	ALL	ALL	3.6 LY7, 3.6 LLT	ALL
Saturn	Vue	2008 - 2010	ALL	ALL	3.6 LY7	ALL

The following diagnosis might be helpful if the vehicle exhibits the symptom(s) described in this PI.

Condition / Concern

A Customer may complain of a ticking noise or oil pressure fluctuation on cold start after sitting more than 6 hours or possible DTC's P05CF or P05CE.

The engine will usually start quiet, then make a ticking noise after a few seconds that lasts about 3 - 15 seconds and then go away for the rest of the day, or possibly set DTC's P05CF or P05CE and the oil pressure will continue to fluctuate.

Recommendations / Instructions

We have identified a possible concern with the oil pump pick-up tube to block seal being compressed.

When this occurs there is the potential to draw in air when first started before the pump picks up oil to seal the gap, Or to continue to pull some air causing oil pressure fluctuation.

If you encounter this concern, remove the oil pan and inspect the seal.

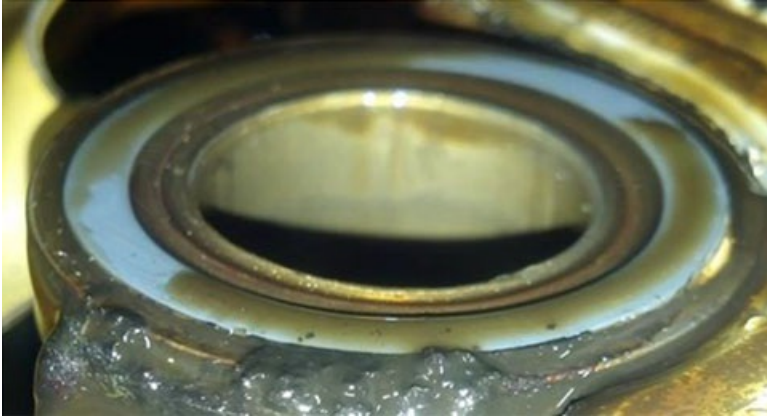
NOTE: THIS CONCERN IS MORE PREVALENT ON 50,000 MILE OR HIGHER ENGINES.

If this seal is compressed within the cutout of the pick-up tube, then replace the seal and reevaluate the concern.

(See Pictures Below)



This is an example of a new seal



This is an example of a compressed (worn out) seal

Warranty Information

For vehicles repaired under the POWERTRAIN warranty use:

Labor Code	Description	Labor Time
4065870	Oil Pan Replacement	Use Published Labor Operation Time

Please follow this diagnostic or repair process thoroughly and complete each step. If the condition exhibited is resolved without completing every step, the remaining steps do not need to be performed.



© 2016 General Motors. All Rights Reserved.