

Classification:

EL16-023a

Reference:

ITB16-021a

COPYRIGHT© NISSAN NORTH AMERICA, INC.  
Date:

July 19, 2017

## THEFT ALARM SOUNDS WHEN VEHICLE IS LOCKED, UNLOCKED, OR DOOR/TRUNK OPENED

This bulletin has been amended. The APPLIED VEHICLES and PARTS INFORMATION sections have been revised.  
No other changes have been made. Please discard previous versions of this bulletin.

**APPLIED VEHICLES:** 2013 JX35 (L50)  
2014 – 2016 QX60 (L50)  
2014 – 2016 QX60 Hybrid (L50)  
2014 – 2015 Q50 (V37)  
2014 – 2015 Q50 Hybrid (V37)

**APPLIED VIN & DATE:** 2013 – 2015 vehicles: All VINs and Dates  
2016 QX60 and QX60 Hybrid built before:  
5N1(\*)L0M(\*)GC 526577 // July 11, 2016

### IF YOU CONFIRM

Intermittently, the theft alarm triggers (horn sounds and lights flash) when one of the following occur:

- Using the lock, unlock, or trunk open function on the Intelligent Key
- Pushing a handle request switch (door or trunk)
- Touching a door handle one touch unlock sensor
- Opening a door or the trunk with the vehicle unlocked

and

CONSULT-III plus (C-III plus) shows the last item to trigger the theft alarm is BATTERY.

- Refer to Check Last Item to Trigger Theft Alarm on the next page.

### ACTION

Replace the Body Control Module (BCM).

- Refer to the Electronic Service Manual, section BCS-Body Control Systems, for replacement information.
- Use the **new** BCM listed in the PARTS INFORMATION section.

Infiniti Bulletins are intended for use by qualified technicians, not 'do-it-yourselfers'. Qualified technicians are properly trained individuals who have the equipment, tools, safety instruction, and know-how to do a job properly and safely. NOTE: If you believe that a described condition may apply to a particular vehicle, DO NOT assume that it does. See your Infiniti retailer to determine if this applies to your vehicle.

## Check Last Item to Trigger Theft Alarm

1. Turn the ignition ON, engine OFF / not Ready.
2. Connect the plus VI and start C-III plus.
3. Navigate the C-III plus to the screen shown in Figure 1.
  - Diagnosis (One System) or Diagnosis (All Systems) and then BCM.
4. Select **THEFT ALM**.

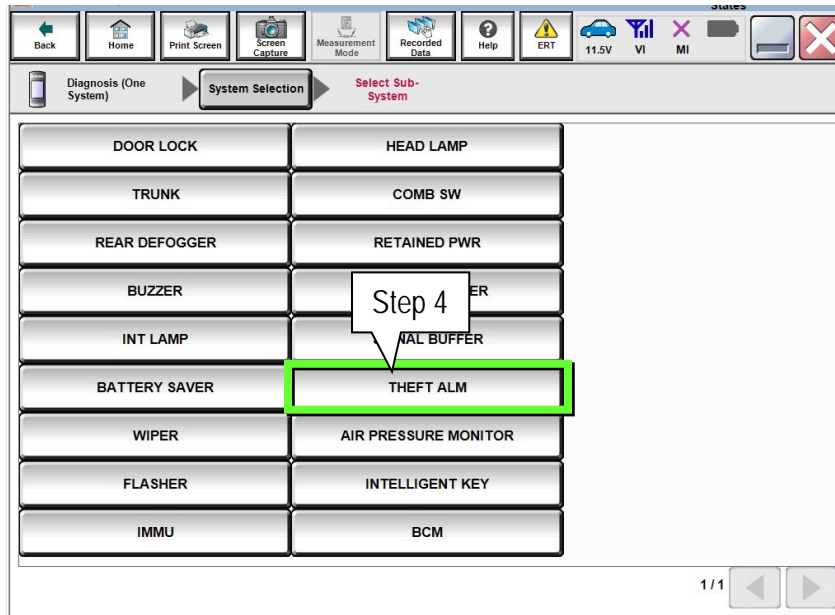


Figure 1

5. Select **Work Support**.

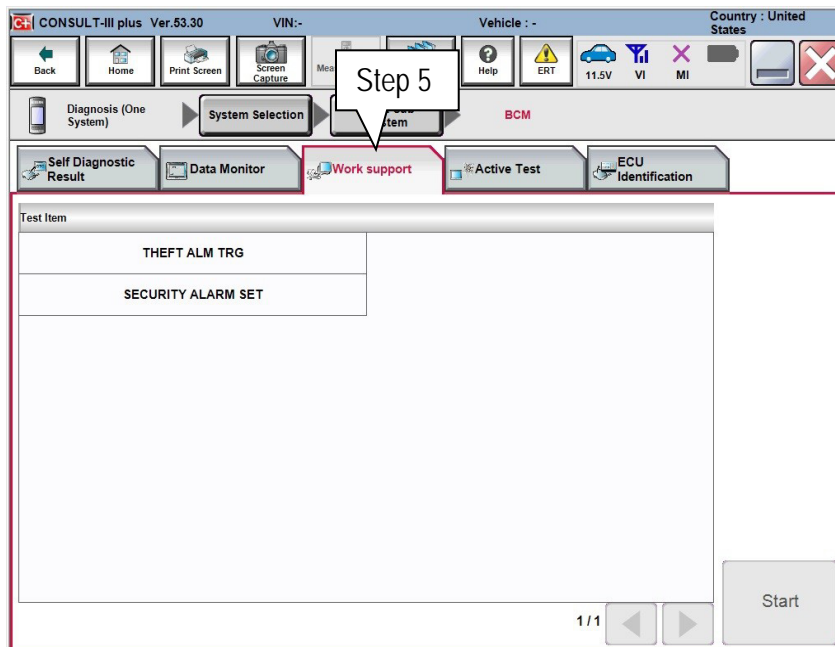


Figure 2

6. Select THEFT ALM TRG, then Start.

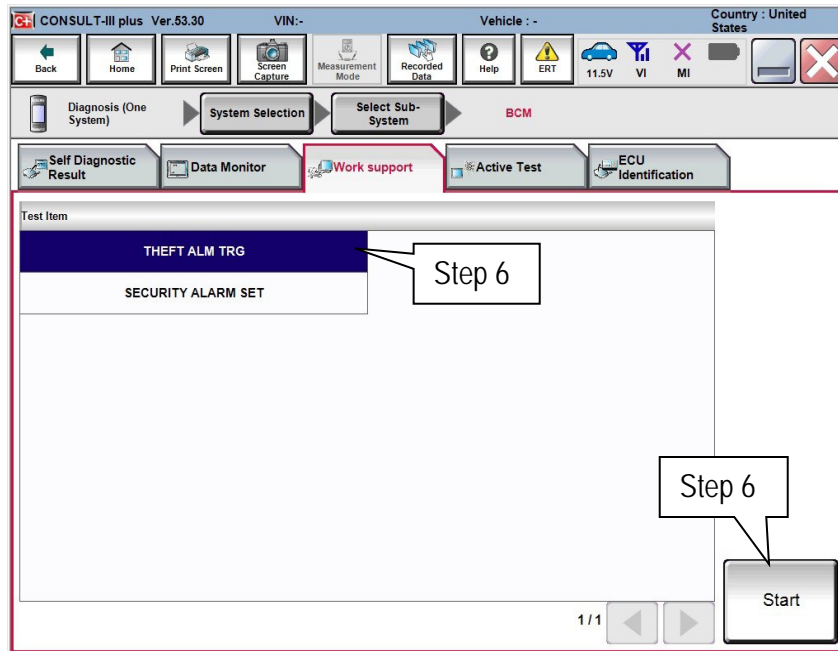


Figure 3

7. CONSULT-III plus will display a list of all the theft alarm Monitor Items (Figure 4).

- If BATTERY indicates **On**, and the other conditions under IF YOU CONFIRM on page 1 are satisfied, this bulletin applies.
- If BATTERY indicates **Off**, this bulletin does not apply.

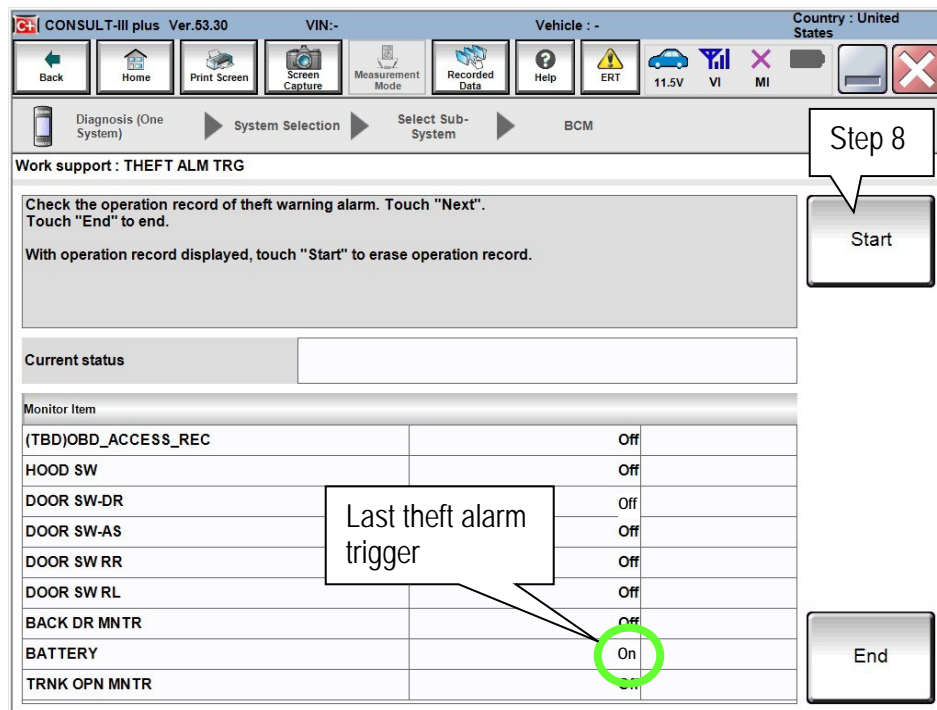


Figure 4

8. After a theft alarm trigger has been noted, the history can be cleared by selecting **Start**.

**PARTS INFORMATION**

DESCRIPTION	MODEL	YEAR	PART NUMBER	QUANTITY
Body Control Module (BCM)	Q50 and Q50 Hybrid	2014 – 2015	284B1 – 4HB1B	1
	JX35	2013	284B1 – 9PB1B	
	QX60 and QX60 Hybrid	2014 – 2015	284B1 – 9PB1B	
	QX60 and QX60 Hybrid	2016	284B1 – 9PM0A	

**CLAIMS INFORMATION**

Submit a Primary Part (PP) type claim using the following claims coding:

DESCRIPTION	PFP	OP CODE	SYM	DIA	FRT
RPL BODY CONTROL/IVMS MODULE	(1)	RD94AA	ZE	32	(2)

- (1) Refer to the Parts Information and use the appropriate BCM part number as the PFP.
- (2) Reference the current Infiniti Warranty Flat Rate Manual and use the indicated FRT.

