

Classification:

EC16-035

Reference:

ITB17-042

Date:

July 21, 2017

INFINITI; DTC P0456 CAUSED BY EVAP LEAK AT VENT CONTROL VALVE O-RING

APPLIED VEHICLES: 2017-2018 QX30 (H15)
2014-2017 QX50 (J50)
2016-2017 QX60 and QX60 Hybrid (L50)

IF YOU CONFIRM

The MIL is ON in an **APPLIED VEHICLE** with DTC P0456 (EVAP VERY SML LEAK)

AND

- DTC P0456 is not caused by a loose fuel fill cap (refer to ITB13-044).
- An EVAP leak has been detected where the vent control valve mounts to the canister.
- The vent control valve O-ring seal is determined to be the cause.

ACTION

1. **DO NOT REPLACE** the vent control valve.
2. Replace the vent control valve **O-ring seal** (O-ring).
 - Refer to **SERVICE PROCEDURE** on page 2.

IMPORTANT: The purpose of ACTION (above) is to give you a quick idea of the work you will be performing. You **MUST** closely follow the entire SERVICE PROCEDURE as it contains information that is essential to successfully completing this repair.

Infiniti Bulletins are intended for use by qualified technicians, not 'do-it-yourselfers'. Qualified technicians are properly trained individuals who have the equipment, tools, safety instruction, and know-how to do a job properly and safely. NOTE: If you believe that a described condition may apply to a particular vehicle, DO NOT assume that it does. See your Infiniti retailer to determine if this applies to your vehicle.

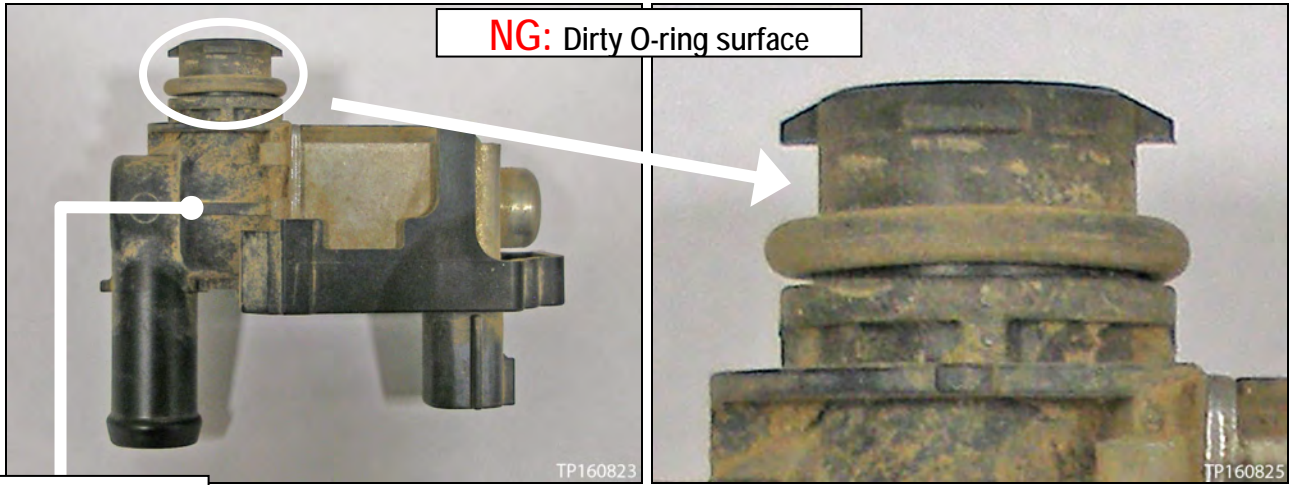
SERVICE PROCEDURE

1. Replace the O-ring.

- To access the O-ring, refer to the appropriate section in the Electronic Service Manual (ESM) of the **APPLIED VEHICLE** for vent control valve removal and installation.
- This O-ring is now available separately (see **PARTS INFORMATION**).
- When installing, do not add any lubrication to the O-ring.
- Seat the O-ring all the way down as shown on page 4, Figure 7.
 - Having the O-ring seated all the way down will assure it is not twisted or rolled over.
- Refer to the pictures on pages 3 and 4 for additional installation information.

CAUTION:

- Make sure the surfaces that the O-ring comes in contact with are clean.
- When installed, make sure the O-ring is not twisted or rolled over.
- Verify the repair is complete by checking for leaks with a “smoke” leak detection machine or CONSULT-III plus (C-III plus).
 - If a “smoke” leak detection machine is used, follow the manufacturer’s operating instructions.
 - If C-III plus is used:
 1. Confirm the fuel filler cap is secure.
 2. Connect Essential Tool J-42909 to the EVAP service port.
 3. Using Active Test, close the vent control valve.
 4. Apply pressure using J-42909 until the bar graph reaches about halfway.
 5. Monitor the bar graph for 10 minutes.



Vent control valve

Figure 1

Figure 2



Figure 3

Figure 4

Where vent control valve mounts in canister

Canister

This surface must be clean all around

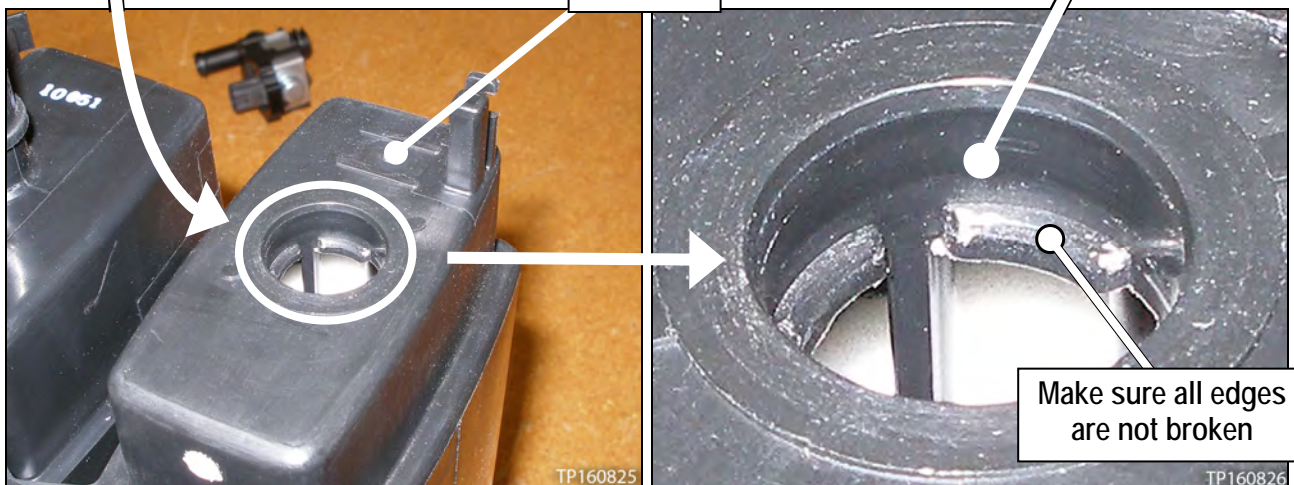


Figure 5

Figure 6

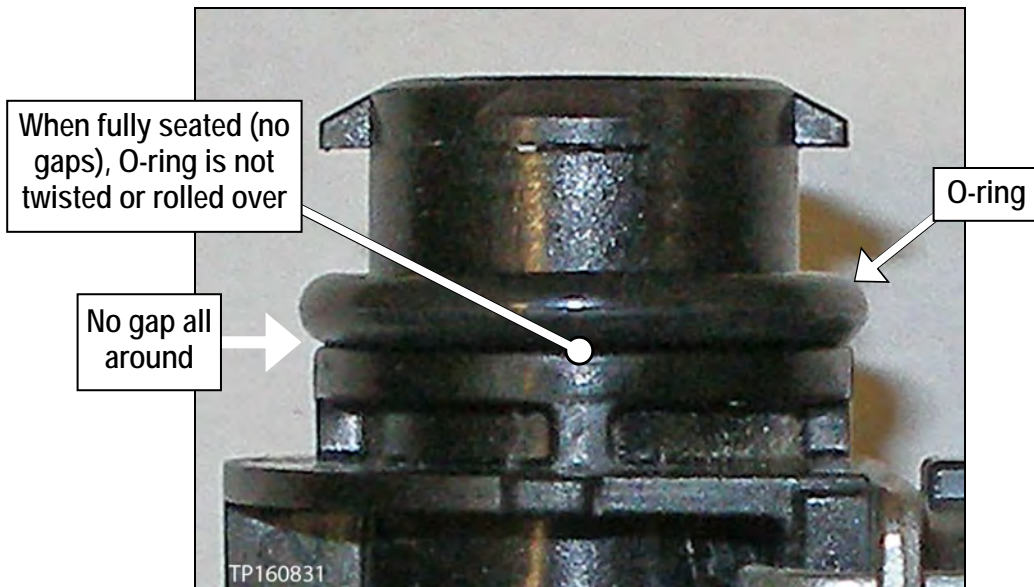


Figure 7

PARTS INFORMATION

| DESCRIPTION | P/N | QUANTITY |
|-------------|-------------|----------|
| SEAL O-RING | 16618-JF00A | 1 |

CLAIMS INFORMATION

Submit a Primary Part (PP) line claim using the following claims coding:

| DESCRIPTION | MODEL | PFP | OP CODE | SYM | DIA | FRT |
|-----------------------------------|----------------------|-------------|---------|-----|-----|-----|
| Replace Vent Control Valve O-Ring | QX50 | 16618-JF00A | FX57AA | HD | 32 | 0.4 |
| | QX60 and QX60 Hybrid | | | | | 0.5 |
| | QX30 | | | | | 0.5 |