

AH01 - Replacing Fastening Screws For Fuel Collection Pipes (Stop-Sale Campaign)

Revision: **February 23, 2017**

This revision amends AH01 as follows:

- 1 — The work procedure was amended, now the carrier should be removed together with the trailing arms instead of lowering it in order to remove the screws.
- 2 — Scope 11 was added for cars where a replacement engine was installed but not documented. With this scope, the engine number must be checked according to a list published via PPN to determine if the newly installed engine is affected or not.

Model Year: **2017**

Vehicle Type: **911 Carrera (991)/911 Carrera S (991)/911 Carrera 4 (991)/911 Carrera 4S (991)
911 Targa 4 (991)/911 Targa 4S (991)**

Subject: **Fastening screws for fuel collection pipes**

Concern: **There is a possibility that the fastening screws for the fuel collection pipes on the affected vehicles can shear off due to stress corrosion cracking.**

If this happens, the high fuel pressure that builds up in the fuel injection system when the engine is running can press the relevant fuel collection pipe off the fuel injectors. This can cause a fuel leak in the engine compartment.

Remedial action: Replace fastening screws for both fuel collection pipes.



Information

Vehicles with replacement engine installed

On vehicles in which a **replacement engine was installed** and the relevant **engine number was not documented**, we **cannot be sure** that the correct fastening screws were used. These vehicles are **also assigned to Scope 11**.

The engine number on the vehicles must first be checked. The fastening screws may or may not have to be **replaced, depending on the result of the check**.

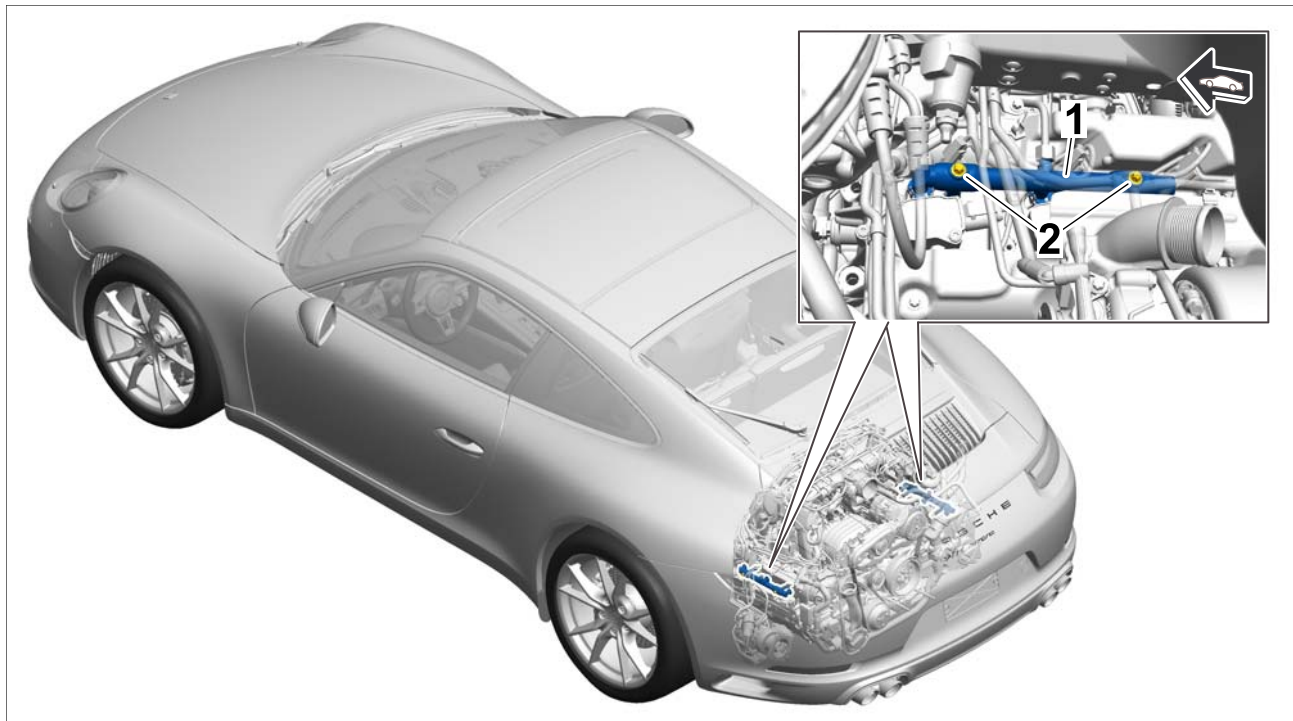
For instructions and further information, see ⇒ *Technical Information 'AH0100 Scope 11 - Checking engine number'*.

To find out which campaign scope is assigned to the respective vehicle for this campaign, see PIWIS Vehicle Information.

Parts Info: NOTE: NECESSARY PARTS FOR THIS CAMPAIGN ARE STILL BEING MANUFACTURED AND ARE EXPECTED TO ARRIVE CW07. ONCE THE REQUIRED PARTS FOR THIS CAMPAIGN HAVE ARRIVED, PCNA

WILL BEGIN THE AUTOMATIC ALLOCATION PROCESS FOR UP TO 50% OF THE VEHICLES THAT ARE SERVICED AT YOUR DEALERSHIP. APPROXIMATELY 45 DAYS AFTER YOUR FIRST ALLOCATION, YOUR DEALER WILL AUTOMATICALLY BE ALLOCATED AN ADDITIONAL 30% OF THE REQUIRED PARTS FOR THE VEHICLES THAT ARE STILL IN NEED OF REPAIR.

Installation
position:



Installation position overview

- 1 – Fuel collection pipe
- 2 – Fastening screws (**replace**)

Affected Vehicles: Only the vehicles assigned to the campaign (see also PIWIS Vehicle information). This campaign affects 4,518 vehicles in North America.

Required parts and materials

Part No.:	Part No.	Designation – Use	Qty.
	000 043 306 00	⇒ Torx screw, BM 6 x 85 – Fuel collection pipe	4 ea.

999 072 875 01	⇒ Hexagon-head bolt, M12 x 1.5 x 95 – Rear axle carrier, outer	2 ea.
999 072 931 01	⇒ Hexagon-head bolt, M12 x 1.5 x 110 – Rear axle carrier, inner	2 ea.
999 072 930 01	⇒ Hexagon-head bolt, M12 x 1.5 x 105 – Lower trailing arm to wheel carrier	2 ea.
999 084 445 01	⇒ Lock nut, M12 x 1.5 – Lower trailing arm to wheel carrier	2 ea.
999 072 869 01	⇒ Hexagon-head bolt, M12 x 1.5 x 45 – Rear diagonal brace	2 ea.
999 073 443 01	⇒ Combination screw, M12 x 1.5 x 40 – Front diagonal brace	2 ea.
N 908 484 05	⇒ Hexagon nut, M12 x 1.5 – Engine carrier to engine mount	2 ea.
999 512 707 00	⇒ Hose clamp, 9.6 - 11.3 mm – Vacuum lines	4 ea.
999 512 498 00	⇒ Hose clamp, 13.1 - 15.3 mm – Vacuum lines	2 ea.

Also required for vehicles without PASM/PDCC:

999 084 123 09	⇒ Hexagon nut, M10 – Anti-roll bar to connecting link	2 ea.
----------------	--	-------

Also required for vehicles with PASM/PDCC (I-no. 031/352):

999 084 132 01	⇒ Hexagon nut, M12 – Anti-roll bar to actuator	2 ea.
----------------	---	-------

Materials: **Material required only for vehicles with body shape Targa:**

Part No.	Designation – Use	Qty.
...	Tie-wrap* approx. 4.0 mm wide, approx. 200 mm long e.g. Part No. 999 513 076 40 – Convertible-top service position	2 ea. *

* The WWS Warranty system will automatically add into the "Miscellaneous item" section (sublet) of the claim after the claim has been submitted..

Required tools

- Tools:
- Torque screwdriver, 1.5 - 3 Nm (1 - 2 ftlb.), e.g. **VAS 6494 - Torque screwdriver**
 - Torque wrench, 2 - 10 Nm (1.5 - 7.5 ftlb.), e.g. **V.A.G 1783 - Torque wrench, 2-10 Nm (1.5-7.5 ftlb.)**
 - Torque wrench, 6 - 50 Nm (4.5 - 37 ftlb.), e.g. **V.A.G 1331 - Torque wrench, 6-50 Nm (4.5-37 ftlb.)**
 - Torque wrench, 40 - 200 Nm (30 - 148 ftlb.), e.g. **V.A.G 1332 - Torque wrench, 40-200 Nm (30-148 ftlb.)**
 - Torque/torque angle screw tool, 20 - 400 Nm (15 - 296 ftlb.), e.g. **VAS 6942 - Torque/torque angle screw tool**
 - Hydraulic transmission jack, e.g. **V.A.G 1383 A - Engine/gearbox jack**
 - Suitable engine support, e.g. **9769 - retainer plate**
 - Suitable hose clip pliers, e.g. **V.A.G 1275A - Hose clip pliers**
 - Battery Charger/Power Supply - Suitable for AGM Type batteries, recommended current rating of 70A fixed voltage 13.5V to 14.5V.
 - **9900 - PIWIS Tester 3**

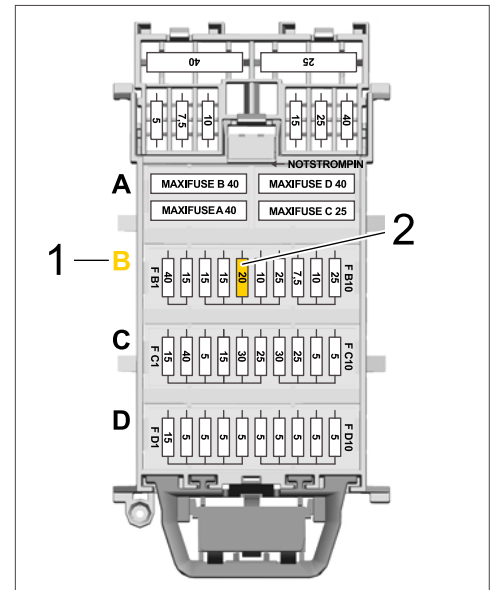
Additional tools required for vehicles with **Lane Change Assist (I-no. 457)** or **ParkAssist with reversing camera (I-no. 638)**:

- **VAS 6350A - Calibration unit**
- **VAS 6350/2 - Spacing laser**
- **VAS 6350/4 - Calibration Unit for Lane Change Assist**

Preparatory work

- Work Procedure: 1 Raise the vehicle on a lifting platform ⇒ *Workshop Manual '4X00IN Lifting the vehicle'*.
- 2 **For Cabriolet/Targa vehicles:**
Move convertible top into service position.
⇒ *Workshop Manual '6101IN Convertible top service position (Cabriolet)'*
⇒ *Workshop Manual '6101IN05 Convertible top service position'*
- 3 Relieve fuel pressure in the system.
- 3.1 Remove cover on the fuse carrier in the passenger compartment at the front left.

- 3.2 Pull out fuse for fuel pump.
 The fuse (20 A) is in **row B** ⇒ Fuse carrier in passenger compartment at the front left -1-, slot **FB5** ⇒ Fuse carrier in passenger compartment at the front left -2-.



Fuse carrier in passenger compartment at the front left

WARNING

Exhaust gases

- Risk of Carbon Monoxide (CO) Poisoning
- ⇒ Before starting the engine, position an exhaust extraction system behind the vehicle's exhaust pipes and switch it on.

- 3.3 Start the engine and leave it running at idle speed until it cuts out.
This can take up to 5 minutes.
- 3.4 Switch off ignition and remove ignition key.
- 3.5 Re-insert fuse for fuel pump.
- 4 Disconnect ground line at the battery ⇒ *Workshop Manual '2X00IN Work instructions after disconnecting the battery'.*
- 5 Remove engine-compartment blower ⇒ *Workshop Manual '198119 Removing and installing engine-compartment blower'.*
- 6 Remove both tail lights ⇒ *Workshop Manual '943119 Removing and installing tail lights'.*
- 7 Remove rear apron ⇒ *Workshop Manual '635519 Removing and installing rear apron'.*
- 8 Remove rear spoiler ⇒ *Workshop Manual '66581905 Removing and installing rear spoiler'.*

- 9 Remove air guide for charge-air cooling ⇒ *Workshop Manual '211019 Removing and installing air guide for charge-air cooling'*.
- 10 Remove pressure pipe at the left and right ⇒ *Workshop Manual '214119 Removing and installing pressure pipe'*.
- 11 Remove air cleaner housing ⇒ *Workshop Manual '242519 Removing and installing air cleaner housing'*.
- 12 Remove retaining frame for charge-air cooler at the left and right ⇒ *Workshop Manual '261519 Removing and installing retaining frame for charge-air cooler and heat shield'*.
- 13 **For Cabriolet/Targa vehicles:**
Remove support plate on the rear axle.
 - 13.1 Remove rear underbody cover ⇒ *Workshop Manual '519419 Removing and installing cover for rear underbody'*.
 - 13.2 Remove support plate ⇒ *Workshop Manual '421419 Removing and installing support plate'*.
- 14 Remove both diagonal braces on the rear axle ⇒ *Workshop Manual '421319 Removing and installing strut'*.

Replacing fastening screws for fuel collection pipes

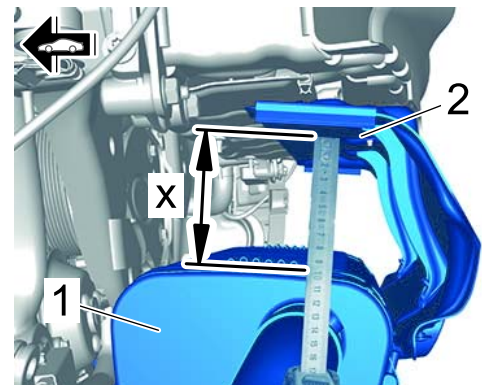
Work Procedure: 1 Remove rear axle carrier together with the lower trailing arms ⇒ *Workshop Manual '420619 Removing and installing rear-axle cross member'*



Information

- The weight must be distributed uniformly on the oil pan.
- Never apply localized pressure to the oil pan.

- 2 Slowly lower the engine until the gap between the rear silencer ⇒ *Required gap between rear silencer and heat shield -1-* and heat shield ⇒ *Required gap between rear silencer and heat shield -2-* is about **100 mm** ⇒ *Required gap between rear silencer and heat shield -dimension X-*.
For instructions, see ⇒ *Workshop Manual '100109 Lowering the engine'*.



Required gap between rear silencer and heat shield

3 Replace fastening screws for fuel collection pipes.

3.1 Loosen and unscrew front fastening screw
 ⇒ *Replacing fastening screws -2-* (viewed in direction of travel) for fuel collection pipe on cylinder 1–3 ⇒ *Replacing fastening screws -1-*.

3.2 Screw in and tighten new fastening screw, Part No. 000 043 306 00.

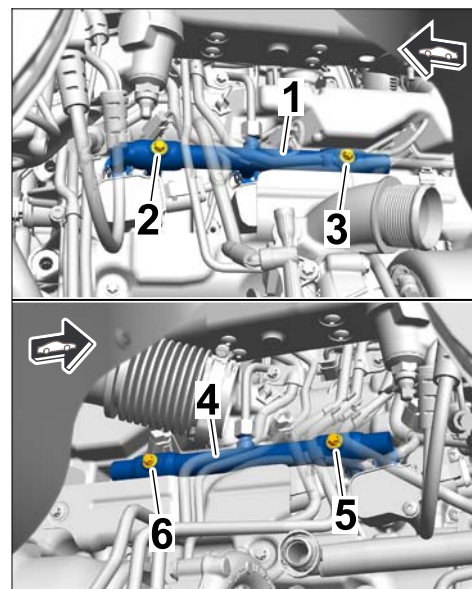
Tightening torque 13 Nm (9.5 ftlb.)

3.3 Loosen and unscrew rear fastening screw
 ⇒ *Replacing fastening screws -3-* for fuel collection pipe on cylinder 1–3 ⇒ *Replacing fastening screws -1-*.

3.4 Screw in and tighten new fastening screw, Part No. 000 043 306 00.

Tightening torque 13 Nm (9.5 ftlb.)

3.5 Repeat steps **3.1 to 3.4** on the fuel collection pipe on cylinder 4–6 ⇒ *Replacing fastening screws -4-* in order to replace the fastening screws ⇒ *Replacing fastening screws -5 and 6-*.



Replacing fastening screws

4 Raise the engine to installation position and secure it.

For instructions, see ⇒ *Workshop Manual '100109 Lowering the engine'*.

5 Install rear axle carrier together with the lower trailing arms ⇒ *Workshop Manual '420619 Removing and installing rear-axle cross member'*.



Information

- The weight must be distributed uniformly on the oil pan.
- Never apply localised pressure to the oil pan.

Concluding work

Work Procedure: 1 Install diagonal braces on the rear axle ⇒ *Workshop Manual '421319 Removing and installing strut'*.

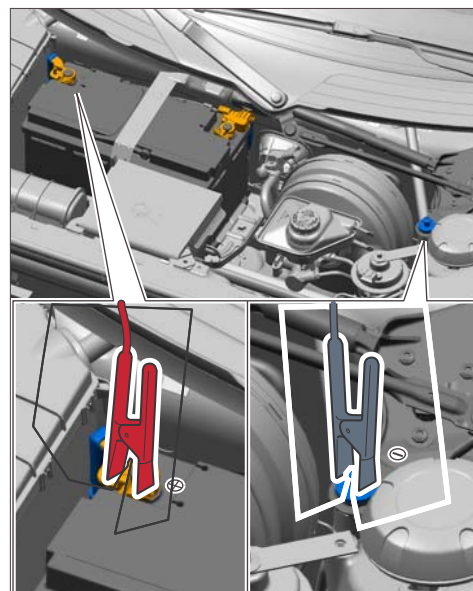
2 **For Cabriolet/Targa vehicles:**
 Install support plate on the rear axle.

2.1 Install support plate ⇒ *Workshop Manual '421419 Removing and installing support plate'*.

2.2 Install rear underbody cover ⇒ *Workshop Manual '519419 Removing and installing cover for rear underbody'*.

- 3 Install retaining frame for charge-air cooler at the left and right ⇒ *Workshop Manual '261519 Removing and installing retaining frame for charge-air cooler and heat shield'*.
- 4 Install air cleaner housing ⇒ *Workshop Manual '242519 Removing and installing air cleaner housing'*.
- 5 Install pressure pipe at the left and right ⇒ *Workshop Manual '214119 Removing and installing pressure pipe'*.
- 6 Install air guide for charge-air cooling ⇒ *Workshop Manual '211019 Removing and installing air guide for charge-air cooling'*.
- 7 Install rear spoiler ⇒ *Workshop Manual '66581905 Removing and installing rear spoiler'*.
- 8 Install rear apron ⇒ *Workshop Manual '635519 Removing and installing rear apron'*.
- 9 Install both tail lights ⇒ *Workshop Manual '943119 Removing and installing tail lights'*.
- 10 Install engine-compartment blower ⇒ *Workshop Manual '198119 Removing and installing engine-compartment blower'*.
- 11 Connect ground line to the battery ⇒ *Workshop Manual '2X00IN Work instructions after disconnecting the battery'*.
- 12 **For Cabriolet/Targa vehicles:**
Move convertible top out of service position.
⇒ *Workshop Manual '6101IN Convertible top service position (Cabriolet)'*
⇒ *Workshop Manual '6101IN05 Convertible top service position'*
- 13 Perform standardization run for rear spoiler.

- 13.1 Connect a battery charger or power supply, suitable for AGM type batteries, recommended current rating of 70A fixed voltage 13.5V to 14.5V.
First connect the positive cable of the charger to the positive terminal of the battery and then connect the negative cable of the charger to the ground point for jump-lead starting ⇒ *External power connection*.
Then switch on the battery charger and start charging the battery.
- 13.2 Switch on the ignition.
- 13.3 Connect the **PIWIS Tester** to the vehicle communication module (VCI) via the **USB cable**. Then connect the communication module to the vehicle and switch on the PIWIS Tester.

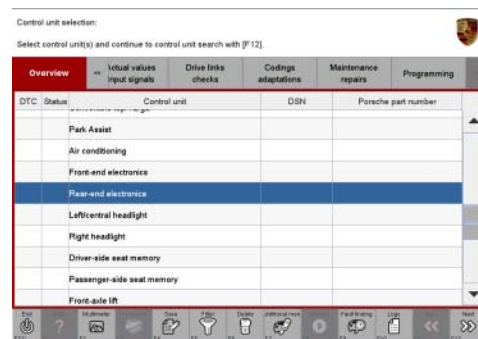


External power connection

- 13.4 On the PIWIS Tester start screen, call up the **'Diagnostics'** menu.

The vehicle type is then read out, the diagnostic application is started and the control unit selection screen is populated.

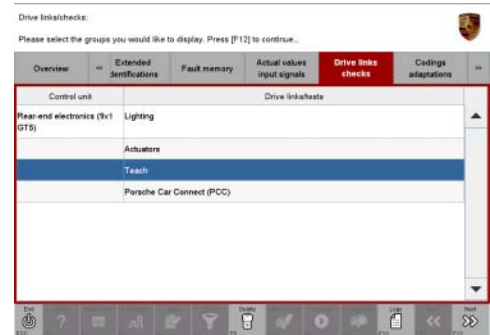
- 13.5 In the control unit selection screen (**'Overview'** menu), select the **'Rear-end electronics'** control unit and press •F12" ('Next') to confirm your selection ⇒ *Selecting rear-end electronics control unit*.
- 13.6 When the question "Create Vehicle Analysis Log (VAL)?" appears, either press •F12" ('Yes') to create a VAL or press •F11" ('No') if you do not want to create a VAL.



Selecting rear-end electronics control unit

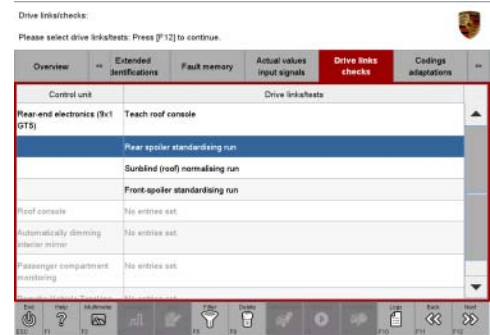
- 13.7 Press •F12" ('Next') to acknowledge the message that may appear informing you that campaigns for the vehicle are stored in the PIWIS information system.
- 13.8 Once the **'Rear-end electronics'** control unit has been found, select the **'Drive links/checks'** menu.

- 13.9 Select the '**Teach**' function and press •F12" ('Next') to confirm your selection ⇒ *'Teach' function*.



'Teach' function

- 13.10 Select the function '**Standardization run for rear spoiler**' and press •F12" ('Next') to confirm your selection ⇒ *Standardisation run for rear spoiler*.



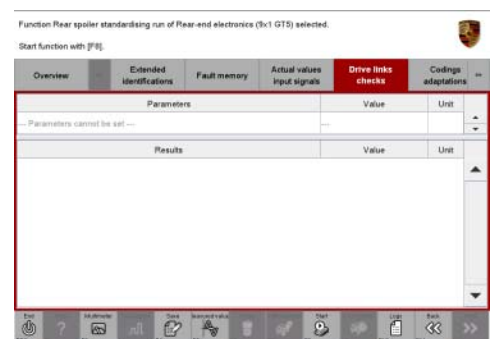
Standardisation run for rear spoiler

NOTICE

Electrically moved components

- Danger of limbs being trapped or severed
 - Risk of damage to components
- ⇒ Do not reach into the danger area.
- ⇒ Do not move components or tools into the danger area.
- ⇒ Keep third parties away from the danger area.

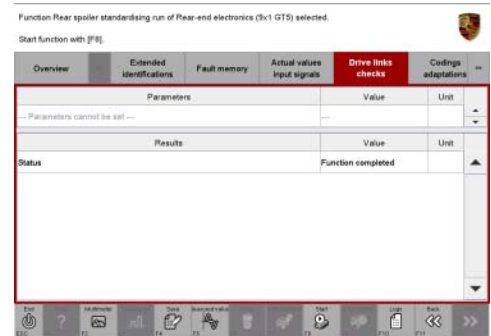
- 13.11 Press •F8" ('Start') to start the standardization run ⇒ *Starting standardisation run*. The rear spoiler moves **automatically** to both end positions and then returns to its original position.



Starting standardisation run

When the standardization run is complete, the message **"Function completed"** is displayed in the **'Status'** box on the PIWIS Tester display ⇒ *Standardization run successful.*

- 13.12 Press •F11" ('Back') to return to the start page of the **'Drive links/checks'** menu.
- 13.13 Select the **'Overview'** menu and press •F11" ('Back') to return to the control unit selection screen.



Standardization run successful

- 14 Bleed the high-pressure side of the fuel system using the PIWIS Tester ⇒ *Workshop Manual '200107 Bleeding fuel system on high-pressure side - First start function'.*
- 15 **For vehicles with Lane Change Assist (I-no. 457):**
Calibrate control unit for Lane Change Assist ⇒ *Workshop Manual '917025 Calibrating control unit for Lane Change Assist'.*
- 16 **For vehicles with ParkAssist incl. reversing camera (I-no. 638):**
Calibrate reversing camera ⇒ *Workshop Manual '914325 Calibrating reversing camera'.*
- 17 Read out and erase the fault memory ⇒ *Workshop Manual '033500 Fault memory for on-board diagnosis'.*



Information

If control units are found to have faults that are **not** related to this workshop campaign, these must be **found** and **corrected** separately. This work **cannot** be invoiced under the workshop campaign number.

- 18 Switch off the ignition.
- 19 Disconnect the PIWIS Tester from the vehicle.
- 20 Switch off and disconnect the battery charger.
- 21 Remove the vehicle from the lifting platform.
- 22 Enter the campaign in the Warranty and Maintenance booklet.

- References:
- ⇒ *Workshop Manual '033500 Fault memory for on-board diagnosis'*
 - ⇒ *Workshop Manual '100109 Lowering the engine'*
 - ⇒ *Workshop Manual '198119 Removing and installing engine-compartment blower'*
 - ⇒ *Workshop Manual '2X00IN Work instructions after disconnecting the battery'*
 - ⇒ *Workshop Manual '200107 Bleeding fuel system on high-pressure side - First start function'*
 - ⇒ *Workshop Manual '211019 Removing and installing air guide for charge-air cooling'*

- ⇒ Workshop Manual '214119 Removing and installing pressure pipe'
- ⇒ Workshop Manual '242519 Removing and installing air cleaner housing'
- ⇒ Workshop Manual '261519 Removing and installing retaining frame for charge-air cooler and heat shield'
- ⇒ Workshop Manual '4X00IN Lifting the vehicle'
- ⇒ Workshop Manual '420619 Removing and installing rear-axle cross member'
- ⇒ Workshop Manual '421319 Removing and installing strut'
- ⇒ Workshop Manual '421419 Removing and installing support plate'
- ⇒ Workshop Manual '519419 Removing and installing cover for rear underbody'
- ⇒ Workshop Manual '6101IN Convertible-top service position (Cabriolet)'
- ⇒ Workshop Manual '6101IN05 Convertible-top service position'
- ⇒ Workshop Manual '635519 Removing and installing rear apron'
- ⇒ Workshop Manual '66581905 Removing and installing rear spoiler'
- ⇒ Workshop Manual '914325 Calibrating reversing camera'
- ⇒ Workshop Manual '917025 Calibrating control unit for Lane Change Assist'
- ⇒ Workshop Manual '943119 Removing and installing tail light'

Warranty processing

Scope 1: Replacing fastening screws for fuel collection pipes

Body shape and vehicle equipment:

- **Coupé**
- **without** Lane Change Assist
- **without** ParkAssist incl. reversing camera

Working time:

Replacing fastening screws for fuel collection pipes

Labor time: **375 TU**

Includes:

- Raising and lowering the vehicle
- Reducing fuel pressure
- Disconnecting and connecting battery
- Removing and installing engine-compartment blower
- Removing and installing tail lights
- Removing and installing rear apron
- Removing and installing rear spoiler
- Removing and installing air guide for charge-air cooling
- Removing and installing pressure pipes
- Removing and installing air cleaner housing
- Removing and installing retaining frame for charge-air cooler
- Removing and installing diagonal braces
- Removing and installing rear axle carrier with lower trailing arms
- Loosening and securing engine
- Connecting and disconnecting battery charger
- Connecting and disconnecting PIWIS Tester

	Performing standardization run for rear spoiler	
	Bleeding fuel high-pressure system	
	Reading out and erasing fault memory	
Without:	Calibrating Lane Change Assist	
	Calibrating reversing camera	
Parts required:		
000 043 306 00	Torx screw, BM 6 x 85 – Fuel collection pipe	4 ea.
999 072 875 01	Hexagon-head bolt, M12 x 1.5 x 95 – Rear axle carrier, outer	2 ea.
999 072 931 01	Hexagon-head bolt, M12 x 1.5 x 110 – Rear axle carrier, inner	2 ea.
999 072 930 01	Hexagon-head bolt, M12 x 1.5 x 105 – Lower trailing arm to wheel carrier	2 ea.
999 084 445 01	Lock nut, M12 x 1.5 – Lower trailing arm to wheel carrier	2 ea.
999 072 869 01	Hexagon-head bolt, M12 x 1.5 x 45 – Rear diagonal brace	2 ea.
999 073 443 01	Combination screw, M12 x 1.5 x 40 – Front diagonal brace	2 ea.
N 908 484 05	Hexagon nut, M12 x 1.5 – Engine carrier to engine mount	2 ea.
999 512 707 00	Hose clamp, 9.6 - 11.3 mm – Vacuum lines	4 ea.
999 512 498 00	Hose clamp, 13.1 - 15.3 mm – Vacuum lines	2 ea.
Also required for vehicles without PASM/PDCC:		
999 084 123 09	Hexagon nut, M10 – Anti-roll bar to connecting link	2 ea.
Also required for vehicles with PASM/PDCC (I-no. 031/352):		
999 084 132 01	Hexagon nut, M12 – Anti-roll bar to actuator	2 ea.
⇒ Damage Code AH01 099 000 2		

Scope 2: Replacing fastening screws for fuel collection pipes

Body shape and vehicle equipment:

- **Cabriolet**
- **without** Lane Change Assist
- **without** ParkAssist incl. reversing camera

Working time:

Replacing fastening screws for fuel collection pipes

Labor time: **461 TU**

Includes: Raising and lowering the vehicle
 Moving convertible top into service position
 Reducing fuel pressure
 Disconnecting and connecting battery
 Removing and installing engine-compartment blower
 Removing and installing tail lights
 Removing and installing rear apron
 Removing and installing rear spoiler
 Removing and installing air guide for charge-air cooling
 Removing and installing pressure pipes
 Removing and installing air cleaner housing
 Removing and installing retaining frame for charge-air cooler
 Removing and installing support plate
 Removing and installing diagonal braces
 Removing and installing rear axle carrier with lower trailing arms
 Loosening and securing engine
 Connecting and disconnecting battery charger
 Connecting and disconnecting PIWIS Tester
 Performing standardization run for rear spoiler
 Bleeding fuel high-pressure system
 Reading out and erasing fault memory

Without: Calibrating Lane Change Assist
 Calibrating reversing camera

Parts required:

000 043 306 00	Torx screw, BM 6 x 85 – Fuel collection pipe	4 ea.
999 072 875 01	Hexagon-head bolt, M12 x 1.5 x 95 – Rear axle carrier, outer	2 ea.
999 072 931 01	Hexagon-head bolt, M12 x 1.5 x 110 – Rear axle carrier, inner	2 ea.
999 072 930 01	Hexagon-head bolt, M12 x 1.5 x 105 – Lower trailing arm to wheel carrier	2 ea.

999 084 445 01	Lock nut, M12 x 1.5 – Lower trailing arm to wheel carrier	2 ea.
999 072 869 01	Hexagon-head bolt, M12 x 1.5 x 45 – Rear diagonal brace	2 ea.
999 073 443 01	Combination screw, M12 x 1.5 x 40 – Front diagonal brace	2 ea.
N 908 484 05	Hexagon nut, M12 x 1.5 – Engine carrier to engine mount	2 ea.
999 512 707 00	Hose clamp, 9.6 - 11.3 mm – Vacuum lines	4 ea.
999 512 498 00	Hose clamp, 13.1 - 15.3 mm – Vacuum lines	2 ea.
Also required for vehicles without PASM/PDCC:		
999 084 123 09	Hexagon nut, M10 – Anti-roll bar to connecting link	2 ea.
Also required for vehicles with PASM/PDCC (I-no. 031/352):		
999 084 132 01	Hexagon nut, M12 – Anti-roll bar to actuator	2 ea.
⇒ Damage Code AH01 099 000 2		

Scope 3: **Replacing fastening screws for fuel collection pipes**

Body shape and vehicle equipment:

- **Targa**
- **without** Lane Change Assist
- **without** ParkAssist incl. reversing camera

Working time:

Replacing fastening screws for fuel collection pipes

Labor time: **472 TU**

- Includes:
- Raising and lowering the vehicle
 - Moving convertible top into service position
 - Reducing fuel pressure
 - Disconnecting and connecting battery
 - Removing and installing engine-compartment blower
 - Removing and installing tail lights
 - Removing and installing rear apron
 - Removing and installing rear spoiler

Removing and installing air guide for charge-air cooling
 Removing and installing pressure pipes
 Removing and installing air cleaner housing
 Removing and installing retaining frame for charge-air cooler
 Removing and installing support plate
 Removing and installing diagonal braces
 Removing and installing rear axle carrier with lower trailing arms
 Loosening and securing engine
 Connecting and disconnecting battery charger
 Connecting and disconnecting PIWIS Tester
 Performing standardization run for rear spoiler
 Bleeding fuel high-pressure system
 Reading out and erasing fault memory
 Without: Calibrating Lane Change Assist
 Calibrating reversing camera

Parts required:

000 043 306 00	Torx screw, BM 6 x 85 – Fuel collection pipe	4 ea.
999 072 875 01	Hexagon-head bolt, M12 x 1.5 x 95 – Rear axle carrier, outer	2 ea.
999 072 931 01	Hexagon-head bolt, M12 x 1.5 x 110 – Rear axle carrier, inner	2 ea.
999 072 930 01	Hexagon-head bolt, M12 x 1.5 x 105 – Lower trailing arm to wheel carrier	2 ea.
999 084 445 01	Lock nut, M12 x 1.5 – Lower trailing arm to wheel carrier	2 ea.
999 072 869 01	Hexagon-head bolt, M12 x 1.5 x 45 – Rear diagonal brace	2 ea.
999 073 443 01	Combination screw, M12 x 1.5 x 40 – Front diagonal brace	2 ea.
N 908 484 05	Hexagon nut, M12 x 1.5 – Engine carrier to engine mount	2 ea.
999 512 707 00	Hose clamp, 9.6 - 11.3 mm – Vacuum lines	4 ea.
999 512 498 00	Hose clamp, 13.1 - 15.3 mm – Vacuum lines	2 ea.

Also required for vehicles without PASM/PDCC:

999 084 123 09	Hexagon nut, M10 – Anti-roll bar to connecting link	2 ea.
Also required for vehicles with PASM/PDCC (I-no. 031/352):		
999 084 132 01	Hexagon nut, M12 – Anti-roll bar to actuator	2 ea.
Materials required:		
AH010000001 *	Expendable items* Tie-wrap (2 ea.) approx. 4.0 mm wide, approx. 200 mm long	1 ea. (for warranty invoicing only*)
* The WWS Warranty system will automatically add into the “Miscellaneous item” section (sublet) of the claim after the claim has been submitted.		
⇒ Damage Code AH01 099 000 2		

Scope 4: **Replacing fastening screws for fuel collection pipes**

Body shape and vehicle equipment:

- **Coupé**
- **Lane Change Assist** (I-no. 457) **and/or** ParkAssist incl. **reversing camera** (I-no. 638)

Working time:	
Replacing fastening screws for fuel collection pipes	Labor time: 435 TU
Includes:	<ul style="list-style-type: none"> Raising and lowering the vehicle Reducing fuel pressure Disconnecting and connecting battery Removing and installing engine-compartment blower Removing and installing tail lights Removing and installing rear apron Removing and installing rear spoiler Removing and installing air guide for charge-air cooling Removing and installing pressure pipes Removing and installing air cleaner housing Removing and installing retaining frame for charge-air cooler Removing and installing diagonal braces Removing and installing rear axle carrier with lower trailing arms Loosening and securing engine Connecting and disconnecting battery charger

Connecting and disconnecting PIWIS Tester
 Performing standardization run for rear spoiler
 Bleeding fuel high-pressure system
 Reading out and erasing fault memory
 Calibrating Lane Change Assist
 Calibrating reversing camera

Parts required:

000 043 306 00	Torx screw, BM 6 x 85 – Fuel collection pipe	4 ea.
999 072 875 01	Hexagon-head bolt, M12 x 1.5 x 95 – Rear axle carrier, outer	2 ea.
999 072 931 01	Hexagon-head bolt, M12 x 1.5 x 110 – Rear axle carrier, inner	2 ea.
999 072 930 01	Hexagon-head bolt, M12 x 1.5 x 105 – Lower trailing arm to wheel carrier	2 ea.
999 084 445 01	Lock nut, M12 x 1.5 – Lower trailing arm to wheel carrier	2 ea.
999 072 869 01	Hexagon-head bolt, M12 x 1.5 x 45 – Rear diagonal brace	2 ea.
999 073 443 01	Combination screw, M12 x 1.5 x 40 – Front diagonal brace	2 ea.
N 908 484 05	Hexagon nut, M12 x 1.5 – Engine carrier to engine mount	2 ea.
999 512 707 00	Hose clamp, 9.6 - 11.3 mm – Vacuum lines	4 ea.
999 512 498 00	Hose clamp, 13.1 - 15.3 mm – Vacuum lines	2 ea.

Also required for vehicles without PASM/PDCC:

999 084 123 09	Hexagon nut, M10 – Anti-roll bar to connecting link	2 ea.
----------------	--	-------

Also required for vehicles with PASM/PDCC (I-no. 031/352):

999 084 132 01	Hexagon nut, M12 – Anti-roll bar to actuator	2 ea.
----------------	---	-------

⇒ Damage Code AH01 099 000 2

Scope 5: **Replacing fastening screws for fuel collection pipes**

Body shape and vehicle equipment:

- **Cabriolet**
- **Lane Change Assist** (I-no. 457) **and/or** ParkAssist incl. **reversing camera** (I-no. 638)

Working time:

Replacing fastening screws for fuel collection pipes

Labor time: **521 TU**

- Includes:
- Raising and lowering the vehicle
 - Moving convertible top into service position
 - Reducing fuel pressure
 - Disconnecting and connecting battery
 - Removing and installing engine-compartment blower
 - Removing and installing tail lights
 - Removing and installing rear apron
 - Removing and installing rear spoiler
 - Removing and installing air guide for charge-air cooling
 - Removing and installing pressure pipes
 - Removing and installing air cleaner housing
 - Removing and installing retaining frame for charge-air cooler
 - Removing and installing support plate
 - Removing and installing diagonal braces
 - Removing and installing rear axle carrier with lower trailing arms
 - Loosening and securing engine
 - Connecting and disconnecting battery charger
 - Connecting and disconnecting PIWIS Tester
 - Performing standardization run for rear spoiler
 - Bleeding fuel high-pressure system
 - Reading out and erasing fault memory
 - Calibrating Lane Change Assist
 - Calibrating reversing camera

Parts required:

000 043 306 00	Torx screw, BM 6 x 85 – Fuel collection pipe	4 ea.
999 072 875 01	Hexagon-head bolt, M12 x 1.5 x 95 – Rear axle carrier, outer	2 ea.
999 072 931 01	Hexagon-head bolt, M12 x 1.5 x 110 – Rear axle carrier, inner	2 ea.
999 072 930 01	Hexagon-head bolt, M12 x 1.5 x 105 – Lower trailing arm to wheel carrier	2 ea.

999 084 445 01	Lock nut, M12 x 1.5 – Lower trailing arm to wheel carrier	2 ea.
999 072 869 01	Hexagon-head bolt, M12 x 1.5 x 45 – Rear diagonal brace	2 ea.
999 073 443 01	Combination screw, M12 x 1.5 x 40 – Front diagonal brace	2 ea.
N 908 484 05	Hexagon nut, M12 x 1.5 – Engine carrier to engine mount	2 ea.
999 512 707 00	Hose clamp, 9.6 - 11.3 mm – Vacuum lines	4 ea.
999 512 498 00	Hose clamp, 13.1 - 15.3 mm – Vacuum lines	2 ea.
Also required for vehicles without PASM/PDCC:		
999 084 123 09	Hexagon nut, M10 – Anti-roll bar to connecting link	2 ea.
Also required for vehicles with PASM/PDCC (I-no. 031/352):		
999 084 132 01	Hexagon nut, M12 – Anti-roll bar to actuator	2 ea.
⇒ Damage Code AH01 099 000 2		

Scope 6: **Replacing fastening screws for fuel collection pipes**

Body shape and vehicle equipment:

- **Targa**
- **Lane Change Assist** (I-no. 457) **and/or** ParkAssist incl. **reversing camera** (I-no. 638)

Working time:

Replacing fastening screws for fuel collection pipes

Labor time: **533 TU**

Includes:

- Raising and lowering the vehicle
- Moving convertible top into service position
- Reducing fuel pressure
- Disconnecting and connecting battery
- Removing and installing engine-compartment blower
- Removing and installing tail lights
- Removing and installing rear apron
- Removing and installing rear spoiler
- Removing and installing air guide for charge-air cooling

- Removing and installing pressure pipes
- Removing and installing air cleaner housing
- Removing and installing retaining frame for charge-air cooler
- Removing and installing support plate
- Removing and installing diagonal braces
- Removing and installing rear axle carrier with lower trailing arms
- Loosening and securing engine
- Connecting and disconnecting battery charger
- Connecting and disconnecting PIWIS Tester
- Performing standardization run for rear spoiler
- Bleeding fuel high-pressure system
- Reading out and erasing fault memory
- Calibrating Lane Change Assist
- Calibrating reversing camera

Parts required:

000 043 306 00	Torx screw, BM 6 x 85 – Fuel collection pipe	4 ea.
999 072 875 01	Hexagon-head bolt, M12 x 1.5 x 95 – Rear axle carrier, outer	2 ea.
999 072 931 01	Hexagon-head bolt, M12 x 1.5 x 110 – Rear axle carrier, inner	2 ea.
999 072 930 01	Hexagon-head bolt, M12 x 1.5 x 105 – Lower trailing arm to wheel carrier	2 ea.
999 084 445 01	Lock nut, M12 x 1.5 – Lower trailing arm to wheel carrier	2 ea.
999 072 869 01	Hexagon-head bolt, M12 x 1.5 x 45 – Rear diagonal brace	2 ea.
999 073 443 01	Combination screw, M12 x 1.5 x 40 – Front diagonal brace	2 ea.
N 908 484 05	Hexagon nut, M12 x 1.5 – Engine carrier to engine mount	2 ea.
999 512 707 00	Hose clamp, 9.6 - 11.3 mm – Vacuum lines	4 ea.
999 512 498 00	Hose clamp, 13.1 - 15.3 mm – Vacuum lines	2 ea.

Also required for vehicles without PASM/PDCC:

999 084 123 09	Hexagon nut, M10 – Anti-roll bar to connecting link	2 ea.
Also required for vehicles with PASM/PDCC (I-no. 031/352):		
999 084 132 01	Hexagon nut, M12 – Anti-roll bar to actuator	2 ea.
Materials required:		
AH010000001 *	Expendable items* Tie-wrap (2 ea.) approx. 4.0 mm wide, approx. 200 mm long	1 ea. (for warranty invoicing only*)
* The WWS Warranty system will automatically add into the “Miscellaneous item” section (sublet) of the claim after the claim has been submitted.		
⇒ Damage Code AH01 099 000 2		

Scope 11 - Checking engine number



Information

Vehicles with replacement engine installed

On vehicles in which a **replacement engine was installed** and the relevant **engine number was not documented**, we **cannot be sure** that the correct fastening screws were used. The engine number on these vehicles must first be checked.

A corresponding **list of the replacement engines affected by the campaign** is available for this purpose in the PPN portal.

If a **replacement engine affected** by this campaign was **installed** in the respective vehicle, the **campaign** must be **carried out** in accordance with the scope that is also assigned to the vehicle. If the respective **replacement engine is not affected**, **no further action** is required.

- Work Procedure: 1 Raise the vehicle on a lifting platform ⇒ *Workshop Manual '4X00IN Lifting the vehicle'*.
- 2 Read off the engine number on the crankcase and write it down ⇒ *Workshop Manual '1001IN Position and marking of engine number'*.
- 3 Check the engine number using the list provided in the PPN portal.
- The **engine number** of the installed engine **is included in the list of engines**: The **fastening screws** for the fuel collection pipes must be **replaced**. Continue with ⇒ *Technical Information 'AH0100 AH01 Recall campaign - Replacing fastening screws for fuel collection pipes'*.

- The **engine number** that was read off is **not** included in the list: The installed engine is **not affected**. Lower the vehicle and remove it from the lifting platform. **End of action required**. For invoicing, see Scope 11.

Scope: **Scope 11 – Checking engine number**



Information

Scope 11 must only be invoiced if the installed replacement engine is **not** affected by this campaign and **no fastening screws must be replaced**.

Working time:

Checking engine number of the installed replacement engine
Includes: Raising and lowering the vehicle

Labor time: **24 TU**

⇒ **Damage Code AH01 099 000 1**

Important Notice: Technical Bulletins issued by Porsche Cars North America, Inc. are intended only for use by professional automotive technicians who have attended Porsche service training courses. They are written to inform those technicians of conditions that may occur on some Porsche vehicles, or to provide information that could assist in the proper servicing of a vehicle. Porsche special tools may be necessary in order to perform certain operations identified in these bulletins. Use of tools and procedures other than those Porsche recommends in these bulletins may be detrimental to the safe operation of your vehicle, and may endanger the people working on it. Properly trained Porsche technicians have the equipment, tools, safety instructions, and know-how to do the job properly and safely. If a particular condition is described, do not assume that the bulletin applies to your vehicle, or that your vehicle will have that condition. See your authorized Porsche Dealer for the latest information about whether a particular technical bulletin applies to your vehicle. Part numbers listed in these bulletins are for reference only. Always check with your authorized Porsche dealer to verify the current and correct part numbers. The work procedures updated electronically in the Porsche PIWIS diagnostic and testing device take precedence and, in the event of a discrepancy, the work procedures in the PIWIS Tester are the ones that must be followed.

© Porsche Cars North America, Inc.

Dealership	Service Manager	Shop Foreman	Service Technician
Distribution	Asst. Manager	Warranty Admin.	Service Technician
Routing			

Dr. Ing. h.c. F. Porsche AG is the owner of numerous trademarks, both registered and unregistered, including without limitation the Porsche Crest®, Porsche®, Boxster®, Carrera®, Cayenne®, Cayman®, Macan®, Panamera®, Speedster®, Spyder®, Tiptronic®, VarioCam®, PCM®, PDK®, 911®, RS®, 4S®, 718®, 918 Spyder®, FOUR UNCOMPROMISED®, and the model numbers and distinctive shapes of the Porsche automobiles such as, the federally registered 911 and Boxster automobiles. The third party trademarks contained herein are the properties of their respective owners. Porsche Cars North America, Inc. believes the specifications to be correct at the time of printing. However, specifications, standard equipment and options are subject to change without notice. Some options may be unavailable when a car is built. Some vehicles may be shown with non-U.S. equipment. Please ask your authorized Porsche dealer for advice concerning the current availability of options and verify the optional equipment that you ordered. Porsche recommends seat belt usage and observance of traffic laws at all times.

Printed in the USA