

Technical Service Bulletin



94 Headlight switch is loose or falls into dashboard

94 16 75 2024896/2 March 15, 2016. Supersedes Technical Service Bulletin Group 70 number 10-21 dated December 6, 2010 for reasons listed below.

Model(s)	Year	VIN Range	Vehicle-Specific Equipment
Q7	2007 - 2015	All	Not Applicable

Condition

REVISION HISTORY		
Revision	Date	Purpose
2	-	Revised header data (Added model years)
1	12/6/2010	Initial publication

The headlight switch holder is broken, which causes the headlight switch assembly to be loose or fall into the dashboard.

Technical Background

The rivets that hold the headlight switch holder in the dashboard can break if the headlight switch is bumped (by driver entering vehicle).

Production Solution

Not applicable.

Service

Repair the dashboard for the headlight switch holder using the following instructions. The holder and headlight switch assembly do not need to be replaced unless they are damaged.

1. Remove the cover from the left side of the dashboard.
2. Remove the left panel vent according to the repair manual.

Technical Service Bulletin



3. Disconnect the headlight switch assembly and remove it (Figure 1).



Figure 1. The dashboard, ready for the repair.

The broken rivets are shown in the images at right. The damaged areas are circled in yellow (Figure 2 and Figure 3).



Figure 2. The broken plastic rivets, viewed from above.

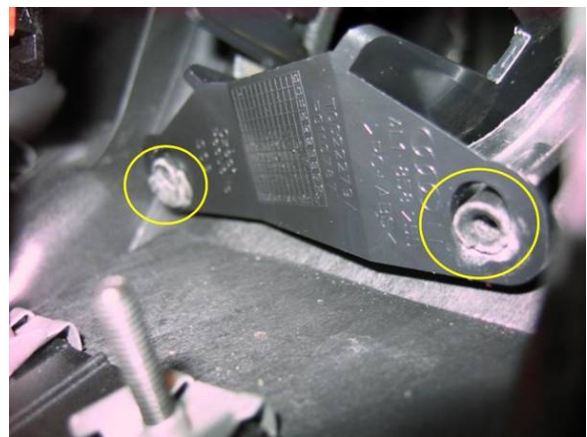


Figure 3. The broken plastic rivets, viewed from below.

4. Apply 2K plastic bonder (part number D 180KU1A1) on the fastening points as shown (Figure 4 and Figure 5). The bead should be approximately 5 mm in diameter.



Figure 4. Attachment points.



Figure 5. Attachment points after applying bonder.

5. Reattach the holder to its original position in the dashboard.
6. Once installed, apply additional bonder over the four fastening points to thicken the bond (Figure 6).



Figure 6. Applying additional bonder to four fastening points on holder.

Technical Service Bulletin



7. Apply additional bonder to the top of the holder from the panel vent access hole. This will provide additional strength to the repair. (Figure 7 and Figure 8.)



Figure 7. Applying additional bonder to the top of holder.



Figure 8. Additional bonder applied to top of holder.

8. Allow bonder to set before reinstalling parts.

Technical Service Bulletin



Warranty



Tip: This bulletin only covers the cost of the repair to the dashboard and not the replacement cost for the damaged components.

Claim Type:	Use applicable claim type. If vehicle is outside any warranty, this Technical Service Bulletin is informational only.		
Service Number:	7018		
Damage Code:	0018		
Labor Operations:	Headlight switch holder repair	7018 1999	70 TU
Diagnostic Time:	GFF	No allowance	0 TU
	Road test prior to service procedure	No allowance	0 TU
	Road test after service procedure	No allowance	0 TU
	Technical diagnosis at dealer's discretion. (Refer to Section 2.2.1.2 and Audi Warranty Online for DADP allowance details.)		
Claim Comment:	As per TSB #2024896/2		

All warranty claims submitted for payment must be in accordance with the *Audi Warranty Policies and Procedures Manual*. Claims are subject to review or audit by Audi Warranty.

Required Parts and Tools

Part Number	Part Description	Quantity
VAS 5155	Hand cartridge gun ASE 435 022 00 000	1
D 180KU1A1	2K plastic bonder	0.5

Additional Information

All parts and service references provided in this TSB (2024896) are subject to change and/or removal. Always check with your Parts Department and service manuals for the latest information.