



Technical News 159
October 2014
Strictly Confidential

Contents		
Item	Description	Model Affected
Item 1.	Piston and Piston Top Ring	Daytona 675 from VIN 564948, Daytona 675 with ABS from VIN 564948 and Daytona 675 R with ABS from VIN 564948
Item 2.	Alternator Rotor Retaining Bolt	Speed Triple 1050, Speed Triple 1050 with ABS, Speed Triple 1050 SE with ABS, Speed Triple 1050 R, Speed Triple 1050 R with ABS, Sprint GT 1050 with ABS, Sprint ST 1050, Sprint ST 1050 with ABS, Tiger 1050, Tiger 1050 with ABS and Tiger Sport
Item 3.	Rear Brake Hose Guide	Tiger Explorer, Tiger Explorer with Spoked Wheels, Tiger Explorer XC, Trophy and Trophy SE
Item 4.	Auxiliary Lights	Rocket III Touring with ABS - Brazil, Canada and USA Markets only
Item 5.	Headlight Spares	Street Triple and Street Triple R both from VIN 560477, Speed Triple 1050 from VIN 461332 and Speed Triple 1050 R
Item 6.	Gear Selector Drum and Neutral Light Switch	Speed Triple 1050, Speed Triple 1050 with ABS, Speed Triple 1050 SE with ABS, Speed Triple 1050 R, Sprint GT, Sprint ST, Sprint ST with ABS, Tiger 1050, Tiger 1050 with ABS and Tiger Sport
Item 7.	Pulser Ring Fixings	Speed Triple 1050 cc All Models with ABS from VIN 670040
Item 8.	Side Stand Fixing	Trophy and Trophy SE
Item 9.	Side Stand Fixing	Tiger Explorer and Tiger Explorer XC from VIN 670390
Item 10.	Battery Terminal Cover	Tiger Sport
Item 11.	Heated Grip Fixings	Sprint GT from VIN 661205
Item 12.	Headstock Bearing Adjustment	Street Triple and Street Triple R from VIN 560477
Item 13.	Front and Rear Direction Indicator Fixings	Thunderbird Commander and Thunderbird LT
Item 14.	Swinging Arm	Thunderbird, Thunderbird with ABS, Thunderbird Storm and Thunderbird Storm with ABS
Item 15.	Throttle Linkage Cleaning - Part of the Scheduled Maintenance	Tiger 800, Tiger 800 with ABS, Tiger 800XC and Tiger 800XC with ABS
Item 16.	Headlight Label	All Models

Item 17.	Clutch Lifter Piece	All Rocket III Models
Item 18.	Rear Brake Caliper Bleed Nipple	Daytona 675 from VIN 564948 and Street Triple from VIN 560477
Item 19.	Owner's Handbook - Japanese Market Only	Speed Triple 1050, Speed Triple 1050 with ABS, Tiger 1050 and Tiger Sport

Item 1.

Description: Piston and Piston Top Ring

Models affected: Daytona 675 from VIN 564948, Daytona 675 with ABS from VIN 564948 and Daytona 675 R with ABS from VIN 564948

A new piston and piston top ring has been introduced to the above models from engine number 678753 and is retrofittable. When fitting a new piston, ensure the latest condition of the piston top ring is fitted to the anodised piston.

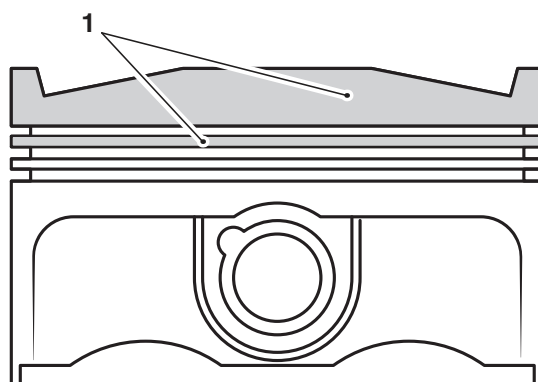
The differences between the original condition components and the latest condition are as follows:

Piston

The latest condition piston has its crown anodised down to the start of the groove for the second piston ring.

The anodised area of the piston can be identified by its grey colour, as shown in the illustration below.

Do not fit the original condition top ring to the new condition piston, only fit the latest condition top ring.



capf_1

1. Grey anodised area

Piston Top Ring

The latest condition piston top ring is silver in colour and the markings on the ring are the same as the original top ring.

Do not fit the new condition top ring to an original condition piston.

The original piston top ring is available as a spares item for the original condition piston only.

All Models

The removal and installation of the piston and piston rings are as described in the Service Manual.

When replacing parts always refer to the EPC.

Please mark your copy of the Service Manual with this information.

Item 2.

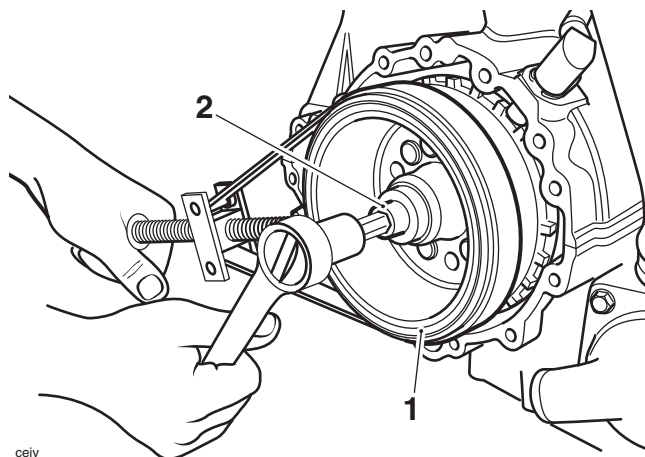
Description: Alternator Rotor Retaining Bolt

Models affected: Speed Triple 1050, Speed Triple 1050 with ABS, Speed Triple 1050 SE with ABS, Speed Triple 1050 R, Speed Triple 1050 R with ABS, Sprint GT 1050 with ABS, Sprint ST 1050, Sprint ST 1050 with ABS, Tiger 1050, Tiger 1050 with ABS and Tiger Sport

The torque figure for the alternator rotor retaining bolt has changed to **120 Nm** on the above models.

Note:

- **Models already in service need not be retightened unless the bolt has been loosened or removed.**



1. Alternator rotor
2. Bolt

Please mark your copy of the Service Manual with this information.

Item 3.

Description: Rear Brake Hose Guide

Models affected: Tiger Explorer, Tiger Explorer with Spoked Wheels, Tiger Explorer XC, Trophy and Trophy SE

New fixings securing the rear brake hose guide to the rear suspension torque arm have been introduced on the above models from VIN 675015 and are retrofittable.

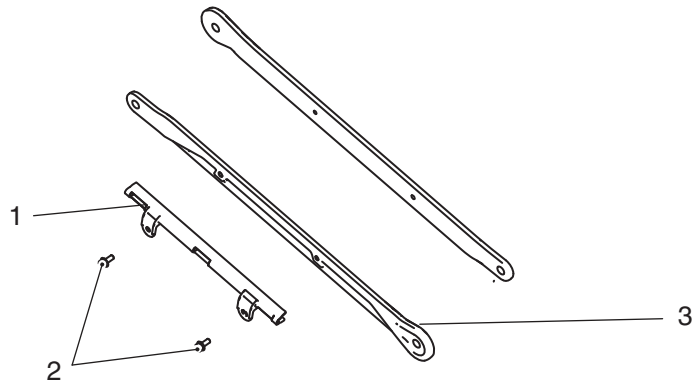
The torque figure for these fixings has also changed as shown in the table below.

Rear Suspension

Application	Torque (Nm)	Notes
Rear brake hose guide	3	

Note:

- **Models already in service need not be retightened unless the fixings have been loosened or removed.**



1. Rear brake hose guide
2. Fixings
3. Torque arm

Please mark your copy of the Service Manual with this information.

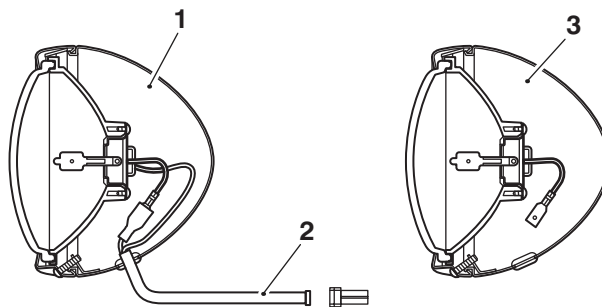
Item 4.

Description: Auxiliary Lights

Models affected: Rocket III Touring with ABS - Brazil, Canada and USA Markets only

New auxiliary lights, auxiliary light sub harness and light bar have been introduced to the above model from VIN 674509. The auxiliary lights and auxiliary light sub harness are not retrofittable. The light bar is retrofittable.

The new condition auxiliary light has a fly lead fitted as shown below.



- circ
1. New condition auxiliary light
 2. Fly lead
 3. Original condition auxiliary light

When replacing the auxiliary lights or the bulbs, refer to the EPC.

Please mark your copy of the Service Manual and Owner's Handbook with this information.

Item 5.

Description: Headlight Spares

Models affected: Street Triple and Street Triple R both from VIN 560477, Speed Triple 1050 from VIN 461332 and Speed Triple 1050 R

Triumph Genuine Parts Department have released the following left and right hand headlight components as spares for the above models:

Headlight Reflector Assembly

Model	Component Description	Part Number
Street Triple and Street Triple R both from VIN 560477, Speed Triple 1050 with ABS and Speed Triple 1050 R with ABS	Reflector assembly, left hand	T2701578
	Reflector assembly, right hand	T2701579

Single Headlight Unit

Model	Component Description	Part Number
Street Triple and Street Triple R both from VIN 560477, Speed Triple 1050 with ABS and Speed Triple 1050 R with ABS	Headlight, symmetrical dip, left hand	T2701582
	Headlight, symmetrical dip, right hand	T2701583

When replacing the headlight reflector only, the following items must be retained for reuse:

- Headlight sub harness
- Headlight bulb
- Position light bulb
- Headlight bulb rubber cover
- All fixings.

When replacing one of the headlight units, the following items must be retained for reuse:

- Headlight sub harness
- Headlight mounting nut, bolt and washer.

To replace the reflector assembly or the headlight unit, follow the procedures described below.

Headlight Reflector Assembly

Removal

1. Disconnect the battery, as described in the relevant Service Manual.
2. Remove the headlight reflector assembly as described in Chapter 17, Headlight Bulb Replacement in the relevant Service Manual.

Installation

1. Fit the following items from the original headlight reflector to the new one:
 - Position light bulb
 - Headlight bulb
 - Headlight bulb rubber cover
 - Headlight sub-harness.
2. Fit the headlight reflector assembly to the headlight bowl as described in Chapter 17, Headlight Bulb Replacement in the relevant Service Manual.
3. Check and, if necessary, adjust the headlight alignment, as described in the relevant Service Manual. Tighten the headlight mounting nut to **30 Nm**.

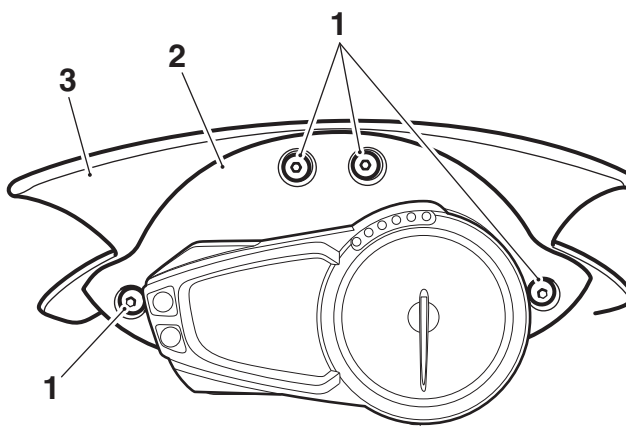
Headlight Unit

Removal

1. Disconnect the battery, as described in the relevant Service Manual.

Models Fitted with a Flyscreen

2. Release the four fixings securing the flyscreen to its infill panel.



cgpc_1

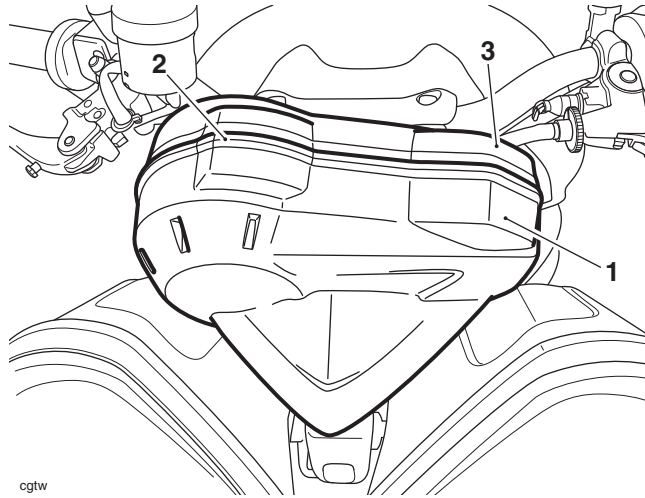
1. Fixings
2. Infill panel
3. Flyscreen

3. Slide the flyscreen forward to remove from the motorcycle.

Models not Fitted with a Flyscreen

Note:

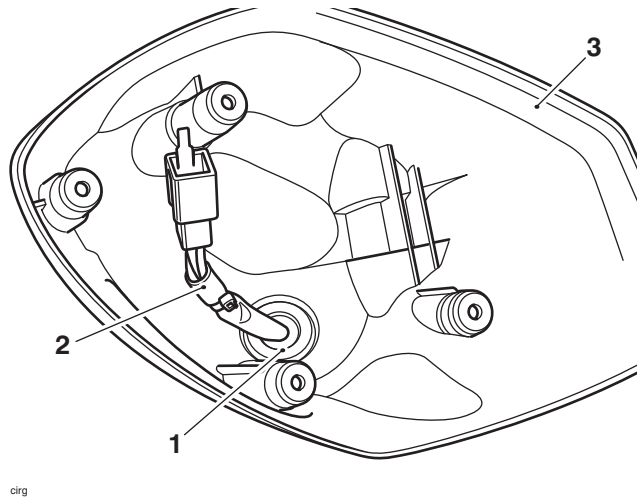
- **The cover is held in place by bayonet type fixings. Gently pull on the cover to release it.**
4. To gain access to the headlight mounting bolt, remove the cover and gasket attached to the rear of the instruments.



1. Cover
2. Gasket
3. Instruments

All Models

5. Remove the headlight reflector assembly as described in Chapter 17, Headlight Bulb Replacement in the relevant Service Manual.
6. Release the rubber grommet from the headlight bowl and feed the harness out of the headlight bowl.

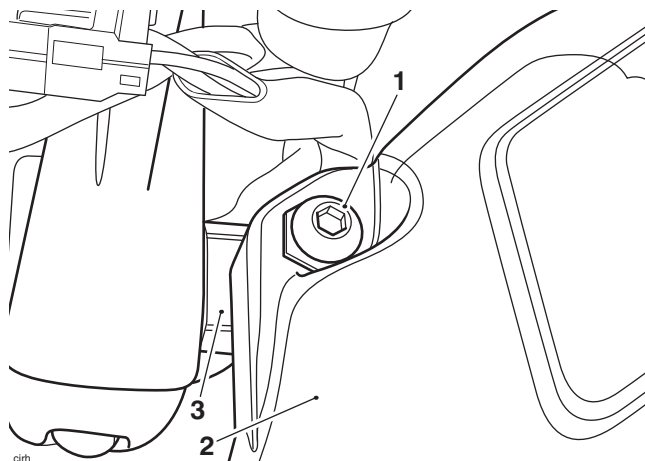


1. Rubber grommet
2. Harness
3. Headlight bowl

Note:

- **Note the position of a washer between the headlight bowl and the headlight pivot for installation.**

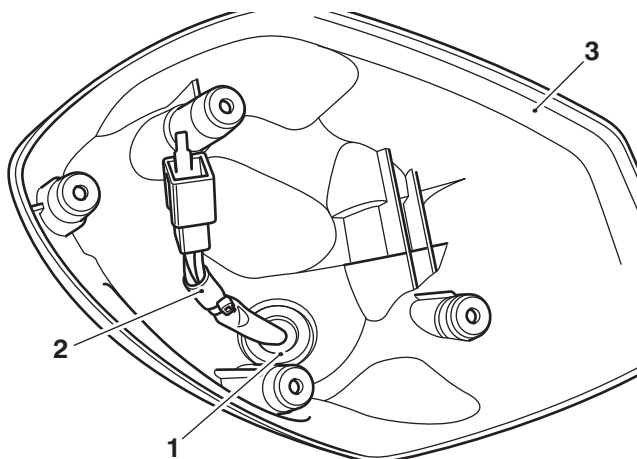
- Remove the headlight mounting nut and bolt, remove the headlight bowl and collect the washer.



- Bolt**
- Headlight bowl**
- Headlight pivot**

Installation

- While supporting the new headlight, remove the fixings and remove the headlight from its bowl.
- Position the headlight bowl to the motorcycle, feed the headlight harness into the bowl and secure the rubber grommet to the headlight bowl.



- Rubber grommet**
- Harness**
- Headlight bowl**

- Fit the headlight bowl to the headlight pivot and secure in position with the mounting nut, bolt and washer, ensure the washer is positioned as noted for removal. Do not fully tighten at this stage.
- Fit the headlight sub harness from the original headlight to the new headlight reflector assembly.
- Fit the headlight reflector assembly to the headlight bowl as described in Chapter 17, Headlight Bulb Replacement in the relevant Service Manual.
- Check and, if necessary, adjust the headlight alignment, as described in the relevant Service Manual. Tighten the headlight mounting nut to **30 Nm**.
- For models fitted with a flyscreen only:** Position the flyscreen to its infill panel and tighten the fixings to **3 Nm**.
- For models not fitted with a flyscreen:** Refit the cover and gasket to the rear of the instruments.

Please mark your copy of the Service Manual with this information.

Item 6.

Description: Gear Selector Drum and Neutral Light Switch

Models affected: Speed Triple 1050, Speed Triple 1050 with ABS, Speed Triple 1050 SE with ABS, Speed Triple 1050 R, Sprint GT, Sprint ST, Sprint ST with ABS, Tiger 1050, Tiger 1050 with ABS and Tiger Sport

Since June 2013 four Technical News items have been released for the various components related to the gear neutral light on the above models from engine number 536533 to 644216.

The purpose of this Technical News item is to replace the four Technical News items listed below by bringing them together for clarity.

- Technical News 147, Item 14, Dated June 2013 - Neutral Switch Washer
- Technical News 148, Item 13, Dated August 2013 - Selector Drum and Neutral Light Switch Parts Kits
- Technical News 152, Item 2, Dated December 2013 - Neutral Light Switch Parts Kits
- Technical News 156, Item 7, Dated April 2014 - Gear Selector Drum.

From Engine Number 644217

Items related to the gear neutral light switch and gear selector drum from engine number 644217, can be replaced like for like. Always refer to the EPC.

Neutral Light Switch Washer from Engine Number 536533

The neutral light may not illuminate when neutral has been selected and the engine is at a very high temperature on the following 1050 engines:

- Speed Triple 1050, Speed Triple 1050 R, Sprint GT, Sprint ST, and Tiger 1050 with ABS all from engine number 536533
- Tiger Sport from engine number 569553.

Should this concern be encountered, replace the 1.5 mm (silver) washer for the neutral switch with the 0.9 mm (black) washer part number T3555066.

For the installation of the new neutral light switch washer refer to Replace the Neutral Light Switch on page [11](#).

Gear Selector Drum and Neutral Light Switch from Engine Number 539023

A gear selector drum parts kit (part number T1190977) and a neutral light switch parts kit (part number T1190988) have been released for the following 1050 engines:

- Speed Triple 1050, Speed Triple 1050 R both from engine number 539023
- Sprint GT, Tiger 1050 with ABS and Tiger Sport all from engine number 569533.

If the gear selector drum requires replacing, the neutral light switch will require adjustment. To facilitate this the parts kit T1190977 will consist of the items shown in the following table. For the installation of the new gear selector drum, refer to Fitting the Selector Drum Parts Kit on page [12](#).

If the neutral light switch requires replacing, the parts kit will consist of the items listed in the following table. For the installation of the new neutral light switch, refer to Replace the Neutral Light Switch on page [11](#).

Parts Kit Contents

Parts Kit and Number	Contents	Item Part Numbers
Gear Selector Drum T1190977	Selector Drum Assembly	T1191050
	Washer 1.5 mm (silver)	T3555044
	Washer 0.9 mm (black)	T3555066
Neutral Light Switch T1190988	Neutral Light Switch	T1190494
	Washer 1.5 mm (silver)	T3555044
	Washer 0.9 mm (black)	T3555066

Gear Neutral Light Switch from Engine Number 597931

A gear neutral switch parts kit (part number T1190904) has been introduced for the following models:

- Speed Triple 1050, Speed Triple 1050 R, Sprint GT, Tiger 1050 with ABS and Tiger Sport all from engine number 597931
- For models with engines up to engine number 597930, refer to Gear Selector Drum and Neutral Light Switch From Engine Number 539023 on page 9.

The parts kit consists of the following items.

Parts Kit and Number	Contents	Item Part Numbers
Neutral Light Switch T1190904	Neutral Light Switch	T1190494
	Washer 1.5 mm (silver)	T3555044

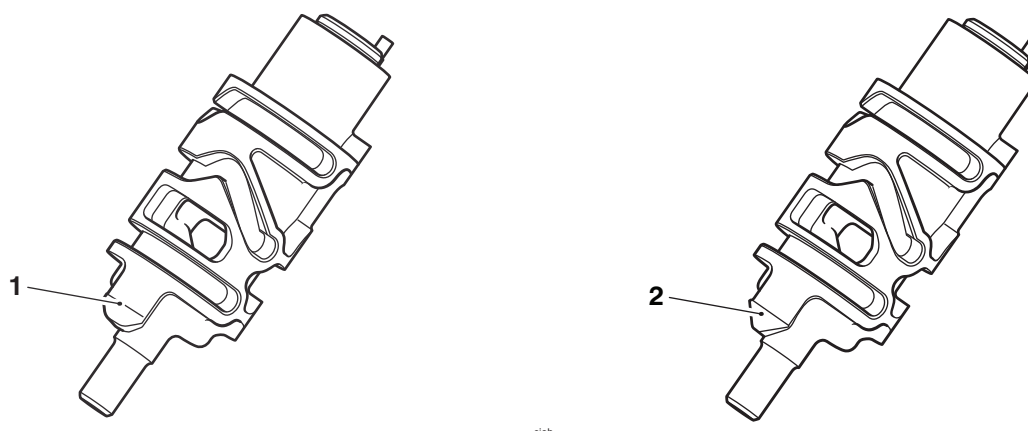
For the installation of the parts kit, refer to Replace the Neutral Light Switch on page 11.

Gear Selector Drum from Engine Number 644217

A new gear selector drum has been introduced to the following 1050 engines from engine number 644217 built at factory 5 and from engine number 665820 for engines built at factory 2:

- Sprint GT 1050, Spring GT 1050 with ABS, Sprint GT 1050, Speed Triple 1050, Speed Triple 1050 with ABS, Speed Triple 1050 R, Speed Triple 1050 SE with ABS, Tiger 1050 with ABS, Tiger 1050 and Tiger Sport.

The difference between the original condition and the new condition selector drum is the neutral switch feature as shown in the illustration below.



1. Neutral switch feature (original condition)
2. Neutral switch feature (new condition)

The new condition gear selector drum can be fitted to earlier models down to engine number 536522 but a new washer must be fitted to the neutral light switch at the same time. To facilitate this a parts kit (part number T1192233) is available.

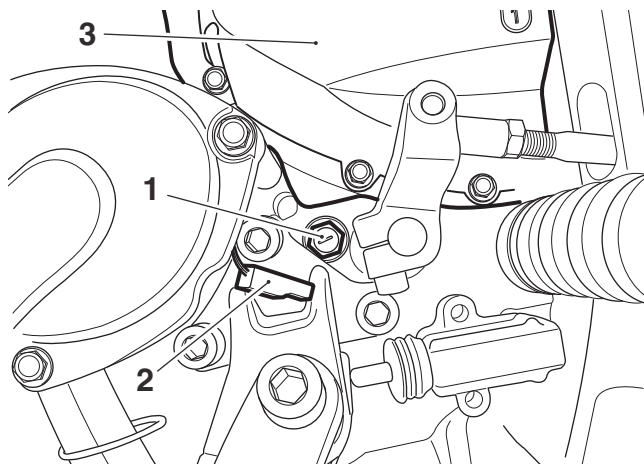
For the installation of the new gear selector drum, refer to Fitting the Selector Drum Parts Kit on page 12.

Replace the Neutral Light Switch

1. Disconnect the battery as described in the relevant Service Manual for each model.

Note:

- **The neutral light switch is located below the sprocket cover on the left hand side of the motorcycle.**
2. Disconnect the neutral light switch from the main harness.
 3. Remove the neutral light switch and discard the washer.



1. Neutral light switch (Speed Triple shown)
2. Neutral light switch connection
3. Sprocket cover

Note:

- **For spares kits with two washers, fit the 1.5 mm washer (silver) first.**
4. Fit the new washer to original/new neutral light switch.
 5. Fit the neutral light switch and tighten to **10 Nm**.
 6. Reconnect the battery as described in the relevant Service Manual for each model. Do not refit the seat/battery cover at this stage.
 7. Turn the ignition to the ON position and ensure that the engine stop switch is in the RUN position.



Warning

Never start the engine or let it run for any length of time in a closed area. The exhaust fumes are poisonous and may cause loss of consciousness and death within a short time. Always operate the motorcycle in the open air or in an area with adequate ventilation.



Warning

If selecting gears with the engine running, you **MUST** sit on the bike in the riding position and ensure that the clutch lever is pulled in to the handlebar and that the front brake is applied throughout this operation. Failure to observe this warning will result in loss of motorcycle control and an accident.

Note:

- **It may be necessary to start the engine in order to enable selection of all gears.**
8. Operate the gear change pedal, selecting each gear in turn. Ensure that the neutral light illuminates when neutral is selected and goes out when all other gears are selected.

9. If correct neutral light operation is observed, no further action is necessary.
10. **For spares kits with two washers:** If after fitting the 1.5 mm (silver) washer the neutral light does not illuminate when selecting neutral, repeat steps 1 to 9 replacing the 1.5 mm (silver) washer with a new 0.9 mm (black) washer from the kit.
11. **For spares kits with one washer:** If after fitting the 1.5 mm (silver) washer the neutral light does not illuminate when selecting neutral, repeat steps 1 to 9 replacing the 1.5 mm (silver) washer with a new 0.9 mm (black) washer part number T3555066.
12. Refit the seat/battery cover as described in the relevant Service Manual for each model.

Fitting the Selector Drum Parts Kit

1. Install the gear selector drum, as described in the relevant Service Manual for each model.
2. If necessary, shim the neutral light, refer to Replace the Neutral Light Switch on page 11.

Please mark your copy of the Service Manual with this information.

Item 7.

Description: Pulser Ring Fixings

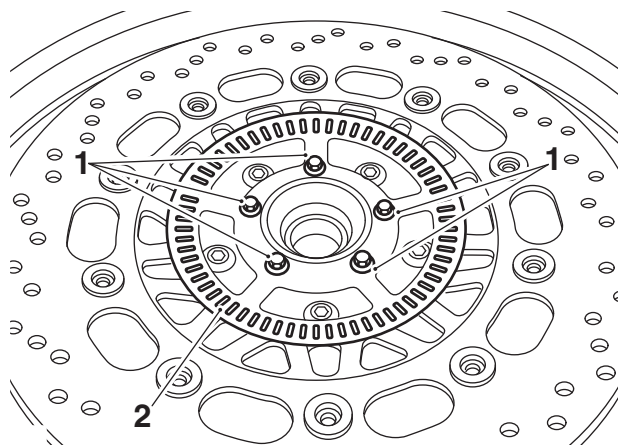
Models affected: Speed Triple 1050 cc All Models with ABS from VIN 670040

A revised fixing securing the rear pulser ring to the brake disc has been introduced on the above models from VIN 670040. The revised fixing is longer in length and is retrofittable to earlier models.

Note:

- **Models already in service need not be retightened unless the fixings have been loosened or removed.**
- **If loosened or removed for any reason the fixings must be replaced.**

1. Tighten the pulser ring fixings to **5 Nm**.



1. Fixings
2. Pulser ring

Please mark your copy of the Service Manual with this information.

Item 8.

Description: Side Stand Fixing

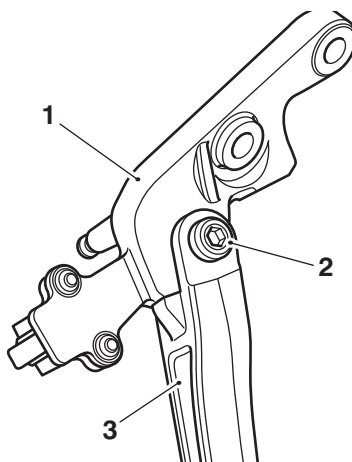
Models affected: Trophy and Trophy SE

A tightening sequence to secure the side stand to the side stand bracket has been introduced on the above models.

Note:

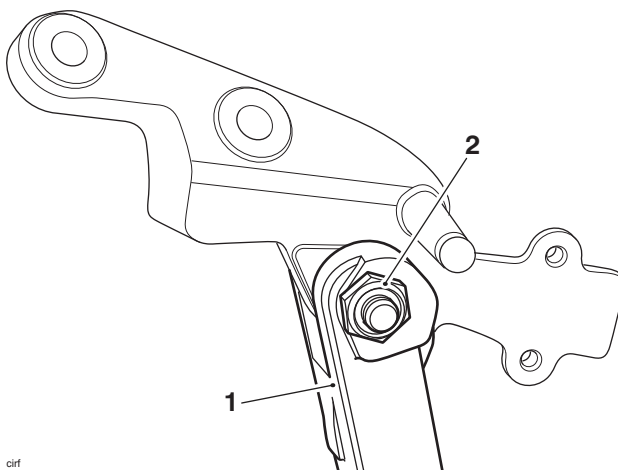
- **Models already in service need not be retightened unless the fixings have been loosened or removed.**

1. Tighten the side stand bolt to **20 Nm**.



1. Side stand bracket
2. Fixing
3. Side stand

2. Whilst ensuring the bolt does not turn, tighten the lock nut to **9 Nm**.



1. Side stand
2. Fixing

Please mark your copy of the Service Manual with this information.

Item 9.

Description: Side Stand Fixing

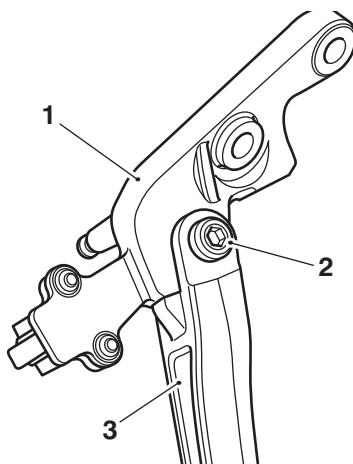
Models affected: Tiger Explorer and Tiger Explorer XC from VIN 670390

A revised bolt has been introduced on the above models from VIN 670390. If removed or replaced for any reason tighten the bolt and lock nut as described below.

Note:

- **Models already in service need not be retightened unless the fixings have been loosened or removed.**

1. Tighten the side stand bolt to **20 Nm**.

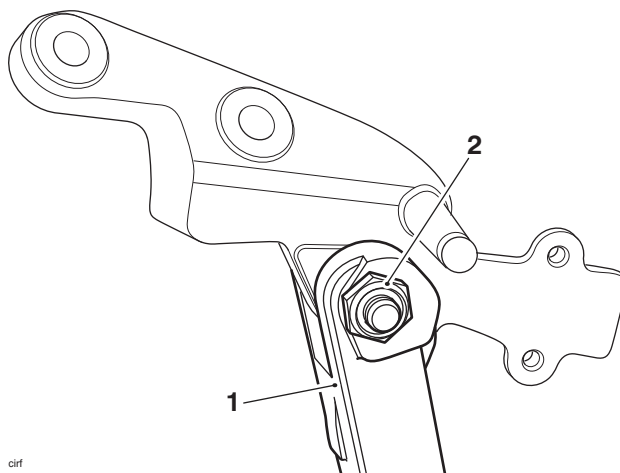


1. Side stand bracket

2. Fixing

3. Side stand

2. Whilst ensuring the bolt does not turn, tighten the lock nut to **9 Nm**.



1. Side stand

2. Fixing

Please mark your copy of the Service Manual with this information.

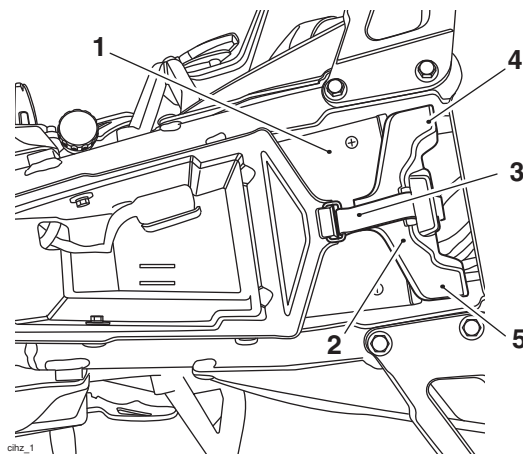
Item 10.

Description: Battery Terminal Cover

Models affected: Tiger Sport

From VIN 668084, the battery terminal cover for the above model has been placed into the fixing kit for transit in the packing crate.

When fitting the battery, collect the battery terminal cover from the fixing kit, feed the battery strap through it, position over the battery terminals and secure with the battery strap, as shown in the illustration below.



- 1. Battery
- 2. Battery terminal cover
- 3. Battery strap
- 4. Positive (red) terminal
- 5. Negative (black) terminal

Please mark your copy of the Part 2 - Motorcycle Assembly Guide with this information.

Item 11.

Description: Heated Grip Fixings

Models affected: Sprint GT from VIN 661205

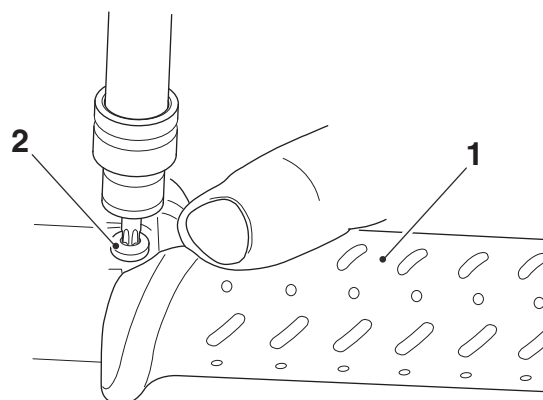
The torque figures for the bar end weights and the retaining screws on the left hand heated grip have changed and are listed in the table below:

Front Suspension

Application	Torque (Nm)	Notes
Left hand heated grip retaining screw	3	
Handlebar end weights	5	Use new fixings

Note:

- **Models already in service need not be retightened unless the fixings have been loosened or removed.**



1. Heated grip
2. Heated grip retaining screw

Please mark your copy of the Service Manual with this information.

Item 12.

Description: Headstock Bearing Adjustment

Models affected: Street Triple and Street Triple R from VIN 560477

The final torque figure for the headstock bearing adjuster nut has changed to **10 Nm** on the above models.

Note:

- **Models already in service need not be retightened unless the lock nut or the adjuster nut have been loosened or removed.**

The headstock bearing adjustment procedure is as described in the Service Manual noting the following.

1. Adjust the bearing free-play as follows, all using service tool T3880023 - Socket 50 mm:
 - Remove the lock nut, tab washer and adjuster nut.
 - Thoroughly clean the threads on the steering stem.
 - Refit the adjuster nut and tighten to **40 Nm**.
 - Loosen the adjuster nut, then re-tighten to **10 Nm**.
 - Fit a new tab washer and lock nut.



Warning

It is essential that the adjuster nut is not over-tightened. If the adjuster nut is over-tightened it will cause a pre-load on the headstock bearings. This will introduce tight steering, which could cause loss of motorcycle control and an accident.

- Hold the adjuster nut in position while tightening the lock nut to **40 Nm**.

Please mark your copy of the Service Manual with this information.

Item 13.

Description: Front and Rear Direction Indicator Fixings

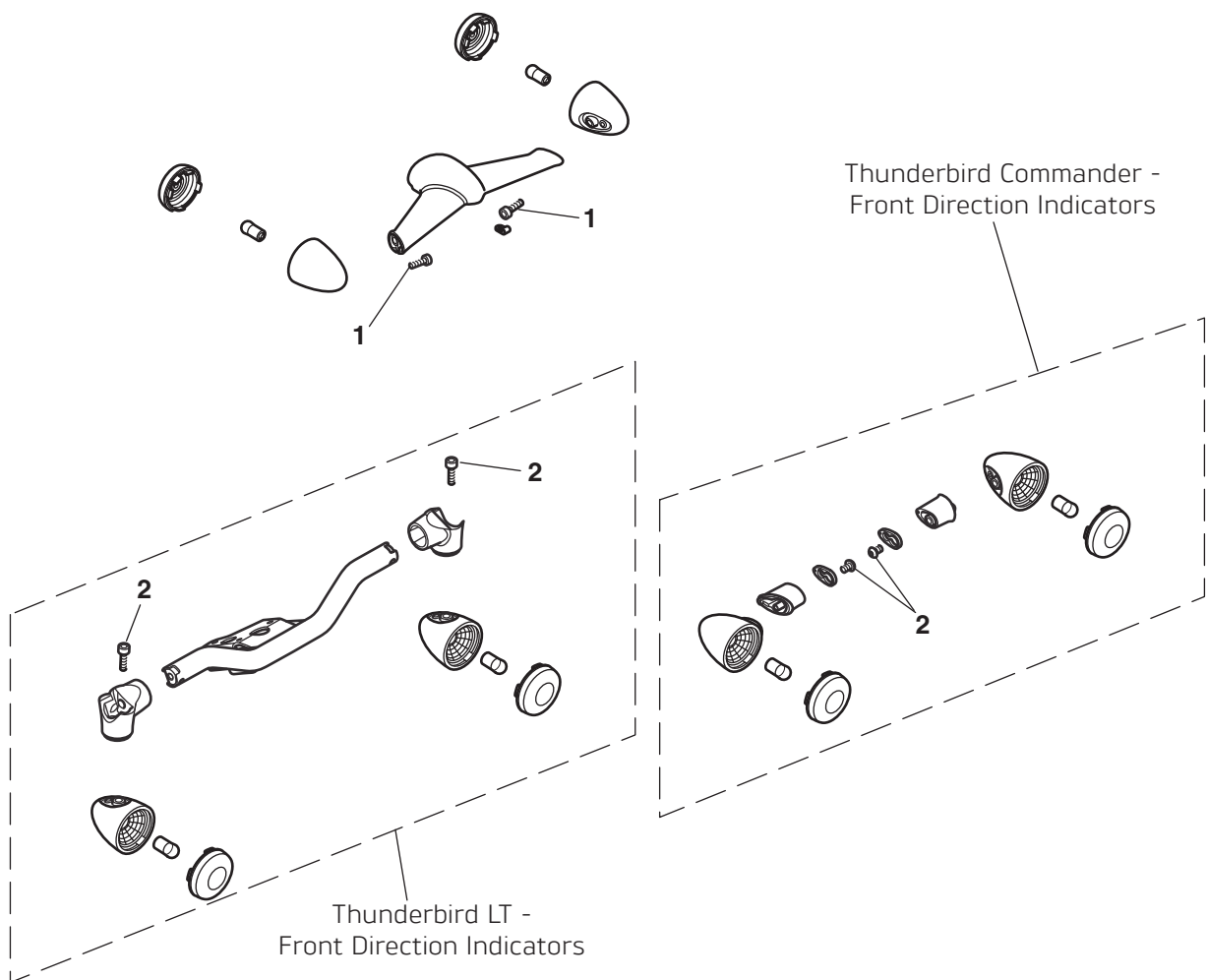
Models affected: Thunderbird Commander and Thunderbird LT

The fixings for the front and rear direction indicators have changed to encapsulated fixings on the above models.

The torque figure for these fixings is **18 Nm**, as described in the Service Manual. These fixings must be replaced if they are loosened or removed.

Note:

- **Models already in service need not be retightened unless the fixings have been loosened or removed.**



1. Rear direction indicator fixings
2. Front direction indicator fixings

Please mark your copy of the Service Manual with this information.

Item 14.**Description:** **Swinging Arm****Models affected:** **Thunderbird, Thunderbird with ABS, Thunderbird Storm and Thunderbird Storm with ABS**

The rear swinging arm has changed on the following models:

- Thunderbird with ABS from VIN 672050
- Thunderbird Storm with ABS from VIN 671847.

The new condition swinging arm is the same as the one fitted to Thunderbird Commander and Thunderbird LT.

Triumph Genuine Parts no longer support the original condition swinging arm.

For Thunderbird models built prior to the above mentioned VINs that require a new swinging arm, the rear brake hose and the final drive belt upper guard will also need to be replaced. To facilitate this the following parts kits are available:

Model	Parts Kit Number	Parts Kit Contents
Thunderbird	T2050863	T2054015, Belt Guard Upper T2022334, Brake Hose, Rear Caliper T2050174, Swinging Arm
Thunderbird with ABS	T2050861	T2054015, Belt Guard Upper T2022333, Brake Hose, Rear Caliper, ABS T2050174, Swinging Arm
Thunderbird Storm	T2050864	T2054016, Belt Guard Upper, Black T2022334, Brake Hose, Rear Caliper T2050174, Swinging Arm
Thunderbird Storm with ABS	T2050862	T2054016, Belt Guard Upper, Black T2022333, Brake Hose, Rear Caliper, ABS T2050174, Swinging Arm

For models built from the above mentioned VINs, the items can be replaced like for like, refer to the EPC.

The removal and installation of the swinging arm, rear brake hose and final drive belt upper guard is as described in the Service Manual.

Please mark your copy of the Service Manual with this information.

Item 15.**Description:** **Throttle Linkage Cleaning - Part of the Scheduled Maintenance****Models affected:** **Tiger 800, Tiger 800 with ABS, Tiger 800XC and Tiger 800XC with ABS**

This Technical News item is a repeat of Technical News 149 dated September 2013 with the additional information of how to clean and lubricate the idle speed control linkage on the above models.

Motorcycles used in off-road and severe or dusty riding conditions may require the throttle linkage to be cleaned and lubricated more frequently. Triumph recommends the regular cleaning and lubrication of the idle speed control and throttle linkages as part of the scheduled maintenance.

If for any reason the idle speed becomes erratic, dealers are required to check the throttle linkage is clean and lubricated correctly prior to replacing the throttle stepper motor.

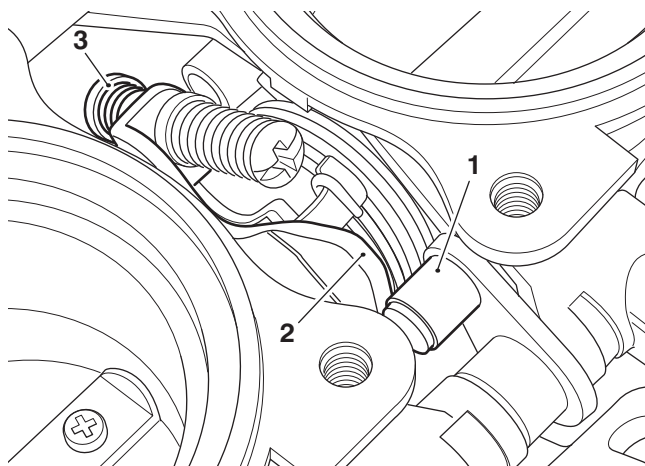
Clean and lubricate the idle speed control linkage following the procedure described below.

Disassembly

1. Remove the throttle bodies, as described in the Service Manual.
2. Remove the injectors, as described in the Service Manual.
3. Remove the idle speed control stepper motor, as described in the Service Manual.

Note:

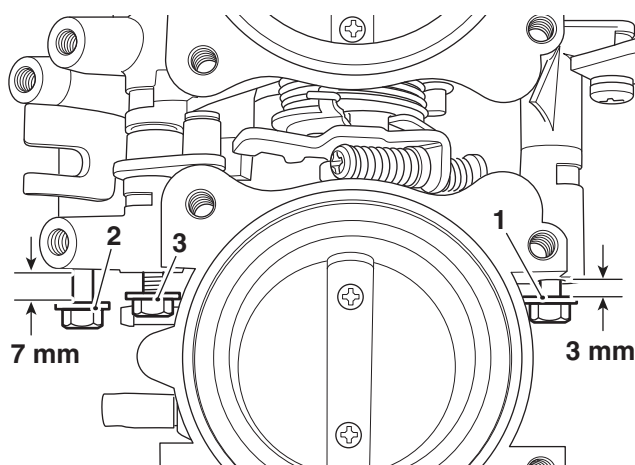
- **Prior to disassembly note the position of the idle speed control lever in relation to the throttle cam as shown below.**



1. Idle speed control lever
2. Throttle cam
3. Front spring, adjuster screw

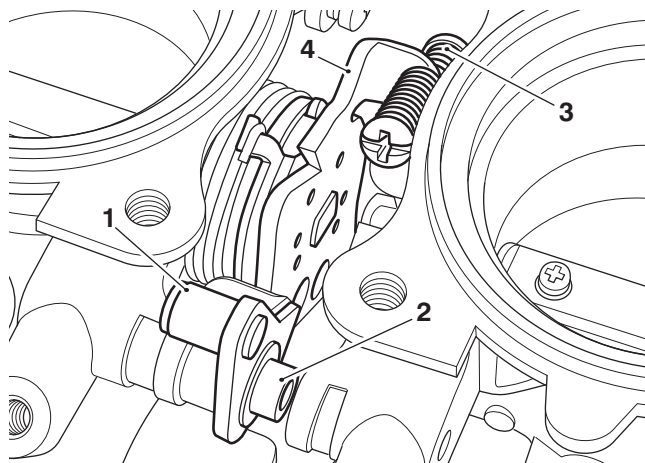
Note:

- **Do not fully remove the right hand throttle body as there is the risk of losing the front spring of the adjuster screw.**
4. Loosen the front fixing of the right hand throttle body until there is a 3 mm gap between the throttle body and the under head surface of the fixing.
 5. Loosen the rear fixing of the throttle body until there is a 7 mm gap between the throttle body and the under head surface of the fixing.
 6. Remove the fixing for the idle speed control lever.



1. Front fixing
2. Rear fixing
3. Fixing, idle speed control lever

-
- Carefully pull the right hand throttle body away from the centre throttle body. Ensure that the front spring of the adjustment screw remains in contact with the throttle cam.



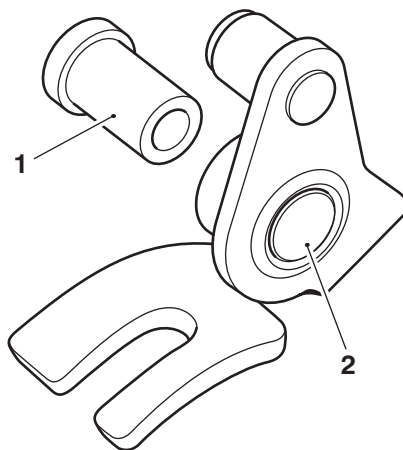
- Idle speed control lever
- Shouldered bush
- Front spring, adjustment screw
- Throttle cam

Note:

- Note the orientation of the idle speed control lever for installation.**
- Remove the idle speed control lever and shouldered bush assembly from the throttle bodies.

Note:

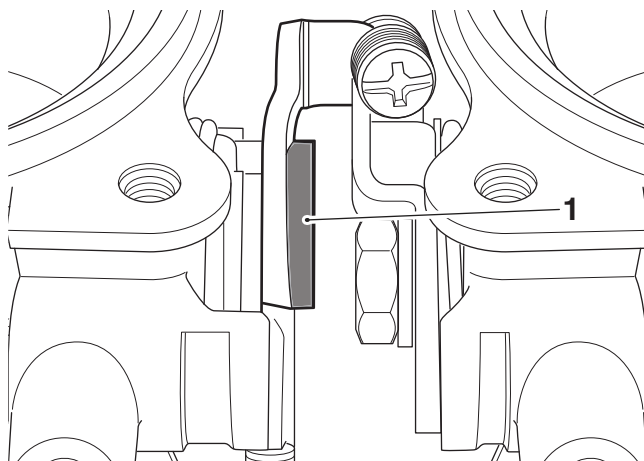
- Note the position of the shouldered bush in the idle speed control lever for installation.**
- Remove the shouldered bush from the idle speed control lever. Clean the grease and dirt off the shouldered bush and the idle speed control lever.



- Shouldered bush
- Idle speed control lever

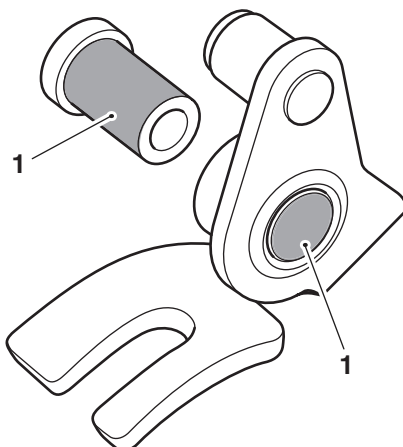
Assembly

1. Check the area of the throttle cam that makes contact with the idle speed control lever for excess roughness. Carefully remove any excess roughness with a piece of fine wet and dry emery paper.



1. Area of the throttle cam to be checked for roughness

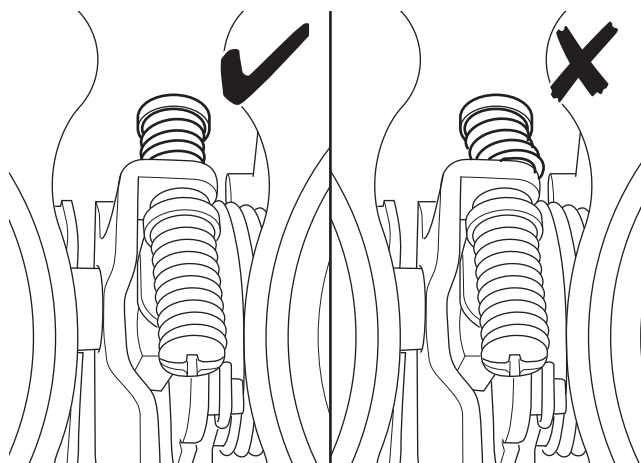
2. Lightly apply grease, Castrol High Temperature Grease, to the shouldered bush and its mounting point in the idle speed control lever.



1. Areas for the lightly applied grease

3. Refit the shouldered bush to the idle speed control lever as noted for removal.
4. Refit the idle speed control lever and shouldered bush assembly to the throttle bodies as noted for removal.

-
5. With the idle speed control lever in the position noted for removal, carefully push the right hand throttle body fully onto the centre throttle body. Ensure that the front spring for the adjustment screw is correctly positioned as shown below.



Correct/Incorrect Position of the Front Spring

6. Refit the fixing for the idle speed control lever, do not fully tighten at this stage.
7. Tighten the right hand throttle body's front and rear fixings to **3.5 Nm**.
8. Tighten the idle speed control lever to **2 Nm**.
9. Apply a small amount of grease, Castrol High Temperature Grease, to the plastic collar on the idle speed control stepper motor and refit to the throttle bodies, as described in the Service Manual.
10. Prior to refitting the throttle bodies, adjust the idle speed control stepper motor, as described in the Service Manual.
11. Refit the throttle bodies, as described in the Service Manual.

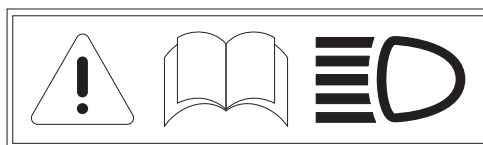
Please mark your copy of the Service Manual with this information.

Item 16.

Description: Headlight Label

Models affected: All Models

A warning label for headlights has been introduced to Triumph motorcycles to direct owners to the handbook for information about not covering the headlight lens. The location of the label, shown below, is model dependant but will be located near the headlight.



Headlight Warning Label

Models with the label fitted to the motorcycle will have the following caution in the Owner's Handbook for headlights.



Caution

Do not cover the headlight or lens with any item likely to obstruct air flow to, or prevent heat escaping from, the headlight lens.

Covering the headlight lens during operation with items of clothing, luggage, adhesive tape, devices intended to alter or adjust the headlight beam or non genuine headlight lens covers will cause the headlight lens to overheat and distort, causing irreparable damage to the headlight assembly.

Damage caused by overheating is not considered a manufacturing defect and will not be covered under warranty.

If the headlight must be covered during use - such as taping of the headlight lens required during closed-course conditions - then the headlight must be disconnected.

Item 17.

Description: Clutch Lifter Piece

Models affected: All Rocket III Models

From the start of production the clutch lifter piece, on the above models, has had several changes. The purpose of this Technical News item is to show when the changes were made, what the changes were and how to identify the relevant clutch lifter piece.

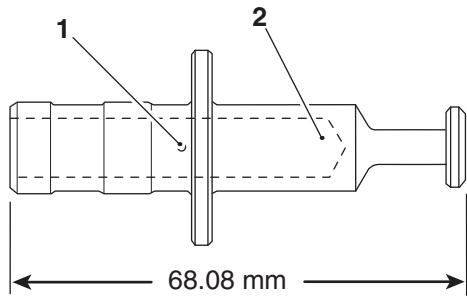
The table below lists the changes of the clutch lifter piece and, where possible, the engine number for the change.

Part Number/Issue Level	Engine Number	Changes/Comments
Lifter Piece T1170029 issue 1	Start of production	Washer T3550234 required
Lifter Piece T1170029 issue 2	-	Length of lifter reduced from 68.08 to 66.5 mm, Washer T3550234 required
Lifter Piece T1170057 issue 1	249179	Oil drilling removed, shoulder width reduced from 3 to 2.5 mm, Washer T3550234 required
Lifter Piece T1170057 issue 2	280804	Centre drilling removed, Washer T3550234 required
Lifter Piece T1170059 issue 1	300855	Part number change only, Washer T3550234 required
Lifter Piece T1170059 issue 2	369112	Shoulder width increased to 4.1 mm, Washer T3550234 removed
Lifter Piece T1170159 issue 1	369112	Part number change only, Washer T3550234 not required
Lifter Piece T1172023 issue 1	635897	Part number change only, Washer T3550234 not required

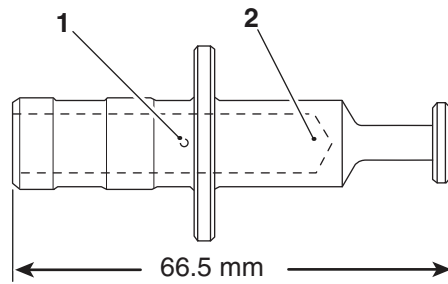
The following illustrations show the physical differences between the clutch lifter pieces.

T1170029 Issue 1 and 2

Clutch Lifter Piece T1170029 Issue 1



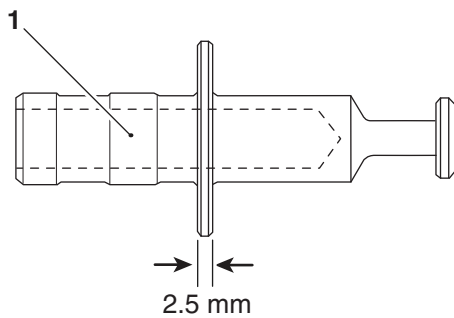
Clutch Lifter Piece T1170029 Issue 2



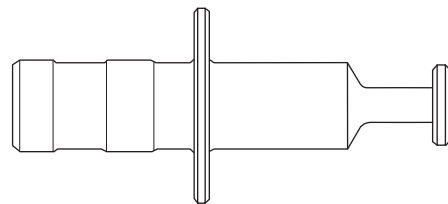
- 1. Oil drilling
- 2. Centre drilling

T1170057 Issue 1, 2 and T1170059 Issue 1

Clutch Lifter Piece T1170057 Issue 1



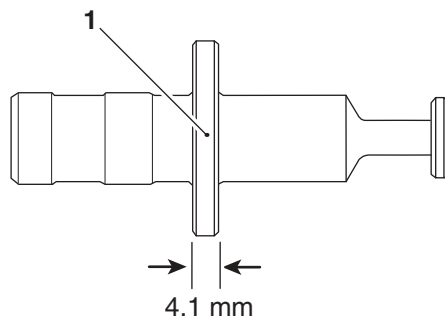
Clutch Lifter Piece T1170057 Issue 2
and T1170059 Issue 1



- 1. Centre drilling

T1170059 Issue 2, T1170159 and T1172023

Clutch Lifter Piece T1170059 Issue 2,
T1170159 and T1172023



- 1. Shoulder

The clutch lifter that was introduced at engine number 635897 (part number T1172023) is retrofittable back to engine number 249179.

Note:

- From engine number 249179 to engine number 369112 the clutch lifter piece was fitted with a flat washer and a wave washer.
- From engine number 369112 the clutch lifter piece is fitted with a wave washer only.

When fitting the latest condition clutch lifter piece to an older engine which has a lifter piece, flat washer and a wave washer, discard the flat washer and fit the new lifter piece with the wave washer only.

When fitting the latest condition clutch lifter piece to an older engine which has a lifter piece and a wave washer, fit the new lifter piece with the wave washer.

Please mark your copy of the Service Manual with this information.

Item 18.

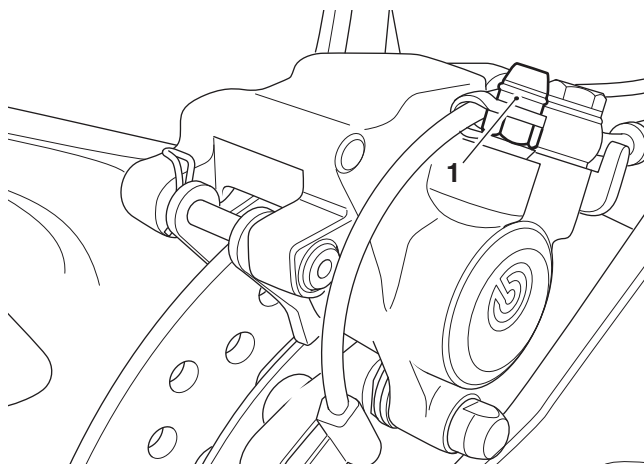
Description: Rear Brake Caliper Bleed Nipple

Models affected: Daytona 675 from VIN 564948 and Street Triple from VIN 560477

The torque figure for the rear brake caliper bleed nipple described in the Service Manual is incorrect, for the above models. The correct torque figure is **14 Nm**.

Note:

- Models already in service need not be retightened unless the fixings have been loosened or removed.



1. Bleed nipple, rear brake caliper

Please mark your copy of the Service Manual with this information.

Item 19.

Description: Owner's Handbook - Japanese Market Only

Models affected: Speed Triple 1050, Speed Triple 1050 with ABS, Tiger 1050 and Tiger Sport

We have discovered an error in the Japanese Owner's Handbooks for the above models.

The third paragraph, after the caution, for the Oil Level Inspection should read as follows:

'With the motorcycle upright, remove the filler plug/dipstick, wipe the blade clean and screw it fully home.'

Note:

- Even if the motorcycle is equipped with a centre stand, it must not be used when checking the engine oil level.

Please pass this information on to the owners of the above motorcycles.