



Technical Bulletin

Model(s)	Years(s)	Eng. Code(s)	Trans. Code(s)	VIN Range From	VIN Range To
Beetle, Beetle Convertible, Jetta, CC, Tiguan, Passat	2016	All	All	All	All

Condition

91 15 12 December 9, 2015 2042343 Supersedes V911510 dated November 19, 2015 to remove redundant procedural step.

MIB2 PQ Discover Media and MIB2 PQ Composition Media Radio Malfunctions

Note:

This bulletin only applies to vehicles equipped with PR code(s) 7UQ or I7B.

In addition to the symptoms listed below, this programming update proactively improves various other radio characteristics.

The customer may report one or more of the following symptoms:

- Infotainment system freezes or reboots
- Infotainment system turns off at random
- Navigation system malfunctions or is inoperative
- Navigation announcements speak in German
- Adjustment of subwoofer settings sporadically unavailable in setup menu
- Sirius radio issues
- Compass display in instrument cluster is erratic or malfunctions
- Crackling or static noise from speakers
- Park pilot is inoperative or unavailable
- Automatic clock update for Daylight Savings Time malfunctions
- Abnormal sound output and/or delayed sound output from speakers
- Android Auto malfunctions or is inoperative

Note:

This technical bulletin must be read in its entirety before attempting the software update.



Technical Bulletin

Technical Background

This procedure resolves the concern(s) specified above by updating the MIB2 PQ radio software to the latest level **0245**.

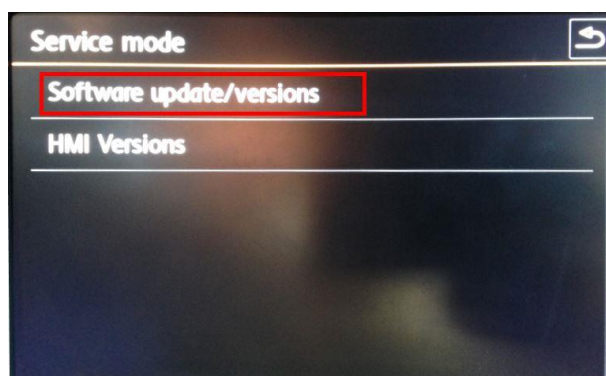
Production Solution

Not applicable.

Service

Software Update Procedure

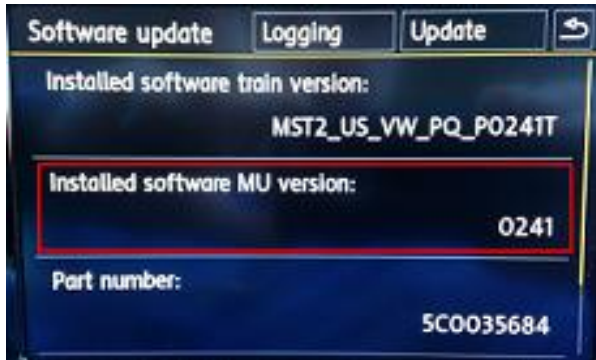
- Connect Midtronics InCharge 940 (INC 940) or GRX3000VAS Tester/Charger to the vehicle's battery.
- Switch the ignition to the ON position.
- Switch ON the radio.
- Check the Software Version by pressing and holding "Menu" button for 10 seconds to enter Service Mode.



- Select "Software update/versions" on the touch screen menu.

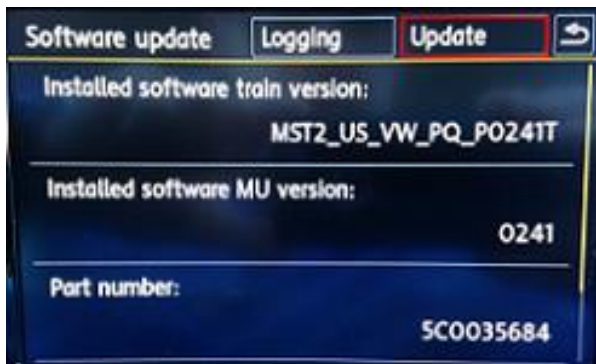


Technical Bulletin



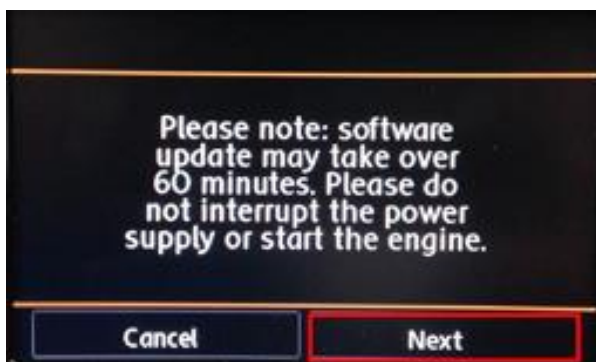
- If the current “Installed SW MU Version” is lower than 0245, proceed with this Technical Bulletin.
- If the current “Installed SW MU Version” is greater than or equal to 0245, this work procedure does not apply.

- Insert the applicable software update SD card into the SD card reader on the face of the radio display.
- Allow the data on the SD card to load.



- Press “Update” on the touch screen menu.

- Press “SD Card” on the touch screen menu.
- Press “MST2_US_VW_PQ_P0245T (0245-2)” on the touch screen menu.



- Press “Next” on the touch screen menu.
- The update will now take place.



Technical Bulletin



Tip:

The radio may reboot one or more times during the update process. This is normal and not indicative of a malfunction.



- This screen will be displayed once the update process is complete.
- Press the back arrow key on the touch screen display to return to the main menu.

- The update process is now complete.
- Remove the SD card from the SD card reader and store it in a suitable location.



Technical Bulletin

Warranty

To determine if this procedure is covered under Warranty, always refer to the Warranty Policies and Procedures Manual ¹⁾					
Model(s)	Year(s)	Eng. Code(s)	Trans. Code(s)	VIN Range From	VIN Range To
Beetle Sedan, Beetle Cabrio, Jetta, CC, Tiguan, Passat	2016	All	All	All	All
SAGA Coding					
Claim Type:	Use applicable Claim Type ¹⁾				
Service Number:	Damage Code	HST		Damage Location (Depends on Service No.)	
9130	0039	--		Use applicable when indicated in Elsa (L/R)	
Parts Manufacturer	Beetle Cabrio, Beetle Sedan, Jetta, CC, Tiguan, Passat		YD5 ²⁾		
Labor Operation ³⁾ : Update programming			91302599 = 40 TU		
Labor Operation ³⁾ : Charge Battery			27068950 = 10 TU		
Causal Part: Select Labor Operation			91302599		
Diagnostic Time ⁴⁾					
GFF Time expenditure	01500000 = 00 TU max.		NO		
Road Test	01210002 = 00 TU 01210004 = 00 TU		NO		
Technical Diagnosis	01320000 = 00 TU max.		NO		
Claim Comment: Input "As per Technical Bulletin 2042343" in comment section of Warranty Claim.					



Technical Bulletin

- 1) Vehicle may be outside any Warranty in which case this Technical Bulletin is informational only
- 2) Code per warranty vendor code policy.
- 3) Labor Time Units (TUs) are subject to change with ELSA updates.
- 4) Documentation required per Warranty Policies and Procedures Manual.

Required Parts and Tools

No special tools required.

Tool Description	Tool No:
Midtronics Battery Tester/Charger	InCharge 940 (INC-940) or GRX3000VAS
VAS Diagnostic Tool	VAS 6150/X & VAS 6160/X with ODIS Service with: current online updates
SD Card: MY 2016 Beetle Sedan, Beetle Cabrio, Jetta, CC, Tiguan, Passat	SW0245UD



Tip:

Additional copies of the SD card may be ordered from Volkswagen Technical Literature Ordering Center at www.vw.techliterature.com.

Additional Information

All part and service references provided in this Technical Bulletin are subject to change and/or removal. Always check with your Parts Dept. and Repair Manuals for the latest information.