

Technical Service Bulletin



43 Self-leveling compressor inoperative

43 12 11 2018765/7 October 29, 2012. Supersedes Technical Service Bulletin Group 43 number 12-08 dated February 2, 2012 for reasons listed below.

| Model(s) | Year | VIN Range | Vehicle-Specific Equipment |
|----------|-------------|-----------|----------------------------|
| A6 (C6) | 2004 - 2008 | All | Air Suspension |
| A8 (D3) | 2004 - 2010 | | |
| Q7 | 2007 - 2011 | | |
| A6 (C7) | 2013 | | |
| A7 (C7) | 2013 | | |
| A8 (D4) | 2011 - 2013 | | |

Condition

| REVISION HISTORY | | |
|------------------|------------|---|
| Revision | Date | Purpose |
| 7 | 10/25/2012 | Revised header data (added models and model years) Revised <i>Warranty</i> |
| 6 | 2/2/2012 | Revised <i>Warranty</i> |
| 5 | 9/10/2010 | Revised header data (Model years) |
| 4 | 10/27/2009 | Revised header data (Added Model year 2010) |
| 3 | 12/11/2008 | Revised <i>Service</i> |
| 2 | 11/3/2008 | Revised Title to include Repair Group |

- The self-leveling system cannot be adjusted any more with the MMI.
- The compressor for the self-leveling system continues to run after switching off the engine and locking the vehicle.
- One of the following DTCs may be stored:
 - **DTC 0453** (restricted function through excess temperature).

- **DTC 1583** (leak in the system recognized).
- **DTC 1770** (sender for compressor temperature of self-leveling control G290).
- **DTC 1772** (signal cable of pressure sender for self-leveling control G291).
- **DTC 2645** (valves for self-leveling control).
- **DTC 2646** (plausibility of self-leveling control).

Technical Background

Because of poor performance or failure of the compressor for air suspension, the vehicle position cannot be adjusted. As a safeguard, the control module will lower the vehicle to the lowest position and illuminate the warning light. Drivability is not affected.

Production Solution

Not applicable.

Service

1. Use a direct current supply to check the compressor for the self-leveling system.
2. See the current flow diagram for the locations of the relay and the compressor.
3. Check the relay J403 of the compressor for the self-leveling system.

4. Open the relay and assess the contacts. Compare them with the contacts of Figures 1 to 3.

Is the wear is similar, or are there burn marks in the housing?

If the relay resembles Figures 1 to 3, replace the compressor and relay J403 for the self-leveling system.

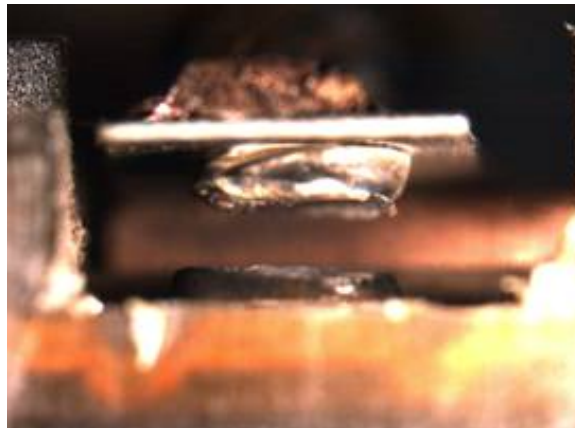


Figure 1. Strong erosion of both contacts.

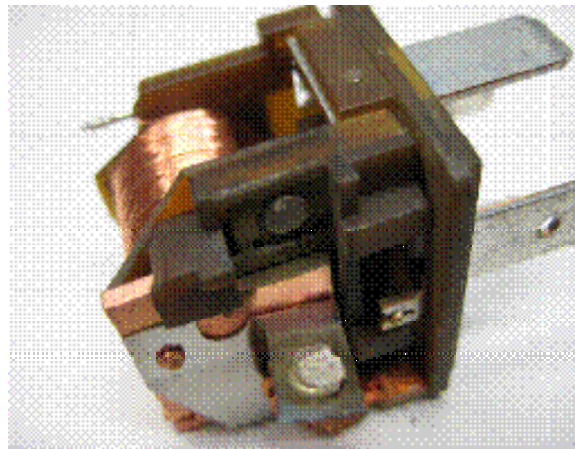


Figure 2. Strong erosion of both contacts.

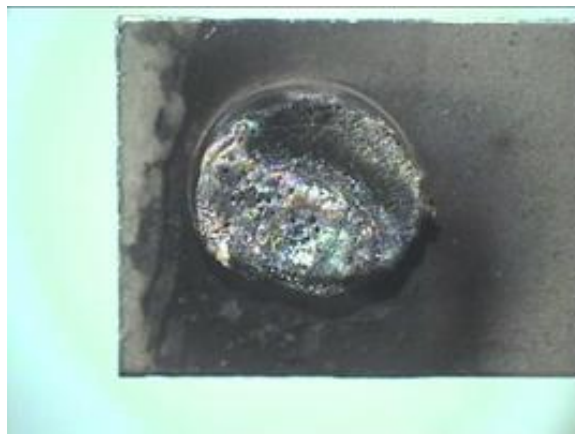


Figure 3. Strong erosion of the spring contact.

5. Discoloring of the strand is also a clear indication of permanent operation of the compressor (Figure 4).

Replace the compressor and relay J403 for the self-leveling system.



Figure 4. Overheated strand.

6. If the contacts resemble those in Figure 5 and the compressor has a working noise similar to a comparable vehicle, replace *only* the opened relay J403 for the self-leveling system.

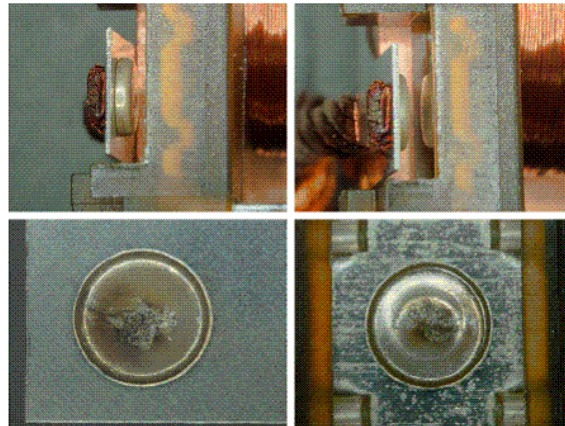


Figure 5. Contacts with minor marks; relay OK.

Warranty

| | |
|--------------------------|--|
| Claim Type: | Use applicable claim type. Vehicle may be outside any warranty, in which case this Technical Service Bulletin is informational only. |
| Service Number: | 4315 |
| Damage Code: | 0040 |
| Labor Operations: | A6 (2005 – 2008): |

Technical Service Bulletin



| | | | |
|--|--|-----------|--------|
| | Compressor remove and install | 4315 1950 | 70 TU |
| | Or Compressor remove and install with charge air cooler | 4315 1951 | 90 TU |
| | Front bumper cover remove and install | 6329 1900 | 90 TU |
| | Central electronics cover remove and install | 9793 1900 | 70 TU |
| | Relay for suspension compressor inspect | 4315 1999 | 10 TU |
| | A8 V8 (2004 – 2010): | | |
| | Compressor remove and install | 4315 1900 | 90 TU |
| | Shelf under dash panel remove and install | 6818 1900 | 50 TU |
| | Relay for suspension compressor inspect | 4315 1999 | 10 TU |
| | S8 and W12 (2005 – 2010): | | |
| | Compressor remove and install | 4315 1950 | 70 TU |
| | Lock carrier loosened and fastened | 5038 0900 | 160 TU |
| | Audi Q7: | | |
| | Compressor remove and install | 4315 1900 | 70 TU |

Technical Service Bulletin



| | | | |
|-------------------------|--|--------------|--|
| | Shelf under dash panel remove and install | 6818 1900 | 30 TU |
| | Relay for suspension compressor inspect | 4315 1999 | 10 TU |
| | A8 (model year 2011 forward) | | |
| | Compressor remove and install | 4315 1900 | 50 TU |
| | Shelf under dash panel remove and install | 6818 1900 | 30 TU |
| | Relay for suspension compressor inspect | 4315 1999 | 10 TU |
| | S6 / S7 (model year 2013 forward): | | |
| | Compressor remove and install | 4315 9999 | 60 TU |
| | Relay for suspension compressor inspect | 4315 1999 | 20 TU |
| Diagnostic Time: | GFF | 0150 0000 | Time stated on diagnostic protocol (10 TU Max) |
| | Road test prior to service procedure | No allowance | 0 TU |
| | Road test after service procedure | No allowance | 0 TU |
| | Technical diagnosis at dealer' s discretion (Refer to Section 2.2.1.2 and Audi Warranty Online for DADP allowance details) | | |
| Claim Comment: | As per TSB #2018765/7 | | |

Technical Service Bulletin



All warranty claims submitted for payment must be in accordance with the *Audi Warranty Policies and Procedures Manual*. Claims are subject to review or audit by Audi Warranty.

Additional Information

All parts and service references provided in this TSB are subject to change and/or removal. Always check with your Parts Department and service manuals for the latest information.