

1 8 13-14



## Service Information Bulletin

SUBJECT	DATE
Fuel Injector Wiring Harness - Two-Filter System and Three-Filter System	August 2014

### Additions, Revisions, or Updates

Publication Number / Title	Platform	Section Title	Change
DDC-SVC-MAN-0082 DDC-SVC-MAN-0182 DDC-SVC-MAN-S182	DD Platform	Installation of the Two-Piece Fuel Injector Wiring Harness - Two-Filter System	Added Step 1 to lubricate the injector harness connector seal at the cam frame housing with engine oil.
DDC-SVC-MAN-0082	DD Platform	Installation of the Two-Piece Fuel Injector Wiring Harness - Three-Filter System	
		Installation of the One-Piece Fuel Injector Wiring Harness - Three-Filter System	

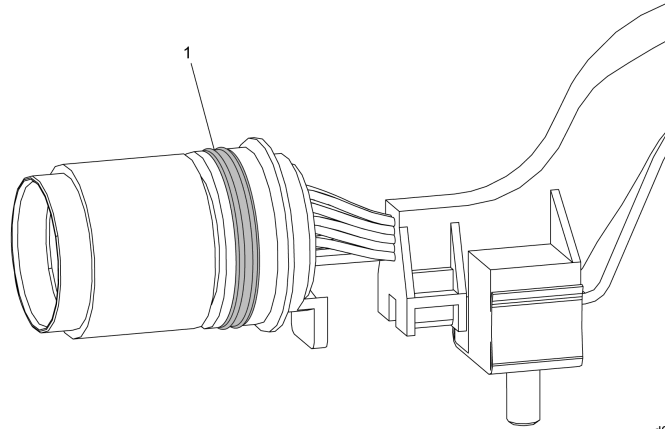


13400 Outer Drive, West, Detroit, Michigan 48239-4001  
 Telephone: 313-592-5000  
[www.demanddetroit.com](http://www.demanddetroit.com)

## 2 Installation of the Two-Piece Fuel Injector Wiring Harness - Two-Filter System

Install as follows:

1. Lightly lubricate the outer seal (1) prior to installing the new injector harnesses with clean engine oil.



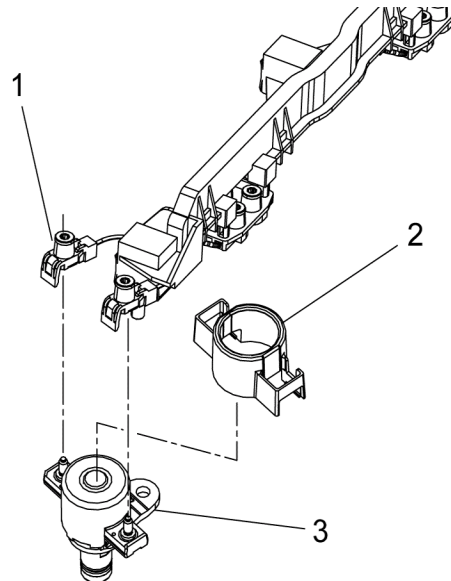
d070113

2. Install injector harness and tighten the allen head mounting screws to 10 N·m (7 lb·ft).

**NOTICE:** Effective with engine s/n HDE0053776 built on October 11, 2010; The terminals on the injector harness for the engine brake solenoid now have a protective plastic cover (1). If installing a new harness with the protective terminal cover on an older engine that has a protective cover on the engine brake solenoid (2), it will be necessary to first remove the existing protective cover from the engine solenoid (3). The protective cover slides off the engine brake solenoid.

**NOTICE:** The protective cover on the injector harness is not removable. Attempting to remove the protective cover from the terminal nut will result in damage to the injector harness.

3. Install electrical contacts to injector and tighten to 1.9 N·m (17 lb·in).



d050044

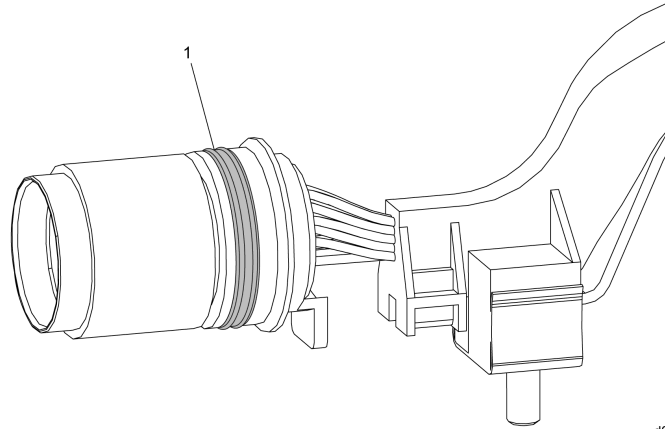
4. Connect engine brake solenoid terminals and torque to 1.5 N·m (1 lb·ft).
5. Install spring clips holding injector harness connector to camshaft frame.

6. Connect 14-pin injector harness connectors.
7. Install the rocker cover. Refer to section "Installation of the Rocker Cover".
8. Connect batteries. Refer to OEM procedures.

### 3 Installation of the Two-Piece Fuel Injector Wiring Harness - Three-Filter System

Install as follows:

1. Lightly lubricate the outer seal (1) prior to installing the new injector harnesses with clean engine oil.



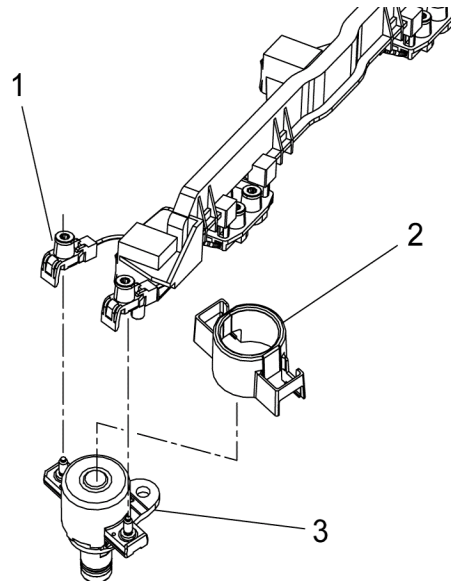
d070113

2. Install injector harness and tighten the allen head mounting screws to 10 N·m (7 lb·ft).

**NOTICE:** Effective with engine s/n HDE0053776 built on October 11, 2010; The terminals on the injector harness for the engine brake solenoid now have a protective plastic cover (1). If installing a new harness with the protective terminal cover on an older engine that has a protective cover on the engine brake solenoid (2), it will be necessary to first remove the existing protective cover from the engine solenoid (3). The protective cover slides off the engine brake solenoid.

**NOTICE:** The protective cover on the injector harness is not removable. Attempting to remove the protective cover from the terminal nut will result in damage to the injector harness.

3. Install electrical contacts to injector and tighten to 1.9 N·m (17 lb·in).



d050044

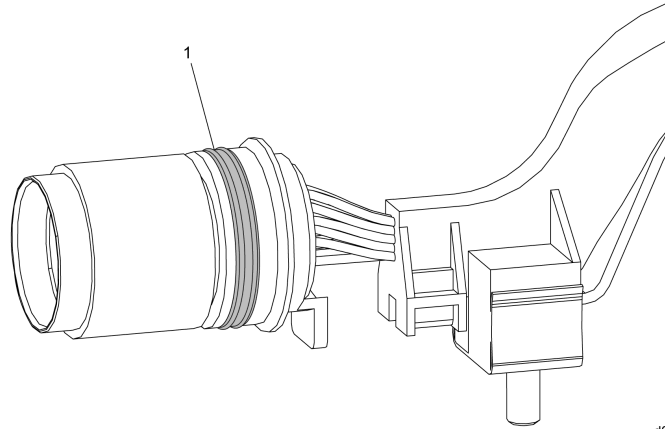
4. Connect engine brake solenoid terminals and torque to 1.5 N·m (1 lb·ft).
5. Install spring clips holding injector harness connector to camshaft frame.

6. Connect 14-pin injector harness connectors.
7. Install the rocker cover. Refer to section "Installation of the Rocker Cover".
8. Connect batteries. Refer to OEM procedures.

## 4 Installation of the One-Piece Fuel Injector Wiring Harness - Three-Filter System

Install as follows:

1. Lightly lubricate the outer seal (1) prior to installing the new injector harnesses with clean engine oil.



d070113

2. Install seal into groove in one-piece fuel injector wiring harness.
3. Install one-piece fuel injector wiring harness on camshaft housing. Torque allen bolts to 10 N·m (7 lb·ft).
4. Install electrical terminals to injectors and torque to 1.9 N·m (17 lb·in).
5. Connect engine brake solenoid terminals and torque to 1.5 N·m (1 lb·ft).
6. Install the rocker cover. Refer to section "Installation of the Rocker Cover".
7. Connect both 14-pin injector harness connectors.
8. Connect the batteries.



### **WARNING: PERSONAL INJURY**

To avoid injury before starting and running the engine, ensure the vehicle is parked on a level surface, parking brake is set, and the wheels are blocked.



### **WARNING: ENGINE EXHAUST**

To avoid injury from inhaling engine exhaust, always operate the engine in a well-ventilated area. Engine exhaust is toxic.

9. Start the engine and check for leaks.