

Tech Tips

TT 66-14-01

Date: August 8, 2014

Replacing the Side Spoilers (Flaps) 2015 GTI



Required Parts:	Part number:	Alternative ^(**)
Spoiler (left)	5G6 805 945 C 041	
Spoiler (right)	5G6 805 946 C 041	
Cleaning solution	D 009 401 04 *	3M 38983 general purpose adhesive remover
Glass Primer	D 177 500 A1 **	3M 06396 adhesion promoter

Note:

This document shows how to replace the spoiler (flap) on one side only; we recommend replacing the spoilers on **both sides**.

1. Remove the spoilers (flaps) following the steps in the ELSA repair manual:
Body → 66 Exterior equipment → Spoiler → Removing and installing side spoiler.
2. Remove the (tape) residue from the windshield and clean it thoroughly with **cleaning solution D 009.401.04***.
3. Using a dry microfiber cloth, wipe the window dry and **wait 5 minutes** before proceeding with the next step.

Service Information

4. Apply **one** layer of glass primer (D 177.500.A1**), apply the primer in **one direction** only (Figure 1 and 2).

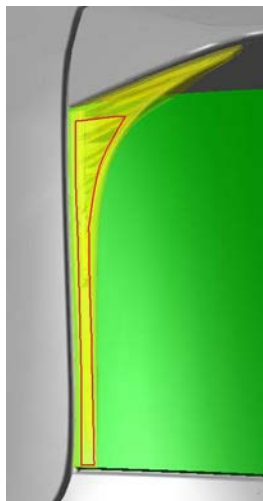


Figure 1: Primed area in yellow

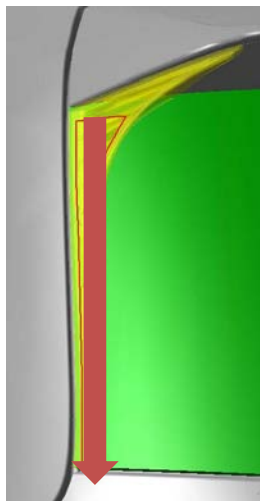


Figure 2: Apply primer and wipe in **one direction**

5. Directly after applying the primer, use a microfiber cloth to wipe off the primed surface in one swipe as shown in Figure 2 (**wipe in one direction only**).
6. Again **wait 5 minutes** before proceeding to the next step.

* Alternatively use 3M 38983 general purpose adhesive remover or other VOC-compliant alternative, as regulated by your local VOC restrictions

** Alternatively use 3M 06396 adhesion promoter or other VOC-compliant alternative, as regulated by your local VOC restrictions

→ **(only use an alternative for this product if the recommended product is restricted in your area)**

Service Information

7. Remove the protective film from the **upper part** of the flap and install the flap by aligning it to the **edge of the rear spoiler** as shown in Figure 3.



Figure 3: Align the flap to the spoiler

8. Remove the protective film from the **long side** of the flap and Install the flap to the window glass by aligning the **lower side of the flap with the edge of the window glass** as shown in Figure 4.

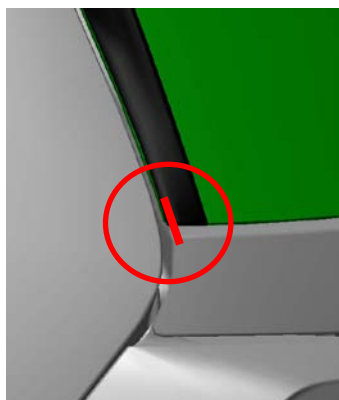


Figure 4: Align the lower part of the flap to the edge of the window glass

9. Firmly press the flap **over the entire length**.