

PREVOST

Instruction Sheet

IS-17043

Optimal operation of the lavatory fan

APPLICATION

Model	VIN
H3-45 coaches Model Year : 2011 - 2018	From 2PCH33494BC711779 up to 2PCH33499JC710156 incl.
This bulletin does not necessarily apply to all the above-mentioned vehicles, some vehicles may have been modified before delivery.	



MATERIAL

Order kit #400646 that contains the following parts:

Part No.	Description	Qty
400256	Hose 670 mm long	1
504319	Hose clamp	2
400647	End plug	1
400512	Flange assembly	1
864368	Panel plastic retainer	4
IS-17043	Instruction sheet	1
FI-17043	Feuille d'instruction	1

Other parts that may be required:

Part No.	Description	Qty
684743	Glue Plexus MA832GB	As req.
680808	Mixing nozzle 10-24, ratio 10.1	1
504637	Cable tie nylon middle size	4
682481	Hockey tape 35mm	As req.

NOTE

Material can be obtained through regular channels.

PROCEDURE



DANGER

Park vehicle safely, apply parking brake, stop engine. Prior to working on the vehicle, set the ignition switch to the OFF position and trip the main circuit breakers equipped with a trip button.

NOTE

This installation has to be performed at temperatures between 65°F (18°C) and 85°F (30°C). Temperatures below 65°F (18°C) or above 85°F (30°C) will slow down or increase cure rate significantly.

NOTE

Some steps need two operators to manipulate components.



DANGER

Application of glue can result in the release of volatile toxic gases. Prolonged or excessive exposure may cause serious illness or death. Insure adequate ventilation of the workspace.



WARNING

Wear gloves and safety glasses to avoid skin and eye contact with the glue.

1. From the engine compartment, locate the lavatory fan (item 1, Figure 1).
2. Locate and disconnect the lavatory fan motor connector (item 2, Figure 1).

NOTE

Picture might be different according to vehicle model year.



FIGURE 1

3. Locate last row of passenger seats on the RH side of the vehicle (Figure 2).

NOTE

Procedure to remove seats is similar for other seat models you might have.

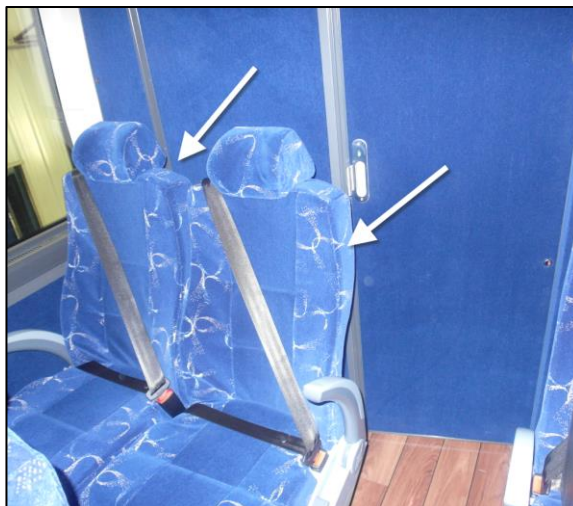


FIGURE 2

4. Remove rail cover in front of the seat pedestal (Figure 3). It is only snapped on the rail. Use a flat screw driver at one end and lift progressively the cover.

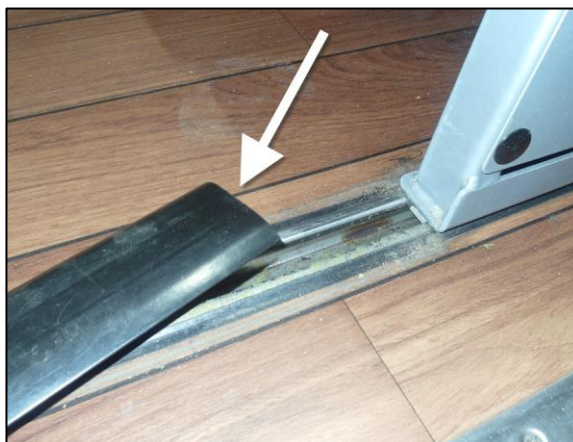


FIGURE 3

5. Mark a line on the rail with a permanent marker (Figure 4). This mark will position the seat during reinstallation.

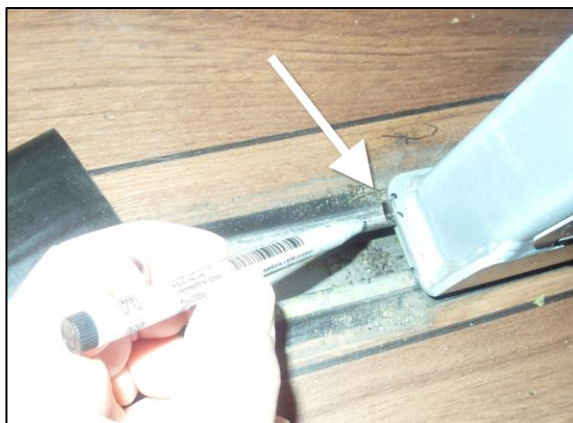


FIGURE 4

6. Remove seat pedestal cover (item 1, Figure 5). This panel is retained by four (4) plastic retainers snapped in place to hold the panel. Use a tack lifter to remove retainers. Insert a little piece of cardboard between the cover and the tack lifter to protect the painting.



7. Remove nuts (3) that fix the seat pedestal to the floor track (item 2, Figure 5).

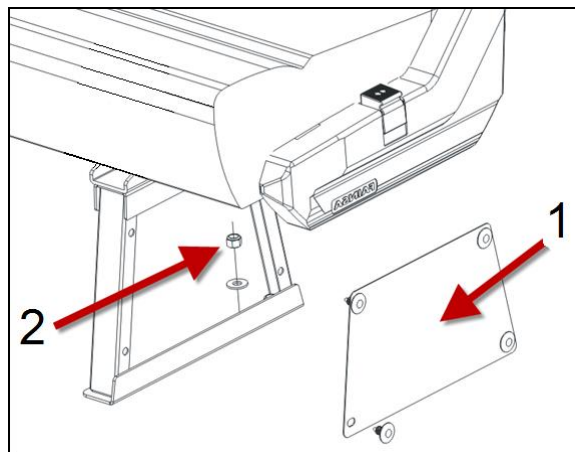


FIGURE 5

8. Locate the front screw that supports the seats on the side wall rail (Figure 6).
9. Mark a line on the rail with a permanent marker (Figure 6). This mark will position the seat during reinstallation.



FIGURE 6

10. Loosen the screws (2) on the side wall rail (Figure 7). It is not necessary to fully remove the screws, but only loosen it to unlock the brackets on the rail.

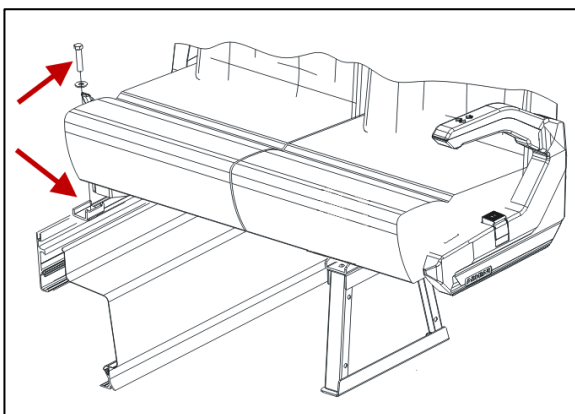


FIGURE 7

11. Remove the seats and place upside down on the seats in the preceding row.

NOTE

This operation requires two workers to avoid injuries and vehicle damage.

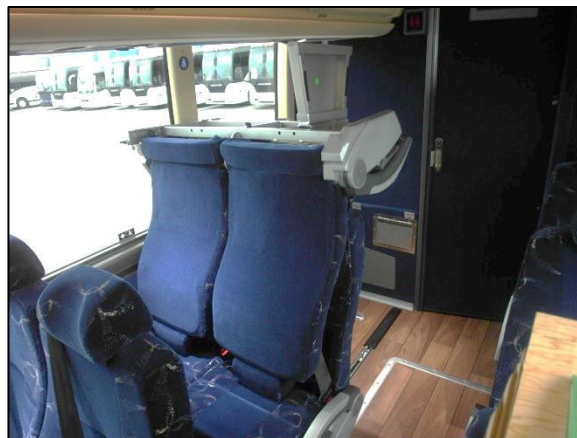


FIGURE 8

12. Remove the garbage cover and the garbage (Figure 9).

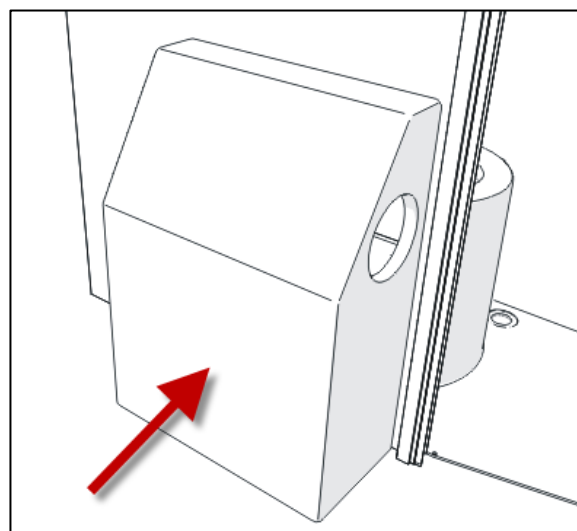


FIGURE 9

13. Remove garbage cover stopper on the vehicle floor (Figure 10). This will make the working area more comfortable and safer.



FIGURE 10

14. Remove screws (8) on the lavatory access panel (Figure 11).

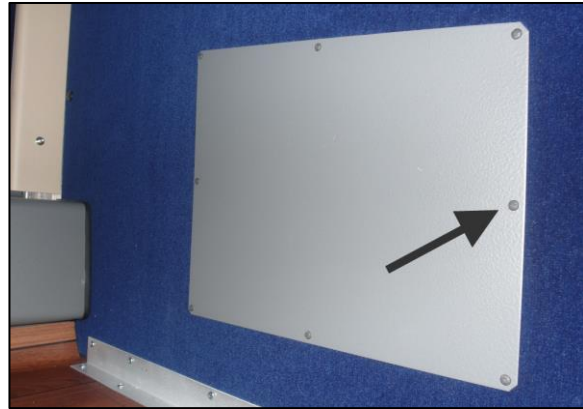


FIGURE 11

15. From the service access (item 1, Figure 12), remove hose collar and unplug the hose to the tube that runs to the sump tank.
16. Keep the collar to use in a later step.

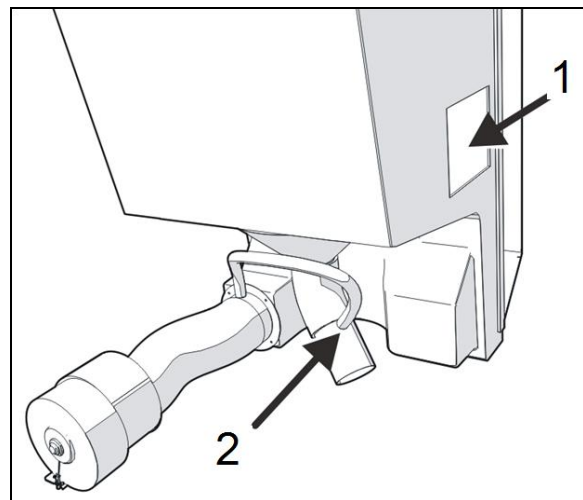


FIGURE 12

17. Insert end plug #400647 (item 1, Figure 13) into the step 15 unplugged hose (item 2, Figure 13).

NOTE

This hose has no more use. It is okay to shorten the length, but it is necessary to plug it with the end plug to keep efficiency of the vacuum coming from the blower.

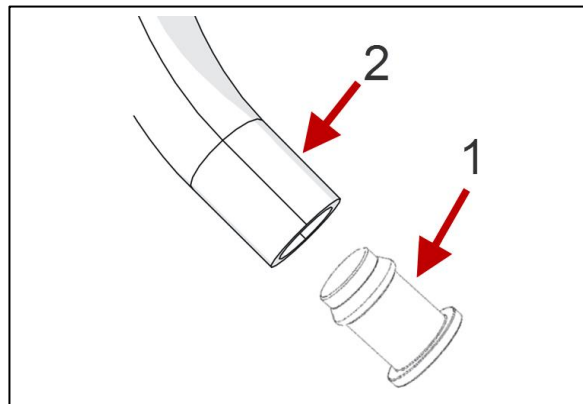


FIGURE 13

18. Make sure the end plug flat head is in contact with the hose end (Figure 14).
19. Install hose collar from step 16 and tighten to this torque value:

Torque: 35-45 Lb-in

NOTE

Make sure the position of the hose collar is between the flat head and the collar shape of the end plug (Figure 14).



FIGURE 14

20. Remove air intake grill (Figure 15).



FIGURE 15

21. From inside the lavatory, use a hole saw to drill a 7/8" (21mm) diameter hole through the inclined surface of the toilet moulding. Center the hole with the air intake opening and with the inclined surface (Figure 16).

NOTE

Lavatory fan should not run for this operation and for all the installation.



FIGURE 16

22. On the flange assembly, roughen the mounting surface with paper sand, a Scotch Brite or small polishing tool to improve adhesion of the glue (Figure 17). The mounting surface is on the longer tube side.
23. Clean the mounting surface with antsilicone.

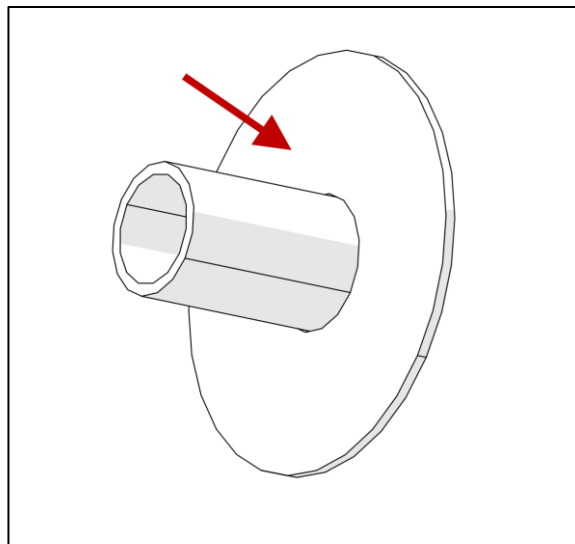


FIGURE 17

24. From the inside of the toilet moulding, roughen the mounting surface with paper sand or a Scotch Brite to improve adhesion of the glue (Figure 18).
25. Clean the mounting surface with antsilicone.

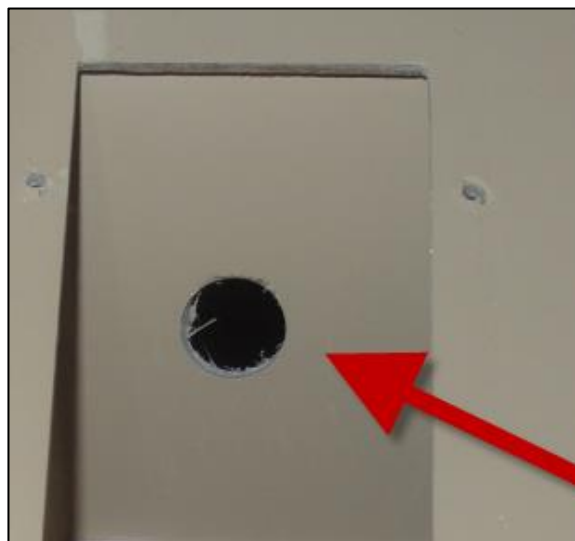


FIGURE 18

NOTE

If the fan is still running, there are great risks to drop the rag from your hand. The rag will move fast by the suction into the fan cage and it will stay there.

In case of a rag becomes stuck in the cage, dismantle the fan and remove the rag or other unwanted elements.

26. Open the entrance door and the rear roof hatch to insure good ventilation.
27. Apply a glue bead (4 to 5mm diameter) on the flange and all around the longer tube. Use glue #684743 or equivalent and the mixer #680808 (Figure 19).

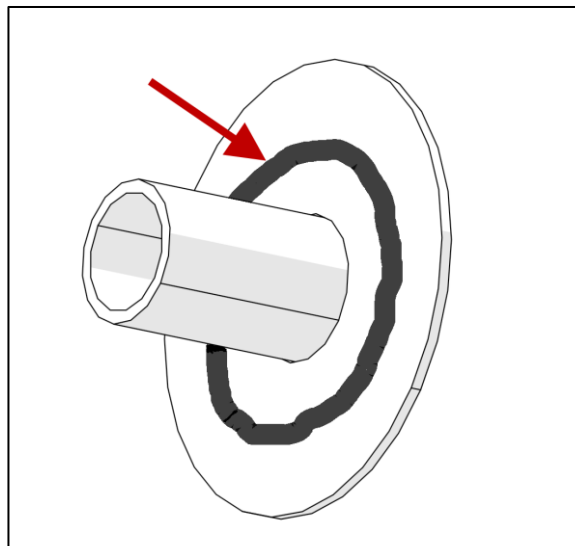


FIGURE 19

28. Install the flange assembly inside the toilet moulding (Figure 20).

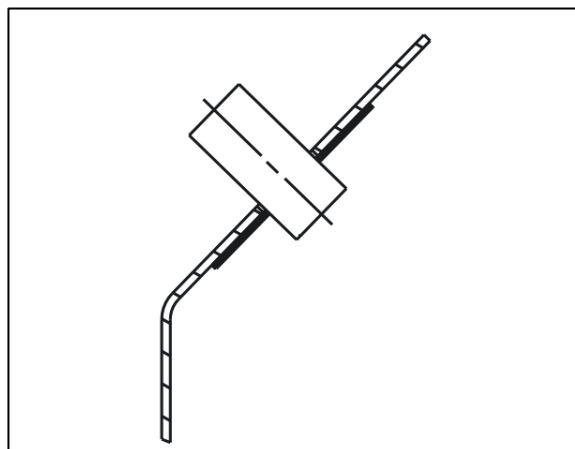


FIGURE 20

29. Use hockey tape to keep the flange assembly in place during the cure time (Figure 21).
30. Wait one hour (1h) prior to move to next step.

NOTE

This specific glue needs a cure time. Do not install hose before completing this period of time.

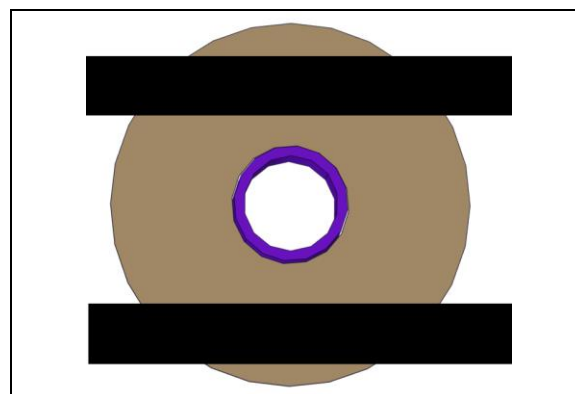


FIGURE 21

31. Install one end of the new hose with the Flange assembly tube. Tighten the collar to this torque value:

Torque: 35-45 Lb-in

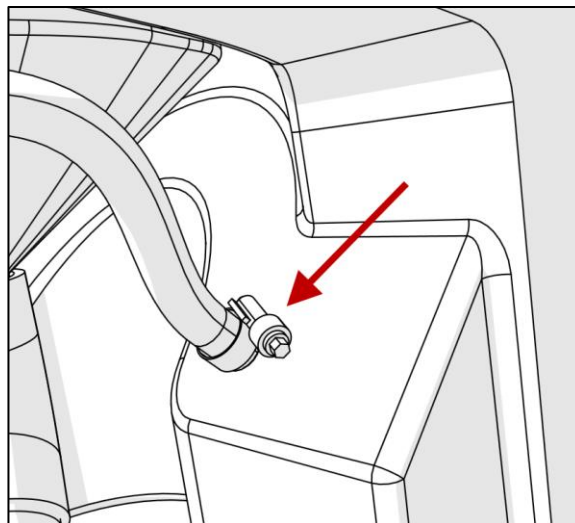


FIGURE 22

32. Plug the other end of the new hose to the tube that runs to the sump tank (Figure 23). Tighten the collar to this torque value:

Torque: 35-45 Lb-in

NOTE

*If the hose kinks, cut it one inch and reinstall it. Repeat this operation as necessary.
Use nylon ties if necessary.*

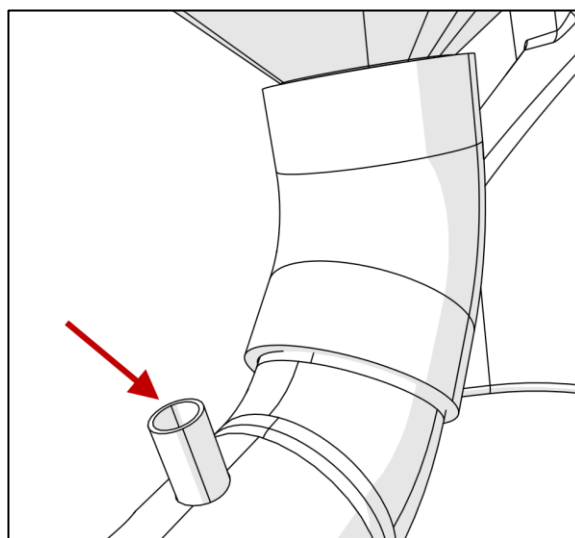


FIGURE 23

33. Reinstall the service opening panel with the screws (8) (Figure 24).

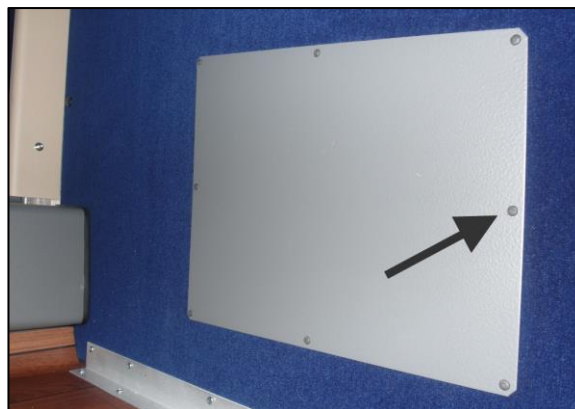


FIGURE 24

34. Reinstall the garbage cover stopper on the vehicle floor (Figure 25).



FIGURE 25

35. Reinstall the seats.

NOTE

This operation requires two workers to avoid injuries and vehicle damages.

36. Use mark on the rail you made before to position the seats (Figure 26).
37. Install screw (2) on the side wall rail that supports the seats. Tighten screws to this torque value:

Torque: 27 lb-ft (37 Nm)

38. If the old torque seal marks are not aligned, erase it and make new marks.



FIGURE 26

39. Install nuts (3) that fix the seat pedestal to the floor track (item 2, Figure 27).
40. Use mark on the rail you made before to position the seats.
41. Tighten nuts to this torque value:

Torque: 27 lb-ft (37 Nm)

42. If the old torque seal marks are not aligned, erase it and make new marks.
43. Install seat pedestal cover (item 1, Figure 27). This panel is retained by four (4) plastic retainers snapped in place to hold the panel. Use new retainers.

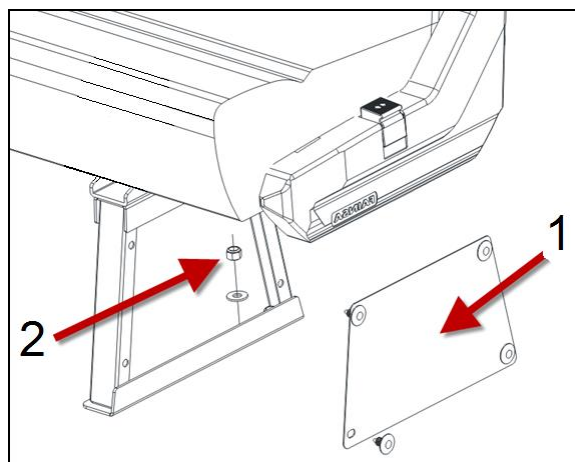


FIGURE 27

44. Reinstall rail cover in front of the seat pedestal (Figure 28).

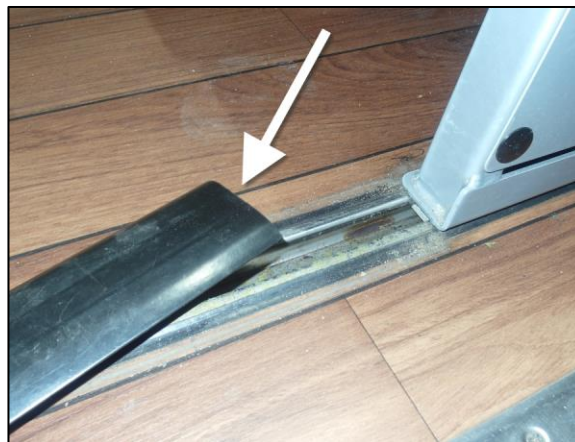


FIGURE 28

45. Reinstall the garbage and the garbage protector (Figure 29).
46. Clean the air intake box.
47. Install the grill inside the lavatory.
48. Check if there are any pieces of non-desirable objects into the fan cage and remove as necessary.
49. Reconnect the fan motor connector.
50. Bulletin is complete.

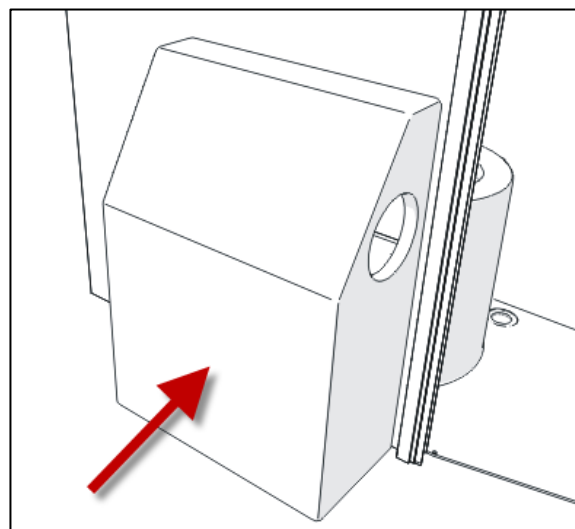


FIGURE 29

PARTS / WASTE DISPOSAL

Discard waste according to applicable environmental regulations (Municipal/State[Prov.]/ Federal)

ESTIMATED TIME

The time required to perform this bulletin is approximately two and half hours (2h30) plus one hour for glue cure time.