

**HYUNDAI**  
**Technical Service Bulletin**

GROUP <b>CAMPAIGN</b>	NUMBER <b>17-01-067</b>
DATE <b>NOVEMBER, 2017</b>	MODEL(S) <b>ELANTRA TOURING (FD)</b>

**SUBJECT:** INSTRUMENT CLUSTER LCD SCREEN INSPECTION AND REPLACEMENT (SERVICE CAMPAIGN T2N)

**\* IMPORTANT**

**\*\*\* Retail Vehicles Only \*\*\***

Dealers must perform this Service Campaign whenever an affected vehicle is in the shop for any maintenance or repair.

When a vehicle arrives at the Service Department, access Hyundai Motor America's "Warranty Vehicle Information" screen via WEBDCS to identify open Campaigns.

**Description:** On certain 2012 Elantra Touring (FD), the LCD screen display in the cluster may exhibit no illumination. If there is no illumination, the odometer, gear selection, and door ajar information will not be visible by the driver.

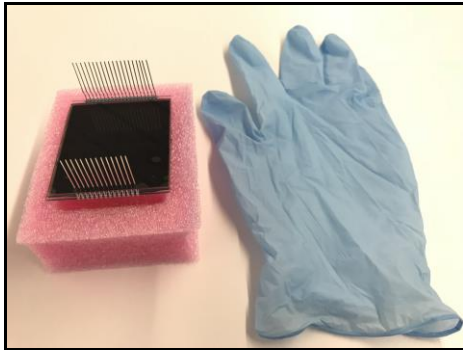
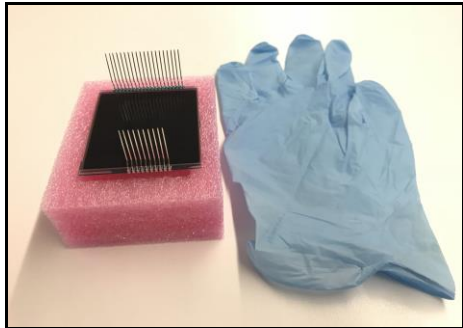
This bulletin describes the service procedure to replace the LCD screen to correct the display condition.



**Applicable Vehicles:** Certain 2012 Elantra Touring (FD)

**SUBJECT: INSTRUMENT CLUSTER LCD SCREEN INSPECTION AND REPLACEMENT  
(SERVICE CAMPAIGN T2N)**

**Parts Information:**

PART NAME	PART NUMBER	QTY.
LCD Screen Kit	 <p>96420-2L300QQH (Automatic Transmission) (20 pins top row, 14 pins bottom row)</p>	1
	 <p>96420-2L200QQH (Manual Transmission) (20 pins top row, 10 pins bottom row)</p>	1

**Tools Required:**

TOOL NAME	IMAGE
90 Degree Angle Pick	

**Warranty Information:**

MODEL	OP. CODE	OPERATION	OP. TIME	CAUSAL PART	NATURE	CAUSE
Elantra Touring (FD)	70C070R0	Cluster LCD Inspection	0.3 M/H	94011-2L050	M12	ZZ7
	70C070R1	Cluster LCD Inspection and Replacement	0.5 M/H			

**NOTE 1: Submit Claim on Campaign Claim Entry Screen**

**NOTE 2: If a part is found in need of replacement while performing Service Campaign T2N and the affected part is still under warranty, submit a separate warranty claim using the same Repair Order. If the affected part is out of warranty, submit a Prior Approval Request for goodwill consideration prior to performing the work.**

**Service Procedure:****INSTRUMENT CLUSTER REMOVAL**

1. Using a Phillips screwdriver, remove the two screws holding the cluster bezel cover.

Disconnect the wire harness connector and remove the cluster bezel cover.



2. Remove the four screws holding the instrument cluster.

Disconnect the wire harness connectors and remove the instrument cluster.



**INSTRUMENT CLUSTER INSPECTION**

1. If the manufacturing date is on or within February, 2012 to November, 2015, then replace the instrument cluster LCD screen.

If the manufacturing date is not within the date range mentioned above, then do not replace the instrument cluster LCD screen. Reinstall the instrument cluster and campaign is complete. Use labor op 70C070R0.



<p><i>Example:</i> <b>ELX</b></p>	<p>E: First digit represents the year. L: Second digit represents the month. X: Third digit represents the day.</p>	<p>E = 2009 L = December X = 24<sup>th</sup></p> <p>The instrument cluster was manufactured on December 24<sup>th</sup>, 2009.</p>
---------------------------------------	---	--

**Manufacturing Year:**

E	F	G	H	I	J	K	L	M
2009	2010	2011	2012	2013	2014	2015	2016	2017

**Manufacturing Month:**

A	B	C	D	E	F	G	H	I	J	K	L
Jan	Feb	Mar	Apr	May	Jun	Jul	Aug	Sep	Oct	Nov	Dec

**Manufacturing Day:**

A	B	C	D	E	F	G	H	I	J	K	L	M	N	O	P	Q	R	S	T	U	V
1	2	3	4	5	6	7	8	9	10	11	12	13	14	15	16	17	18	19	20	21	22
W	X	Y	Z	1	2	3	4	5													
23	24	25	26	27	28	29	30	31													

**Legend**

  = Code found on the instrument cluster label (Example: ELX)

  = Actual Date

## INSTRUMENT CLUSTER LCD SCREEN REPLACEMENT

1. Wear the provided gloves.

**⚠ CAUTION**

You **MUST** wear the provided gloves before starting the LCD screen replacement procedure. The gloves will prevent fingerprints from imprinting onto the instrument cluster.

Perform the LCD screen replacement on a clean surface bench to prevent any debris from entering the instrument cluster.



2. Carefully pinch the clear locking tabs around the instrument cluster to remove the clear plastic cover.

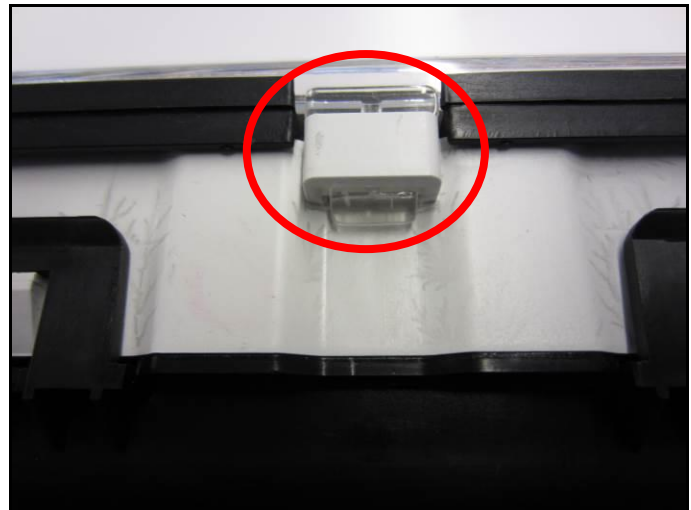


Image on the right illustrates the clear plastic cover removed.



**SUBJECT:**

**INSTRUMENT CLUSTER LCD SCREEN INSPECTION AND REPLACEMENT  
(SERVICE CAMPAIGN T2N)**

- Carefully pinch the black locking tabs around the instrument cluster to remove the black cover.

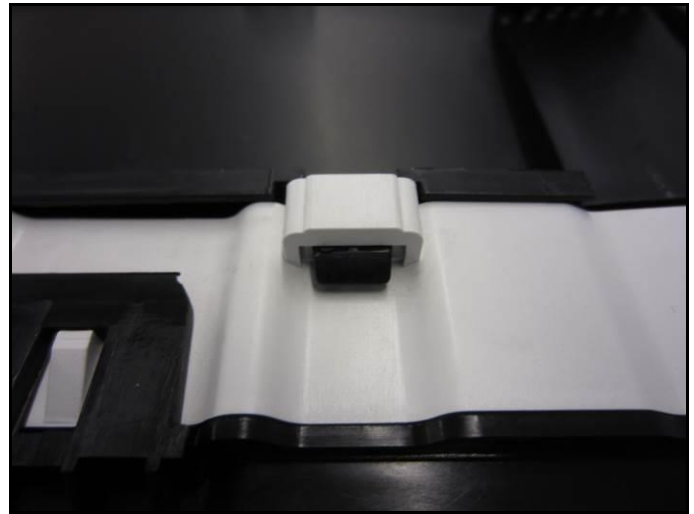
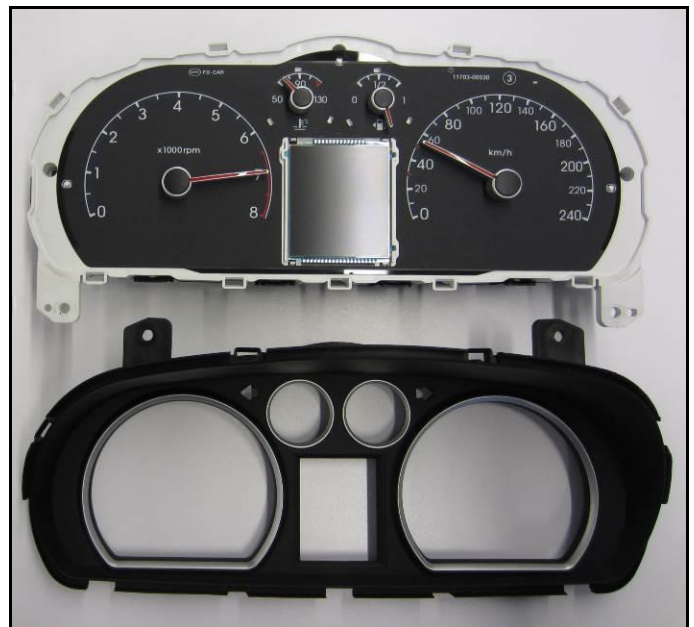


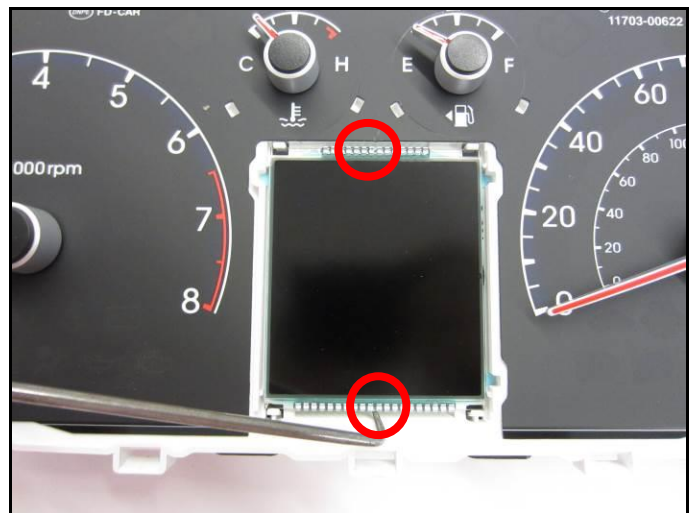
Image on the right illustrates the black cover removed.



- Use a 90 degree angle pick and carefully pry upward at the two locations (center of the LCD screen) shown in the pictures.

**NOTICE**

The pick is placed in center of the top and bottom of the LCD screen.

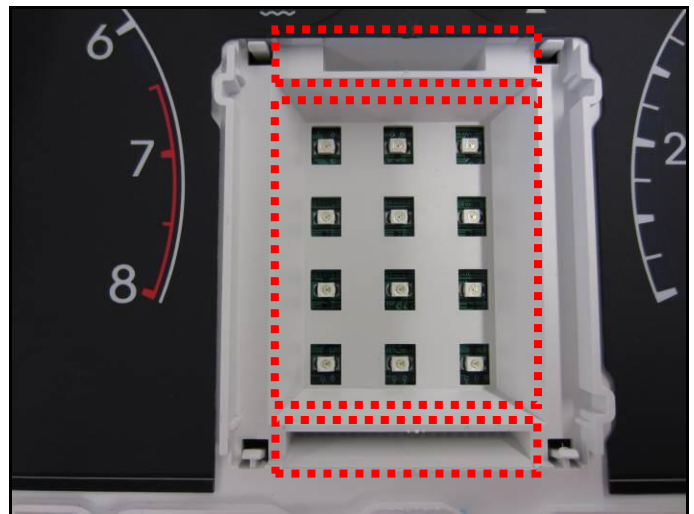


5. Remove the LCD screen and discard.



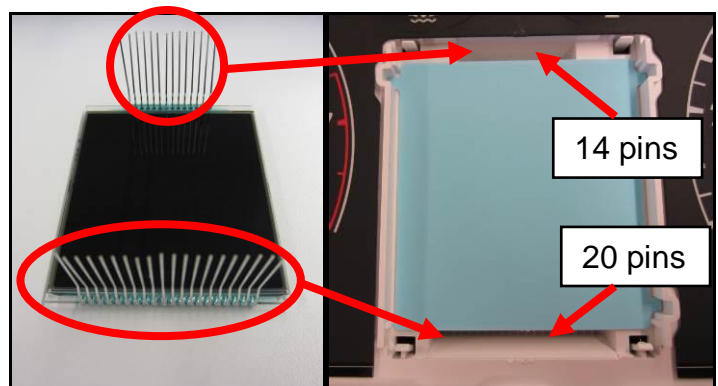
6. Lift upward and remove the blue LED light cover.

Use a shop air gun and clean the LED lighting area and pins locations.

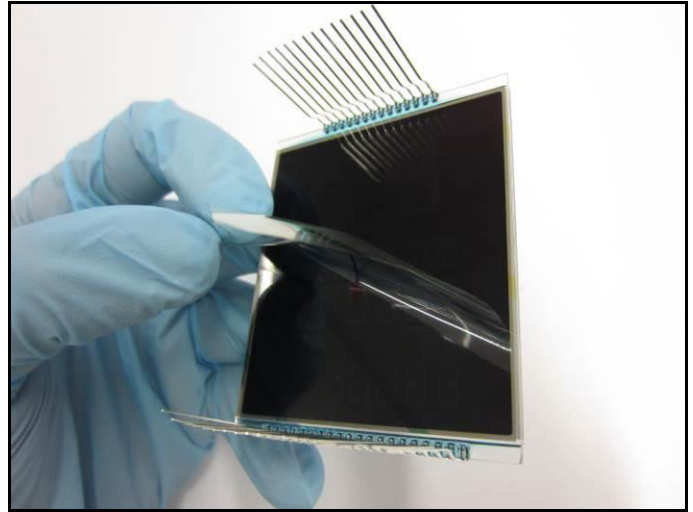


**NOTICE**

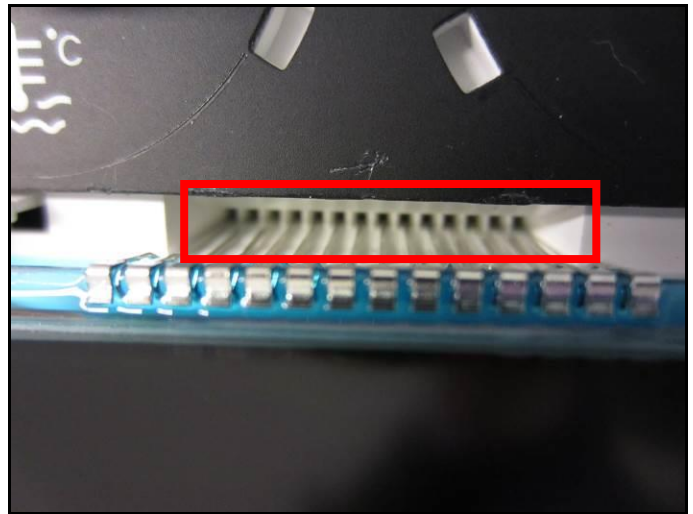
**Example: Automatic transmission vehicle, there are 14 pins and 20 pins sides. When installing the LCD screen, align the pins to its appropriate location.**



- Before installing the new LCD screen, remove the bottom protective film.



- Carefully align the pins to the correct position. Assure no two pins are positioned to one hole.



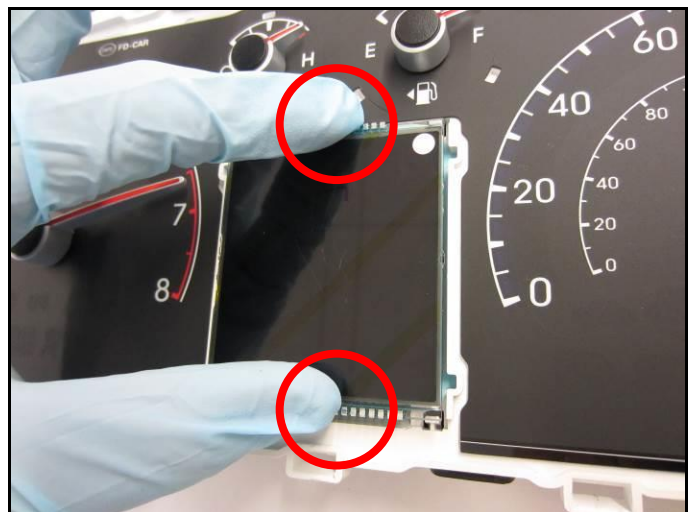
- Gently press down on the two locations as shown in the picture.

**NOTICE**

The LCD screen only requires minimal pressing force to be fully seated. If it does not seat smoothly, then two pins were seated into one hole. Simply remove the LCD screen, adjust the pins, and reinstall.

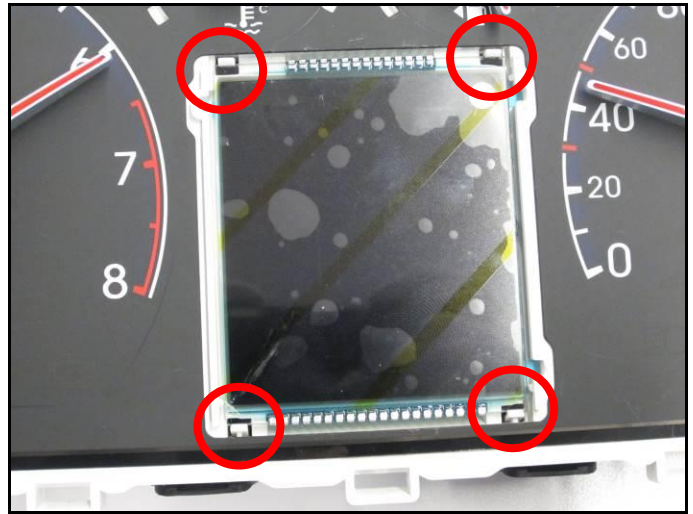
**CAUTION**

Do not press at the center point of the LCD screen. Pressing at the center point may cause the LCD screen to crack.

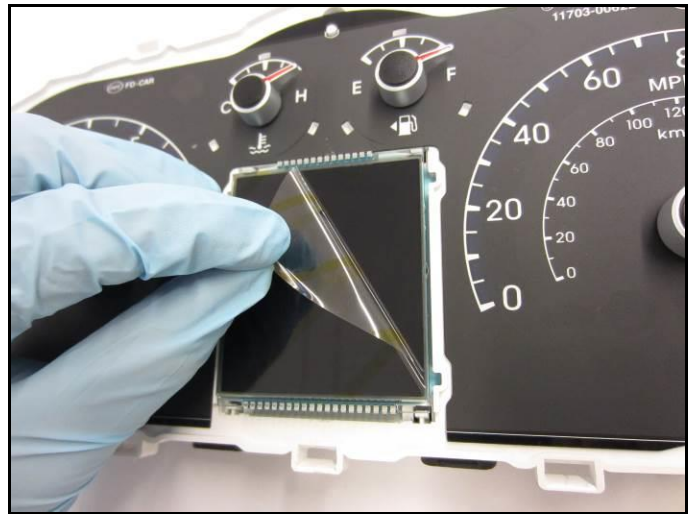




10. Press the LCD screen in until the four locking tabs are in place.



11. Remove the top protective film cover.



12. Install all removed parts in reverse of removal.

13. Confirm the instrument cluster LCD screen is displaying and operating normally.

**NOTICE**

**If the LCD screen is not displaying and operating normally, then replace with another new LCD screen.**

