



Countries: AUSTRALIA, BRAZIL, CANADA, UNITED STATES, SOUTH AFRICA
Availability: ISIS, Bus ISIS, FleetISIS
Major System: BUS BODY
Current Language: English
Other Languages: [Français](#), [Español](#)
Viewed: 3743
Document ID: IK2200016
Revision: 6
Created: 11/21/2006
Last Modified: 9/15/2015
Author: Al Schnellenberger

[Less Info](#)

		Coding Information					
Copy Link 	Copy Relative Link 	Bookmark View My Bookmarks	Add to Favorites 	Print 	Provide Feedback 	Helpful 520	Not Helpful 584

Title: Post Trip Inspection System Will Not Disarm or Does Not Operate Correctly

Applies To: All buses with sales codes 0047MYZ and 0047MAH

CHANGE LOG

Please refer to the change log text box below for recent changes to this article:

09/15/2015 - Added keywords to article
--

DESCRIPTION

NOTE:

This DOES NOT apply to buses equipped with other post trip systems such as Child Reminder System (CRS – Feature Code: 0047BGR, 047DXR, or 0047MZP) or Child Check Mate.

Hook up the breakout box to the ESC or Body Controller and trigger the system by following the normal procedure described below. To properly disarm the system the key must be turned off and then back to accessory only. The correct signals for the changes to ignition and accessory power must be seen for the system to operate properly.

On pre 2007 vehicles, with the ESC

With the alarm triggered, jump pin 7 (PTI input) and pin 3 (ZVR output) together on the 1600 connector on the ESC. The 1600 connector is the gray connector on the side of the ESC that has only two connectors. If the system disarms, the problem is not in the ESC. Troubleshoot Post Trip Inspection circuits. Refer to S08291 chapter 9 sheet 2.

On post 2007 vehicles, with the Body Controller

With the alarm triggered, jump connector 1600 pin A2 (PTI input) and connector 1602 pin E7 (ZVR output) together. If the system disarms, the problem is not in the Body Controller. Troubleshoot Post Trip Inspection circuits. Refer to S08329 Chapter 10 Sheet 2.

Post Trip Inspection Operation-Code 0047MAH, (See note below)

The post trip inspection system causes the horn to sound and the headlights to flash if the driver does not open and close the rear emergency exit prior to exiting the bus. The intent of this system is to cause the driver to walk the length of the bus interior and scan for students who may still be in the bus. The system utilizes the ESC and is armed if the service door is opened and the red PWL are energized (normal requirements for loading students). The armed system is then triggered when the key switch is moved out of the ignition position. Once the system is triggered, the headlights begin to flash and the EGC alarm sounds to remind the driver to check the bus for children. If the system is not disarmed after being triggered for one minute, the bus electric horn will be cycled by the ESC for an additional ten minutes. To disarm the system, the following must occur:

NOTE:

Code 0047MYZ requires that a push button be pushed above the rear emergency exit as apposed to lifting the emergency exit handle and returning it to the locked position. Other than the disarming mechanism (push button vs. exit handle movement), the systems are the same.

NOTE:

If the buzzer, in the cluster, does not operate with this feature but works with other features, check the power and ground circuits to the cluster. A missing voltage will cause this problem.

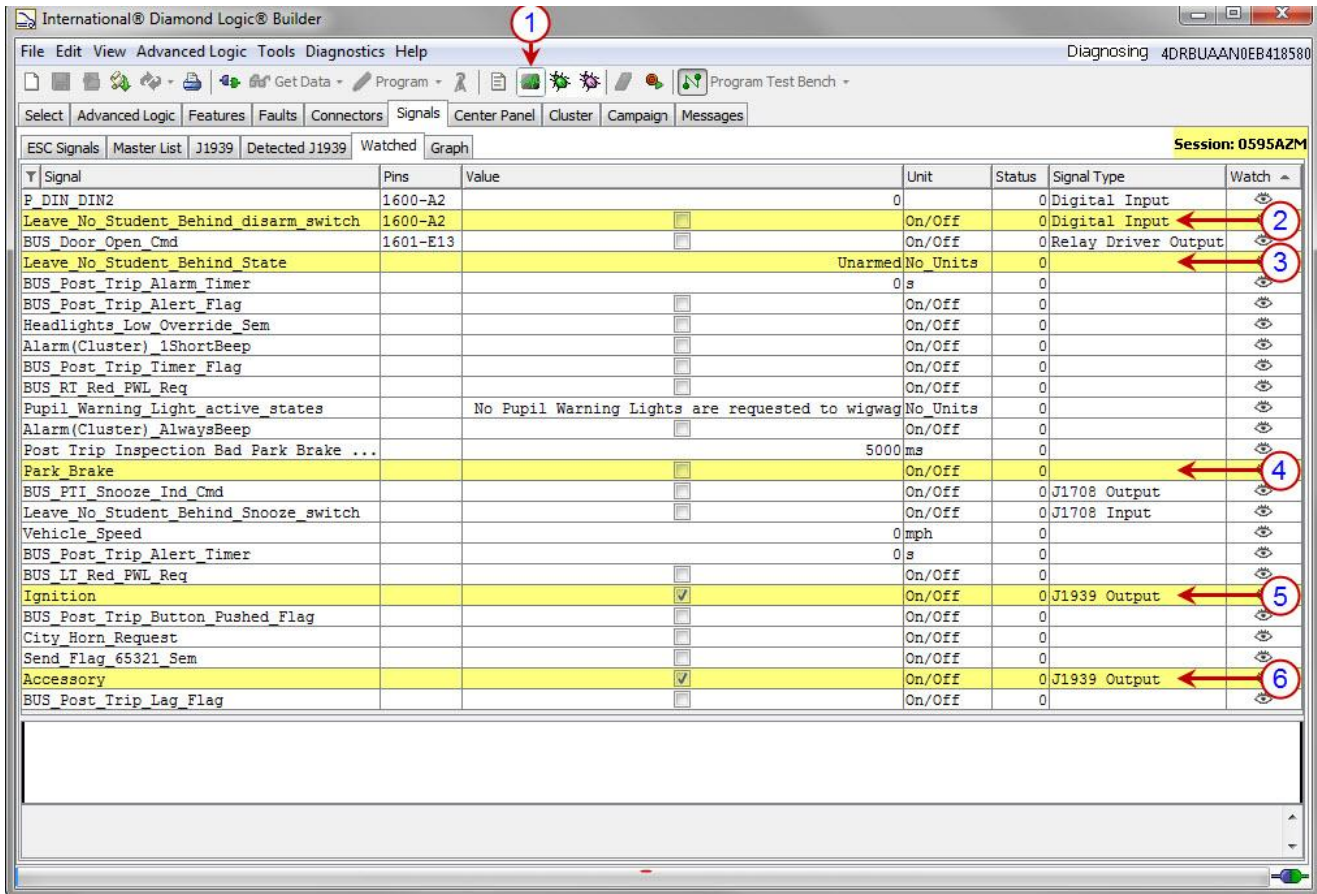
- Use DLB to make a session from the Post Trip Inspection feature code.
- [Follow IK2600008 - How to Diagnose Electrical Problems with Diamond Logic Builder](#) for assistance with making a session from a feature code.
- This will display the signals that apply to this feature.

STEPS

The following items must be seen in order for the system to Disarm:

1. Set park brake. (The ESC must see good status for brake switch)
2. Place key switch in the accessory position. (The ESC must see the transition of ignition turning off, and accessory coming back on)
 - When the key is turned off the check mark for IGN and ACC voltage must go away
 - When the key is turned back to the ACC position the check mark for ACC should be the only check mark that comes back
 - If you do not have the correct IGN and ACC check marks during this process the system will not disarm properly.
3. Lift the rear emergency exit handle and return handle to the locked position
 - This is the digital input signal for the **Leave_No_Student_Behind_disarm_switch** signal to the ESC

Watch the signals to see if they activate. Watch the **Leave_No_Student_Behind_State** to see if it changes as described in the diagram below.



1. Make sure you are in Diagnose Mode
2. Ground signal input from the emergency exit at the rear of the bus
3. State of the Post Trip Inspection system (See Diagram Below)
4. Park Brake Signal
5. Ignition Signal
6. Accessory Signal

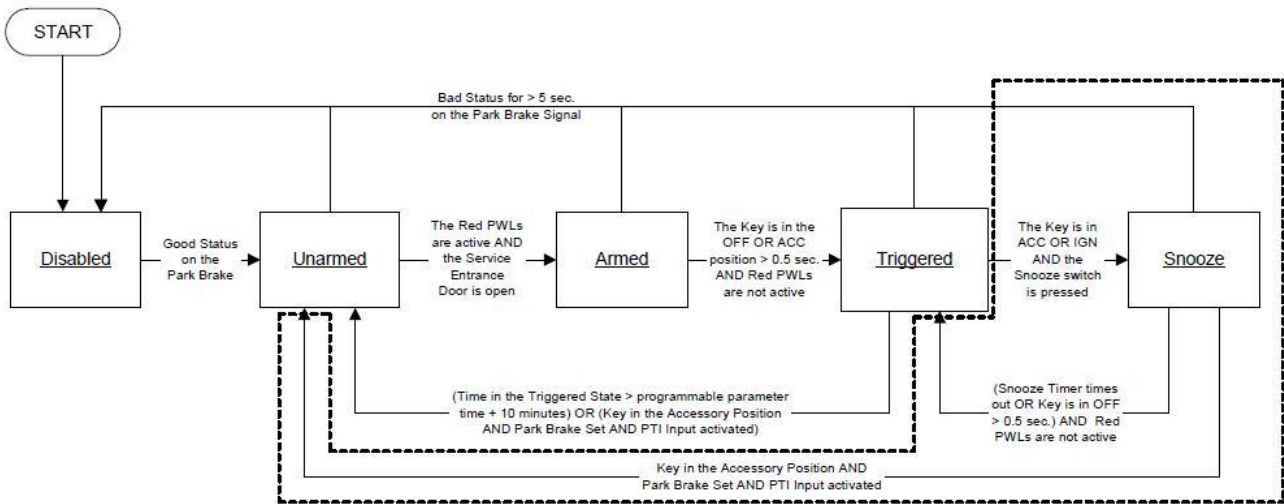


Figure 1 – Overview of Post Trip Inspection feature

Hide Details

Feedback Information

Viewed: 3742
 Helpful: 520
 Not Helpful: 584

No Feedback Found