



903 South Main Street • P.O. Box 460 • Middlebury, IN 46540 • (574) 825-5861 • Fax (574) 825-7354

November 2017

Technical Service Bulletin Notification TSB #17-013

Dear Valued Dealer:

Jayco has determined that certain Model Year 2018 25BH (JJ) and 27RL (JA) Jay Feather and 29BH (4A), 28RL(4L), 30RD(4D), and 29RE (4Y) White Hawk travel trailers require installation of bulb seal around the slide out.

Our records indicate that the following unit is currently part of the inventory at your dealership and requires the Bulletin repair prior to being retail sold:

Serial Number

If you have sold this affected vehicle, please contact the current owner regarding this Service Bulletin and process the Warranty Registration for this customer. All pertinent information regarding this Bulletin is on file under the Service and Parts Tab of Jayco Partners. If you have questions regarding this Service Bulletin, please contact Jayco Customer Service at 800-283-8267.

We apologize for any inconvenience this may cause.

Sincerely
Jayco Towables

TECHNICAL SERVICE BULLETIN



TSB# 17-013
Job Code 9801365
Series/Flat Rate .5 hr

Date of Publication November 2017

REQUIRES PARTS KIT

ACTION REQUIRED

Install bulb seal around slide out.

AFFECTED UNITS

2018 Jay Feather J1JA0075-0152
J1JJ0261-0350
2018 White Hawk J14A0189-0248
J14D0081-0098
J14L0207-0296
J14Y0051-0103

PARTS KIT 17-0013JT

Note: Kit can only be ordered using the order form included with this bulletin.

2 - Screws #8 x 1" Quad PH SDS
24 Ft piece of Bulb Seal – NOTE: only the JA models will require all 24FT - all other models only require 23Ft

Misc. Tools and Supplies

Screw gun with #2 square bit
Open end wrench 1-1/8"
Isopropyl Alcohol & clean rags



"D" Bulb Seal

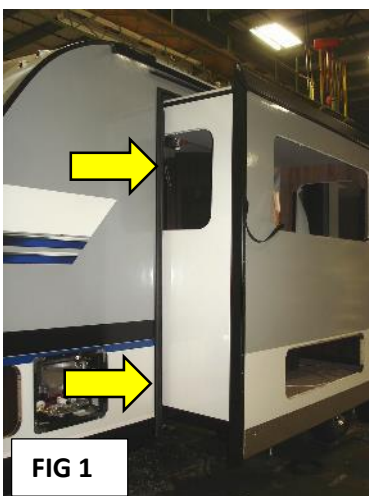


FIG 1

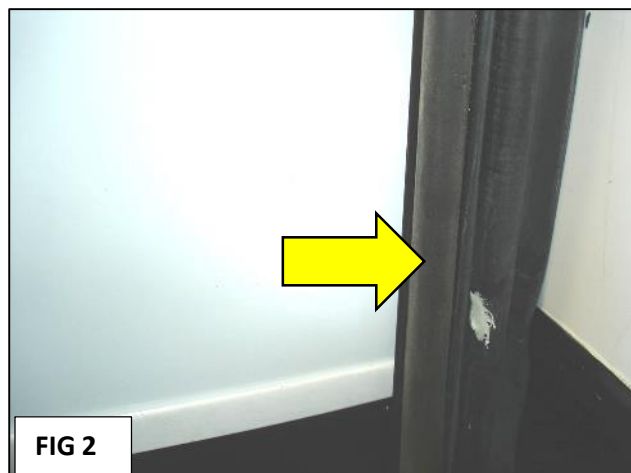


FIG 2

EXTEND THE SLIDE-OUT.

FIG 1: Bulb seal is located on the trailer body around the slide-out opening (arrows).

FIG 2: There should be two seals on the trailer body around the slide-out. The missing seal is the smaller outer - bulb seal. **NOTE:** An adjustment is required to the Bell Inlet Stop under the slide out, once the bulb seal is installed.

REPAIR INSTRUCTIONS

SLIDE-OUT SHOULD BE EXTENDED FOR THE REPAIR.



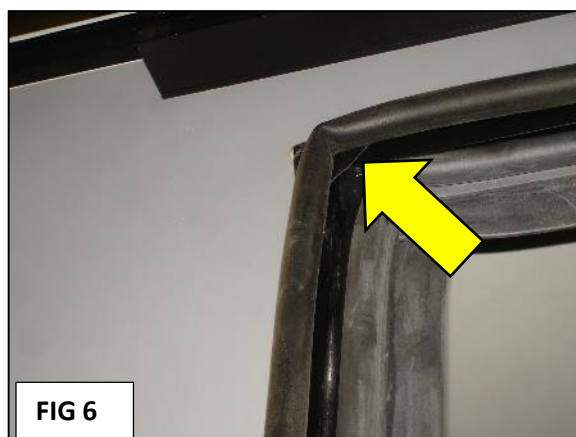
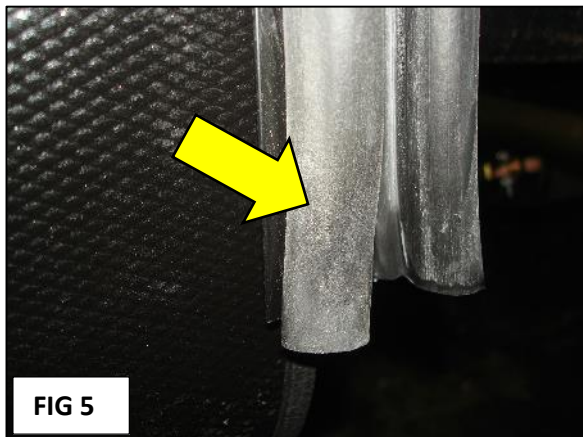
STEP 1:

FIG 3: Prepare the surface where the bulb seal will be attached.

Wipe the metal trim with isopropyl alcohol and a clean rag.

Wipe the full length of both side trims and the top trim above the slide-out opening.

FIG 4: Apply Pro Bond adhesive promoter to the same 3 surfaces with a second clean rag.



STEP 2:

FIG 5: Begin installation at the bottom of one side of the slide-out.

STOP: DO NOT PRESS THE END OF THE SEAL TIGHTLY TO THE TRIM YET!

LEAVE ABOUT 1-1/2 INCHES OF THE SEAL LOOSE AT THE END.

Remove backer strip to expose the adhesive, then apply the seal to the trim.

The seal should hang past the end of the trim about 1/4 to 1/2 inch.

Press the seal to the side trim, and all the way up to the top corner.

FIG 6: Stick the "D" seal to the triangular piece in the corner and then make a 90 degree turn with the seal.



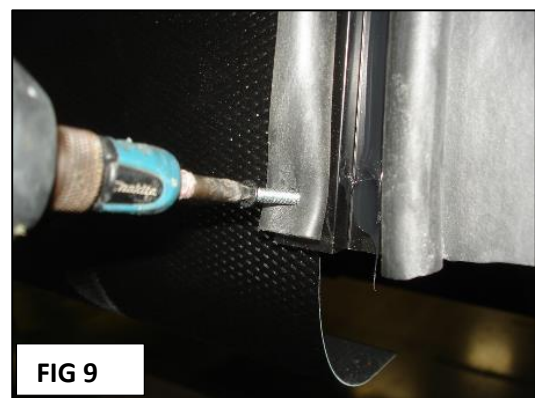
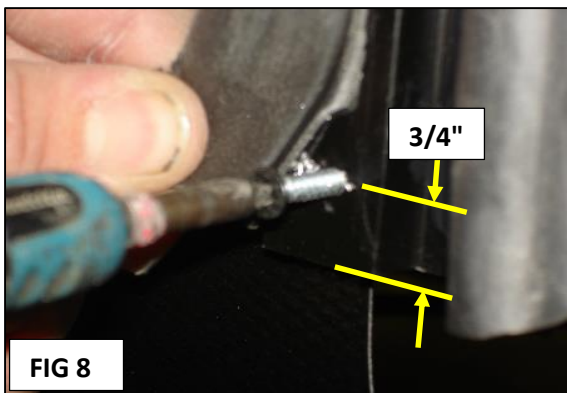
FIG 7: Press the seal firmly at the bend making sure it sticks tightly in the corner.

STEP 3:

Continue pressing the "D" seal to the trim across the top of the slide-out opening. When you reach the other corner, repeat **Fig 7** and **Fig 8** making a 90 degree turn with the seal. Continue down the other side, pressing the seal on the trim all the way to the bottom.

**STOP: DO NOT PRESS THE END OF THE SEAL TIGHTLY TO THE TRIM YET!
LEAVE 1-1/2 INCHES OF THE SEAL LOOSE AT THE END.**

The seal should extend past the end of the trim 1/4 to 1/2 inches.



STEP 4:

FIG 8: Install a screw from the kit at the bottom of the seal on each side of the slide-out. **Pre-drilling a hole prevents the rubber seal from wrapping around the screw as it goes in.** Pull up the end of the seal so a hole can be drilled in the black metal trim.

Use one of the self-drilling screws to make the hole. The hole should be up 3/4 inches from the end of the trim and centered on the trim.

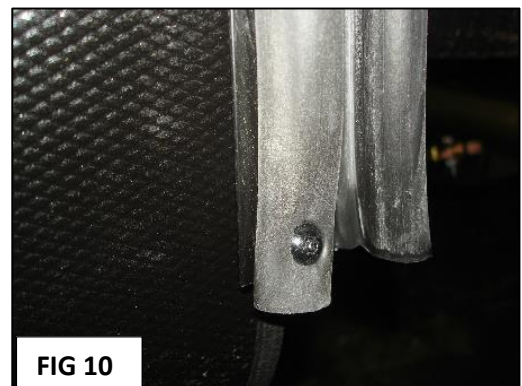
Place the seal over the hole and press it down.

FIG 9: Run the screw through the rubber seal and into the hole drilled in **Fig 8**.

Press the seal tight to the black trim.

Repeat Step 4 for the other side of the slide-out.

FIG 10: Shows the screw installed at the end of the rubber seal.



BELL STOP INLET ADJUSTMENT

The Bell Stop Inlet must be adjusted so the slide will not smash the gasket or damage the side of the coach when the slide-out is closed.

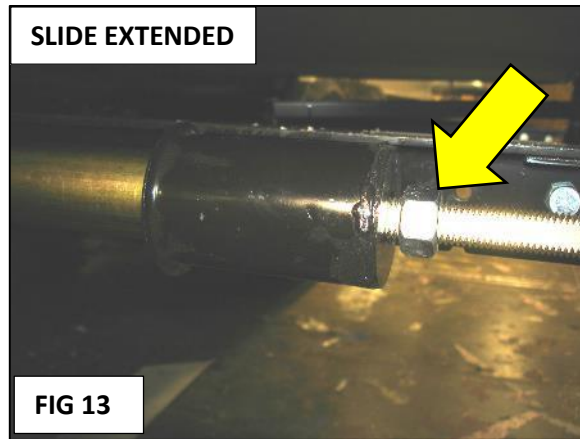
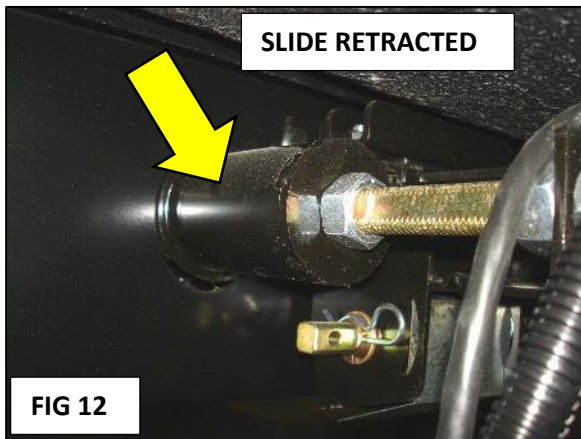


FIG 12: The Bell Stop Inlet is the black "can" shaped device under the slide-out.
There is only one Bell Stop on a slide-out.

FIG 13: To adjust the Bell Stop Inlet: **EXTEND THE SLIDE-OUT.**
Turn the Bell Stop Inlet "can" in toward the trailer 1/4" to 1/2" from the nut as shown.
Hold the Bell Stop Inlet "can" with one hand.
Place the 1-1/8" open end wrench on the large nut (arrow).
Turn the nut in towards the "can" until it is snug against the "can".

DO NOT OVERTIGHTEN AS IT WILL START TURNING THE BELL STOP INLET!

This will prevent the slide-out from smashing the "D" seal, or hitting the side of the trailer.
Run the slide **IN** and it should contact the "D" seal but it should not smash it flat.
If it requires further adjustment, run the slide-out, turn the Bell Stop Inlet a little more.
Snug the nut to the "can" and bring the slide **IN** to check again.

Jayco Service / Parts
 TSB Order Form
 Fax (800) 825-8409



TSB 17-013
Slide Out Bulb Seal

Dealer Name: _____

Dealer Account Number: _____

Phone: _____ Fax: _____

Ship To: _____

P.O.# _____

Attn: _____

Ship Via: _____

Each unit serial number MUST be recorded when ordering.

Quantity Ordered	Serial Number of Unit (Last 8 Digits)	Part Number <i>One Kit per Unit</i>	U/M	Unit Price	
1		17-013JT KIT, Bulb Seal	9801365	EA	N/C
1		17-013JT KIT, Bulb Seal	9801365	EA	N/C
1		17-013JT KIT, Bulb Seal	9801365	EA	N/C
1		17-013JT KIT, Bulb Seal	9801365	EA	N/C
1		17-013JT KIT, Bulb Seal	9801365	EA	N/C
1		17-013JT KIT, Bulb Seal	9801365	EA	N/C
1		17-013JT KIT, Bulb Seal	9801365	EA	N/C

THESE PARTS CAN ONLY BE ORDERED USING THIS FORM.
You can not order using the website.



903 South Main Street • P.O. Box 460 • Middlebury, IN 46540 • (574) 825-5861 • Fax (574) 825-7354

November 2017

Technical Service Bulletin Notification TSB #17-013
Unit Serial Number:

Dear Valued Customer:

Jayco has determined that certain Model Year 2018 25BH (JJ) and 27RL (JA) Jay Feather and 29BH(4A), 28RL(4L), 30RD(4D), and 29RE (4Y) White Hawk travel trailers require installation of bulb seal around the slide out.

Our records indicate that your travel trailer is affected by this Service Bulletin. Please contact your nearest Jayco dealer to schedule an appointment and present this letter as authorization to have the procedure completed at **no cost** to you.

If you have sold or traded your vehicle, or for any reason cannot have this service performed, please contact the Jayco Customer Service Department at 800-283-8267.

We apologize for any inconvenience this may cause.

Sincerely,
Jayco Towables