



QUICK INSTALL

J-49225 Routan TPM-RKE Analyzer

Software Installation



TABLE OF CONTENTS

Software Installation

| | |
|---|-----------|
| 1. SCOPE | 3 |
| 2. DRIVER INSTALLATION | 3 |
| 2.1. Before You Get Started | 3 |
| 2.2. Windows Operating Systems Driver Installation..... | 3 |
| 2.3. Uninstalling the TPM-RKE Driver | 5 |
| 3. DRIVER INSTALLATION VERIFICATION | 6 |
| 4. INSTALLATIONS ERRORS | 8 |
| 4.1. Administrator rights | 8 |
| 4.2. Windows© Wizard | 9 |
| 5. APPLICATION SOFTWARE UPDATES / INSTALLATION | 10 |
| 5.1. Before You Get Started | 10 |
| 5.2. Application Software Installation Procedure | 10 |

Software Installation

TPM-RKE ANALYZER

1. SCOPE

The goal of this document is to instruct the TPM-RKE Analyzer users on installing the following software:

1. TPM-RKE Analyzer software drivers onto the PC or laptop computer
2. TPM-RKE application software updates to the TPM-RKE Analyzer

2. DRIVER INSTALLATION

2.1. BEFORE YOU GET STARTED

Before driver installation, ensure that you have the following:

1. **TPM-RKE Analyzer Tool**
2. **USB cable provided in the TPM-RKE Analyzer tool kit**
- 3.

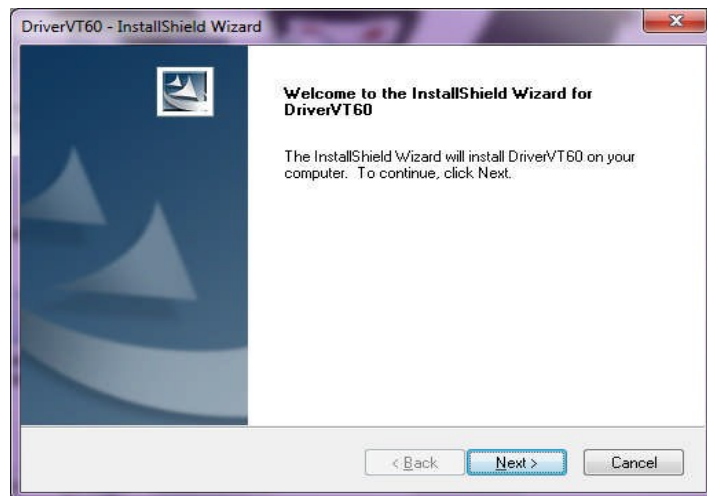
NOTE: You can download the latest version of the Analyzer installer on [ServiceNet / Special Tools and Equipment / J-49225 Routan TPM RKE Analyzer](#)

4. **PC or laptop computer administrator rights**

NOTE: If you do not have administrator rights, the driver installation will abort. To obtain administrator rights please contact your IT manager or administrator.

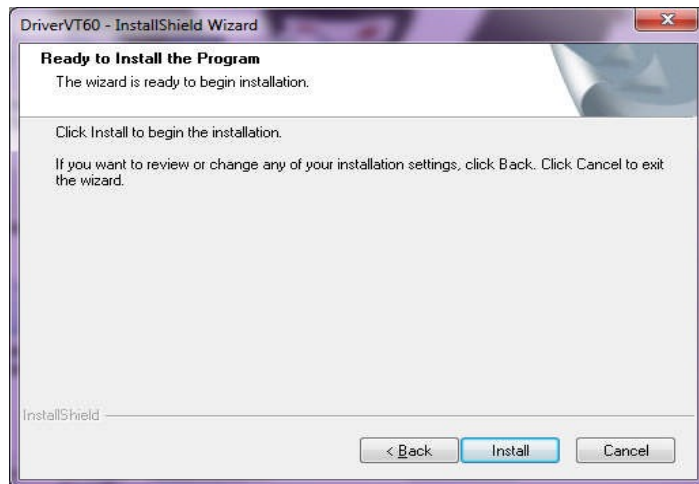
2.2. WINDOWS 7 OPERATING SYSTEM DRIVER INSTALLATION

- 1) Launch the **TPM RKE analyser installer** software (TPM_RKE9936DriverInstaller.exe) and the following Security Warning screen appears: Click on **"Next"**

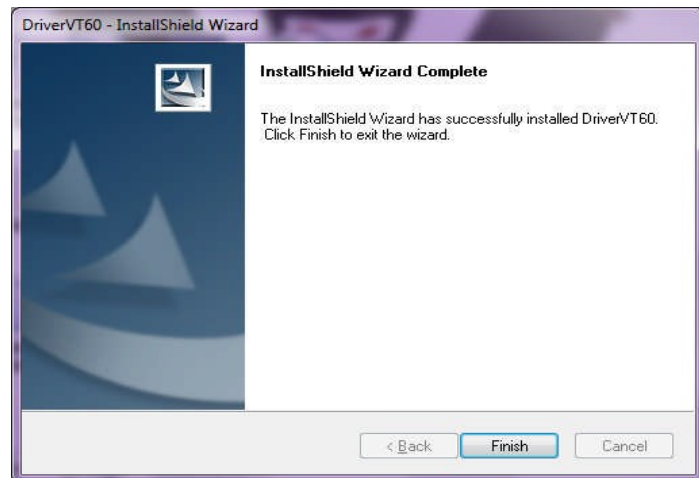


2) Click on "Install"

Note: if a different screen appears, for example Account control; make your selection to allow the installation.



3) Then following Driver Installation screen appears: Click "Finish"



4) When the Windows Security window appears. Click on the "Install" button.

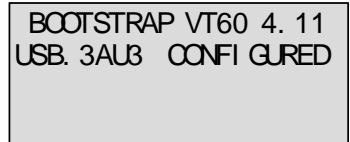


- 5) When the Windows® Security window appears again. Click on the **"Install this driver software anyway"** button.



- 6) The next step is completed automatically and the driver is installed and ready to use.

- 7) On the screen of the TPM-RKE Analyzer, the message "Configured" appears to confirm the successful installation on this instrument.



Now the TPM software drivers are installed on the connect PC or laptop forever. Every time you connect the **TPM-RKE Analyzer**, the instrument will be recognized.



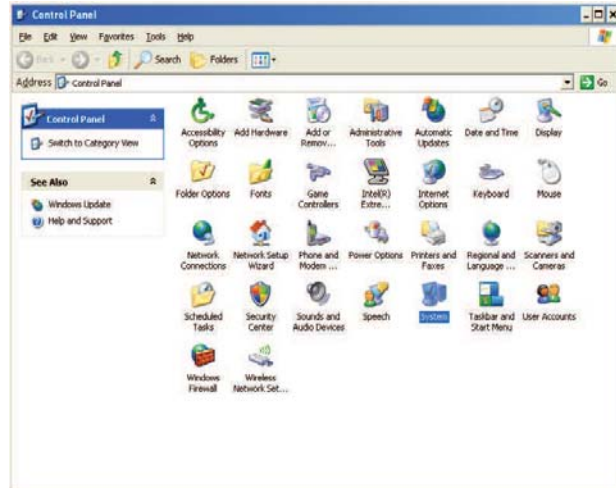
NOTE: To switch off the **TPM_RKE Analyzer** press on the **TEST** key.

2.3. UNINSTALLING THE TPM-RKE DRIVER

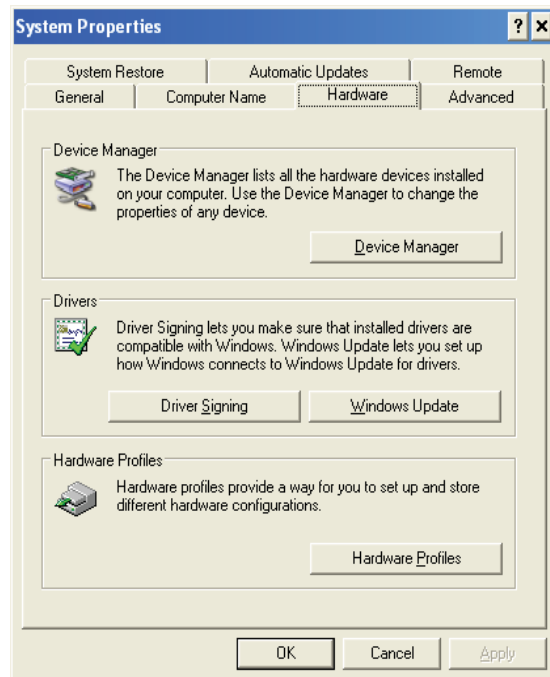
- 1) To uninstall the TPM-RKE driver, launch the TPM-RKE Analyzer installer software, "TPM_RKE9936DriverInstaller.exe" and click on the **"Uninstall"** button.

3. DRIVER INSTALLATION VERIFICATION

To check the installation of the drivers, connect the TPM-RKE Analyzer to the USB port of your computer and switch it on.



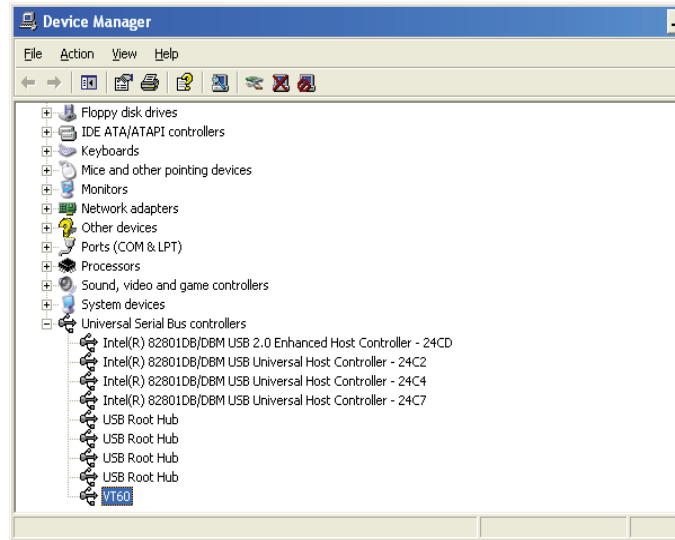
1) Go to the Windows© **Control Panel**





2) Double click on the "**System**" icon and then select the "**Hardware**" tab.

3) Click on the "Device Manager" button and all the hardware components will appear.

4) Go to the "Universal Serial Bus controllers" line and double click on see the components.



5) You will see one of the two following icons:

- 
 This confirms that the TPM-RKE Analyzer software drivers have been successfully installed
- 
 This confirms that the TPM-RKE Analyzer software drivers have NOT been installed

4. INSTALLATIONS ERRORS

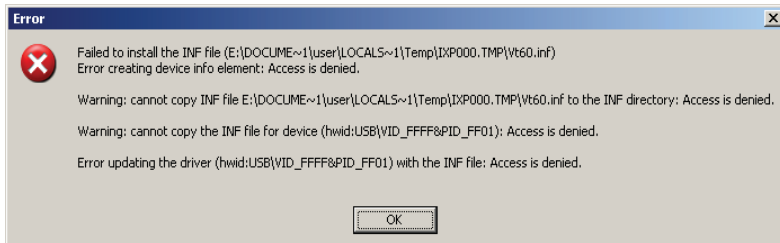
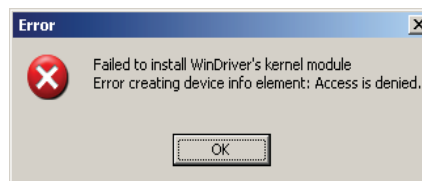
4.1. ADMINISTRATOR RIGHTS

- 1) To install this software driver, you must have the "Administrator" rights.

To obtain administrator rights please contact your IT manager or administrator.



- 2) If you do not have administration rights to install the drivers, the following error messages appears

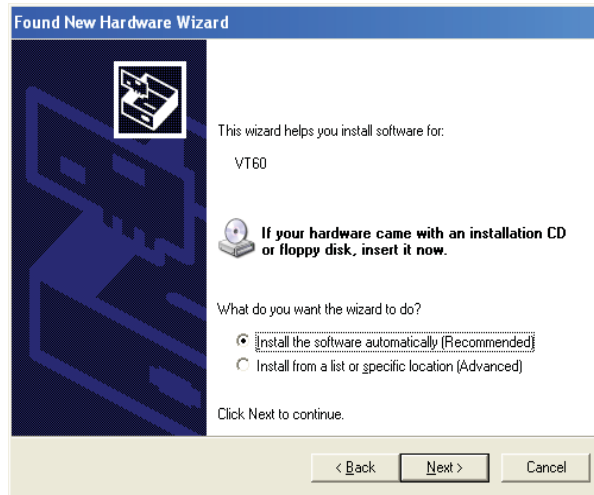


- 3) If you do not have administration rights, you will be prompted to login as an administrator



4.2. WINDOWS® WIZARD

During the software installation the following screen may appear to request you to install the instrument via the Windows® Wizard installer.



In this case, press on **"Cancel"** button to avoid this procedure and allow the **TPM-RKE Analyzer** software to install.

5. APPLICATION SOFTWARE UPDATES / INSTALLATION

5.1. BEFORE YOU GET STARTED

Before application program installation, ensure that you have the following:

1. TPM-RKE Analyzer Tool
2. USB cable provided in the TPM-RKE Analyzer tool kit
3. TPM-RKE Analyzer application software updates

NOTE: You can download the latest version of the Analyzer software updates on [ServiceNet / Special Tools and Equipment / J-49225 Routan TPM RKE Analyzer](#)




4. PC or laptop computer with the TPM-RKE Analyzer driver software installed

5.2. APPLICATION SOFTWARE INSTALLATION PROCEDURE


This procedure allows the user to update the software on the TPM-RKE Analyzer.

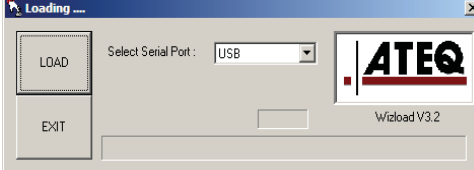
NOTE: You will need to connect the USB cable between the computer and the TPM-RKE Analyzer.

NOTE: The TPM-RKE Analyzer driver software must be installed first.

| | |
|--|---|
| <p>1) Press and hold the  and the  at the same time.</p> |  |
|--|---|

NOTE: In case of error, press the  key to exit from this menu.

| | |
|---|---|
| <p>2) When the USB cable is connected, "CONFIGURED" appears on the screen.</p> |  |
|---|---|

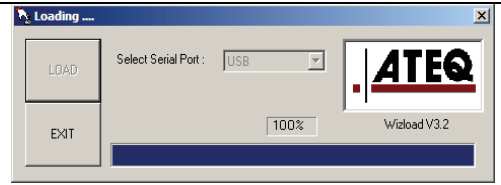
| | |
|---|--|
| <p>3) On the computer, open the attached file (.exe) and a dialogue box like the picture to the right will appear.</p> <p>4) Verify that the selected serial port is USB and then click on the "LOAD" button.</p> |  |
|---|--|

NOTE: In case the device TPM-RKE is not connected, this display appears:



The loading progress bar is displayed
When completed (100%) the program is installed

5) Click on the "EXIT" button to close the program.



The TPM-RKE Analyzer will boot to the main menu

6) Now it is possible to disconnect the USB cable from the PC and the TPM-RKE Analyzer.

```
MAIN MENU
> RKE TEST
  TPM FUNCTI ONS
  SETTI NGS
```