



Technical Tip

Topic	01-17-08TT – Precautionary Steps - Campaign 23U3 and Error ERP0203E
Market area	United States 444 Volkswagen of America, Inc. (6444)
Brand	Volkswagen
Date	August 21, 2017

Condition

ATTENTION:
THIS IS A TECH TIP, NOT A TECHNICAL BULLETIN.
TECH TIPS ARE NOT ASSOCIATED WITH WARRANTY CLAIMING.

Precautionary Steps - Campaign 23U3 and Error ERP0203E

Model(s)	Year	Eng. Code	Trans. Code	VIN Range From	VIN Range To
Jetta, Jetta Wagon, Golf, Beetle, Beetle Convertible	2009-2017	2.0I TDI (CJAA, CBEA)	All	All	All

Technical Background

When performing campaign 23U3 these are some precautionary steps that can be taken to prevent ODIS displaying “ERP0203E The operating conditions for the modification are not met”. Check the operating conditions in the work instructions (Technical Product Information).

Service

Use this information to assist when diagnosing why “operating conditions for the modification are not met” is displaying in ODIS. This can include the Vehicle Electrical System Control Module -**J519**- or door switch concerns.



Tip:

Model Year 2009 vehicles will not have Address Word 09 – J519 software updated. If you are receiving the ERP0203E message then there are other vehicle conditions that have not been met.

- Vehicle battery voltage not sufficient – Example, three faulty battery maintainer notifications.
- Manually check battery voltage with a DVOM at the battery post, or monitor a MVB for Terminal 30 / Battery voltage on the vehicle. Voltage value is best near 13 volts.

Read measured values					
Address	ID	Measured value	Value	Unit	Target value
0009	31.2	Battery voltage filtered	11.95	V	5 <= x <= 17.75

Figure 1

- Address Word 09 - J519 not identified or communicating during the initial GFF Log interrogation.
- The J519 did not respond or stopped communicating before 23U3 was started.
- Open the L/F door, activate the hazard lights and cycling “Lock to Unlock”, should wake up the CAN BUS for the J519. This is published in the 23U3 circular.

Exception: J519 remains grayed out on the ODIS screen.

- If the ODIS screen remains with the J519 grayed out, it needs to be re-identified before 23U3 is reattempted.
- You must right click on Address Word 09 - J519, and identify control module.
- If there is a version of this module to choose, select “09 – Vehicle electrical system control module” (Figure 2). You may be required to interrogate the J519 for faults to satisfy ODIS communication with J519.

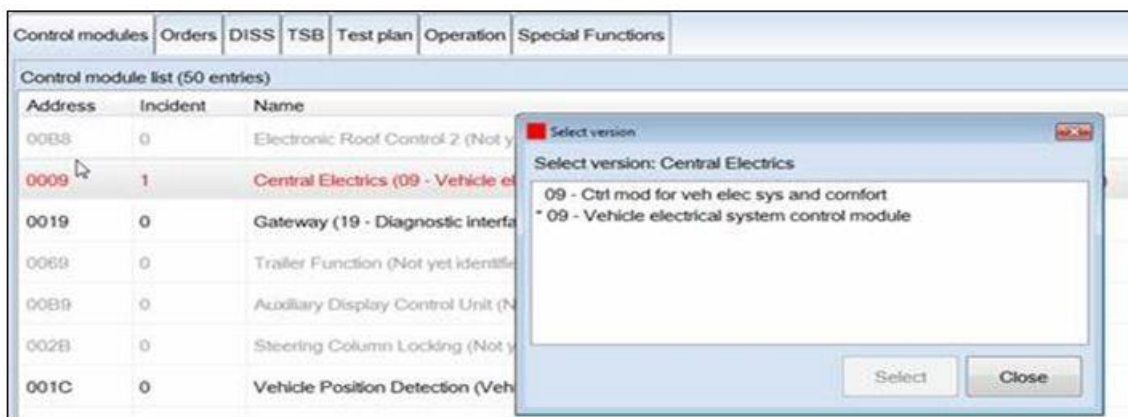


Figure 2

- With the L/F door open, the MFI displays open but MVB in Address Word 09 – J519 shows L/F door closed (Figure 3).
- There may be an issue with a micro switch in the L/F door latch that prevents the J519 from reporting that the L/F door as open.
- The L/F door latch may be faulty or there is a wiring issue, repair as needed. Also, the GFF log may display a fault related to L/F door condition.

Address	ID	Measured value	Value
0009	5.1	Drivers door rotor switch	dr closed
0009	5.2	Rotary switch, passenger side	dr.open
0009	5.3	Left rear door rotor switch	dr.open
0009	5.4	Right rear door rotor switch	dr.open
0009	7.1	Driver door return message	unlocked

Address: 0009 System name: 09 - Veh electr sys ctrl mod BCM PQ25 Log versions: KWP2000/TP20 (Ereignisse: 1)	
+ Identification:	
- OTC memory entries:	
DTC memory entry	
Number:	VAG03301: Return message regarding driver door closing condition
Error type 1:	Implausible signal
Error type 2:	Intermittent
+ Standard ambient conditions:	

Figure 3



Additional Information

Revision History		
Revision Number	Released Date	Reason For Update
2048695/1	8/21/17	Original publication.

© 2017 Volkswagen Group of America, Inc. All rights reserved. Information contained in this document is based on the latest information available at the time of printing and is subject to the copyright and other intellectual property rights of Volkswagen Group of America, Inc., its affiliated companies and its licensors. All rights are reserved to make changes at any time without notice. No part of this document may be reproduced, stored in a retrieval system, or transmitted in any form or by any means, electronic, mechanical, photocopying, recording, or otherwise, nor may these materials be modified or reposted to other sites, without the prior expressed written permission of the publisher.