

# Emissions Recall

## Code: 23W1



|   |  |
|---|--|
| <b>Subject</b>  | <b>Inlet Air Box Housing Snow Flap Replacement &amp; Oxygen Sensor Inspection/Replacement</b>  |
| <b>Release Date</b>                                       | August 11, 2017  |
| <b>Important Repair Information!</b>                      | <b><i>CAMPAIGN 23W1 MUST BE COMPLETED BEFORE BEGINNING THE 23U7 CAMPAIGN!</i></b><br><b><i>Over the next few weeks there will be updates made to ODIS and the campaign circular. Do not retain any hard copies of campaign circulars – only refer to the electronic copies posted to Elsa and ServiceNet.</i></b>  |
| <b>Affected Vehicles</b>                                  | <b>U.S.A. : 2010-2013 MY Audi A3 2.0L TDI Engine Vehicles (Generation 1)</b><br><i>Check Campaigns/Actions screen in Elsa on the day of repair to verify that a VIN qualifies for repair under this action. Elsa is the <u>only</u> valid campaign inquiry &amp; verification source.</i> <ul style="list-style-type: none"><li>✓ Campaign status must show “open.”</li><li>✓ If Elsa shows other open action(s), inform your customer so that the work can also be completed at the same time the vehicle is in the workshop for this campaign.</li></ul>   |
| <b>Problem Description</b>                                | The snow flap in the inlet air box housing may remain partially to fully open. Should this occur, excess warm air could enter the air intake through the snow flap inlet.<br><br>The oxygen sensor will be checked during this service and, if measured degradation tolerances are met, the sensor will be replaced.   |
| <b>Corrective Action</b>                                  | Install an improved inlet air box housing snow flap and, if measured degradation tolerances are met, replace the oxygen sensor.  |
| <b>Parts Information</b>                                  | <b>03L906262B (O2 Sensor)</b> - Please contact the Parts Specialists via phone (800-767-6552, option#2), email ( <a href="mailto:VWoAPartsSpecialists@audi.com">VWoAPartsSpecialists@audi.com</a> ) or chat with the VIN to order.<br><b>3C0129594A (Snow Flap)</b> - Parts will be allocated prior to owner notification. If allocated parts have been used and your dealership is at the weekly Upper Order Limit, please submit the backordered sales document number to <a href="mailto:upperorderlimits@audi.com">upperorderlimits@audi.com</a> to have additional parts released.<br><b>G052172M2 (Special Anti-Friction Agent)</b> – Each can of Special Anti-Friction Agent is intended to service 100 Snow Flap installations. If allocated parts have been used and your dealership is at the weekly Upper Order Limit, please submit the backordered sales document number to <a href="mailto:upperorderlimits@audi.com">upperorderlimits@audi.com</a> to have additional parts released. |
| <b>Code Visibility</b>                                    | On or about August 11, 2017, affected vehicles will be listed on the Inventory Vehicle Open Campaign Action report under My Dealership Reports (found on <a href="http://www.accessaudi.com">www.accessaudi.com</a> & OMD Web). A list will not be posted for dealers who do not have any affected vehicles.<br><br>On or about August 11, 2017, this campaign code will show open on affected vehicles in Elsa.<br><br>On or about August 11, 2017, affected vehicles will be identified with this campaign code in the VIN Lookup tool at <a href="http://www.audiusa.com">www.audiusa.com</a> .   |
| <b>Owner Notification</b>                                 | Owner notification will take place in August 2017. Owner letter examples are included in this bulletin for your reference.   |
| <b>Emissions Campaigns Requirements (CALIFORNIA ONLY)</b> | The California Air Resources Board and the Department of Motor Vehicles (DMV) require emissions-related campaigns to be completed prior to vehicle registration renewal. When campaign work is done you must provide the owner with a signed “Vehicle Emission Recall – Proof of Correction” certificate (RC EMISCAVWAU). Order certificates online via the Compliance Label Ordering portal at <a href="http://www.accessaudi.com">www.accessaudi.com</a> .   |

**Additional Information**

**Please alert everyone in your dealership about this action, including Sales, Service, Parts and Accounting personnel. Contact Warranty if you have any questions.**

Dealers must ensure that every affected inventory vehicle has this campaign completed before delivery to consumers.

Fill out and affix Campaign Completion Label (CAMP 010 000) after work is complete.

*Labels can be ordered at no cost via the Compliance Label Ordering portal at [www.accessaudi.com](http://www.accessaudi.com).*



## Customer Letter Example (USA only)

<MONTH YEAR>

<CUSTOMER NAME>

<CUSTOMER ADDRESS>

<CUSTOMER CITY STATE ZIPCODE>

This notice applies to your vehicle: <VIN>

**Subject: Emissions Recall 23W1 – Inlet Air Box Housing Snow Flap  
2010-2013 MY Audi A3 2.0L TDI Engine Vehicles (Generation 1)**

Dear Audi Owner,

As part of Audi's ongoing commitment to our environment, and in cooperation with the United States Environmental Protection Agency and the California Air Resources Board, we are informing you of our decision to conduct an emissions recall on certain 2010-2013 MY Audi A3 2.0L TDI engine vehicles (Generation I). Our records show that you are the owner of a vehicle affected by this action.

**What is the issue?** The snow flap in the inlet air box housing may remain partially to fully open. Should this occur, excess warm air could enter the air intake through the snow flap inlet.

The oxygen sensor will be checked during this service and, if measured degradation tolerances are met, the sensor will be replaced.

**What will we do?** Your authorized Audi dealer will install an improved inlet air box housing snow flap and, if measured degradation tolerances are met, replace the oxygen sensor. This work will take about an hour to complete and will be performed for you free of charge. Please keep in mind that your dealer may need additional time for the preparation of the repair, as well as to accommodate their daily workshop schedule.

**What should you do?** In order to limit any possible inconvenience, please contact your authorized Audi dealer as soon as possible to schedule this service. For your convenience, you can also visit [www.audiusa.com](http://www.audiusa.com) and click on the "Find a Dealer" link to locate a dealer near you and schedule this service.

**Lease vehicles and address changes** If you are the lessor and registered owner of the vehicle identified in this action, please forward this letter immediately via first-class mail to the lessee within ten (10) days of receipt. If you have changed your address or sold the vehicle, please fill out the enclosed prepaid Owner Reply card and mail it to us so we can update our records.

**Important information for California Vehicle Owners – California Regulations** California regulations require that this campaign be completed prior to the time you renew your vehicle registration. Therefore, **please make sure that this campaign is completed prior to the renewal of your vehicle registration**, and that you furnish proof of completion to the Department of Motor Vehicles (DMV) in the form of a copy of the dealer's repair order, including a signed "Proof of Correction" certificate. You obtain this from your dealer after the campaign has been completed. Please retain the signed "Proof of Correction Certificate" with your vehicle records. **DO NOT MAIL THIS FORM to the DMV, unless requested.**

**Reimbursement of Expenses** If you have previously paid for repairs relating to the condition described in this letter, the enclosed form explains how to request reimbursement. We would be pleased to review your reimbursement request.

**Can we assist you further?** If your authorized Audi dealer fails or is unable to complete this work free of charge within a reasonable time, please contact Audi Customer Experience at 1-800-253-2834 or via our "Contact Us" page at [www.audiusa.com](http://www.audiusa.com).

**Checking your vehicle for open Recalls and Service Campaigns** To check your vehicle's eligibility for repair under this or any other recall/service campaign, please visit the **Recall/Service Campaign Lookup** tool at [www.audiusa.com](http://www.audiusa.com) and enter your Vehicle Identification Number (VIN).

We apologize for any inconvenience this matter may cause; however we are taking this action to help ensure your vehicle continues to meet and exceed your expectations. Thank you for your continued loyalty!

Sincerely,

Audi Customer Protection

**ATTENTION!**  
**Damages resulting from improper repair or failure to follow these work instructions are the dealer's responsibility and are not eligible for reimbursement under this action.**

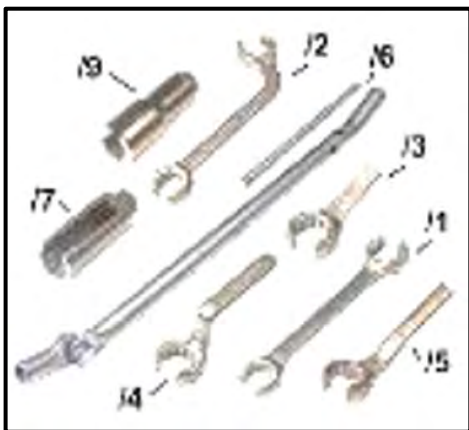
**Required Parts**

| Quantity         | Part Number   | Part Description            |
|------------------|---------------|-----------------------------|
| 1                | 3C0 129 594 A | Snow Flap                   |
| 0.01             | G 052 172 M2  | Special Anti-Friction Agent |
| 1 (if necessary) | 03L 906 262 B | Heated Oxygen Sensor (G39)  |

**Required Tools**



- VAS6150X – Diagnostic Tester (or equivalent)
- VAS5054X – Remote Diagnosis Head (or equivalent)



- 3337 – Ring Wrench 7-piece set (or equivalent)

The repair information in this document is intended for use only by skilled technicians who have the proper tools, equipment and training to correctly and safely maintain your vehicle. These procedures are not intended to be attempted by "do-it-yourselfers," and you should not assume this document applies to your vehicle, or that your vehicle has the condition described. To determine whether this information applies, contact an authorized Audi dealer. ©2017 Audi of America, Inc. All Rights Reserved.

| Applicable criteria ID(s) | Campaign/Action Status |
|---------------------------|------------------------|
| 01 ← 2                    | Open ← 1               |

EXAMPLE

**TIP**

If Campaign Completion label is present, no further work is required.

- Enter the VIN in Elsa and proceed to the “Campaign/Action” screen.

**TIP**

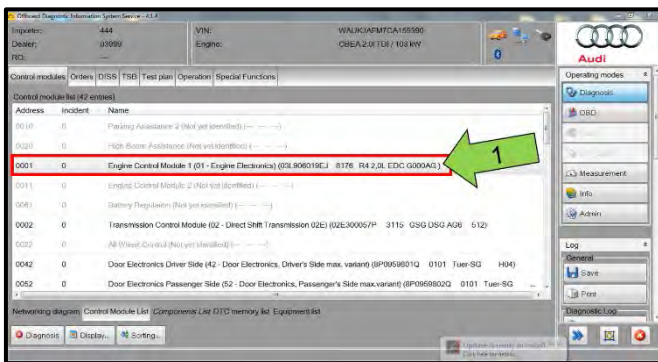
On the date of repair, print this screen and keep a copy with the repair order.

- Confirm the Campaign/Action is open <arrow 1>. If the status is closed, no further work is required.
- Note the Applicable Criteria ID <arrow 2> for use in determining the correct work to be done and corresponding parts associated.

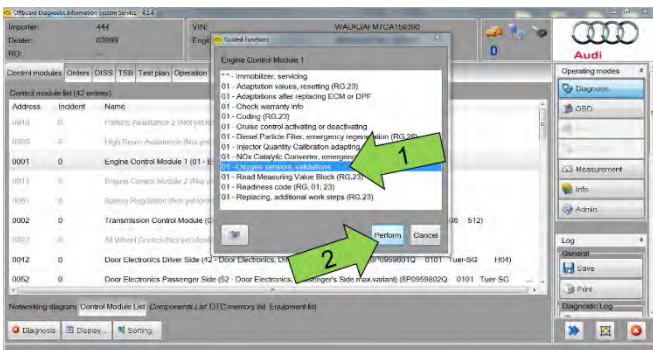
Proceed to Section B.

**Section B – Check condition, and if necessary, Replace Heated Oxygen Sensor (G39)**

**Check condition of Heated Oxygen (O2) Sensor (G39):**

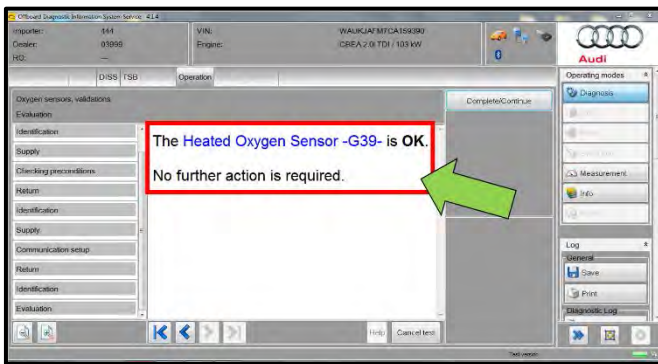


- Switch the ignition on.
- Connect the VAS6150X Diagnostic Tester (or equivalent) to the vehicle.
- Start the ODIS program.
- Upon ODIS startup, select “Diagnosis”.
- Under the “Control modules” tab, right click “0001 Engine Control Module” <arrow 1>.

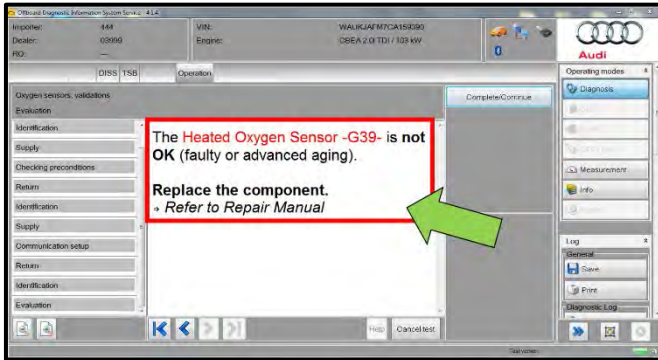


- Select “Oxygen sensors, validations” <arrow 1> and select “Perform” <arrow 2>.

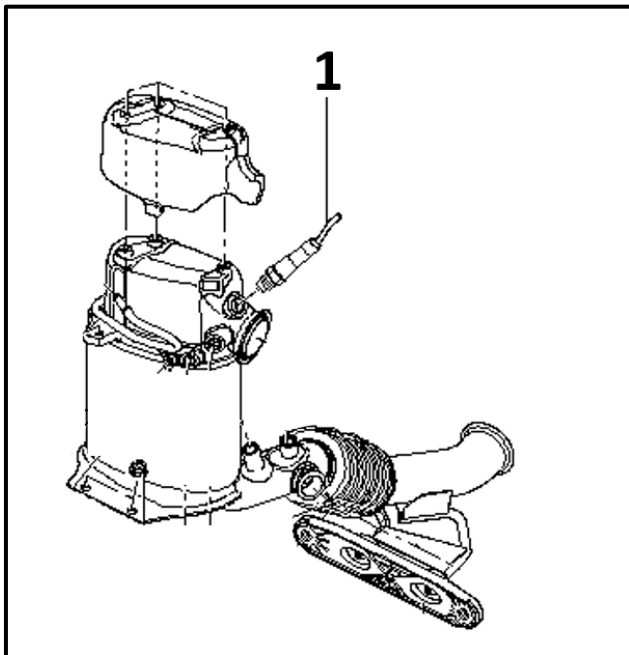
The repair information in this document is intended for use only by skilled technicians who have the proper tools, equipment and training to correctly and safely maintain your vehicle. These procedures are not intended to be attempted by “do-it-yourselfers,” and you should not assume this document applies to your vehicle, or that your vehicle has the condition described. To determine whether this information applies, contact an authorized Audi dealer. ©2017 Audi of America, Inc. All Rights Reserved.



- The test plan will run automatically without intervention.
  - If you receive the message indicated to the left <arrow> that the Heated Oxygen Sensor –G39- is **GOOD**:
    - **Proceed to Section C** and replace the Snow Flap.
  - If another message is received, proceed to the next step.



- If you receive the message indicated to the left <arrow> that the Heated Oxygen Sensor -G39- is **BAD** and requires replacement, **proceed to the next step** and replace the Heated Oxygen Sensor -G39-.

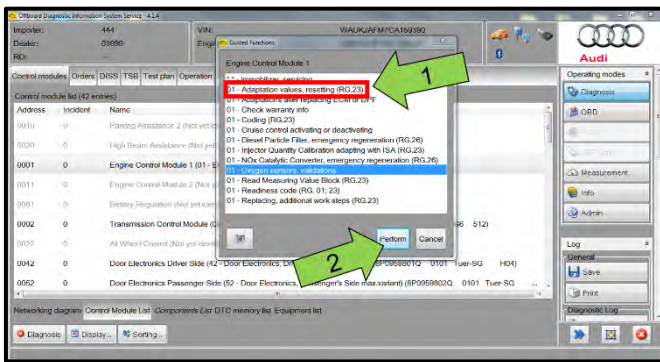


- If sensor replacement is required per the test plan results, loosen and remove the original Heated Oxygen Sensor -G39- <1> from Diesel Particulate Filter using the Ring Wrench 7-piece set -3337-.
- Install new Heated Oxygen Sensor -G39- <1> (part number **03L906262B**) into Diesel Particulate Filter using the Ring Wrench 7-piece set -3337- and torque to 52 Nm.

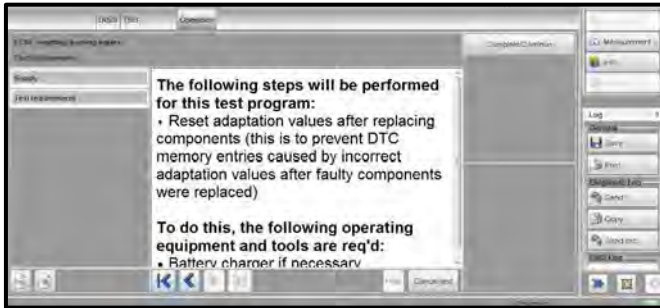
**NOTE**

**\*Risk of Damaging Sensor\***

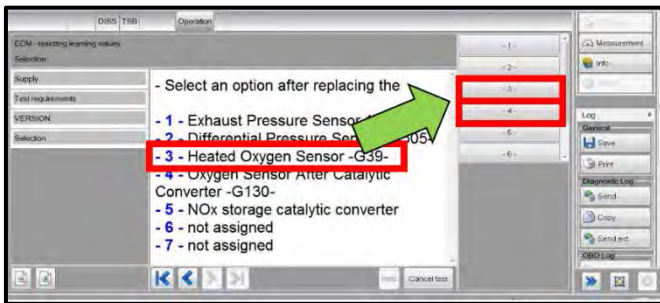
Grease only the threads with Hot Bolt Paste (G 052112A3). The Hot Bolt Paste must not get into the slots on the sensor body.



- After replacing the Heated Oxygen Sensor -G39-, you must reset the O2 Sensor adaptation values.
  - Right click on “0001 – Engine Control Module”.
  - Select “Guided Functions”.
  - Select “Adaptation values, resetting (RG.23) <arrow 1>.”
  - Select “Perform” <arrow 2>.



- Prior to deletion of the values for the Heated Oxygen Sensor -G39-, the test plan will populate this screen. Select “Complete/Continue.”



- Select items -3- and -4- <arrow> from the Test Plan list to reset the Heated Oxygen Sensor -G39- and -G130- adaptation values.
  - You will need to run this test once for each sensor value.
- Select “Complete/Continue” when both the -G39- and -G130- have been reset, and send the GFF Log online.

**Proceed to Section C**



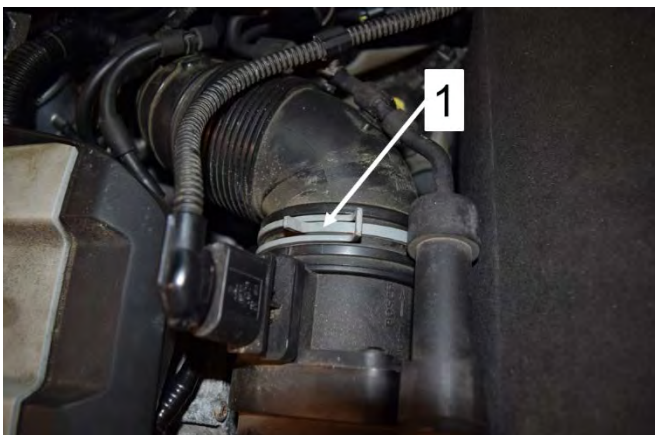
## Section C – Replace Snow Flap



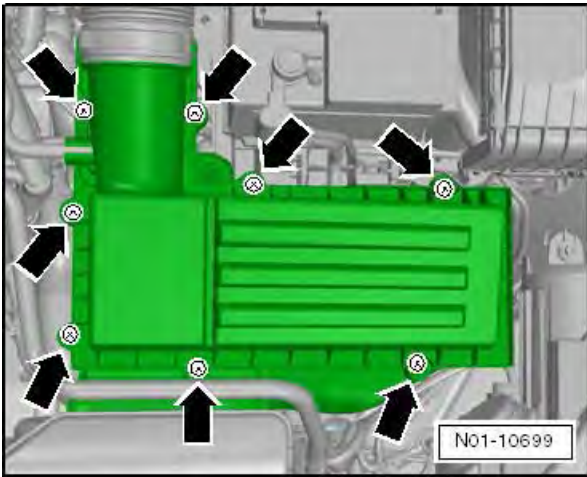
- Remove low pressure hose <1> from air filter housing.



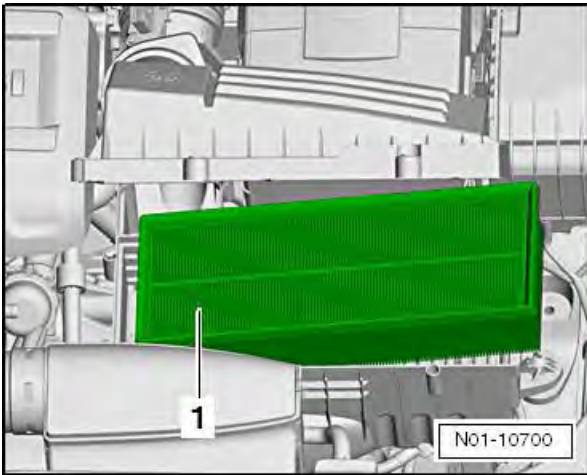
- Disconnect Mass Air Flow (MAF) connector <1> - G70-.



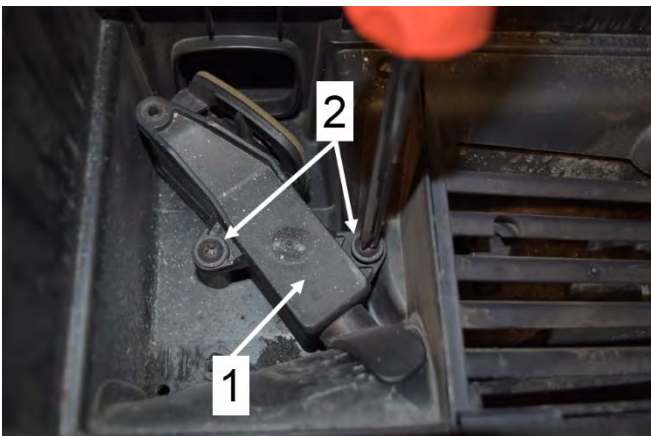
- Loosen clamp <3> to remove air duct hose.



- Loosen the eight airbox cover screws <arrows> and remove the airbox cover.



- Remove the air filter <1> from the lower airbox.

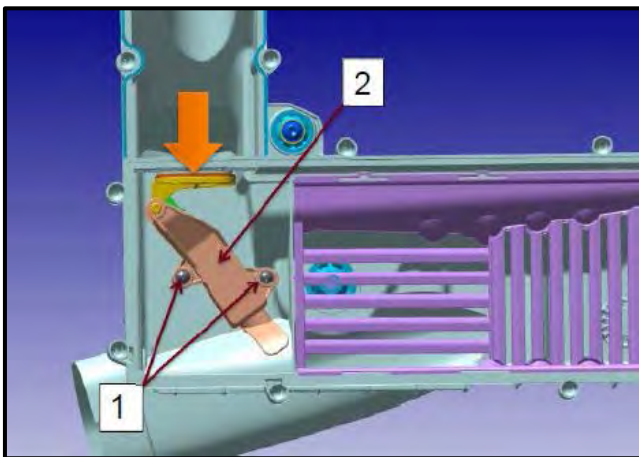


- Loosen the two screws <2> on the Snow Flap and remove them.
- Lift the Snow Flap <1> for throttle body heater out of the airbox base and remove it.

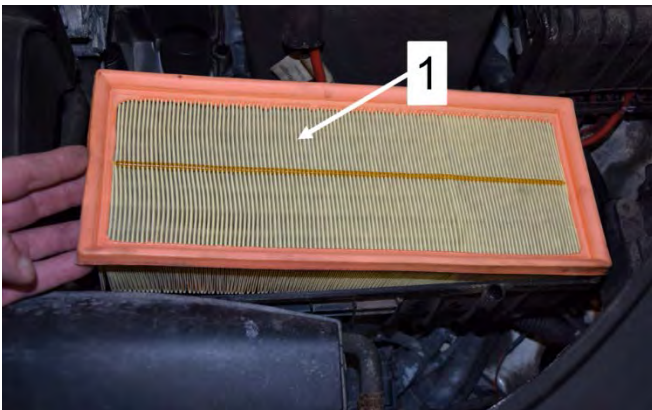


**i TIP**

The new Snow Flap when at rest and at normal room temperature (70 F or 21 C) may appear to be extended in the closed position further than the old flap. This condition is normal.



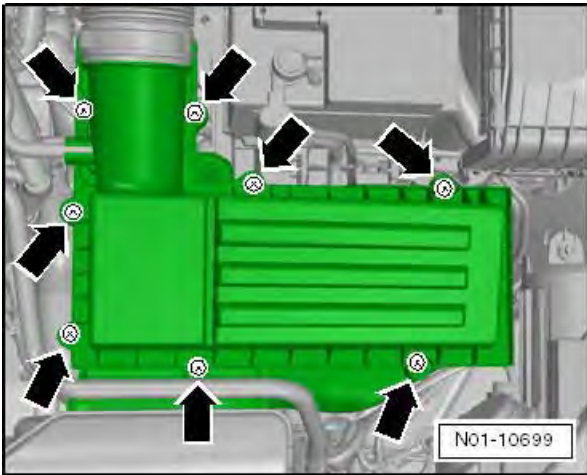
- Install the new Snow Flap by pushing the flap in the direction of the arrow towards the push closed position for easier installation.
- Install and tighten the two screws <1> to 1.6 Nm.



- Reinstall the air filter <1> into the lower airbox.



- Reinstall air duct hose in the direction of the <arrow> and reinstall the clamp.



- Reinstall the air filter cover and tighten the bolts <arrows> to 2 Nm.



- Reconnect Mass Air Flow (MAF) connector <2> - G70-.



- Reinstall low pressure hose <1> from air filter housing.

**Proceed to Section C**

### Section C – Campaign Completion Stamp

I certify that this campaign  
has been performed in strict  
accordance with the applicable  
Audi repair procedure.

SAGA Code: \_\_\_\_\_

Technician: \_\_\_\_\_

Date: \_\_\_\_\_

Item#: AUD4927ENG

-OR-

Je certifie que cette  
campagne de rappel a été  
exécutée suivant les strictes  
directives de réparation  
d'Audi

Code de SAGA: \_\_\_\_\_

Technicien: \_\_\_\_\_

Date: \_\_\_\_\_

Item # AUD4927FRE

- Once the campaign has been completed, the technician should stamp the repair order.
- Stamps are available for ordering through the Compliance Label Ordering Portal.
- **Proceed to Section D**

### Section D – Campaign Completion Label

#### Install Campaign Completion Label

- Fill out and affix Campaign Completion Label, part number CAMP 010 000, next to the vehicle emission control information label.



**TIP**

Ensure Campaign Completion Label does not cover any existing label(s).

**ALL WORK COMPLETE**

**Proceed to Section E**

## Section E - Parts Return/Disposal

Properly store (retain), destroy or dispose of removed parts in accordance with all state/province and local requirements, unless otherwise indicated and/or requested through the Warranty Parts Portal (WPP).

**Proceed to Section E (California only).**

## Section F – California Only Requirements

### **CALIFORNIA ONLY Requirements for Emissions Campaigns Having Customer Notification**

The California Air Resources Board and the Department of Motor Vehicles (DMV) require emissions-related campaigns to be completed prior to vehicle registration renewal. **When campaign work is done you must provide the owner with a signed “Vehicle Emission Recall – Proof of Correction” certificate (RC EMIS\_CAL VW).** Certificates can be ordered at no cost online via the Compliance Label Ordering portal at [www.vwhub.com](http://www.vwhub.com).



#### **TIP**

Ensure owners are aware of the importance of retaining the completed certificate for their records. It should be mailed to the California DMV only upon request.