

UPDATE Technical Bulletin



Das Auto.

May 05, 2015

2309 UPDATE – 2.0L TDI ECM Software (FED_EMS)

NOTE:

- Perform this UPDATE on all applicable vehicles within the Federal Emissions Warranty.
- It is MANDATORY to perform UPDATES on all applicable vehicles in dealer inventory PRIOR TO RETAIL SALE.
- Inform customers that this UPDATE will be available free of charge as long as their vehicle is within the Warranty parameters outlined in this UPDATE.
- ECM settings will be reverted to basic parameters during the flash process, please keep I/M inspection requirements in mind prior to updating any software.

NOTE:

Required DMS Wording/Programming Text (SAGA claim comments):

UPDATE Code 2309 – 2.0L TDI ECM Software Update

Model(s)	Year	Engine Code	Trans. Code
Passat	2015	2.0L TDI (CVCA)	DSG (02E), Manual (02Q)
Jetta	2015	2.0L TDI (CVCA)	DSG (02E), Manual (02Q)
Beetle/Beetle Convertible	2015	2.0L TDI (CVCA)	DSG (02E), Manual (02Q)
Golf/Golf SportWagen	2015	2.0L TDI (CRUA)	DSG (02E), Manual (02Q)

REVISION HISTORY

Revision	Date	Purpose
1	May 05, 2015	Original publication

Condition

This update has been proactively released to prevent a MIL on condition. Updated ECM software is available to bring the vehicle up to the most current factory specifications.



NOTE

Only perform this SVM procedure if the MIL light is OFF. If the MIL is illuminated, all DTC's must be resolved prior to performing this UPDATE.

This UPDATE is in effect until removed.

Vehicle must meet all of the following criteria:

- Procedure is valid only for vehicles that show the 23O9 code in Elsa, Campaign/Action Information screen *on the day of repair*.
- If the vehicle is sold it must be within the Federal Emissions Warranty.
- Procedure must be performed within the allotted time frame stated in this UPDATE.
- Procedure must be performed on applicable vehicles in dealer inventory prior to sale.

Technical Background

Deviation between the calculated and actual soot mass of the particulate matter trap causing DTC P2463 to set in the ECM fault memory.

Incorrect data for the particulate matter trap regeneration time causing DTC P2458 to set in the ECM fault memory.

Production Solution

Improved software implemented in production.

Service

NOTE:

- *Elsa is the only valid inquiry/verification source. Check Elsa on the day this vehicle UPDATE will be performed to verify vehicle eligibility for the UPDATE. Status must show "open". Attach an Elsa printout showing the "open" status to the repair order.*
- *If this UPDATE appears to have already been performed but the code still shows open in Elsa, contact Warranty before proceeding further. Another dealer may have recently performed this UPDATE but not yet entered a claim for it in the system.*
- *Elsa may also show additional open action(s); if so, inform your customer - this work can be done while the vehicle is in for this UPDATE.*
- *Contact the Warranty Helpline (U.S.) or the Warranty Campaign Specialist (Canada) if you have any questions.*



Applicable Criteria ID (s)	Campaign/Action Status
01	Open

EXAMPLE

- Enter the VIN in Elsa and proceed to the “Campaign/Action” screen

TIP

On the date of repair, print this screen and keep a copy with the repair order

- Ensure that the Status is “Open”
<arrow 2>
- Note the Applicable Criteria ID
<arrow 1> for use in determining the correct work to be done and corresponding parts associated



Update Programming Procedure

TIP

To Update-Programming using SVM, **review and follow** instructions in **Technical Bulletin Instance 2014603** "Software Version Management".

The SVM Process must be completed in its entirety so the database receives the update confirmation response. A warranty claim may not be reimbursed if there is no confirmation response to support the claim.

NOTE

Prior to launching VAS Diagnostic Device application and starting control module update process, confirm tester screen saver and power settings are off.

Failure to do so may result in the tester entering power save mode during data transfer, and subsequent control module failure.

When using any tester in conjunction with a VAS 5054A wireless transmitter head for a flash procedure:

- Connect the tester using an Ethernet "hard line" cable between the tester and the on-line network. **DO NOT USE WI-FI.**
- Connect a USB cable between the transmitter head and the tester. Failure to do so may lead to errors during the flash procedure.
- **DISABLE BLUETOOTH and ensure that the tester is NOT communicating via Bluetooth as the Bluetooth protocol is not a robust data transfer environment for the flash process. DO NOT USE BLUETOOTH for flashing. Control module failures caused by flashing via Bluetooth will not be covered.**

All Volkswagen scan tool devices must only be used with their power adapters plugged in. Under no circumstances should they be used on battery power alone during the programming procedure.

Critical Warning: The Midtronics Battery Charger **must** be connected to the vehicle battery for the duration of the programming, to ensure the battery state of charge remains above 12.5 volts during the update process. If the battery drops below 12.5 volts, the programming could fail which may result in damage to the control module.

WARNING

Radiator Fan(s) may cycle ON high speed during the Update Process! There is a serious risk that personal injury may result if contact is made with spinning fan blades. Keep hands and all objects away from Radiator Fan(s) during Update Process!

SVM Update Instructions



- Connect the tester to the on-line network using an Ethernet cable.
- Connect the VAS 5054A transmitter head to the VAS tester using the USB cable.
- Disable Bluetooth by physically turning the switch to the off position.

NOTE

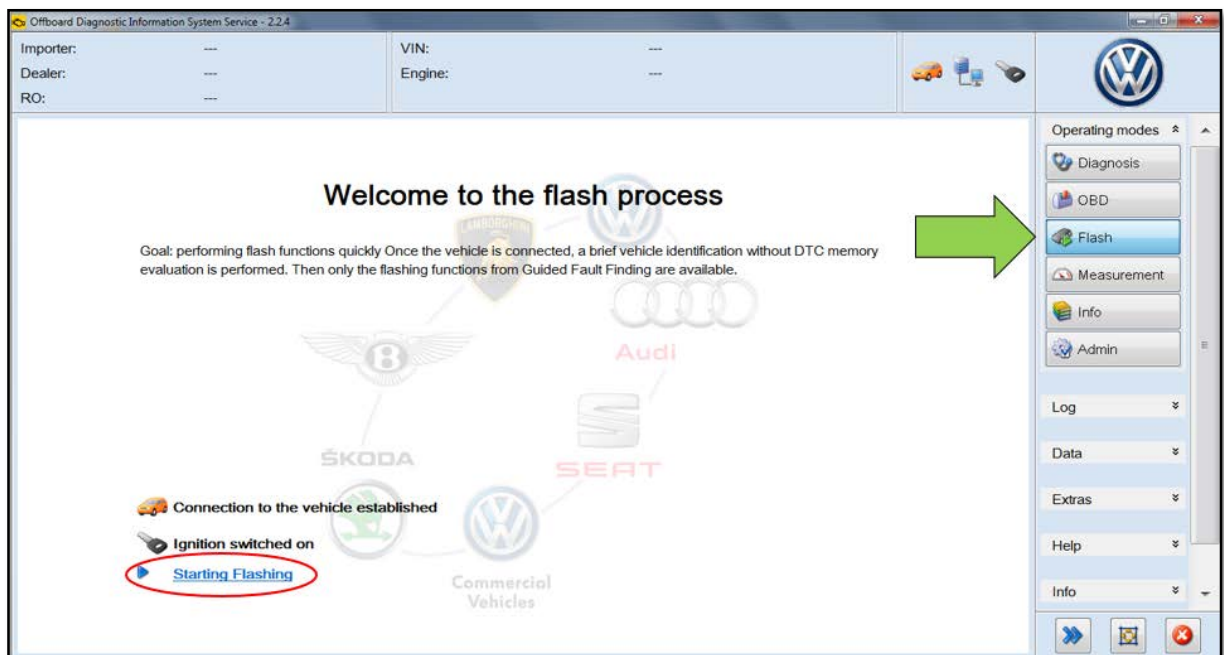
If the Bluetooth wireless VAS 5054A transmitter head is used in conjunction with a VAS tester, the transmitter head **MUST BE** connected with a USB cable to the tester.

WARNING

The Bluetooth function of the scan tool **MUST BE PHYSICALLY SWITCHED OFF** prior to performing this update. <See pictures>



- Open the hood.
- Attach a battery charger to the vehicle battery.
- Connect the VAS tester to the vehicle via a wired connection to the VAS 5054A.
- Connect the VAS tester to the internet via wired LAN cable connection.
- Verify the Bluetooth switch on the VAS tester is switched OFF (See the Note above).
- Switch the ignition ON.
- Start ODIS.

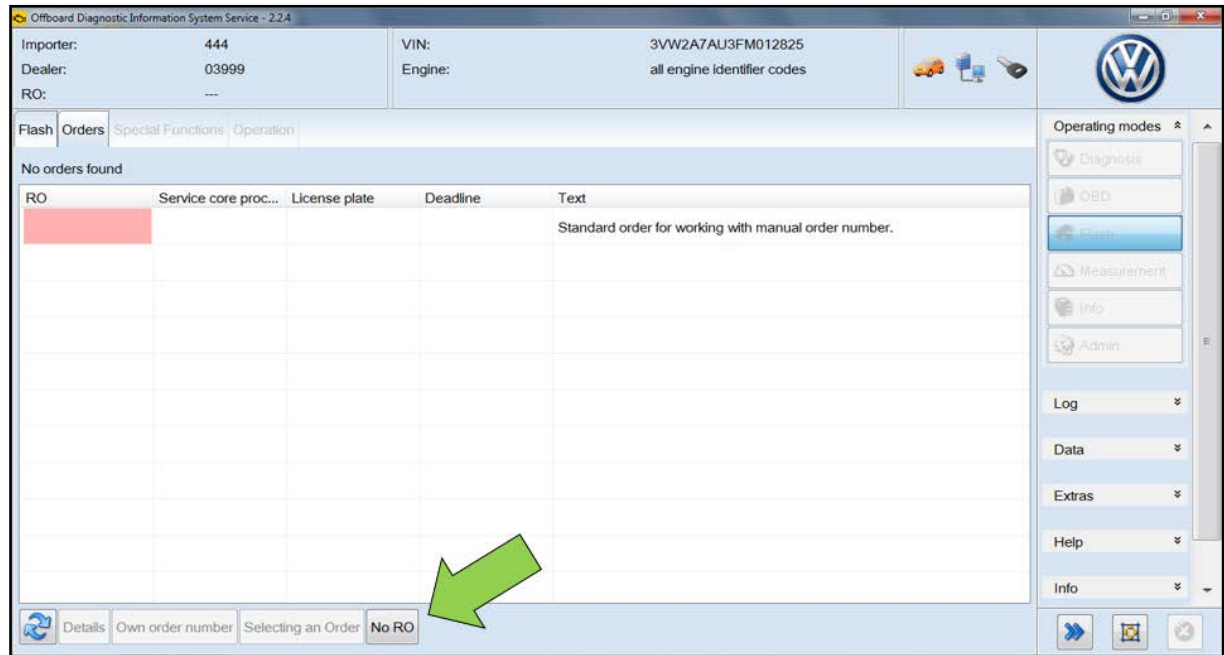


- Select the "Flash" operating mode <arrow>.
- Select "Starting Flashing" <circle>.
- Follow the on-screen directions.

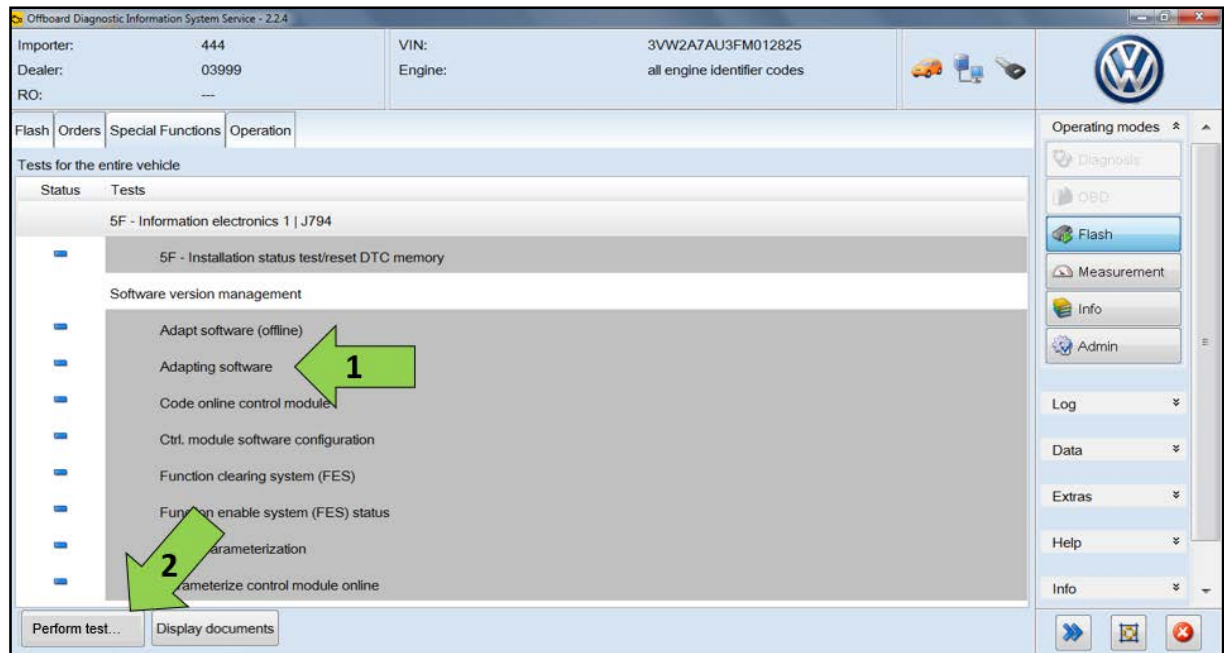
UPDATE Technical Bulletin



Das Auto.



- Select "No RO" <arrow>.

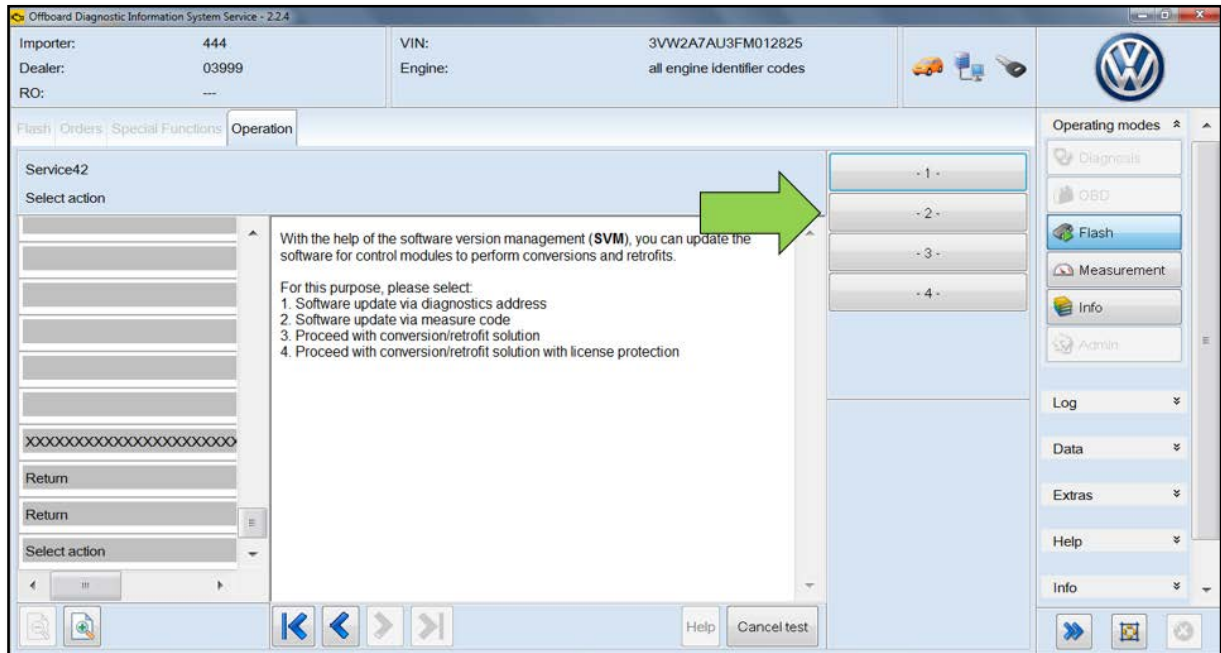


- Select "Adapting Software" <arrow 1>.
- Select "Perform Test" <arrow 2>.

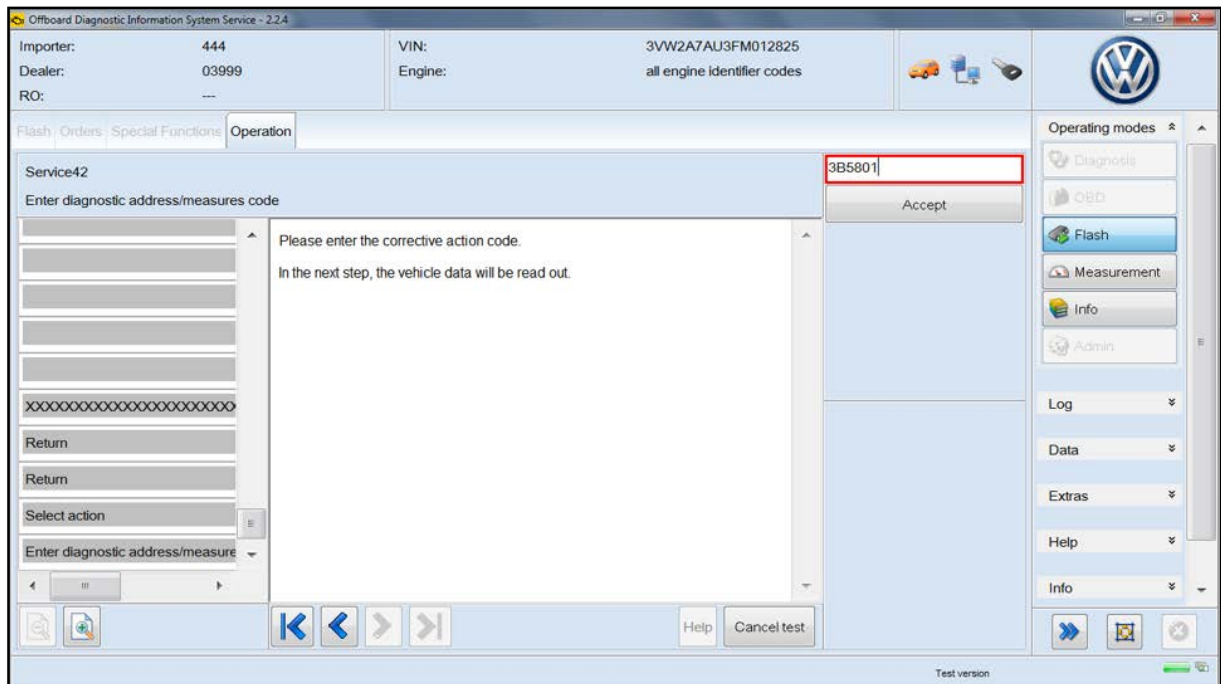
UPDATE Technical Bulletin



Das Auto.



- Select “Software update via measure code” <arrow>.

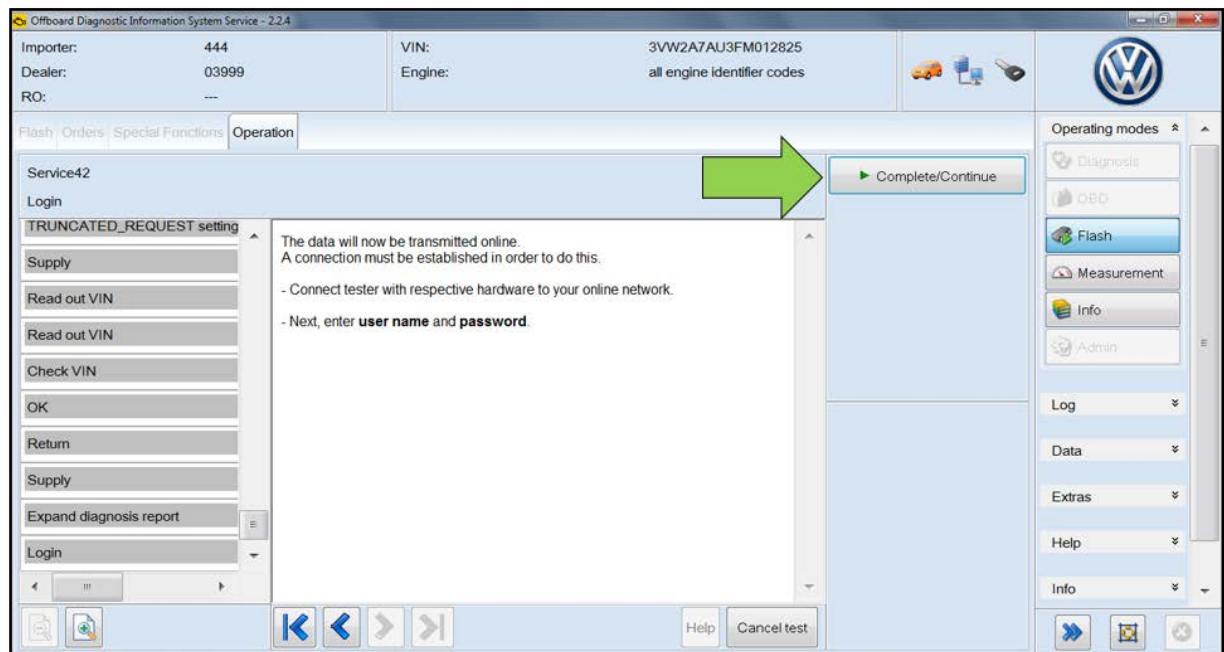


- When prompted, enter SVM code “3B5801” <as shown>.

UPDATE Technical Bulletin



Das Auto.



- Select “Complete/Continue” <arrow>.
- When prompted, enter your Geko ID and password.
- Follow the on-screen directions and complete the ECM software update.
- Reference the chart below for applicable Part Number and Software Level information.

UPDATE Technical Bulletin



Das Auto.

Model	Engine	Transmission	Old Software Part No.	Old Software Version	New Software Part No.	New Software Version (or higher)	SVM Action Code
Passat	2.0L TDI (CVCA)	Manual (02Q)	04L906016AE	All	04L906016AE	8416	3B5801
Passat	2.0L TDI (CVCA)	DSG (02E)	04L906016AF	All	04L906016AF	8417	3B5801
Jetta	2.0L TDI (CVCA)	Manual (02Q)	04L906016AJ	All	04L906016AJ	8418	3B5801
Jetta	2.0L TDI (CVCA)	DSG (02E)	04L906016AK	All	04L906016AK	8419	3B5801
Beetle/Beetle Convertible	2.0L TDI (CVCA)	Manual (02Q)	04L906016AG	All	04L906016AG	8414	3B5801
Beetle/Beetle Convertible	2.0L TDI (CVCA)	DSG (02E)	04L906016AH	All	04L906016AH	8415	3B5801
Golf/Golf SportWagen	2.0L TDI (CRUA)	Manual (02Q)	04L906021C	All	04L906021C	8412	3B5801
Golf/Golf SportWagen	2.0L TDI (CRUA)	DSG (02E)	04L906021D	All	04L906021D	8413	3B5801

- When the SVM process is complete, submit the GFF log online and clear all DTC's.
- Remove the battery charger.
- Close the battery cover (if applicable).
- Close the hood.

Work is Complete

UPDATE Technical Bulletin



Das Auto.

Warranty

Claim Entry Procedure	Enter your claim immediately upon completion of the UPDATE. Claims will only be paid for vehicles that show this UPDATE code open in Elsa on the day of repair. To help ensure prompt and proper payment, attach the screen print to the repair order.
Claim Help	<u>U.S. dealers</u> - Contact the Warranty Helpline toll-free at 1-866-306-8447 for help with claim entry. <u>Canadian dealers</u> - Contact your Warranty Campaign Specialist. For contact information, please proceed to "ServiceNet – Warranty/Contact Information/Campaigns – "Warranty Campaign Specialist."
Required Customer Notification	Ensure customers are aware of all work performed on the vehicle by recording the information on the repair order. Attach a copy of the <i>Vehicle UPDATE Fact Sheet</i> to the customer's copy of the repair order and take the time to explain this UPDATE to your customer.

UPDATE Technical Bulletin



Das Auto.

Claim Entry Instructions

After UPDATE has been completed, enter claim as soon as possible to help prevent work from being duplicated elsewhere. Attach the Elsa screen print showing action open on the day of repair to the repair order.

If customer refused campaign work:

- ✓ U.S. dealers: Submit request via WISE under the *Campaigns/Update/Recall Closure* option.
- ✓ Canada dealers: Fax repair order to Warranty at (905) 428-4811.

Service Number	2309 (The letter O not number zero)
Damage Code	0099
Parts Vendor Code	WWO
Claim Type	Sold vehicle: 7 10 Unsold vehicle: 7 90
Vehicle Wash/Loaner	Do not claim wash/loaner under this action
Criteria I.D.	01 or 02
	Check/Updated software present, no further work required Labor operation: 0183 00 99 10 T.U. -OR- Update ECM software. Labor operation: 2360 25 99 30 T.U.



Required Parts and Tools

Tool Description	Tool No:
Always ensure the ODIS Service application and brand diagnostic data versions are up-to-date prior to performing SVM.	VAS Diagnostic Device
Midtronics Battery Tester/Charger	InCharge 940 (INC-940) or GRX3000VAS

Additional Information

All part and service references provided in this Technical Bulletin are subject to change and/or removal. Always check Elsa for the most current version of this document.

UPDATE Technical Bulletin



Das Auto.

Summary of Vehicle Service – UPDATE Code 2309

Dear Volkswagen Customer,

Volkswagen is committed to building reliable, quality products that are a pleasure to drive and own. As part of this commitment, today your dealer performed UPDATE code 2309 on your vehicle. This UPDATE is designed to update the ECM software, and was performed for you free of charge.

If you should ever have any questions about this UPDATE, or if you ever have any vehicle concerns, your authorized Volkswagen dealer will be pleased to assist you.

Thank you for driving a Volkswagen!