

# Technical Service Bulletin



## 40 Steering wheel oscillation

40 15 46 2024687/4 July 13, 2015. Supersedes Technical Service Bulletin Group 40 number 12-25 dated August 7, 2012 for reasons listed below.

Model(s)	Year	VIN Range	Vehicle-Specific Equipment
A5	2008 - 2009	All	Not Applicable
A5	2010	000001 - 008447	Not Applicable
Q5	2009	All	Not Applicable
Q5	2010	000001 - 015954	Not Applicable
A5 Cabriolet	2010	000001 - 008910	Not Applicable
A4	2009	All	Not Applicable
A4	2010	A000001 - A037158 N000001 - N011465	Not Applicable

## Condition

REVISION HISTORY		
Revision	Date	Purpose
4	-	Revised <i>Service</i> (Updated part numbers) Revised <i>Required Parts and Tools</i> (Updated part numbers) Revised <i>Warranty</i> (Updated labor times)
3	8/7/2012	Revised header data
2	12/9/2011	Revised <i>Service</i> (Clarified repair information and updated VIN data)

- Steering wheel oscillation at highway speeds (typically between 70 and 85 mph).
- No vibration in the seat surface or other vehicle components.
- Audi original equipment tires are installed on the vehicle.
- If necessary, TSB 2022179 has been completed and the 1st harmonic of radial force of every tire and wheel assembly is below 18 lbs at a tire pressure of 36 PSI (2.5 bar).

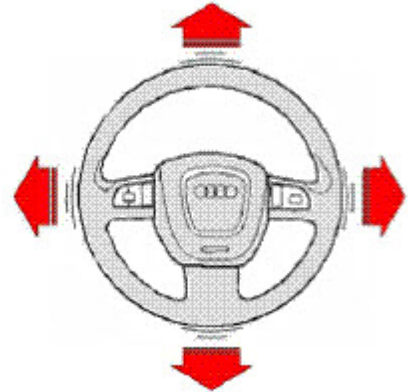
## Technical Background

Ride disturbances such as uneven roads, wheel imbalance, impermissibly high radial forces of the tires, or other rotating components on the front of the vehicle are transmitted to the steering wheel as a vibration or oscillation.

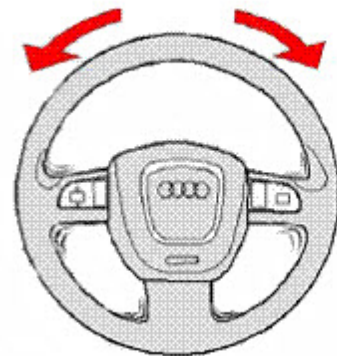


**Tip:** Steering wheel vibration is movement that can be seen and felt (Figure 1). If vibrations are felt in any part of the vehicle, this bulletin does not apply.

Steering wheel oscillation is a visible side-to-side movement of the steering wheel (Figure 2), without vibration (in the steering wheel or any other part of the vehicle).



*Figure 1. Steering wheel vibration.*



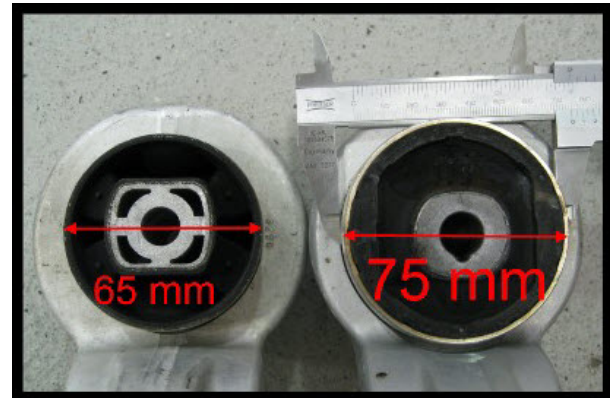
*Figure 2. Steering wheel oscillation.*

## Production Solution

Updated front wishbone links are equipped with larger (75 mm) fluid-filled bushings that help dampen steering wheel oscillation.

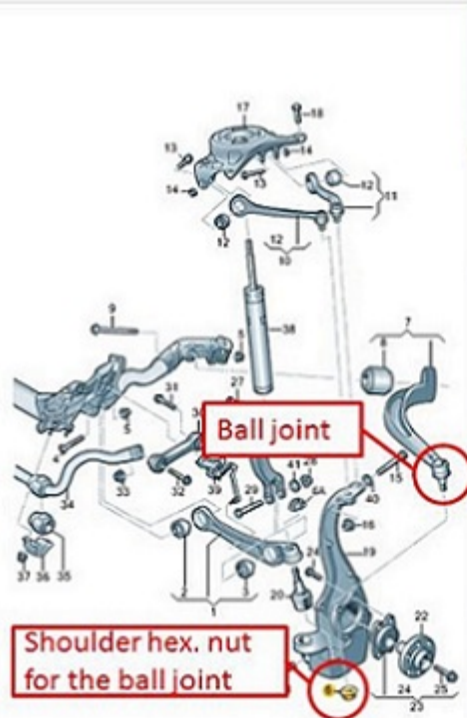
## Service

1. Check the bushing size of the front wishbone links (Figure 3). The original wishbone links have a 65 mm bushing and the updated wishbone links have a larger fluid-filled 75 mm bushing.



**Figure 3** Original wishbone link (left) and updated wishbone link (right).

2. Wishbone links are available with two different size ball joints that are *not* interchangeable. If the vehicle is equipped with the original wishbone links that have the smaller 65 mm bushing, use the VIN to search ETKA to determine the size of the shouldered hex nut (Figure 4, point 6). Use the shouldered hex nut size to determine the correct wishbone links from the Required Parts table.



6	WHT 004 898	shouldered hex. nut, self locking	M14X1,5
		to be used for:	8K0 407 693 T 8K0 407 694 T 8K0 407 693 S 8K0 407 694 S
6A	WHT 004 995	hexagon flange nut, self-locking	M12X1,5
		to be used for:	8K0 407 151.C 8K0 407 152.C
		D >> - 15.08.2011	
(6A)	WHT 004 898	shouldered hex. nut, self-locking	M14X1,5
		to be used for:	8K0 407 151 F 8K0 407 152 F
		D - 15.08.2011>>	
(7)	8K0 407 693 S	wishbone link hydro-mounting	M14 75MM left front
		D >> - 17.05.2010	
		also use:	WHT 004 898
(7)	8K0 407 693 S	wishbone link hydro-mounting	M14 75MM left front
		D - 17.05.2010>> - 30.08.2010	
		also use:	WHT 004 898
(7)	8K0 407 693 S	wishbone link hydro-mounting	M14 75MM left front
		D - 30.08.2010>> - 20.06.2011	
		also use:	WHT 004 898

**Figure 4.** Example of two size shouldered hex nuts (6) for the guide link ball joint.

# Technical Service Bulletin



- Install updated wishbone link conversion kit per the *Required Parts and Tools* chart below. If the kit part number is not available, wishbone links can be ordered by their individual part numbers.



**Tip:** Check Elsa to determine which bolts are one-time use.

## Warranty

<b>Claim Type:</b>	Use applicable claim type. If vehicle is outside any warranty, this Technical Service Bulletin is informational only.		
<b>Service Number:</b>	4016		
<b>Damage Code:</b>	0010		
<b>Labor Operations:</b>	Remove and install 2 wishbone links (front left and front right)	4016 2050	110 TU (A4, Q5) 90 TU (A5 Cab)
	Remove and install 2 wheels	4405 2000	20 TU
<b>Diagnostic Time:</b>	GFF	No allowance	0 TU
	Road test prior to service procedure	0121 0002	10 TU
	Road test after service procedure	0121 0004	10 TU
	Technical diagnosis at dealer's discretion (Refer to Section 2.2.1.2 and Audi Warranty Online for DADP allowance details)		
<b>Claim Comment:</b>	As per TSB #2024687/4		

All warranty claims submitted for payment must be in accordance with the *Audi Warranty Policies and Procedures Manual*. Claims are subject to review or audit by Audi Warranty.

## Required Parts and Tools



**Tip:** Guide links must be replaced in pairs for this TSB. If the kit part number is not available, guide links can be ordered by their individual part numbers.

Part Number	Part Description	Quantity
8K0498998 (Kit) includes: <ul style="list-style-type: none"><li>• 8K0407693R</li><li>• 8K0407694R</li></ul>	Guide link conversion kit – M12 <ul style="list-style-type: none"><li>• Left wishbone link – M12</li><li>• Right wishbone link – M12</li></ul>	1 kit (if applicable)
8K0498998A (Kit) includes: <ul style="list-style-type: none"><li>• 8K0407693S</li><li>• 8K0407694S</li></ul>	Guide link conversion kit – M14 <ul style="list-style-type: none"><li>• Left wishbone link – M14</li><li>• Right wishbone link – M14</li></ul>	1 kit (if applicable)

## Additional Information

All parts and service references provided in this TSB (2024687) are subject to change and/or removal. Always check with your Parts Department and service manuals for the latest information.