

Classification:

Reference:

 COPYRIGHT© NISSAN NORTH AMERICA, INC.
 Date:

GI18-002

ITB18-003

January 23, 2018

REDUCED VEHICLE LOAD CAPACITY LABEL (REGULATORY REQUIREMENT)

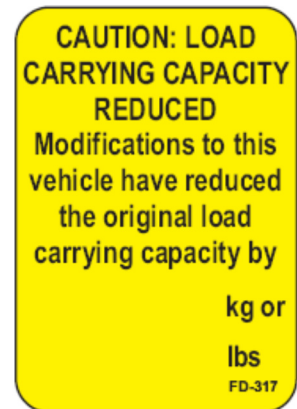
APPLIED VEHICLES: All Infiniti equipped with dealer installed or VPC installed accessories

SERVICE INFORMATION

The National Highway Traffic Safety Administration (NHTSA) requires that any automobile dealer that installs accessories on a vehicle prior to first retail sale must install a special label (“**reduced capacity label**”) on that vehicle if the total weight of all accessories on that vehicle exceeds 1.5 percent of the vehicle’s gross vehicle weight rating (GVWR) or 100 pounds, whichever is less. This includes accessories that the dealer installs (dealer installed factory accessories and dealer installed aftermarket accessories), and accessories installed at the Vehicle Processing Center (VPC) prior to the vehicle being delivered to the dealer.

IMPORTANT: Failure to comply with this requirement may result in penalties imposed by NHTSA.

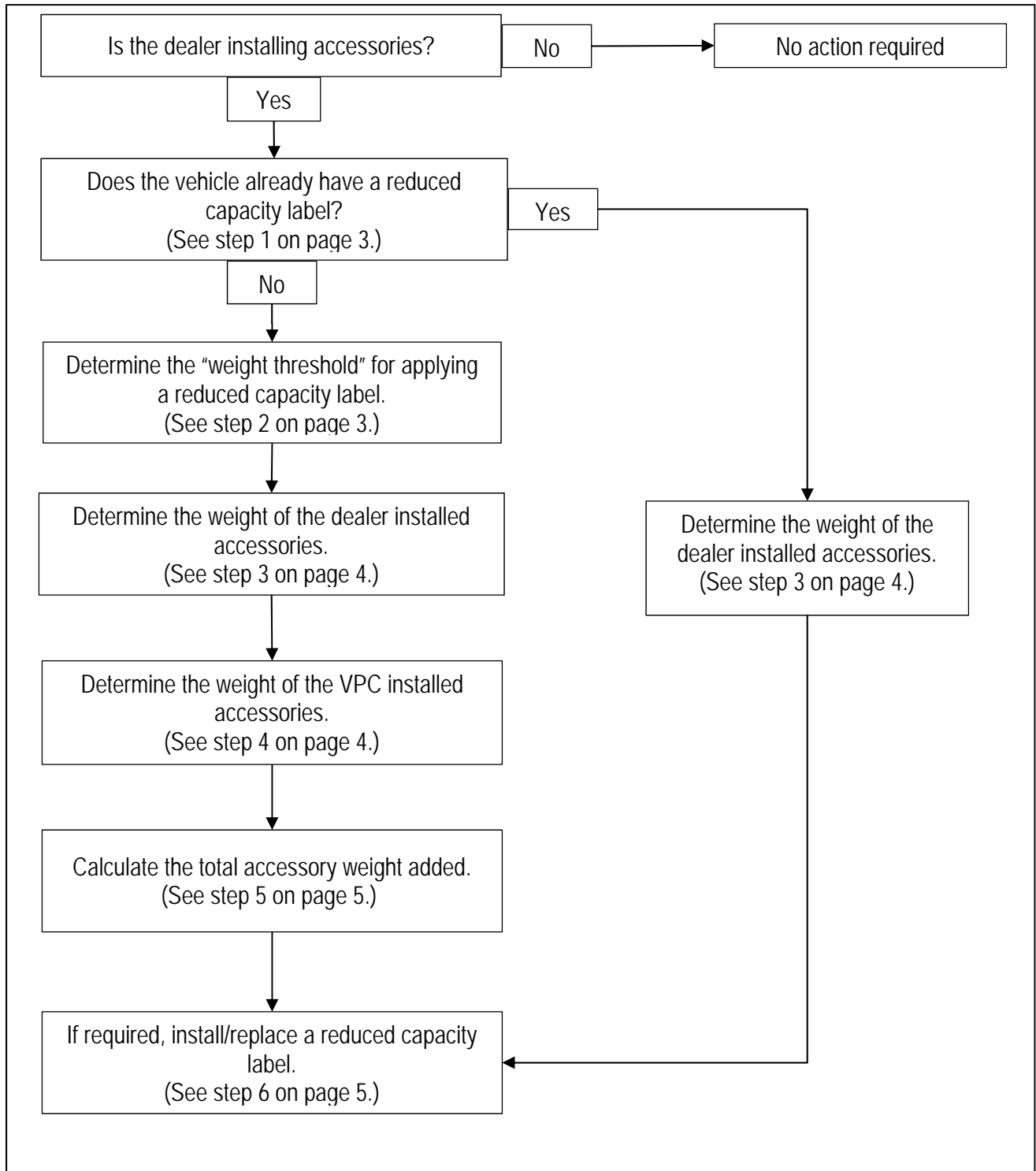
EXAMPLE of a
reduced capacity label



Follow the instructions in this bulletin to help meet these requirements.

Infiniti Bulletins are intended for use by qualified technicians, not 'do-it-yourselfers'. Qualified technicians are properly trained individuals who have the equipment, tools, safety instruction, and know-how to do a job properly and safely. NOTE: If you believe that a described condition may apply to a particular vehicle, DO NOT assume that it does. See your Infiniti retailer to determine if this applies to your vehicle.

REDUCED CAPACITY LABEL INSTALLATION (overview)



REDUCED CAPACITY LABEL INSTALLATION (detail)

1. Check if the vehicle already has a reduced capacity label:

- If present, the label will be located near the existing Tire and Loading Information label on the driver side B pillar (driver doorjamb).

Vehicle already has a label – skip to step 3.

Vehicle does not have a label – go to step 2.

2. Determine the “weight threshold” for applying a reduced capacity label.

A label is required with the lesser weight of the following:

- If the combined weight of all VPC and dealer installed accessories is 100 pounds or more, a label is required.
- If the combined weight of all VPC and dealer installed accessories is more than 1.5% of GVWR, a label is required.

EXAMPLE:

GVWR.....3823 lbs.

Multiply....x 0.015

= 57.3 lbs.

- In the above example, if the combined weight of all VPC and dealer installed accessories is more than 57 pounds, a label is required.

NOTE: Remember, when determining whether a reduced capacity label is required, the **dealer installed accessories must be calculated together with any VPC accessories** that may have already been installed. Even if a dealer intends to install a light weight accessory, make sure to check the Monroney Label to determine if any additional accessories were previously installed at the VPC.

3. Determine the weight of the dealer installed accessories.

- A listing of Infiniti-approved accessories and their corresponding weights can be found at: NNA.net.com > MY DOCUMENTS > Accessories > Current Model Application Charts.
- If the accessory you are installing is not listed in the Accessory Application Charts; use a simple scale to weigh the accessory.
- Subtract the weight of any parts removed from the weight of the parts installed to determine total added weight.
 - Use a simple scale to weigh any parts removed from the vehicle (for example, if you are removing one set of wheels and replacing with another set).

If the vehicle already has a reduced capacity label – skip to step 6.

NOTE: Remember, when determining whether a reduced capacity label is required, the **dealer installed accessories must be calculated together with any VPC accessories** that may have already been installed. Even if a dealer intends to install a light weight accessory, make sure to check the Monroney Label to determine if any additional accessories were previously installed at the VPC.

4. Determine the weight of any VPC installed accessories.

- The vehicle Monroney Label will list VPC installed accessories.
- A listing of Infiniti-approved accessories and VPC installed accessories with their corresponding weights can be found at: NNA.net.com > MY DOCUMENTS > Accessories > Current Model Application Charts.

NOTE: Remember, when determining whether a reduced capacity label is required, the **dealer installed accessories must be calculated together with any VPC accessories** that may have already been installed. Even if a dealer intends to install a light weight accessory, make sure to check the Monroney Label to determine if any additional accessories were previously installed at the VPC.

5. Calculate the total accessory weight added.

- VPC installed accessories (if applicable), plus dealer installed accessories, minus removed items, equals total accessory weight added.

EXAMPLE:

Weight of VPC installed accessories.....30 lbs.

Weight of dealer installed accessories.....+ 50 lbs.

Weight of parts removed.....- 10 lbs.

Total weight added.....= 70 lbs.

- If the total accessory weight added is **less than** the “weight threshold” determined in step 2, then no further action is needed.
- If the total accessory weight added is **more than** the “weight threshold” determined in step 2, a reduced capacity label is required.

6. Apply the reduced capacity label onto the vehicle:

If the vehicle already has a reduced capacity label:

- a. Add the weight listed on the current label to the weight of the accessories you are installing (see step 3).
- b. Install a new label on top of the existing label.
IMPORTANT: The label must be attached within approximately 1 inch of the existing Tire and Loading Information label on the driver side B pillar (driver doorjamb).
- c. Use a black permanent pen/marker to list the new total weight.

Vehicle does not have existing reduced capacity label:

- a. Attach a reduced capacity label within one inch of the existing Tire and Loading Information label on the driver side B pillar (driver doorjamb).
IMPORTANT: The label **must** be attached within approximately 1 inch of the existing Tire and Loading Information label on the driver side B pillar (driver doorjamb).
- b. Use a black permanent pen/marker to list the weight calculated in step 5.

OBTAINING REDUCED CAPACITY LABELS

Reduced capacity labels are commercially available from several suppliers. Among them is:

National Truck Equipment Association (NTEA).

Web: www.ntea.com

Phone: 800-441-6832

Part Number: 2246

Example of a reduced capacity label (actual labels may vary):

