



SERVICE BULLETIN

Classification: EL14-056a	Reference: NTB14-120a	Date: February 27, 2018
------------------------------	--------------------------	----------------------------

2013-2018 FRONTIER AND 2013-2015 XTERRA; TRIP ODOMETER CANNOT BE RESET

This bulletin has been amended to update the Applied Vehicles. No other changes have been made. Please discard previous versions of this bulletin.

APPLIED VEHICLES: 2013-2018 Frontier (D40)
2013-2015 Xterra (N50)

IF YOU CONFIRM:

The reset/change button does not function:

- Trip odometer readings cannot be reset/cleared
- If equipped: Cannot change from one trip odometer reading to the other
- If displayed: Cannot reset the LOOSE FUEL CAP warning message
- If equipped: Cannot change modes in the trip computer

AND

The reset/change button (pin) is stuck in the up or down position.

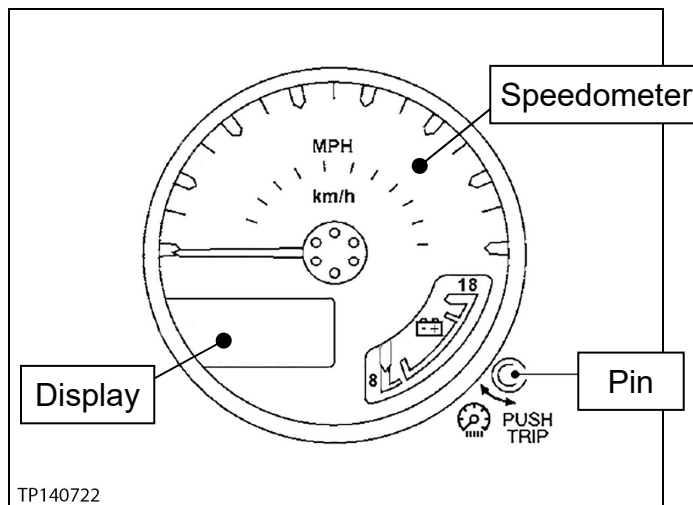


Figure 1

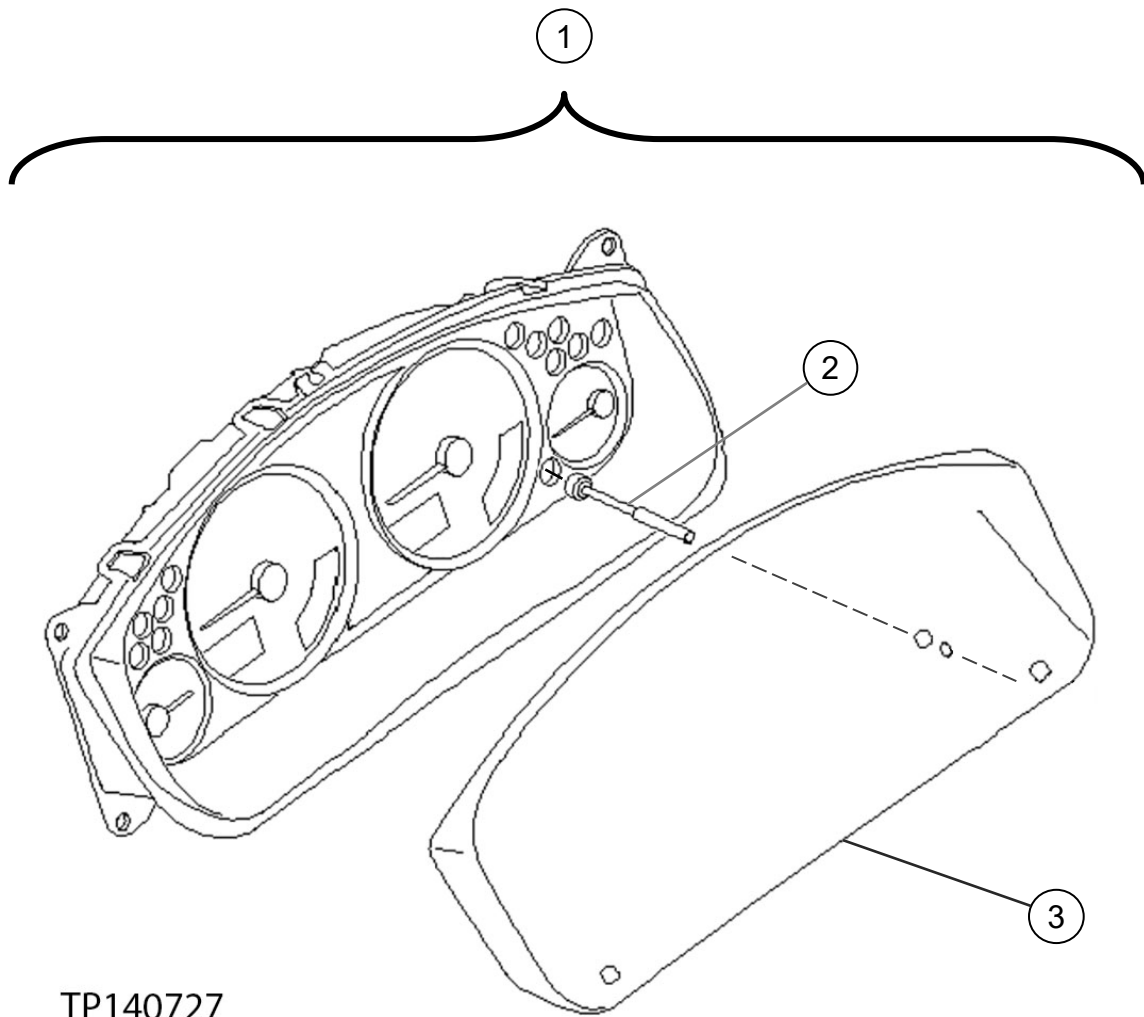
ACTION:

Realign the combination meter.

If rub marks are seen on the pin, replace it.

- Refer to this bulletin's **SERVICE PROCEDURE** for combination meter realignment, and reset/change button replacement (if needed).

Nissan Bulletins are intended for use by qualified technicians, not 'do-it-yourselfers'. Qualified technicians are properly trained individuals who have the equipment, tools, safety instruction, and know-how to do a job properly and safely. **NOTE:** If you believe that a described condition may apply to a particular vehicle, DO NOT assume that it does. See your Nissan dealer to determine if this applies to your vehicle.



TP140727

Figure 2

1) Combination meter

2) Pin

3) Front cover

SERVICE PROCEDURE

Realign Combination Meter

1. Inspect the reset/change button (pin).
 - a. If the pin shows rub marks, go to **Reset/Change Button Replacement** on the next page.
 - b. If the pin shows no rub marks, go to step 2.
2. Remove cluster lid A.
 - Refer to the Electronic Service Manual (ESM), section **BODY INTERIOR > INTERIOR**, for removal procedure.
3. Loosen all four (4) combination meter screws.
4. Slide the combination meter upward as far as the alignment dowels will allow, and then hold.
5. While holding the combination meter upward, secure all 4 screws.
 - Secure the lower screws, and then the upper screws.
6. Verify the pin works normally.
7. Install cluster lid A.
 - Refer to the ESM, section **BODY INTERIOR > INTERIOR**, for installation procedure.

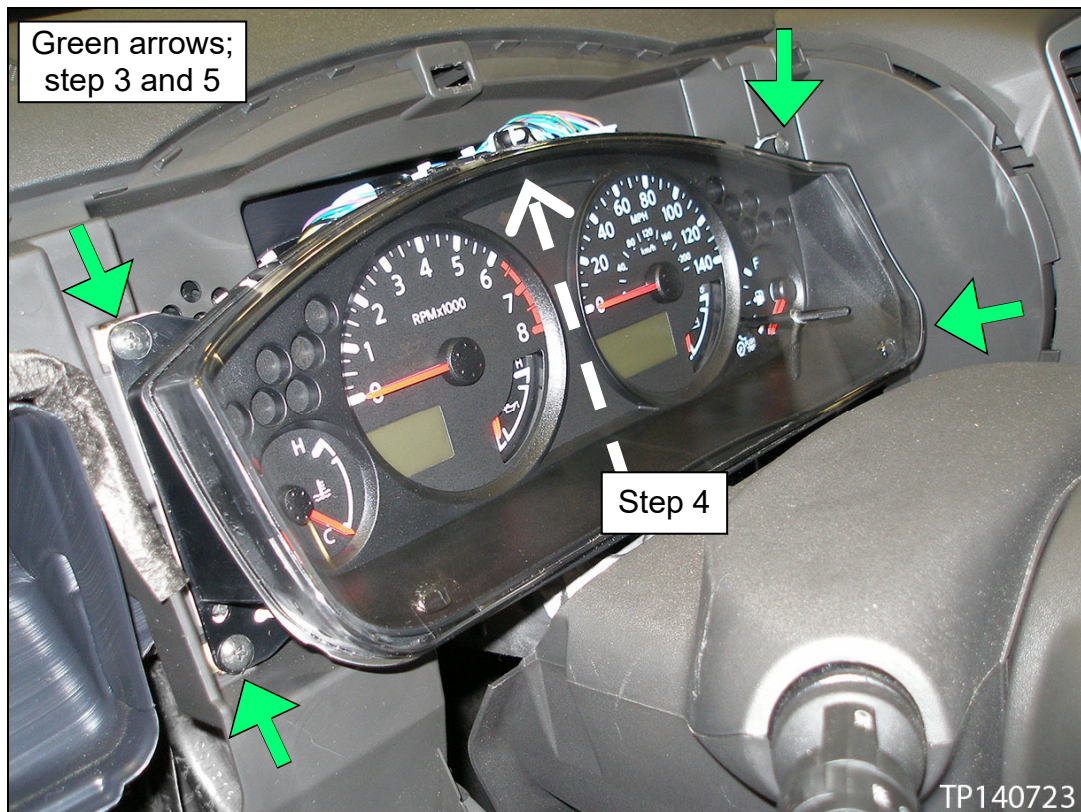


Figure 3

Reset/Change Button Replacement

1. Remove cluster lid A.
 - Refer to the ESM, section **BODY INTERIOR > INTERIOR**, for removal procedure.
2. Remove the 4 screws, and then remove the combination meter.
3. Unsnap the clips holding the front cover, and then remove the front cover.

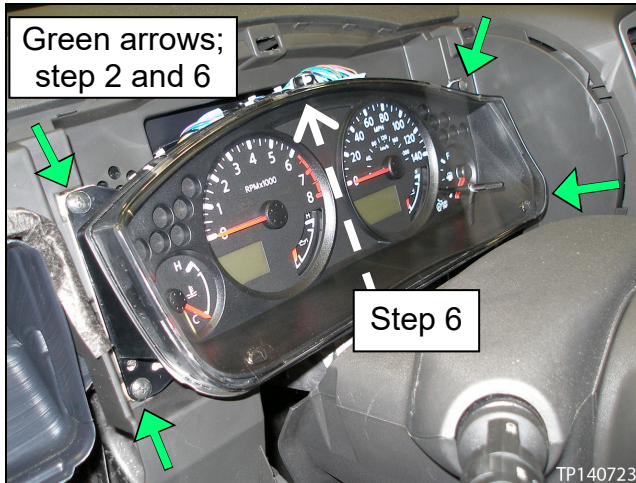


Figure 4

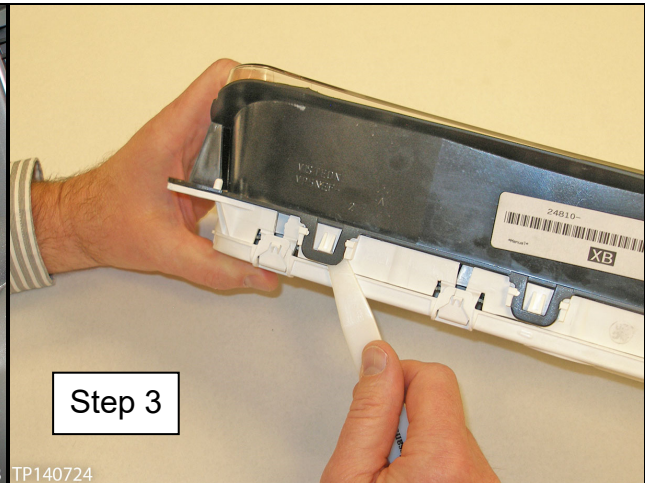


Figure 5

4. Pull out the pin, and then put in the new one.
 - The replacement pin is listed in **PARTS INFORMATION**.
5. Carefully snap the front cover in place.
 - Make sure the pin goes through both holes easily.

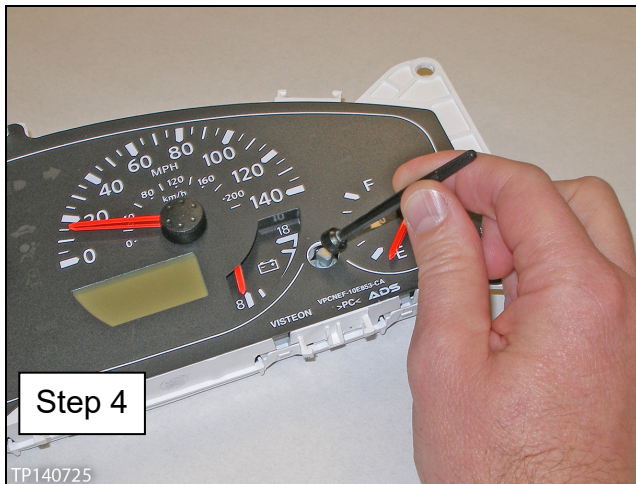


Figure 6

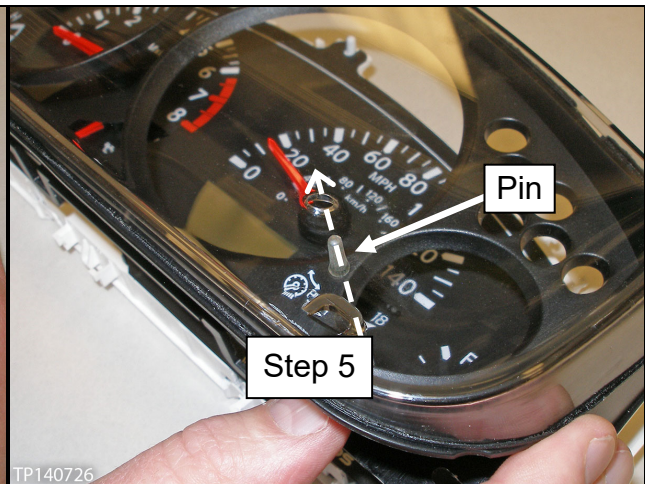


Figure 7

6. Install the combination meter:
 - a. Connect all electrical connections to the combination meter, and then put the combination meter in place.
 - b. Loosely install the 4 screws.
 - c. Slide the combination meter upward as far as the alignment dowels will allow, and then hold.
 - d. While holding the combination meter upward, secure all 4 screws.
 - Secure the lower screws, and then the upper screws.

7. Verify the pin works normally.

8. Install cluster lid A.

- Refer to the ESM, section **BODY INTERIOR > INTERIOR**, for installation procedure.

PARTS INFORMATION

DESCRIPTION	MODEL	PART NUMBER	QUANTITY
KNOB-RESET	2013-2018 Frontier	24829-9CA0A	1, if needed
	2013-2015 Xterra		

CLAIMS INFORMATION

Submit a Primary Part (PP) type line claim using the following claims coding:

DESCRIPTION	PFP	OP CODE	SYM	DIA	FRT
Realign or replace meter pin	24820-9BF1C	RB10AA	ZE	32	(1)

(1) Reference the current Nissan Warranty Flat Rate Manual and use the indicated flat rate time.