



# Service Bulletin

## PRELIMINARY INFORMATION

**Subject:** Rear Door Exterior Paint Finish Chipped, Cracked or Scratched Along Rear Corner of Rear Side Door Reveal Molding

**Models:** 2011-2013 Chevrolet Avalanche, Silverado, Suburban, Tahoe  
2011-2013 GMC Sierra, Yukon Models  
(Excluding Regular Cab Pickup)

### Condition/Concern

Some customers may comment that the exterior paint finish is chipped, cracked or scratched around the rear corners of the rear side door window outer sealing strip (reveal molding).

The single point chips may occur when the molding is installed during manufacturing. The molding has mold marks on the edge that may chip the finish during installation.

More extensive damage may be the result of inadequate clearance between the molding and the door.

As the molding expands when exposed to elevated temperatures, and as the molding moves slightly while running the window up/down, it may contact the finish and scratch or chip the paint.

### Recommendation/Instructions (Crew Cab and Long Wheel Base Utility)

**Note:** Some of the materials required for this procedure may need to be ordered. It is suggested that material be obtained prior to scheduling repair with the customer.

**Important:** Do Not install a new window reveal molding for this concern.

To improve the gap between the window reveal molding and the door sheet metal, and to help diminish the possibility of damage from the molding, protective material will be applied to both the molding and the door outer panel.

Use the following steps to correct the condition.



1. Apply fine line masking tape along the rear edge of the reveal molding as shown. Keep the tape tight along the edge without going under the molding. This will be used as a guide when installing the protective material.



- Align the beginning of the tape with the foam seal on the sealing strip.

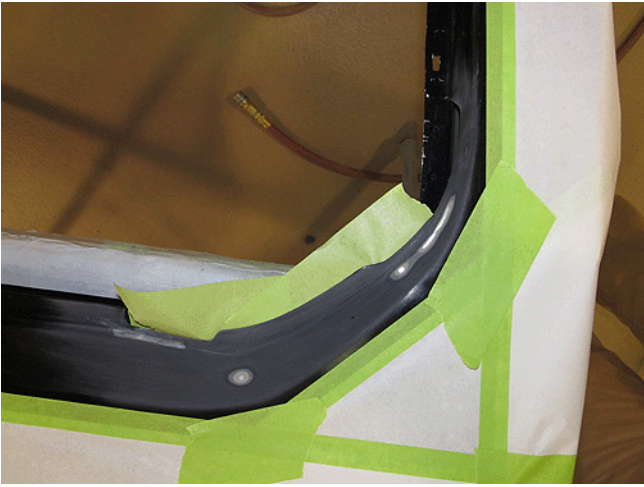


- End the tape 160 mm (6.25 in) down from the tip of the molding.

2. Remove the window reveal molding as follows:



- 2.1. Insert two fiber trim sticks as shown, behind the edge of the window weatherstrip / run channel, to provide a gap between the run channel and the paint to aid in removal of the reveal molding.
- 2.2. Holding front and upper rear corners, carefully release the rear tab from behind the run channel and release the rear alignment tabs of the reveal molding from the slots in the door outer sheet metal, while carefully beginning to raise the rear corner of the molding.
- 2.3. Carefully remove the molding, gradually working it up from rear toward front.
- 2.4. Remove the trim sticks.



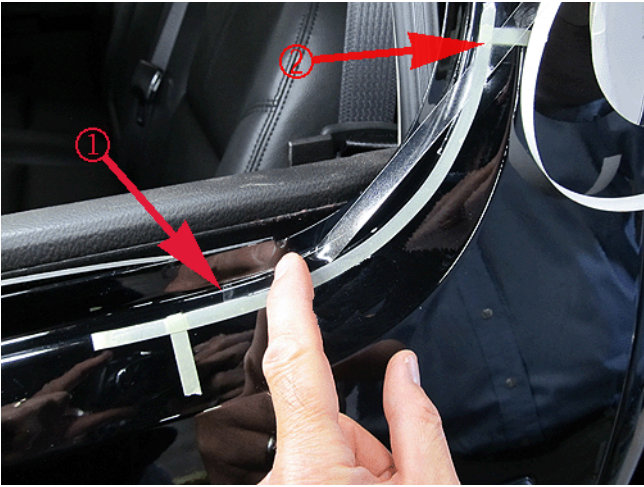
3. Repair the damaged paint finish. Refer to Paint and Coatings in SI. Keep the paint repair area as small as possible. Mask the affected area as shown to minimize the area that needs to be repainted.



4. Locate the tab at the top rear tip of the reveal molding.
5. Clean the surface of the molding tab using a general purpose adhesive cleaner to ensure the surface is free of contaminants that may affect adhesion.



6. Install six layers of \*3-M® Scotchguard™ Paint Protection Film, Door Edge Guard # 84901, on the tab as shown. Trim the edges of the protection film to match the contour of the molding tab. This will shim the tip of the molding away from the paint.



7. Install the paint protection film to the door inner panel as shown. Begin the tape application 25 mm (1.0 in) behind the tape line (1). Use the fine line tape as a guide when installing the material. End the protective film at the tape strip (2).



8. Using a small file, smooth off the mold marks on the underside of the reveal molding before reinstalling the molding.  
 9. Reinstall the reveal molding as follows:



- 9.1. Insert two fiber trim sticks as shown behind the edge of the window weatherstrip run channel to provide a gap between the run channel and the paint to aid in installation of the reveal molding.  
 9.2. Carefully insert the rear lower corner of the molding down between the glass and outer sheet metal.  
 9.3. Holding the front and upper rear corners, align the molding and carefully begin to install the molding, starting at the rearward edge.  
 9.4. Carefully work the molding into position from rear to front.  
 9.5. Carefully position the upper tab of the molding behind the run channel and begin to insert the alignment tabs into the slots in the outer sheet metal.

- 9.6. Remove the trim sticks.
- 9.7. Carefully work the run channel into position upward in the rear corner.
- 9.8. Run the window up and down two times to fully seat the run channel.

## Recommendation/Instructions (Extended Cab and Short Wheel Base Utility)

**Note:** Some of the materials required for this procedure may need to be ordered. It is suggested that material be obtained prior to scheduling repair with the customer.

**Important:** Do Not install a new window reveal molding for this concern.

To improve the gap between the window reveal molding and the door sheet metal, and to help diminish the possibility of damage from the molding, protective material will be applied to the molding.

Use the following steps to correct the condition.

1. Remove the reveal molding.
  - 1.1. **Extended Cab:** Remove the window reveal molding as follows:

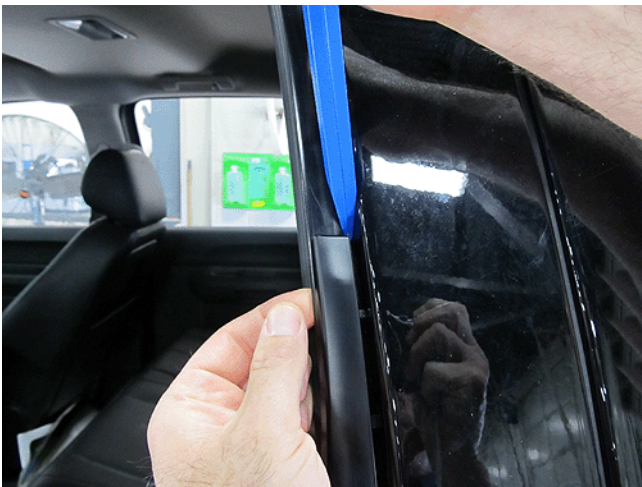


1.1.1. Insert two fiber trim sticks as shown, behind the edge of the window weatherstrip / run channel, to provide a gap between the run channel and the paint to aid in removal of the reveal molding.

1.1.2. Holding the front and upper rear corners, carefully begin to raise the molding beginning at the forward edge of the molding; while working rearward, carefully beginning to release the rear tab from behind the run channel and release the rear alignment tab of the reveal molding from the slot in the door outer sheet metal.

1.1.3. Carefully remove the molding, gradually working it up from front toward rear.

- 1.2. **Short Wheel Base Utility:** Remove the window reveal molding as follows:

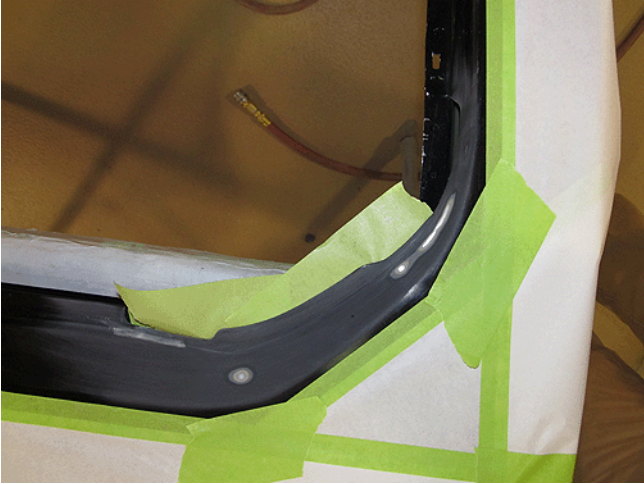


1.2.1. Insert two fiber trim sticks as shown, behind the edge of the window weatherstrip / run channel, to provide a gap between the run channel and the paint to aid in removal of the reveal molding.

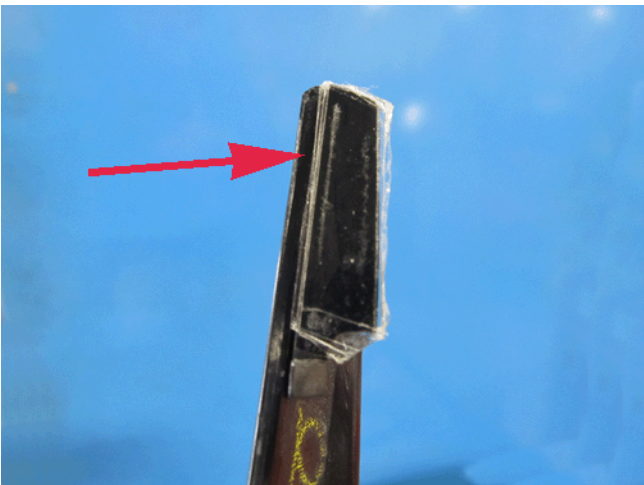
1.2.2. Holding the front and upper rear corners, carefully release the rear tab from behind the run channel and release the rear alignment tabs of the reveal molding from the slot in the door outer sheet metal, while carefully beginning to raise the rear corner of molding.

1.2.3. Carefully remove the molding, gradually working it up from rear toward front.

1.1. Remove the trim sticks.



2. Repair the damaged paint finish. Refer to Paint and Coatings in SI. Keep the paint repair area as small as possible. Mask the affected area as shown to minimize the area that needs to be repainted.
3. Locate the tab at the top rear tip of the molding.
4. Clean the surface of the molding tab using a general purpose adhesive cleaner to ensure the surface is free of contaminants that may affect adhesion.



5. Install six layers of \*3-M® Scotchguard™ Paint Protection Film, Door Edge Guard # 84901, on the tab as shown. Trim the edges of the protection film to match the contour of the molding tab. This will shim the tip of the molding away from the paint.
6. Reinstall the window reveal molding.

6.1. **Extended Cab:** Reinstall the window reveal molding as follows:



**6.1.1.** Insert two fiber trim sticks as shown, behind the edge of the window weatherstrip run channel, to provide a gap between the run channel and the paint to aid in installation of the reveal molding.

**6.1.2.** Carefully insert the rear lower corner of the molding down between the glass and outer sheet metal.

**6.1.3.** Holding the front and upper rear corners, align the molding and carefully begin to install the molding beginning at forward edge.

**6.1.4.** Carefully work the molding into position from front toward rear.

**6.1.5.** Carefully position the upper tab of the molding behind the run channel and begin to insert the alignment tab into the slot in outer sheet metal.

**6.2. Short Wheel Base Utility:** Reinstall the window reveal molding as follows:



**6.2.1.** Insert two fiber trim sticks as shown, behind the edge of the window weatherstrip run channel, to provide a gap between the run channel and the paint to aid in installation of the reveal molding.

**6.2.2.** Carefully insert the rear lower corner of the molding down between glass and outer sheet metal.

**6.2.3.** Holding the front and upper rear corners, align the molding and carefully begin to install the molding beginning at rearward edge.

**6.2.4.** Carefully work the molding into position from rear to front.

**6.2.5.** Carefully position the upper tab of the molding behind the run channel and begin to insert the alignment tabs into the slots in outer sheet metal.

7. Remove the trim sticks.
8. Carefully work the run channel into position upward in the rear corner.
9. Run the window up and down two times to fully seat the run channel.

\* We believe this source and their products to be reliable. There may be additional manufacturers of such products/materials. General Motors does not endorse, indicate any preference for, or assume any responsibility for the products or material from this firm or for any such items that may be available from other sources.

## Parts Information

\*\*This product is currently available from [www.3M.com/automotive](http://www.3M.com/automotive).

Part Number	Description	Quantity
84901**	*3-M® Scotchguard™ Paint Protection Film, Door Edge Guard	As Required

## Warranty Information

For vehicles repaired under warranty, use:

Labor Operation	Description	Labor Time	Material Allowance
1480068*	Remove, Update and Reinstall Rear Side Door Window Reveal Molding	0.8 hr	N/A

Add #1	Rear Side Door Outer Panel Partial Refinish Color/Clear Coat	2.4 hrs	GN
Add #2	With Tint Coat/Tri-Coat Paint	0.3 hr	GB

\*This is a unique labor operation for bulletin use only. It will not be published in the Labor Time Guide.

GM bulletins are intended for use by professional technicians, NOT a "do-it-yourselfer". They are written to inform these technicians of conditions that may occur on some vehicles, or to provide information that could assist in the proper service of a vehicle. Properly trained technicians have the equipment, tools, safety instructions, and know-how to do a job properly and safely. If a condition is described, DO NOT assume that the bulletin applies to your vehicle, or that your vehicle will have that condition. See your GM dealer for information on whether your vehicle may benefit from the information.



WE SUPPORT VOLUNTARY TECHNICIAN CERTIFICATION