

Windshield Dam Is Loose/Visible

Service Category Vehicle Exterior

Section Window/Glass

Market USA

Toyota Supports
 ASE Certification 

Applicability

YEAR(S)	MODEL(S)	ADDITIONAL INFORMATION
2010 – 2013	Tacoma	WMI(s): 5TF

Introduction

Some 2010 – 2013 model year Tacoma vehicles may exhibit a condition where a deformed windshield dam or the weatherstrip may be loose between the interior A-pillar garnish and windshield glass. Normally, the windshield dam is not visible and is only necessary for production. Over time, the dam adhesive may lose adhesion and deform. There is no functional concern with the windshield sealing and there is no need to replace or reseal the windshield if there are no complaints of water/air leaks. Please follow the process below to remove the exposed portion of the windshield dam.

Warranty Information

OP CODE	DESCRIPTION	TIME	OFF	T1	T2
BD1300	Trim and Relocate Windshield Dam	0.4	90998-91004	62	14

APPLICABLE WARRANTY

- This repair is covered under the Toyota Basic Warranty. This warranty is in effect for 36 months or 36,000 miles, whichever occurs first, from the vehicle's in-service date.
- Warranty application is limited to occurrence of the specified condition described in this bulletin.

Windshield Dam Is Loose/Visible

Production Change Information

This bulletin applies to vehicles produced **BEFORE** the Production Change Effective VINs shown below.

MODEL	ENGINE	DRIVETRAIN	BODY STYLE	PRODUCTION CHANGE EFFECTIVE VIN
Tacoma	1GR-FE	2WD	X-Runner	5TFTU4CN#DX001539
			Extra Cab	5TFTU4GN#DX031194
		PreRunner	Double Cab	5TFJU4GN#DX031191
			Double Cab, Long Bed	5TFKU4HN#DX003110
			4WD	Extra Cab
		4WD	Double Cab	5TFLU4EN#DX052621
	Double Cab, Long Bed		5TFMU4FN#DX011071	
	2WD		Regular Cab	5TFNX4CN#DX019017
		Double Cab	5TFJX4CN#DX023999	
			Extra Cab	5TFTX4CN#DX023855
	2TR-FE	PreRunner	Extra Cab	5TFTX4GN#DX015882
			Double Cab	5TFJX4GN#DX015883
		4WD	Regular Cab	5TFPX4EN#DX014045
			Extra Cab	5TFUX4EN#DX017203

Repair Procedure

1. Confirm that the windshield dam is loose.

NOTE
The condition may present itself on either interior lower corner of the windshield.

Figure 1.



Windshield Dam Is Loose/Visible

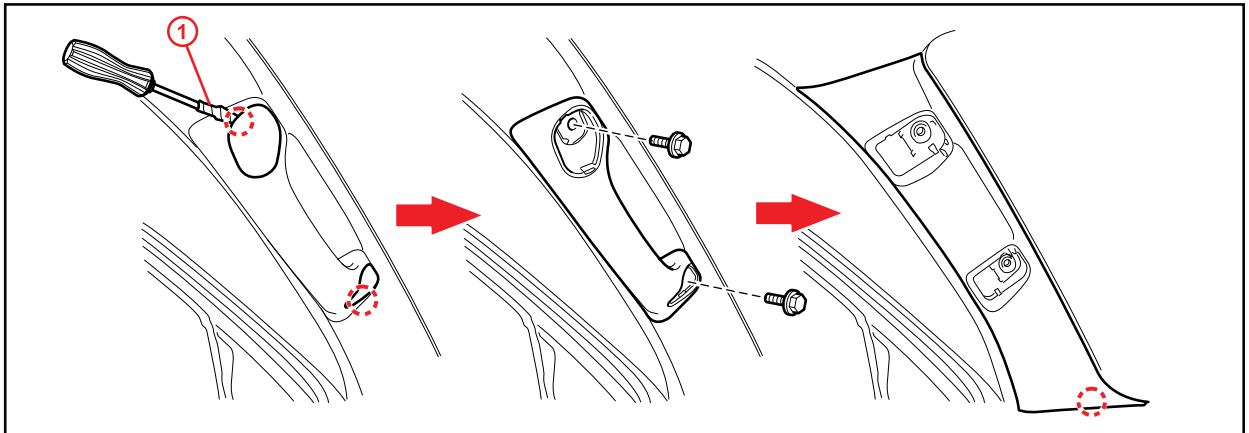
Repair Procedure (Continued)

2. Remove the front pillar garnish.
 - A. Using a screwdriver, detach the 2 claws and remove the 2 assist grip plugs.

HINT
Tape the screwdriver tip before use.

- B. Remove the 2 bolts and assist grip.
 - C. Detach the claw and remove the front pillar garnish.

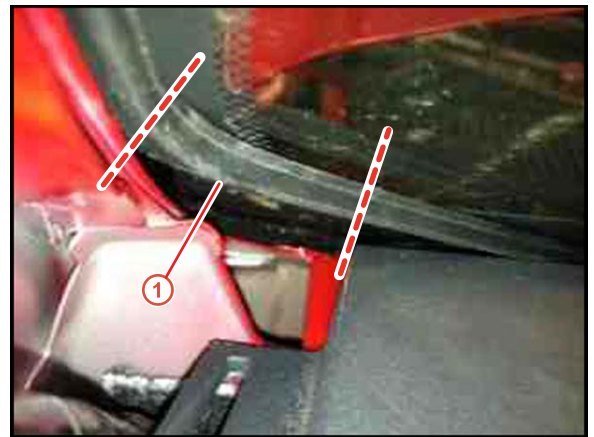
Figure 2.



1	Protective Tape
----------	------------------------

3. Using scissors or a utility knife, cut the windshield dam along the dashed lines shown. Once cut, discard the center section that was removed and tuck the loose ends back into their corresponding locations.

Figure 3.



1	Discard
----------	----------------

Windshield Dam Is Loose/Visible

Repair Procedure (Continued)

4. Reassemble vehicle in reverse order.
5. Verify that the windshield dam is no longer visible from inside the cabin or from the outside looking in.