


Rubbing Noise from Steering Shaft/Column Area

Service Category Steering

Section Steering Gear/Linkage

Market USA

Lexus Supports
ASE Certification 

Applicability

YEAR(S)	MODEL(S)	ADDITIONAL INFORMATION
2011 – 2013	LS460	Drive Type(s): 4WD VDS(s): CL1EF, CL5EF, DL1EF, DL5EF, GL1EF, GL5EF

Introduction

Some 2011 – 2013 model year LS 460 AWD vehicles may exhibit a rubbing noise when turning the steering wheel left or right. A new intermediate shaft (extension) has been developed to address this condition. Use the following repair procedure to remove and replace the Steering Intermediate Shaft No. 2 and Steering Intermediate Shaft (extension).

Production Change Information

This bulletin applies to vehicles produced **BEFORE** the Production Change Effective VIN shown below.

MODEL	PLANT	DRIVETRAIN	PRODUCTION CHANGE EFFECTIVE VIN
LS 460	Tahara	AWD	JTHGL5EF#D5050542

Warranty Information

OP CODE	DESCRIPTION	TIME	OFP	T1	T2
ST1305	R & R Steering Intermediate Shaft No. 2 and Steering Intermediate Shaft (Extension)	1.5	45297-50030	91	99

APPLICABLE WARRANTY

- This repair is covered under the Lexus Basic Warranty. This warranty is in effect for 48 months or 50,000 miles, whichever occurs first, from the vehicle's in-service date.
- Warranty application is limited to occurrence of the specified condition described in this bulletin.

Rubbing Noise from Steering Shaft/Column Area

Parts Information

PART NUMBER		PART NAME	QTY
PREVIOUS	NEW		
45260-50100	45260-50101	Steering Intermediate Shaft No. 2	1
45297-50030	45297-50040	Steering Intermediate Shaft (Extension)	1

Repair Procedure

Removal

HINT

For additional details on the following Removal steps, please refer to the appropriate Repair Manual section(s).

Refer to the Technical Information System (TIS), applicable model and model year Repair Manual:

- [2011](#) / [2012](#) / [2013](#) LS 460:
Steering – Steering Column – “Steering Column: Steering Column Assembly (w/o VGRS): Components”
- [2011](#) / [2012](#) / [2013](#) LS 460:
Steering – Steering Column – “Steering Column: Steering Column Assembly (w/o VGRS): Removal”

1. Ensure the wheels are straight and the steering wheel is centered before removing the steering intermediate shaft by installing a steering wheel holder. Once the intermediate shaft is removed, do NOT allow the steering wheel to spin freely.
2. Disconnect the cable from the negative (–) battery terminal.

CAUTION

Wait at LEAST 90 seconds after disconnecting the cable from the negative (–) battery terminal to prevent airbag and seat belt pretensioner activation.

3. Remove the instrument cluster finish panel sub-assembly.
4. Remove the instrument side panel LH.
5. Remove the No. 1 instrument cluster moulding.
6. Remove the instrument panel finish panel end LH.
7. Remove the driver side knee airbag assembly.

Rubbing Noise from Steering Shaft/Column Area

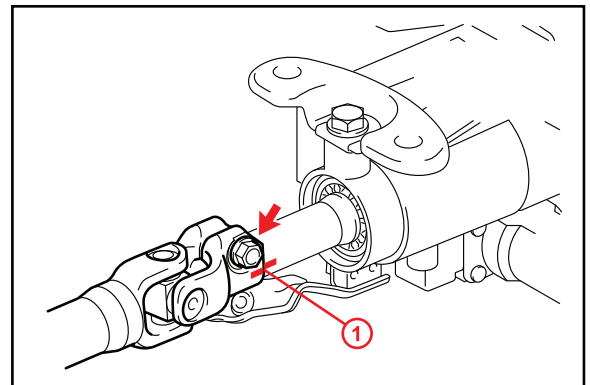
Repair Procedure

Removal (Continued)

8. Remove the No. 1 instrument panel under cover sub-assembly.
9. Remove the No. 1 instrument panel safety pad sub-assembly.
10. Remove the No. 1 air duct sub-assembly.
11. Remove the Steering Intermediate Shaft No. 2 Assembly.

A. Put matchmarks on the Steering Intermediate Shaft No. 2 and steering column.

Figure 1.

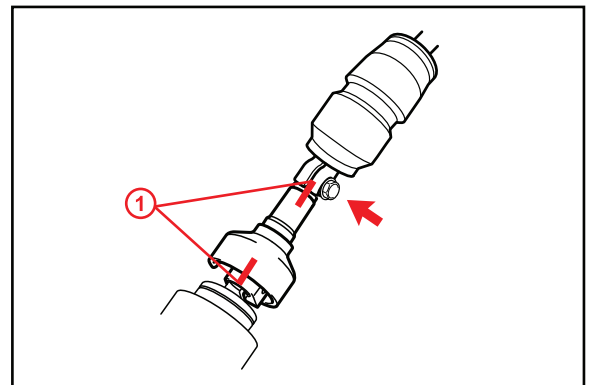


1 Matchmarks

B. Remove the bolt.

C. Put matchmarks on the Steering Intermediate Shaft No. 2 and steering link.

Figure 2.



1 Matchmarks

D. Remove the bolt.

E. Remove the clamp and the Steering Intermediate Shaft No. 2.

Rubbing Noise from Steering Shaft/Column Area

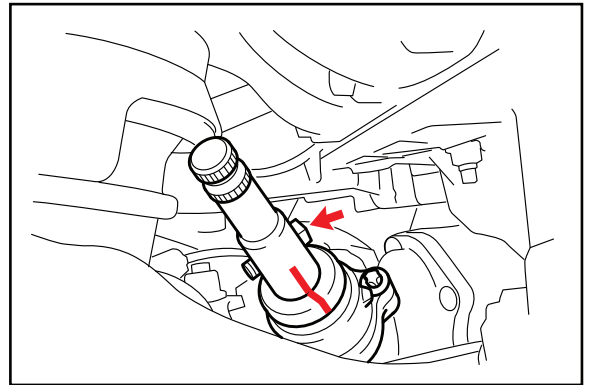
Repair Procedure

Removal (Continued)

12. Remove the Steering Intermediate Shaft (extension).

A. Put matchmarks on the Steering Intermediate Shaft (extension) and power steering link.

Figure 3.



B. Remove the bolt and Steering Intermediate Shaft (extension).

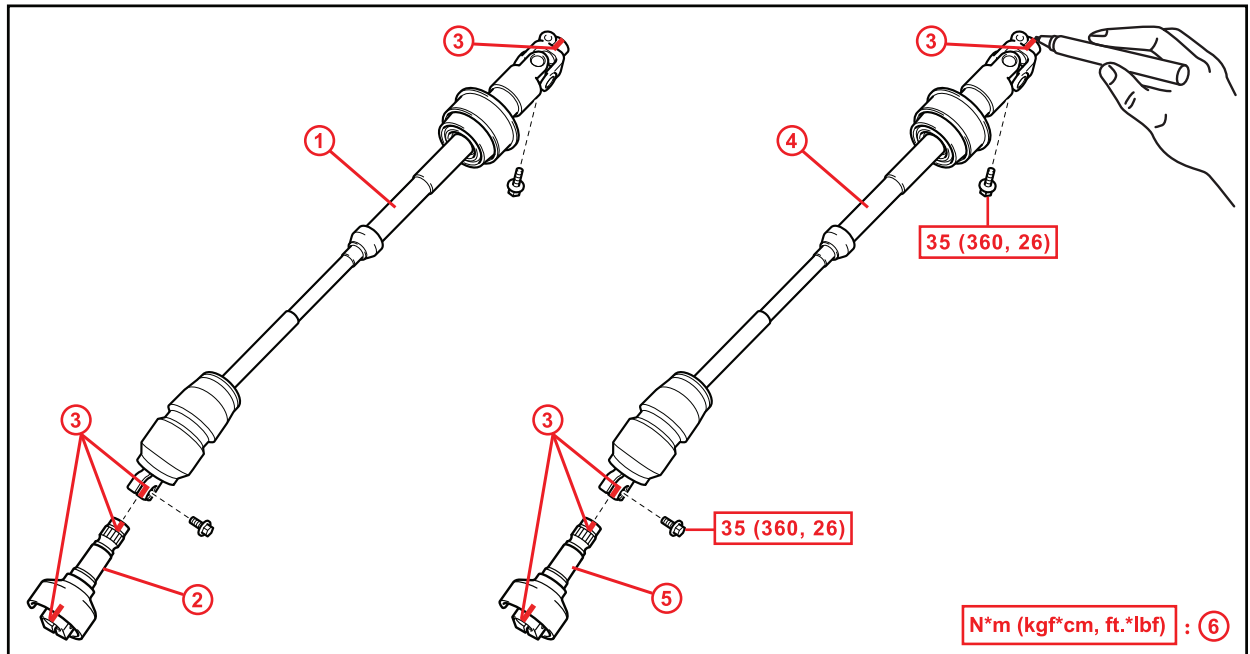
Rubbing Noise from Steering Shaft/Column Area

Repair Procedure

Removal (Continued)

13. Place the corresponding matchmarks on the NEW Steering Intermediate Shaft No. 2 and Steering Intermediate Shaft (extension). (Refer to Figure 4.)
 - A. Place the NEW Steering Intermediate Shaft No. 2 next to the original Steering Intermediate Shaft No. 2 (removed in the previous step).
 - B. Transfer those matchmarks to the same locations on the NEW Steering Intermediate Shaft No. 2.
 - C. Complete the same procedure on the Steering Intermediate Shaft (extension).

Figure 4.



1	Original Steering Intermediate Shaft No. 2
2	Original Steering Intermediate Shaft (Extension)
3	Matchmarks

4	New Steering Intermediate Shaft No. 2
5	New Steering Intermediate Shaft (Extension)
6	Specified Torque

Rubbing Noise from Steering Shaft/Column Area

Repair Procedure (Continued)

Installation

HINT

For additional details on the following Installation steps, please refer to the appropriate Repair Manual section(s).

Refer to TIS, applicable model and model year Repair Manual:

- [2011](#) / [2012](#) / [2013](#) LS 460:
Steering – Steering Column – “Steering Column: Steering Column Assembly (w/o VGRS): Installation”

1. Install the Steering Intermediate Shaft No. 2 Assembly.
 - A. Install the clamp to the steering column hole cover sub-assembly.
 - B. Align the matchmarks on the Steering Intermediate Shaft No. 2 Assembly and steering column.
 - C. Install the bolt.
Torque: 35 N*m (360 kgf*cm, 26 ft*lbf)
 - D. Align the matchmarks on the Steering Intermediate Shaft No. 2 Assembly and steering link.
2. Install the Steering Intermediate Shaft (extension).
 - A. Align the matchmarks on the Steering Intermediate Shaft (extension) and power steering link.
 - B. Install the bolt.
Torque: 35 N*m (360 kgf*cm, 26 ft*lbf)
3. Install the No. 1 instrument panel safety pad sub-assembly.
4. Install the driver side knee airbag assembly.
Torque: 10 N*m (102 kgf*cm, 7 ft*lbf)
5. Install the No. 1 instrument panel under cover sub-assembly.
6. Install the No. 1 instrument cluster moulding.
7. Install the instrument side panel LH.
8. Install the instrument panel finish panel end LH.
9. Install the instrument cluster finish panel sub-assembly.
10. Remove the steering wheel holder from the vehicle (if used).
11. Reconnect the cable to the negative (–) battery terminal.
12. Road test the vehicle to verify the repair and confirm that the steering wheel is centered.