

# Front Passenger Interior Door Assist Grip Cover Loose

Service Category Vehicle Interior

Section Interior Panels/Trim

Market USA

Lexus Supports  
ASE Certification 

## Applicability

YEAR(S)	MODEL(S)	ADDITIONAL INFORMATION
2011 – 2013	CT200H	

### REVISION NOTICE

July 31, 2013 Rev1:

- Applicability has been updated to include 2012 – 2013 model year CT 200h vehicles.
- The Introduction, Warranty Information, Parts Information, and Repair Procedure sections have been updated.

Any previous printed versions of this bulletin should be discarded.

## Introduction

Some 2011 – 2013 model year CT 200h vehicles may exhibit a condition where the front passenger interior door assist grip cover (door pull) becomes loose from the door panel. A newly designed front passenger interior door assist grip cover, 2 retaining clips, and repair procedure have been developed to address this condition. Please follow the procedure in this bulletin to install the updated door assist grip cover.

## Production Change Information

This bulletin applies to vehicles produced **BEFORE** the Production Change Effective VIN shown below.

MODEL	PRODUCTION CHANGE EFFECTIVE VIN
CT 200h	JTHKD5BH#D2147732

## Front Passenger Interior Door Assist Grip Cover Loose

### Warranty Information

OP CODE	DESCRIPTION	TIME	OFF	T1	T2
BD1117	Replace Door Assist Grip Cover	0.3	74645-76010-C1	62	14

#### APPLICABLE WARRANTY

- This repair is covered under the Lexus Comprehensive Warranty. This warranty is in effect for 48 months or 50,000 miles, whichever occurs first, from the vehicle's in-service date.
- Warranty application is limited to occurrence of the specified condition described in this bulletin.

### Parts Information

PART NUMBER		PART NAME	QTY
PREVIOUS	NEW		
74645-76010-C1	74645-76020-C0	Cover, Door Assist Grip, RH – Black	1
67771-76010			2

### Required Tools & Equipment

SPECIAL SERVICE TOOLS (SST)	PART NUMBER	QTY
Plastic Pry Tool Set*	00002-06020-02	1

\* Essential SST.

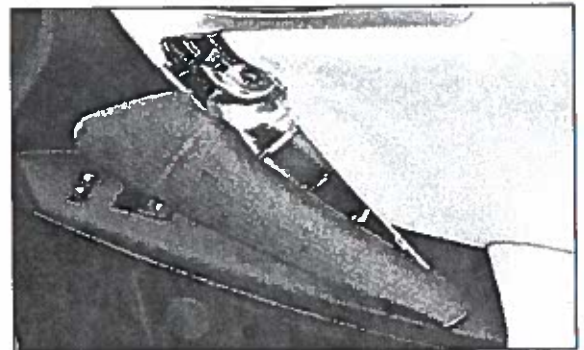
#### NOTE

Additional SSTs may be ordered by calling 1-800-933-8335.

### Repair Procedure

1. Confirm that the door assist grip cover is loose.
  - A. If the door assist grip cover is loose, proceed to step 2 for door assist cover replacement.
  - B. If the door assist grip cover is not loose, this bulletin does not apply.

Figure 1.



## Front Passenger Interior Door Assist Grip Cover Loose

---

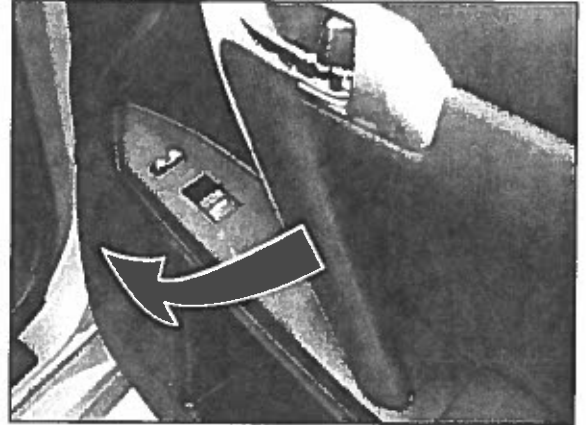
### Repair Procedure (Continued)

2. Remove the passenger assist grip cover.

Refer to the Technical Information System (TIS), applicable model and model year Repair Manual:

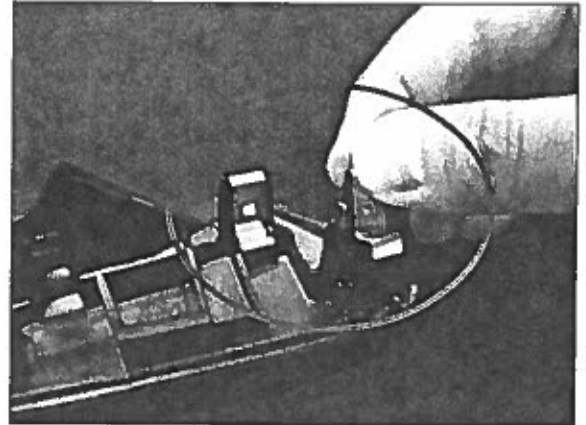
- 2011 / 2012 / 2013 CT 200h:  
*Vehicle Exterior – Door/Hatch – “Door/Hatch:  
Front Door: Disassembly”*

Figure 2.



3. On the new part, install the 2 retainers on the plastic holders as shown.

Figure 3.



## Front Passenger Interior Door Assist Grip Cover Loose

---

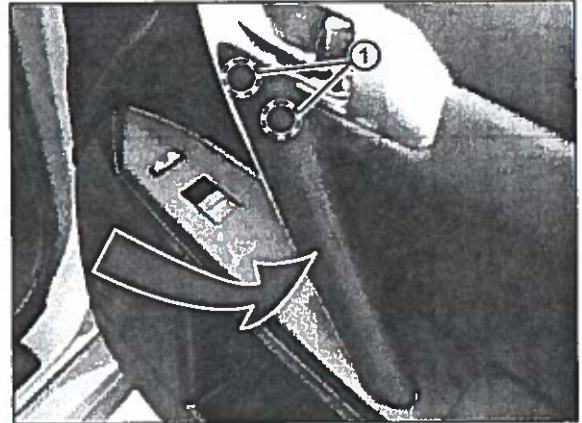
### Repair Procedure (Continued)

4. Install the assist grip cover.

Refer to TIS, applicable model and model year  
Repair Manual:

- 2011 / 2012 / 2013 CT 200h:  
*Vehicle Exterior – Door/Hatch – “Door/Hatch:  
Front Door: Reassembly”*

Figure 4.



1	Click Sound
---	-------------

5. Confirm the click sound from the two clips when the assist grip cover is installed in the door trim panel.