

Subject <b>Window and Windshield Product Report Tips</b>		Market <b>USA</b>
Service Category <b>Vehicle Exterior</b>	Section <b>Window/Glass</b>	
Applicability <b>Multiple Models</b>		

**APPLICABLE VEHICLES**

2010-2012	HS250H	2013-2014	ES300H
2010-2014	IS250C	2009-2014	ES350
2009-2010	SC430	2009-2014	LS600H
2012	LFA	2009-2014	LS460
2009	GX470	2010-2014	GX460
2010-2014	RX450H	2009-2014	IS250
2011-2014	CT200H	2009-2011, 2013-2014	GS350
2009-2014	IS350	2009-2014	RX350
2010-2014	IS350C	2009-2011	GS460
2009-2014	IS F	2009-2011, 2013-2014	GS450H
2009-2011, 2013-2014	LX570		

**CONDITION**

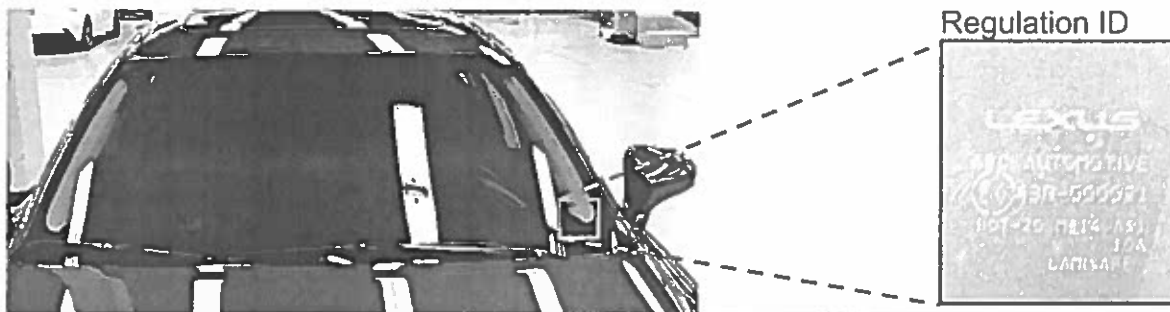
Tips for writing a DPR (Dealer Product Report) on manufacturing issues for windows and windshields.

**RECOMMENDATIONS**

If you encounter a vehicle that exhibits a manufacturing issue and you're planning to submit a DPR on the issue; please include a photo that outlines the concern area with white paint marker and a photo of the Regulation ID which is located in the lower corner of the glass.

**NOTE:** Do NOT write reports on stone chips or other outside influences that cause glass damage

Before taking a picture of the Regulation ID, place a blank sheet of paper behind the Regulation ID (sheet of paper must create a contrast with the text of the Regulation ID).



**LINK REFERENCES**

<b>Subject</b> <b>Window and Windshield Product Report Tips</b>	<b>Market</b> USA
<b>Applicability</b> Multiple Models	

This Tech Tip does not contain any link references