

HDD Navigation Program Setup

Service
Category Audio/Visual/Telematics

Section Navigation/Multi Info Display

Market USA

Lexus Supports
ASE Certification 

Applicability

YEAR(S)	MODEL(S)	ADDITIONAL INFORMATION
2011 – 2012	CT200H	
2010 – 2012	ES350, HS250H, IS F, IS250, IS250C, IS350, IS350C, RX350, RX450H	
2010 – 2011	GS350, GS450H, GS460	
2010 – 2013	GX460	
2012	LFA	
2007 – 2012	LS460	
2008 – 2012	LS600H, LX570	
2010	SC430	

REVISION NOTICE

April 9, 2013 Rev1:

- 2013 model year CT 200h has been removed from this bulletin.
- Required Tools & Equipment and Application Installation sections have been updated.

Any previous printed versions of this bulletin should be discarded.

HDD Navigation Program Setup

SUPERSESSON NOTICE

The information contained in this bulletin supersedes Service Bulletin No. L-SB-0180-09.

- Applicability has been updated to include 2013 model year Lexus vehicles.
- Location of HDD Navigation information has changed on TIS, which is reflected in this bulletin.

Service Bulletin No. L-SB-0180-09 is Obsolete and any printed versions should be discarded. Be sure to review the entire content of this service bulletin before proceeding.

Introduction

Lexus models equipped with Hard Disk Drive (HDD) Navigation may have their map data, Compact Disc Database (CDDDB), and navigation head unit software updated using the Navigation Update Tool and the HDD Navigation Programs Installer.

The Navigation Programs Installer is a PC application available on the Technical Information System (TIS) and must be installed on Techstream or an equivalent PC. The Navigation Update Tool is an essential service tool and the device must be properly configured before initial use.

Follow the procedures in this bulletin to locate and install the HDD Navigation Programs Installer and properly configure the Navigation Update Tool. The HDD Navigation Programs Installer is a mandatory application that will be used to update the vehicle's map data, as well as the CDDDB data.

This bulletin will outline two processes that must be completed to prepare the Navigation Update Tool for initial use:

- Download and install the Navigation Programs Installer onto a PC.
- Perform initial setup of the Navigation Update Tool.

NOTE

- In order to perform the download and setup procedure, the PC being used **MUST** be put in **ADMINISTRATOR MODE**. Software will **NOT** complete setup if this is not met.
- Before performing this procedure, disconnect all other USB peripheral and external storage devices (i.e., USB thumb drives, hard drives, cameras, mice, etc.).
- For additional details, refer to the "Navigation Update Tool Operating Manual" on TIS, *Diagnostics – Tools & Equipment – Navigation Update Tool – Reference Documents*.

Warranty Information

OP CODE	DESCRIPTION	TIME	OFF	T1	T2
N/A	Not Applicable to Warranty	-	-	-	-

HDD Navigation Program Setup

Required Tools & Equipment

REQUIRED EQUIPMENT	QTY
PC with Windows® XP Operating System	1

<p>NOTE</p> <ul style="list-style-type: none"> • Only PCs with Windows® XP operating system can be used for this process. The Navigation Programs Installer does NOT support Windows® Vista or Windows® 7 operating systems. • Techstream 1.0 utilizes Windows® XP operating system.

SPECIAL SERVICE TOOLS (SST)	PART NUMBER	QTY
Navigation Update Tool Kit*	<u>95079-00003-KIT</u>	1
GR8 Battery Diagnostic Station*	<u>00002-MCGR8</u>	1

* Essential SST.

REQUIRED EQUIPMENT	PART NUMBER	QTY
Generation 5 HDD Disc	00241-G5V12-SSTDK	1
Generation 6 HDD Disc	00241-G6V12-SSTDK	1

<p>NOTE</p> <p>For additional Map Discs, order from the Materials Distribution Center (MDC) through <i>Dealer Daily – Dealer Support Materials Orders</i>.</p>

Application Installation

The Navigation Programs Installer should be installed on one or more of the dealership's Techstream units, or any equivalent service department PC.

Minimum PC requirements for the application to operate properly include:

- Windows® XP (does NOT support Windows® Vista or Windows® 7 operating systems)
- Internet Explorer Version 6 SP2
- 512 MB RAM
- 1.0 GHz processor
- 20 GB free hard drive space
- 2 free USB ports

HDD Navigation Program Setup

Application Installation (Continued)

Download and Install Navigation Programs Installer

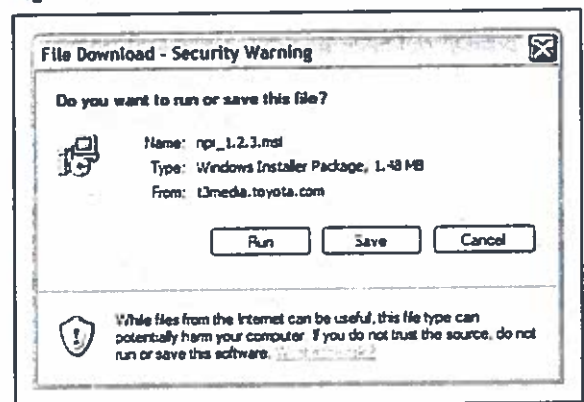
1. Turn on Techstream.
2. Log into TIS (<http://tis.toyota.com>).
3. Download the Navigation Programs Installer from TIS.
 - A. Click on the *TIS* tab.
 - B. Click on the *Diagnostics* tab.
 - C. Click on the *Tools & Equipment* tab.
 - D. Click on the *Navigation Update Tool* tab under *Tools*.
 - E. Click on *Navigation Programs Installer* under *Available Software Updates*.

NOTE

If the TIS division preference is NOT set to *Lexus* (under the *My Account* area), the *Navigation Update Tool* tab will NOT display. HDD Navigation information is a Lexus ONLY TIS option at this time.

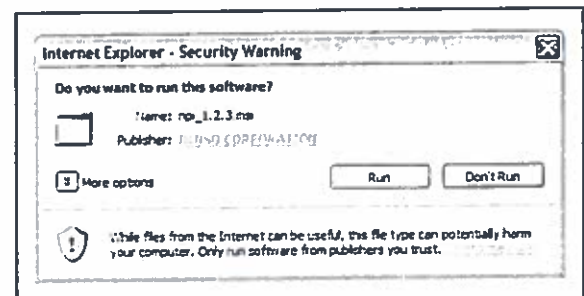
4. Click *Run* from the *File Download - Security Warning* screen to begin download.

Figure 1.



5. Click *Run* to install program onto PC.

Figure 2.



HDD Navigation Program Setup

Application Installation (Continued)

6. Click *Next*.

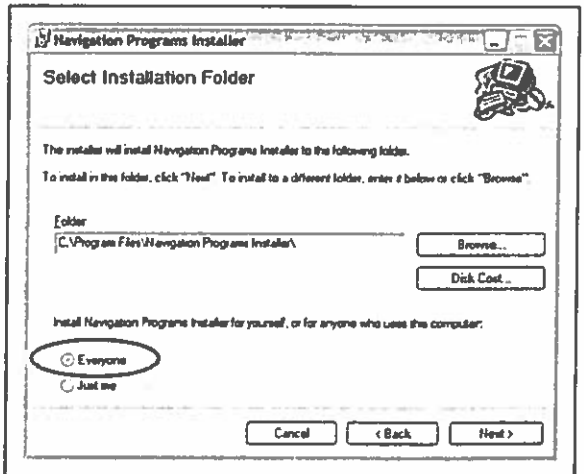
Figure 3.



7. Ensure the *Everyone* radio button is selected and click *Next*.

Figure 4.

NOTE
If *Everyone* is NOT selected, future installation errors could occur.

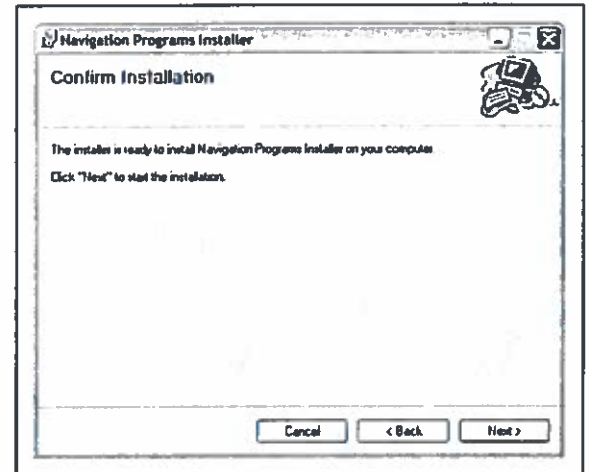


HDD Navigation Program Setup

Application Installation (Continued)

8. Click *Next*.

Figure 5.



9. Click *Close*.

Figure 6.



HDD Navigation Program Setup

Tool Setup

Perform Initial Setup for Navigation Update Tool

WARNING

Do **NOT** perform setup if you have key files loaded onto the Navigation Update Tool with an older version; otherwise, the key files could be erased and key files **CANNOT** be recovered. Call the Denso Nav Help Desk at 1-888-285-4236 for assistance.

NOTE

- In order to perform the following procedure, the PC being used **MUST** be put in **ADMINISTRATOR MODE**. Software will **NOT** complete setup if this is not met.
- Before performing this procedure, disconnect all other USB peripheral and external storage devices (i.e., USB thumb drives, hard drives, cameras, mice, etc.).

Setup **ONLY** needs to be completed once for each Navigation Update Tool.

1. Open the *Navigation Programs Installer* by clicking the icon on the desktop.

Figure 7.

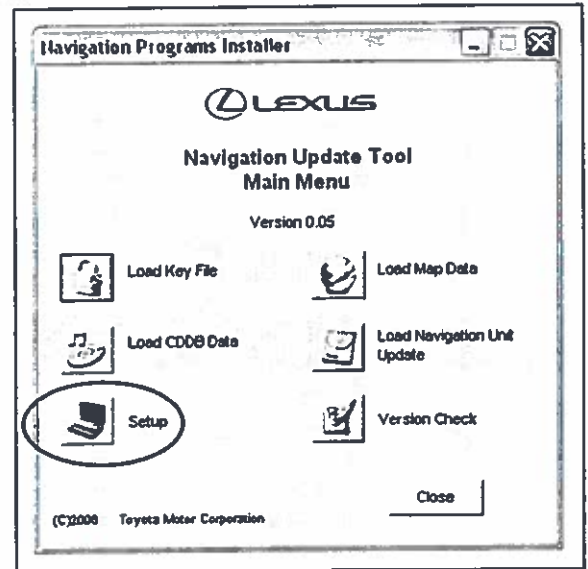


HDD Navigation Program Setup

Tool Setup (Continued)

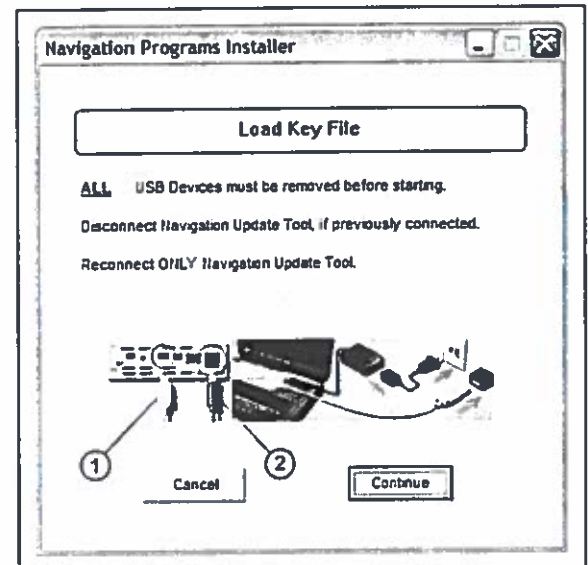
2. Click *Setup* in the *Navigation Update Tool Main Menu*.

Figure 8.



3. Connect the Navigation Update Tool and press *Continue*.
 - A. Make sure the USB cable is secured in both the PC and the Navigation Update Tool USB ports.
 - B. Connect A/C power supply.
 - C. Turn power ON and press *Continue*.

Figure 9.



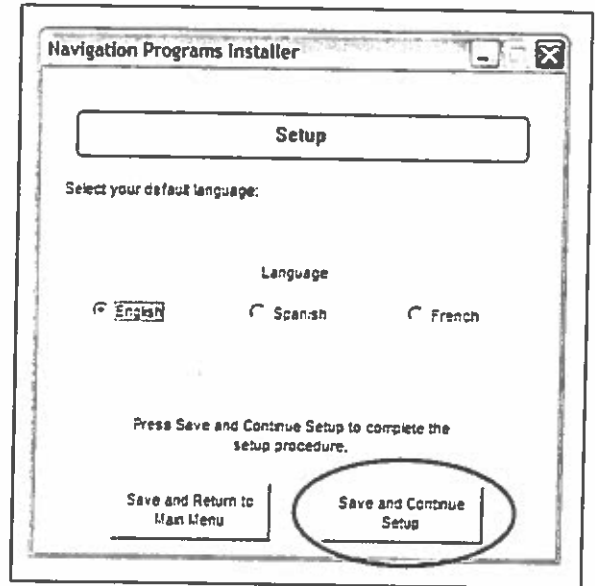
1	To PC
2	To A/C Power

HDD Navigation Program Setup

Tool Setup (Continued)

4. Click the desired default language radio button and click *Save and Continue Setup*.

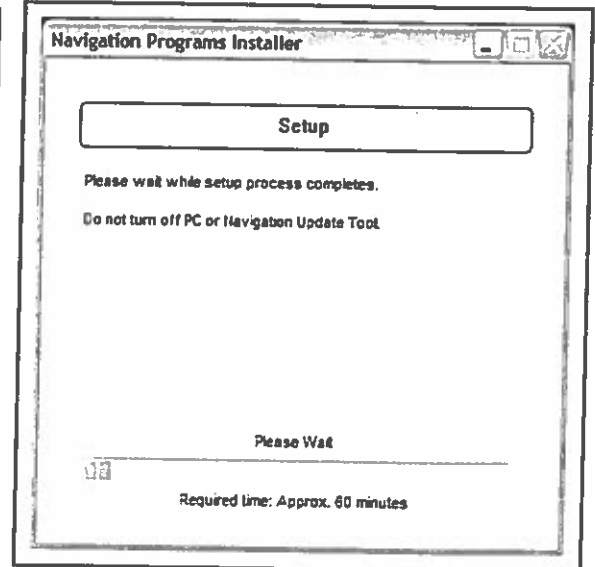
Figure 10.



5. Allow Setup to complete (it requires about 1 hour).

NOTE
Do NOT turn the PC or Navigation Update Tool OFF during Setup.

Figure 11.



HDD Navigation Program Setup

Tool Setup (Continued)

6. Confirm that the *Setup* screen appears with *"Setup has finished successfully."*

If an error screen appears, please consult the *"Navigation Update Tool Operating Manual"* on TIS, *Diagnostics – Tools & Equipment – Navigation Update Tool – Reference Documents*.

Figure 12.

