

Trailer Brake Controller - Braking Feel

Service Category Brake

Section Brake Control/Dynamic Control System

Market USA

Toyota Supports
 ASE Certification 

Applicability

YEAR(S)	MODEL(S)	ADDITIONAL INFORMATION
2016 - 2017	Tundra	VDS(s): AW5F1, AY5F1, BW5F1, BY5F1, CW5F1, CY5F1, DW5F1, DY5F1, EW5F1, EY5F1, FW5F1, FY5F1, GW5F1, GY5F1, HW5F1, HY5F1, NW5F1, NY5F1, PW5F1, PY5F1, RW5F1, RY5F1, SW5F1, SY5F1, TW5F1, TY5F1, UW5F1, UY5F1

Introduction

Some 2016 – 2017 model year Tundra vehicle customers have expressed dissatisfaction with the braking feel of the integrated trailer brake controller. Revised software for the Trailer Brake Control ECU has been developed to provide an alternative trailer braking feel for these customers. Follow the Repair Procedure in this bulletin to address this condition.

Warranty Information

OP CODE	DESCRIPTION	TIME	OFF	T1	T2
BR1612	Reprogram ECU (Trailer Brake Control ECU)	0.3	89547-0C010	99	99
			89547-0C011		

APPLICABLE WARRANTY

- This repair is covered under the Toyota Basic Warranty. This warranty is in effect for 36 months or 36,000 miles, whichever occurs first, from the vehicle's in-service date.
- Warranty application is limited to occurrence of the specified condition described in this bulletin.



Trailer Brake Controller - Braking Feel

Parts Information

PART NUMBER		PART NAME	QTY
PREVIOUS	NEW		
89547-0C010	89547-0C012	Brake Control Relay w/Bracket	-
89547-0C011			

NOTE

The Brake Control Relay with Bracket should NOT be replaced as part of the Repair Procedure.

Required Tools & Equipment

REQUIRED EQUIPMENT	SUPPLIER	PART NUMBER	QTY
Techstream 2.0*	ADE	TS2UNIT	1
Techstream Lite		TSLITEPDLR01	
Techstream Lite (Green Cable)		TSLP2DLR01	

NOTE

- Only ONE of the Techstream units listed above is required.
- Software version 12.10.018 or later is required.
- Additional Techstream units may be ordered by calling Approved Dealer Equipment (ADE) at 1-800-368-6787.

SPECIAL SERVICE TOOLS (SST)	PART NUMBER	QTY
GR8 Battery Diagnostic Station*	00002-MCGR8	1

NOTE

Additional SSTs may be ordered by calling 1-800-933-8335.

* Essential SST.



Trailer Brake Controller - Braking Feel

Calibration Information

MODEL	ENGINE	CALIBRATION ID	
		PREVIOUS	NEW
Tundra	3UR	8954F0C011 8954F0C012	8954F0C013

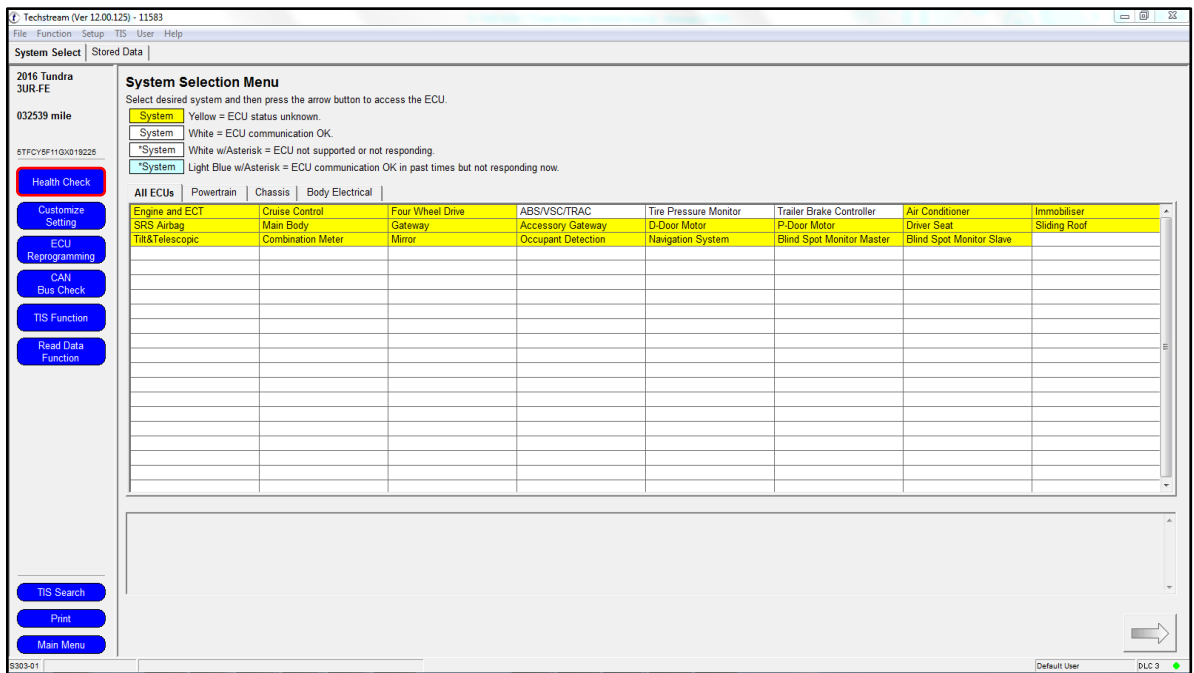
Repair Procedure

1. Confirm the condition.

Does the customer express dissatisfaction with the feeling of the trailer brake operation while using the integrated trailer brake controller on the vehicle?

 - **YES** — Continue to step 2.
 - **NO** — This bulletin does NOT apply. Continue diagnosis using the applicable Repair Manual.
2. Verify the vehicle's applicability for recalibration.
 - A. Connect Techstream and establish a vehicle connection.
 - B. Click the *Health Check* button on the *System Select* tab.

Figure 1.



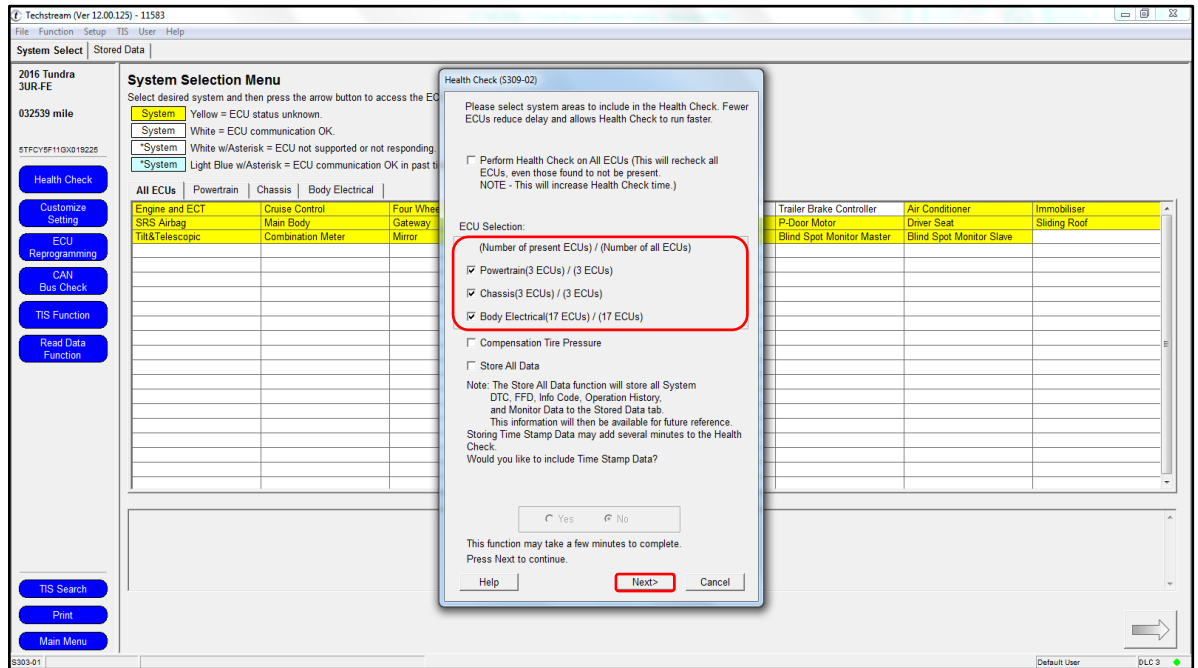


Trailer Brake Controller - Braking Feel

Repair Procedure (Continued)

- C. Choose the desired ECU group(s) in the *Health Check* dialog box.

Figure 2.



- D. Click *Next*.



Trailer Brake Controller - Braking Feel

Repair Procedure (Continued)

E. Click “Continue” to view Health Check results.

Figure 3.

System	Monitor Status	DTC	Clear Count	Pass	Fail	Test Failed	Calibration	Update
Engine and ECT	Com	P1604				X	30C1301	?
Four Wheel Drive	-	U0100				X	50C8101	?
		U0416				X	8953FC0100	?
Trailer Brake Controller	-	C1448				X	8954FC0111	?
		U0178				X		
		B15F6				X		
		U0148				X		
Navigation System	-							
Cruise Control	-							
Tire Pressure Monitor	-							
ABS/SC/TBA/C	-						F15260C892	?
Occupant Detection	-							
SRS Airbag	-							
Air Conditioner	-							
Combination Meter	-						83800CQ8008	?
Main Body	-							
Immobilizer	-							

Is the calibration ID listed the latest ECU (Trailer Brake Control ECU) calibration?

- **NO** — Continue to step 3.
- **YES** — This bulletin does NOT apply. Continue diagnosis using the applicable Repair Manual.

3. Flash reprogram the ECU (Trailer Brake Control ECU).

NOTE

- The GR8 Battery Diagnostic Station **MUST** be used in Power Supply Mode to maintain battery voltage at 13.5V while flash reprogramming the vehicle.
- For details on how to use the GR8 Battery Diagnostic Station, refer to the “[GR8 Instruction Manual](#)” located on the Technical Information System (TIS), *Diagnostics – Tools & Equipment – Battery Diagnostics*.



Trailer Brake Controller - Braking Feel

Repair Procedure (Continued)

4. Follow the procedures outlined in Service Bulletin [T-SB-0134-16](#), "Techstream ECU Flash Reprogramming Procedure," and flash the ECU (Trailer Brake Control ECU) with the NEW calibration file update.

NOTICE

In the event that the reprogramming fails, the technician **MUST** "disconnect and connect the ECU (Trailer Brake Control ECU) **BEFORE** retry" **OR** "disconnect and connect the cable from the negative (-) battery terminal" **BEFORE** selecting "Retry." Failure to follow this step in the event of a failed reprogramming process may result in permanent damage to the vehicle's ECU.

5. Perform a Health Check to verify the updated calibration ID. Start the vehicle to verify there are no warning messages on the instrument cluster and no MIL "ON" condition.