

Subject

# Window and Windshield Product Report Tips

Market

USA

Service Category

Vehicle Exterior

Section

Window/Glass

Applicability

Multiple Models

## APPLICABLE VEHICLES

2010-2012	HS250H	2013-2015	ES300H
2010-2015	IS250C	2009-2015	ES350
2009-2010	SC430	2009-2015	LS600H
2012	LFA	2009-2015	LS460
2009	GX470	2010-2015	GX460
2010-2015	RX450H	2009-2015	IS250
2009-2011, 2013-2015	GS350	2011-2015	CT200H
2009-2015	IS350	2009-2015	RX350
2010-2015	IS350C	2009-2011	GS460
2009-2014	IS F	2009-2011, 2013-2015	GS450H
2009-2011, 2013-2015	LX570		

## CONDITION

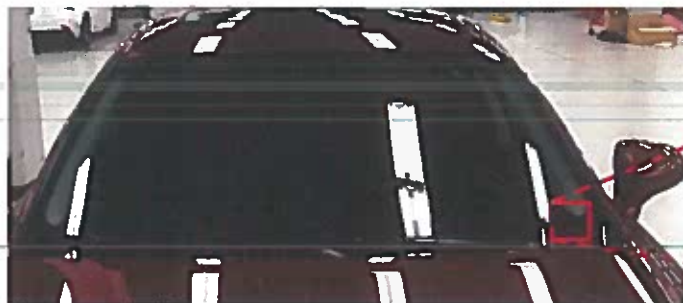
Tips for writing a DPR (Dealer Product Report) on manufacturing issues for windows and windshields.

## RECOMMENDATIONS

If you encounter a vehicle that exhibits a manufacturing issue and you're planning to submit a DPR on the issue; please include a photo that outlines the concern area with white paint marker and a photo of the Regulation ID which is located in the lower corner of the glass.

**NOTE:** Do NOT write reports on stone chips or other outside influences that cause glass damage

Before taking a picture of the Regulation ID, place a blank sheet of paper behind the Regulation ID (sheet of paper must create a contrast with the text of the Regulation ID).



Regulation ID



## LINK REFERENCES

This Tech Tip does not contain any link references